

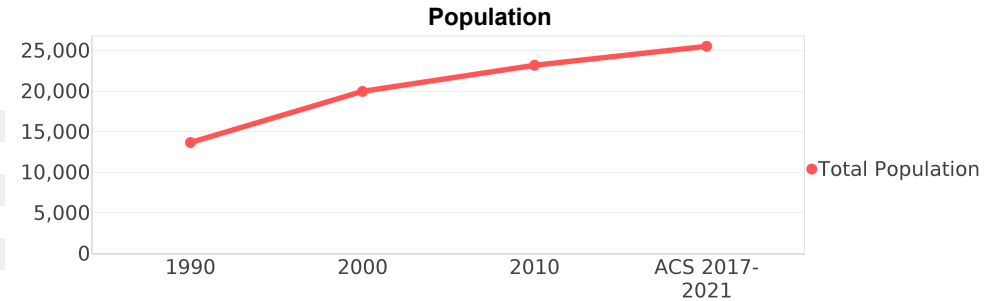
## Oak Ridge (CDP)

**Area:** [2](#) 3,731 square miles  
**Jurisdiction - Cities:** [3](#) Orlando  
**Jurisdiction - Counties:** [3](#) Orange



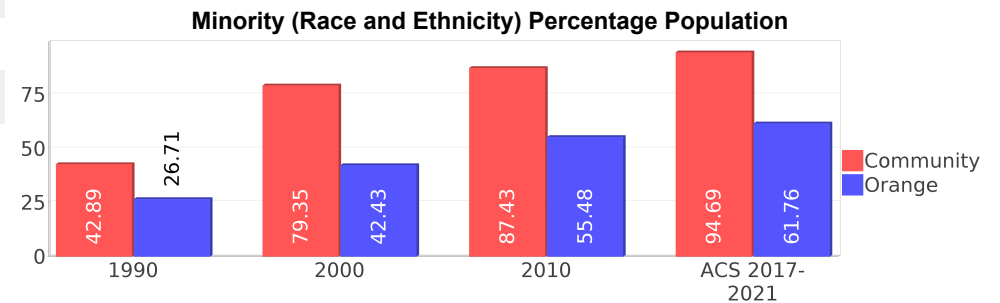
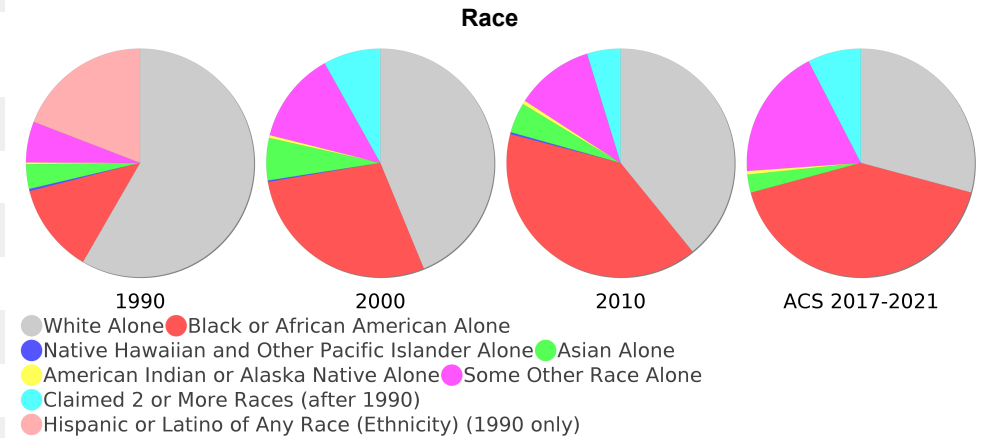
### General Population Trends

Description	1990	2000	2010 <sup>1</sup>	ACS 2017-2021
Total Population	13,678	19,981	23,215	25,544
Total Households	5,296	6,723	7,663	6,446
Average Persons per Acre	5.50	9.23	13.26	17.63
Average Persons per Household	2.97	2.76	2.79	3.43
Average Persons per Family	3.18	3.39	3.24	4.37
Males	6,970	10,115	11,770	13,681
Females	6,708	9,865	11,444	11,863



### Race and Ethnicity Trends <sup>5, 8, 9</sup>

Description	1990	2000	2010 <sup>1</sup>	ACS 2017-2021
White Alone	9,869 (72.15%)	8,747 (43.78%)	9,086 (39.14%)	7,450 (29.17%)
Black or African American Alone	2,143 (15.67%)	5,700 (28.53%)	9,263 (39.90%)	10,634 (41.63%)
Native Hawaiian and Other Pacific Islander Alone	53 (0.39%)	44 (0.22%)	66 (0.28%)	0 (0.00%)
Asian Alone	591 (4.32%)	1,194 (5.98%)	993 (4.28%)	650 (2.54%)
American Indian or Alaska Native Alone	42 (0.31%)	83 (0.42%)	129 (0.56%)	134 (0.52%)
Some Other Race Alone	978 (7.15%)	2,586 (12.94%)	2,572 (11.08%)	4,738 (18.55%)
Claimed 2 or More Races	NA (NA)	1,625 (8.13%)	1,104 (4.76%)	1,936 (7.58%)
Hispanic or Latino of Any Race (Ethnicity)	3,239 (23.68%)	8,125 (40.66%)	10,037 (43.23%)	13,145 (51.46%)
Not Hispanic or Latino (Ethnicity)	10,439 (76.32%)	11,856 (59.34%)	13,178 (56.77%)	12,399 (48.54%)
Minority (Race and Ethnicity)	5,867 (42.89%)	15,855 (79.35%)	20,298 (87.43%)	24,187 (94.69%)



## Age Trends <sup>5</sup>

Description	1990	2000	2010 <sup>1</sup>	ACS 2017-2021
Under Age 5	7.34%	8.45%	9.05%	6.17%
Ages 5-17	16.50%	20.81%	18.66%	20.50%
Ages 18-21	7.69%	7.45%	7.14%	7.51%
Ages 22-29	22.12%	14.96%	15.99%	11.64%
Ages 30-39	19.37%	18.19%	16.22%	17.80%
Ages 40-49	12.02%	13.02%	13.09%	11.89%
Ages 50-64	10.32%	12.04%	13.70%	14.84%
Age 65 and Over	4.60%	5.06%	6.13%	9.62%
-Ages 65-74	3.22%	3.25%	4.09%	6.38%
-Ages 75-84	1.10%	1.37%	1.63%	2.72%
-Age 85 and Over	0.27%	0.43%	0.41%	0.52%
Median Age	NA	30	31	33

## Income Trends <sup>12, 13, 5</sup>

Description	1990	2000	2010 <sup>1</sup>	ACS 2017-2021
Median Household Income	\$27,432	\$32,052	\$35,653	\$47,853
Median Family Income	\$30,775	\$32,209	\$35,941	\$42,063
Population below Poverty Level	9.94%	18.03%	15.08%	26.40%
Households below Poverty Level	8.57%	16.56%	14.24%	23.02%
Households with Public Assistance Income	3.85%	4.11%	2.45%	3.97%

## Disability Trends <sup>10</sup>

See the [Data Sources](#) section below for an explanation about the differences in disability data among the various years.

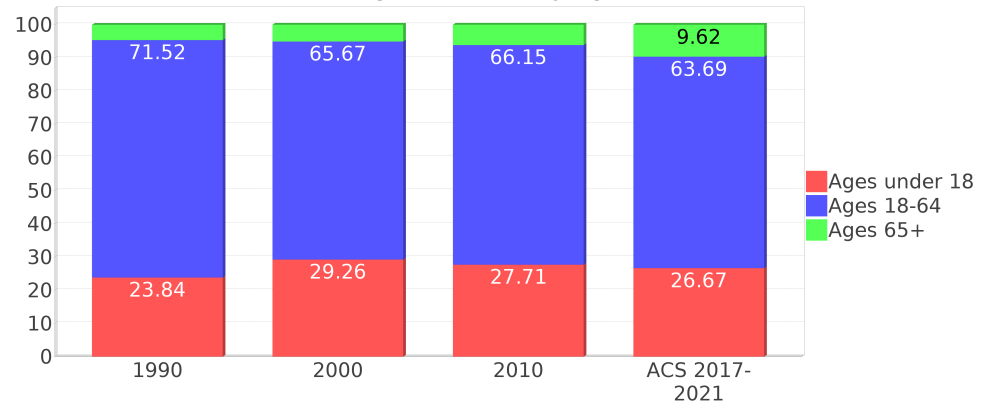
Description	1990	2000	2010 <sup>1</sup>	ACS 2017-2021
Population 16 To 64 Years with a disability	771 (7.11%)	3812 (20.86%)	(NA)	(NA)
Population 20 To 64 Years with a disability	(NA)	(NA)	(NA)	1889 (12.42%)

## Educational Attainment Trends <sup>11, 5</sup>

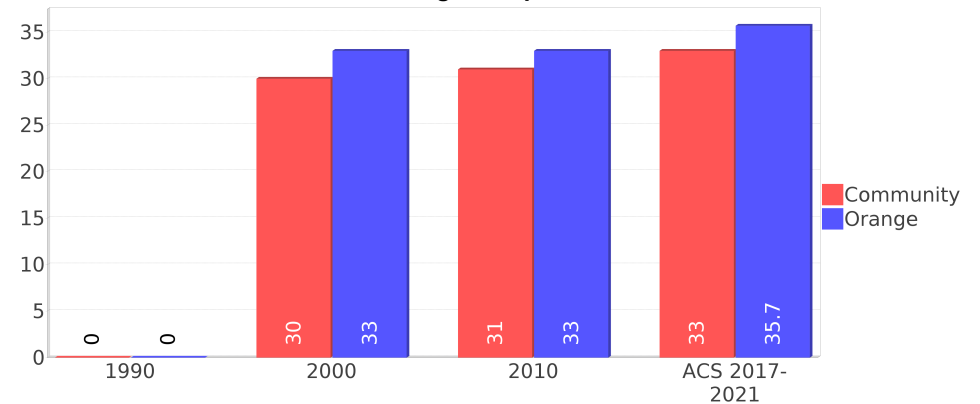
Age 25 and Over

Description	1990	2000	2010 <sup>1</sup>	ACS 2017-2021
Less than 9th Grade	571 (6.80%)	1,385 (11.89%)	1,792 (14.21%)	2,796 (17.53%)
9th to 12th Grade, No Diploma	1,642 (19.55%)	2,364 (20.29%)	1,259 (9.98%)	1,836 (11.51%)
High School Graduate or Higher	6,187 (73.65%)	7,899 (67.81%)	9,563 (75.81%)	11,319 (70.96%)
Bachelor's Degree or Higher	1,095 (13.04%)	1,328 (11.40%)	1,389 (11.01%)	1,893 (11.87%)

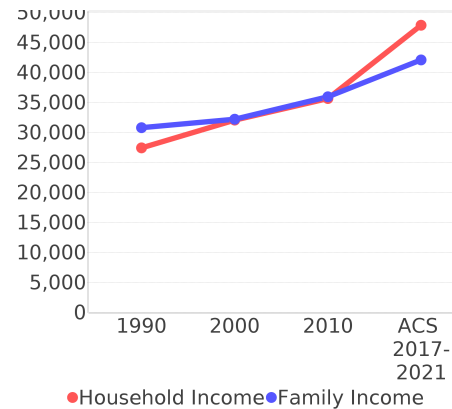
Percentage Population by Age Group



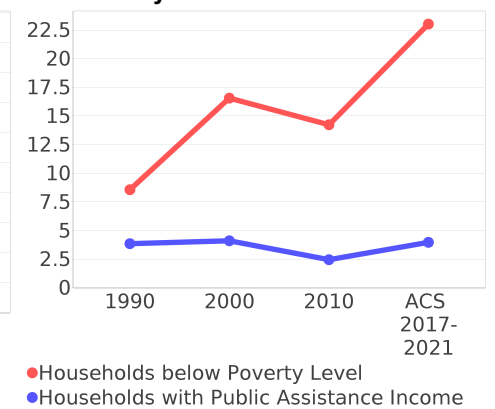
Median Age Comparison



Income Trends



Poverty and Public Assistance



## Language Trends <sup>5</sup>

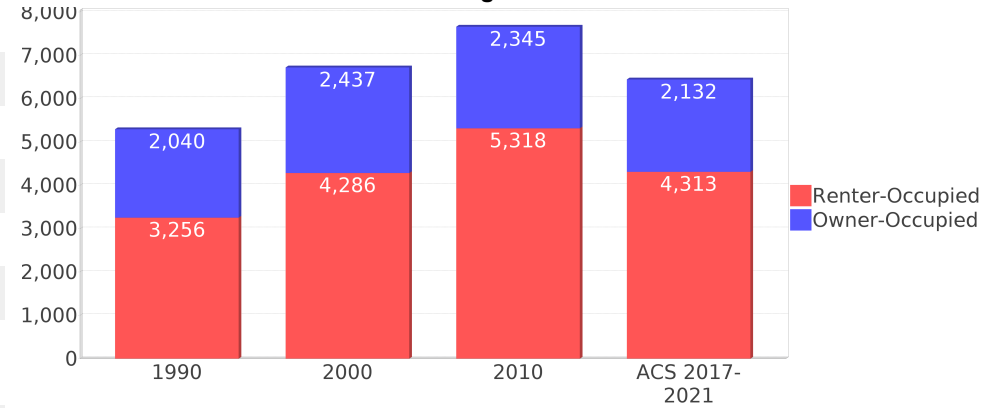
Age 5 and Over

Description	1990	2000	2010 <sup>1</sup>	ACS 2017-2021
Speaks English Well	1,108 (8.69%)	2,835 (15.50%)	3,572 (19.14%)	3,583 (14.95%)
Speaks English Not Well	NA (NA)	2,293 (12.54%)	3,293 (17.64%)	2,938 (12.26%)
Speaks English Not at All	NA (NA)	893 (4.88%)	1,023 (5.48%)	2,344 (9.78%)
Speaks English Not Well or Not at All	761 (5.97%)	3,186 (17.42%)	4,316 (23.12%)	5,282 (22.04%)
Speaks English Less than Very Well	NA (NA)	6,023 (32.93%)	7,889 (42.26%)	8,866 (36.99%)

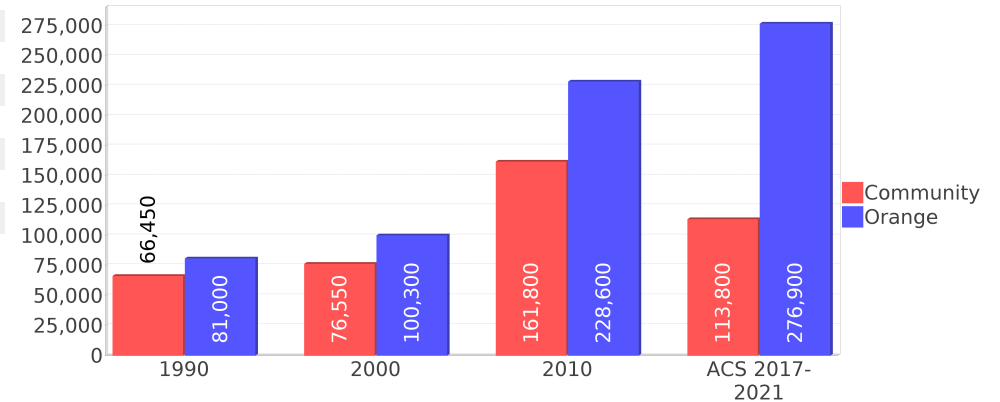
## Housing Trends <sup>5</sup>

Description	1990	2000	2010 <sup>1</sup>	ACS 2017-2021
Total	5,859	7,124	8,572	8,269
Units per Acre	2.57	3.51	4.60	4.43
Single-Family Units	2,221	2,786	2,966	3,602
Multi-Family Units	2,907	4,186	5,358	4,489
Mobile Home Units	128	151	244	178
Owner-Occupied Units	2,040	2,437	2,345	2,132
Renter-Occupied Units	3,256	4,286	5,318	4,313
Vacant Units	562	401	909	1,823
Median Housing Value	\$66,450	\$76,550	\$161,800	\$113,800
Occupied Housing Units w/No Vehicle	322 (6.08%)	861 (12.81%)	627 (8.18%)	1,021 (15.84%)

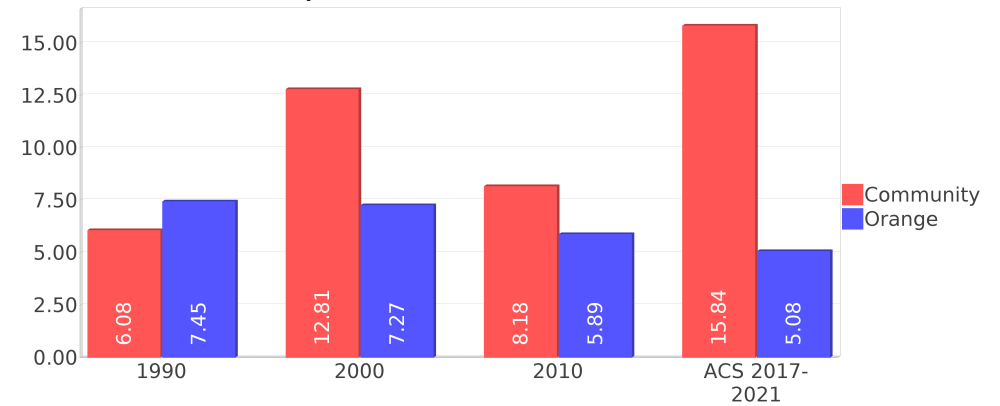
### Housing Tenure



### Median Housing Value Comparison



### Occupied Units With No Vehicles Available



### Geographic Mobility

Description	ACS 2017-2021
Median year householder moved into unit - Total	2016
Median year householder moved into unit - Owner Occupied	1999
Median year householder moved into unit - Renter Occupied	2016
Abroad 1 year ago	491
Different house in United States 1 year ago	4,115
Same house 1 year ago	20,533
Geographical Mobility in the Past Year - Total	25,140

### Computers and Internet

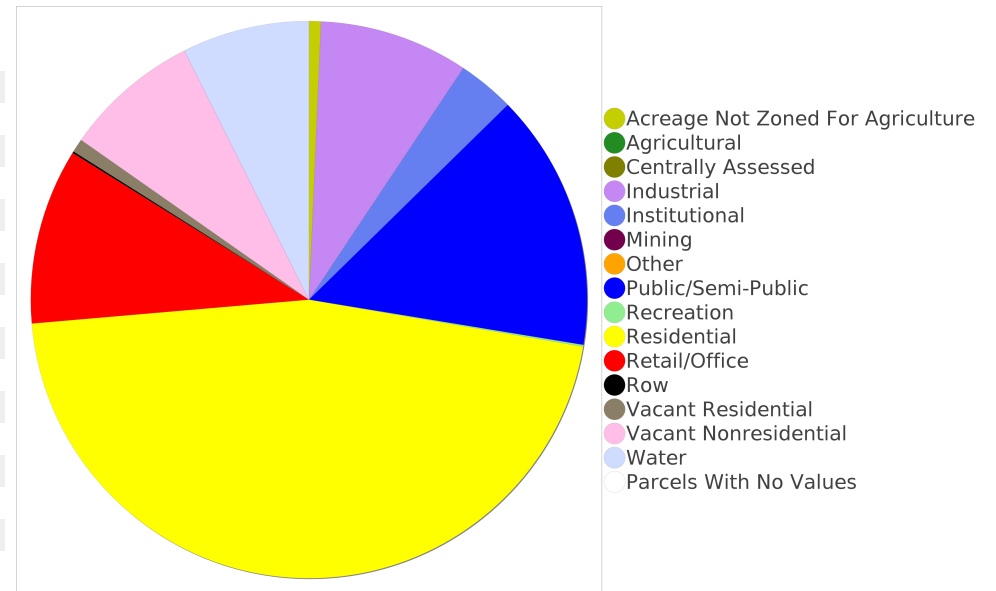
Description	ACS 2017-2021
Total Households Types of Computers in HH	6,446
Households with 1 or more device	6,091
Households with no computer	354
Total Households Presence and Types of Internet Subscriptions	6,446
Households with an internet subscription	5,101
Households with internet access without a subscription	254
Households with no internet access	1,089

### Household Languages

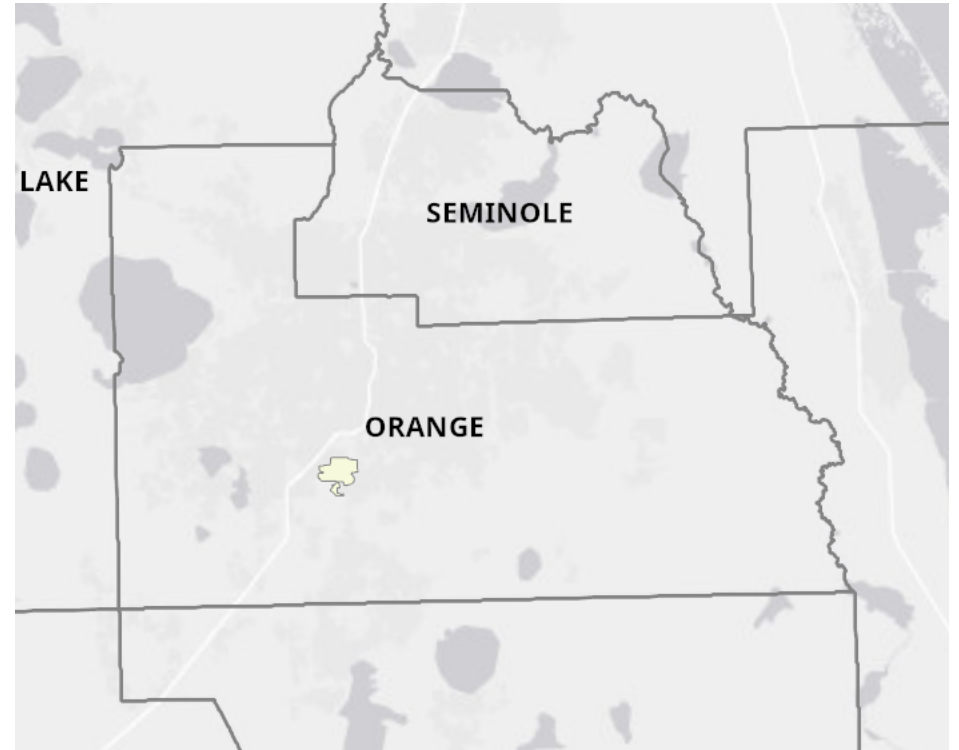
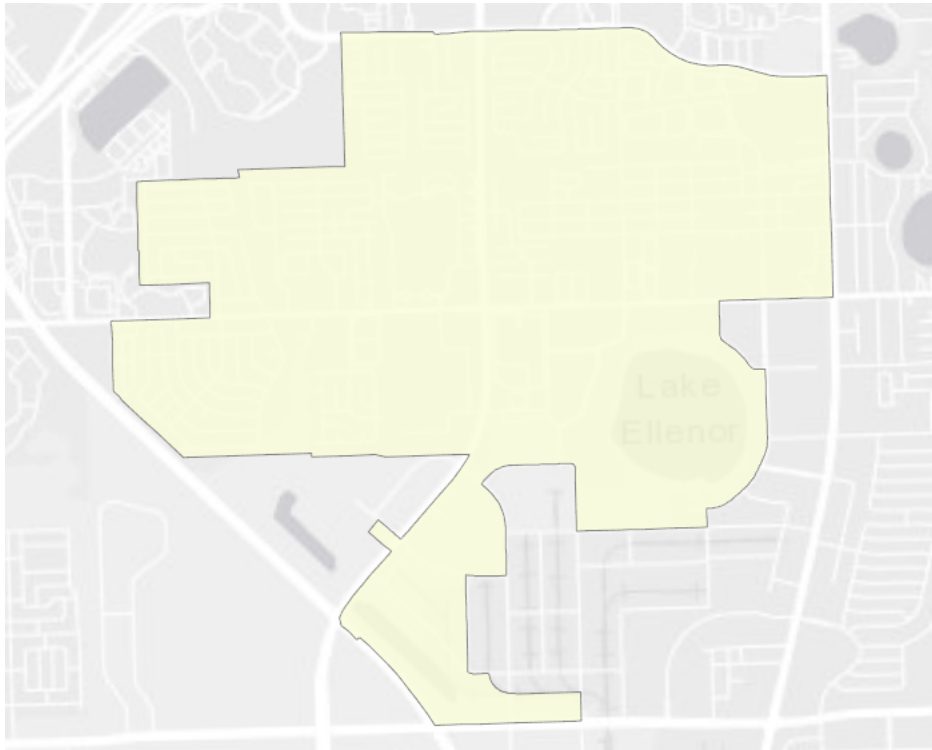
Description	ACS 2017-2021
Total Households by Household Language	6,446
Household Not Limited English Speaking Status	4,934
Spanish: Limited English speaking household	1,287
Indo-European languages: Limited English speaking household	153
Asian and Pacific Island languages: Limited English speaking household	70
Other languages: Limited English speaking household	0

### Existing Land Use <sup>15</sup>

Land Use Type	Acres	Percentage
Acreage Not Zoned For Agriculture	14	0.59%
Agricultural	0	0.00%
Centrally Assessed	0	0.00%
Industrial	176	7.37%
Institutional	67	2.81%
Mining	0	0.00%
Other	<0.5	<0.02%
Public/Semi-Public	303	12.69%
Recreation	2	0.08%
Residential	932	39.03%
Retail/Office	207	8.67%
Row	2	0.08%
Vacant Residential	16	0.67%
Vacant Nonresidential	160	6.70%
Water	150	6.28%
Parcels With No Values	<0.5	<0.02%



## Location Maps



## Community Facilities

The community facilities information below is useful in a variety of ways for environmental evaluations. These community resources should be evaluated for potential sociocultural effects, such as accessibility and relocation potential. The facility types may indicate the types of population groups present in the project study area. Facility staff and leaders can be sources of community information such as who uses the facility and how it is used. Additionally, community facilities are potential public meeting venues.

### Assisted Rental Housing Units

Facility Name	Address	Zip Code
CITRUS GLEN	5351 LIMELIGHT CIRCLE	32839
HIDDEN CREEK VILLAS	2001 RIVERTREE CIRCLE	32839
OAK HARBOR	5770 HARBOR CHASE CIRCLE	32839
POINTE VISTA II	5455 POINTE VISTA CIRCLE	32839
CITRUS GLEN II	5351 LIMELIGHT CIRCLE	32839
POINTE VISTA	5455 POINTE VISTA CIRCLE	32839

### Community and Fraternal Centers

Facility Name	Address	Zip Code
ORANGE COUNTY COMMUNITY CENTERS	6225 BROOKGREEN AVE	32809

### Cultural Centers

Facility Name	Address	Zip Code
FLORIDA COLLEGE OF INTEGRATIVE MEDICINE LIBRARY	7100 LAKE ELLENOR DR	32809

### Religious Centers

Facility Name	Address	Zip Code
IGLESIA EL CALVARIO	2500 WEST OAK RIDGE ROAD	32809
TRUE VINE BAPTIST CHURCH	1711 ROSE BOULEVARD	32839
BOCHASANWASI SHREE AKSHAR PURUSHOTTAM SWAMINARAYAN	1325 WEST OAK RIDGE ROAD	32809
IGELESIA SUR	5721 S TEXAS AVE	32839
BETHEL FRENCH SDA CHURCH	5431 S RIO GRANDE AVENUE	32839
OAK RIDGE BAPTIST CHURCH	3833 W OAK RIDGE ROAD	32809
ASSEMBLY OF GOD CHURCH-ORLANDO	4151 W OAK RIDGE ROAD	32809
FIRST BAPTIST CHURCH	1900 WAKULLA WAY	32839

### Public Schools

Facility Name	Address	Zip Code
WESTRIDGE MIDDLE	3800 W OAK RIDGE RD	32809
ORANGE TECHNICAL COLLEGE MID FLORIDA CAMPUS	2900 W OAK RIDGE RD	32809
FLORIDA COLLEGE OF INTEGRATIVE MEDICINE	7100 LAKE ELLENOR DR	32809
SADLER ELEMENTARY	4000 W OAK RIDGE RD	32809
PALMETTO ELEMENTARY	2015 DUSKIN AVE	32839

## Mobile Home Parks

Facility Name	Address	Zip Code
CARRIAGE COURT CENTRAL MOBILE HOME PARK	4820 W OAK RIDGE RD	32809
MEDALLION MOBILE PARK	1315 VAGABOND LN	32839

## Group Care Facilities

Facility Name	Address	Zip Code
IMMACULEE HOME CARE ALF	5758 OAK HILL MANOR DRIVE	32839
SADLER ELEMENTARY	4000 W OAK RIDGE ROAD	32809
SUNRISE DETOX ORLANDO, LLC	2431 W SAND LAKE ROAD	32809
PALMETTO ELEMENTARY	2015 DUSKIN AVENUE	32839
CENTRAL FLORIDA DETOX, LLC	6000 LAKE ELLENOR DRIVE	32809
WESTRIDGE MIDDLE SCHOOL	3800 W OAK RIDGE ROAD	32809
CALVARY CITY CHRISTIAN ACADEMY AND PRESCHOOL	2500 W OAK RIDGE ROAD	32809
PATHWAY SCHOOL	1877 OAK RIDGE ROAD	32809

## Block Groups

The following Census Block Groups were used to calculate demographics for this report.

### 1990 Census Block Groups

120950169024, 120950169014, 120950169023, 120950169011, 120950169021, 120950169012, 120950169013, 120950170011, 120950145003, 120950143013

### 2000 Census Block Groups

120950169032, 120950169024, 120950169023, 120950169021, 120950169051, 120950143013, 120950169041, 120950145012, 120950169031, 120950169052

### 2010 Census Block Groups

120950169041, 120950169071, 120950169023, 120950169031, 120950143013, 120950169072, 120950169061, 120950169021, 120950169032, 120950169022, 120950145041

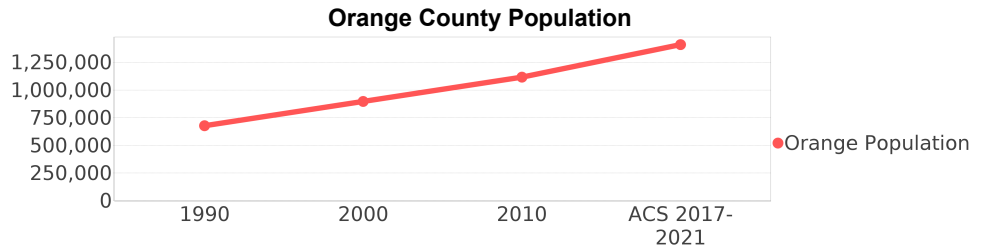
### Census Block Groups

120950169023, 120950169081, 120950169073, 120950169071, 120950143021, 120950169113, 120950169101, 120950169061, 120950169091, 120950143013, 120950169022, 120950169021, 120950145044, 120950145041, 120950169042, 120950145042, 120950169041, 120950169074, 120950169114, 120950169082, 120950169092, 120950169072, 120950169062

# Orange County Demographic Profile

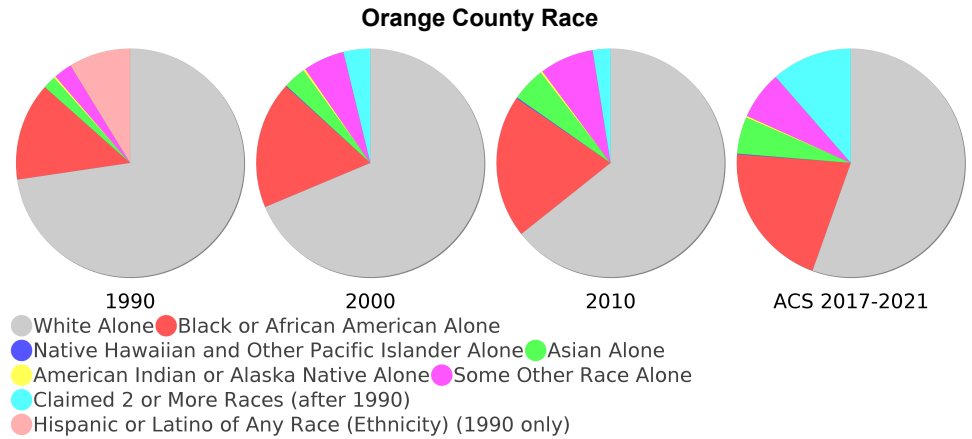
## General Population Trends - Orange <sup>5</sup>

Description	1990	2000	2010 <sup>1</sup>	ACS 2017-2021
Total Population	677,491	896,344	1,116,094	1,409,949
Total Households	254,852	336,286	406,002	475,292
Average Persons per Acre	1.054	1.396	1.738	2.20
Average Persons per Household	2.658	2.609	3.00	2.90
Average Persons per Family	3.149	3.241	3.379	3.61
Males	336,061	442,441	550,254	694,646



## Race and Ethnicity Trends - Orange <sup>5, 8, 9</sup>

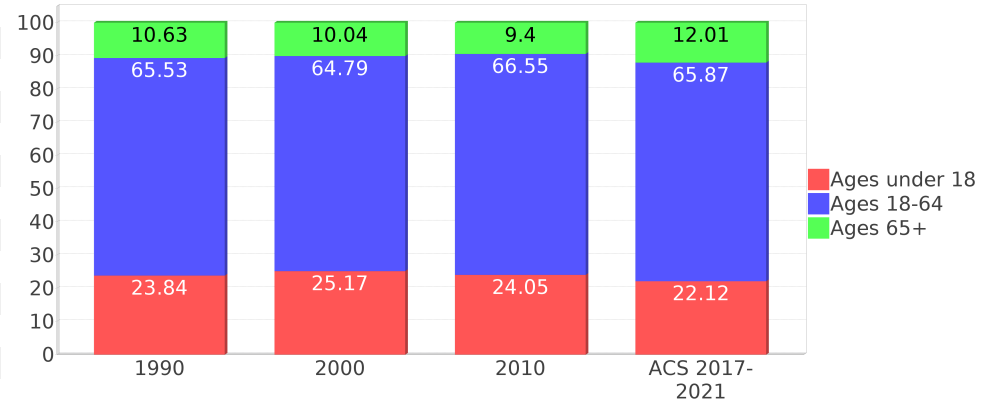
Description	1990	2000	2010 <sup>1</sup>	ACS 2017-2021
White Alone	539,061 (79.57%)	615,706 (68.69%)	717,711 (64.31%)	781,989 (55.46%)
Black or African American Alone	103,092 (15.22%)	161,558 (18.02%)	226,111 (20.26%)	292,384 (20.74%)
Native Hawaiian and Other Pacific Islander Alone	(NA)	853 (0.10%)	1,547 (0.14%)	1,377 (0.10%)
Asian Alone	13,469 (1.99%)	28,748 (3.21%)	53,326 (4.78%)	73,495 (5.21%)
American Indian or Alaska Native Alone	2,036 (0.30%)	2,862 (0.32%)	3,560 (0.32%)	3,337 (0.24%)
Some Other Race Alone	19,308 (2.85%)	52,568 (5.86%)	85,645 (7.67%)	95,860 (6.80%)
Claimed 2 or More Races	(NA)	34,049 (3.80%)	28,194 (2.53%)	161,507 (11.45%)
Hispanic or Latino of Any Race (Ethnicity)	64,946 (9.59%)	168,191 (18.76%)	287,760 (25.78%)	459,438 (32.59%)
Not Hispanic or Latino (Ethnicity)	612,545 (90.41%)	728,153 (81.24%)	828,334 (74.22%)	950,511 (67.41%)
Minority (Race and Ethnicity)	180,947 (26.71%)	380,320 (42.43%)	619,202 (55.48%)	870,775 (61.76%)



## Age Trends - Orange <sup>5</sup>

Description	1990	2000	2010 <sup>1</sup>	ACS 2017-2021
Under Age 5	7.36%	6.81%	6.69%	5.91%
Ages 5-17	16.48%	18.35%	17.35%	16.20%
Ages 18-21	7.25%	6.19%	7.08%	5.72%
Ages 22-29	15.98%	12.79%	13.88%	12.97%
Ages 30-39	18.06%	17.43%	14.88%	15.55%
Ages 40-49	11.98%	15.36%	14.79%	13.78%
Ages 50-64	12.26%	13.03%	15.93%	17.86%
Age 65 and Over	10.63%	10.04%	9.40%	12.01%
-Ages 65-74	6.51%	5.52%	5.18%	7.41%
-Ages 75-84	3.16%	3.50%	3.07%	3.27%
-Age 85 and Over	0.96%	1.02%	1.16%	1.33%
Median Age	NA	33	33	35.7

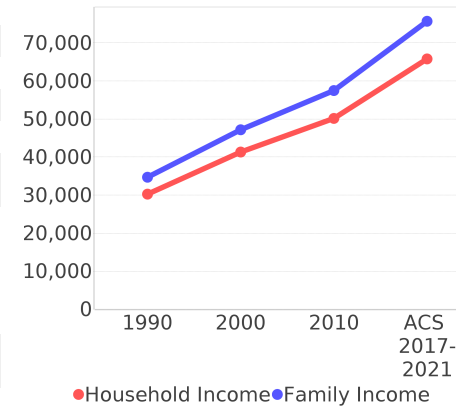
Percentage Population by Age Group - Orange



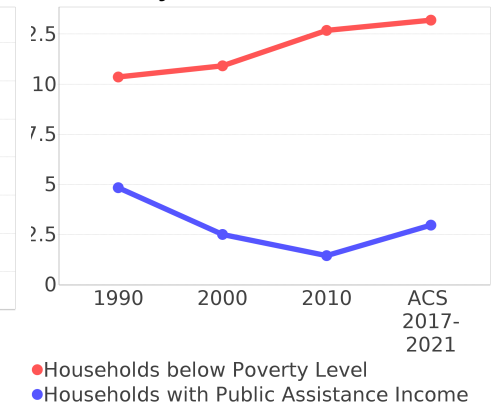
## Income Trends - Orange <sup>5</sup>

Description	1990	2000	2010 <sup>1</sup>	ACS 2017-2021
Median Household Income	\$30,252	\$41,311	\$50,138	\$65,784
Median Family Income	\$34,670	\$47,159	\$57,473	\$75,679
Population below Poverty Level	11.25%	12.11%	13.42%	13.90%
Households below Poverty Level	10.35%	10.91%	12.68%	13.19%
Households with Public Assistance Income	4.83%	2.50%	1.44%	2.96%

Income Trends



Poverty and Public Assistance



## Disability Trends - Orange <sup>10</sup>

See the Data Sources section below for an explanation about the differences in disability data among the various years.

Description	1990	2000	2010 <sup>1</sup>	ACS 2017-2021
Population 16 To 64 Years with a disability	33,640 (6.57%)	119,793 (14.56%)	NA (NA)	NA (NA)
Population 20 To 64 Years with a disability	NA (NA)	NA (NA)	NA (NA)	81,765 (9.30%)

## Educational Attainment Trends - Orange <sup>11, 5</sup>

Age 25 and Over

Description	1990	2000	2010 <sup>1</sup>	ACS 2017-2021
Less than 9th Grade	29,815 (6.90%)	31,431 (5.47%)	36,515 (5.16%)	40,159 (4.21%)
9th to 12th Grade, No Diploma	61,781 (14.29%)	73,160 (12.74%)	56,288 (7.95%)	60,336 (6.32%)
High School Graduate or Higher	340,597 (78.81%)	469,510 (81.78%)	615,181 (86.89%)	853,611 (89.47%)
Bachelor's Degree or Higher	91,722 (21.22%)	150,009 (26.13%)	214,780 (30.34%)	340,640 (35.70%)

## Language Trends - Orange <sup>5</sup>

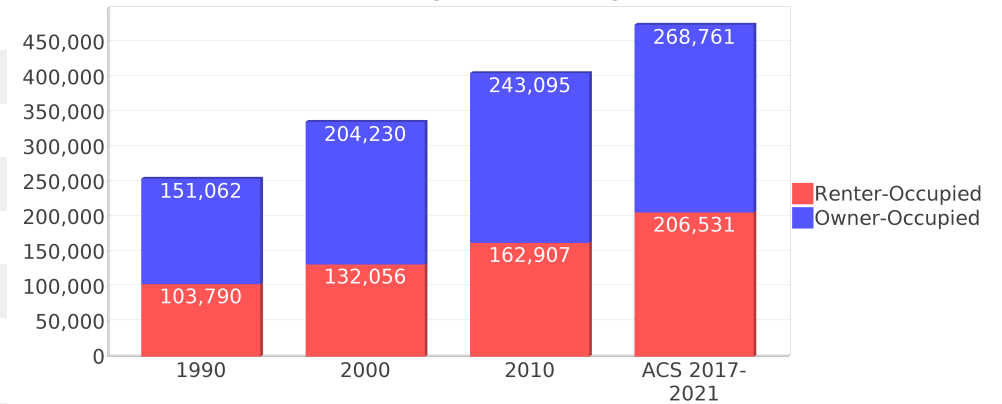
Age 5 and Over

Description	1990	2000	2010 <sup>1</sup>	ACS 2017-2021
Speaks English Well	20,163 (3.21%)	47,230 (5.65%)	65,314 (6.27%)	97,622 (7.36%)
Speaks English Not Well	NA (NA)	30,937 (3.70%)	49,410 (4.74%)	68,120 (5.14%)
Speaks English Not at All	NA (NA)	9,102 (1.09%)	18,544 (1.78%)	29,540 (2.23%)
Speaks English Not Well or Not at All	13,943 (2.22%)	40,039 (4.79%)	67,954 (6.53%)	97,660 (7.36%)
Speaks English Less than Very Well	NA (NA)	87,269 (10.45%)	133,268 (12.80%)	195,282 (14.72%)

## Housing Trends - Orange <sup>5</sup>

Description	1990	2000	2010 <sup>1</sup>	ACS 2017-2021
Total	282,686	361,349	474,757	554,517
Units per Acre	0.44	0.563	0.739	0.86
Single-Family Units	161,010	227,164	297,590	348,310
Multi-Family Units	73,974	113,760	156,040	187,171
Mobile Home Units	17,720	20,068	21,038	18,710
Owner-Occupied Units	151,062	204,230	243,095	268,761
Renter-Occupied Units	103,790	132,056	162,907	206,531
Vacant Units	27,834	25,063	68,755	79,225
Median Housing Value	\$81,000	\$100,300	\$228,600	\$276,900
Occupied Housing Units w/No Vehicle	18,991 (7.45%)	24,460 (7.27%)	23,926 (5.89%)	24,148 (5.08%)
Median year householder moved into unit - Total	NA	NA	NA	2015
Median year householder moved into unit - Owner Occupied	NA	NA	NA	2010
Median year householder moved into unit - Renter Occupied	NA	NA	NA	2017
Abroad 1 year ago	NA	NA	NA	24,188
Different house in United States 1 year ago	NA	NA	NA	211,017
Same house 1 year ago	NA	NA	NA	1,161,608
Geographical Mobility in the Past Year - Total	NA	NA	NA	1,161,608

## Housing Tenure - Orange



# Data Sources

## ACS vs Census Data

(1) The 2010 Census data is represented by a combination of decennial and ACS (2006-2010) data. The General Population Trends, Race and Ethnicity Trends, Age Trends are entirely from decennial. The Income Trends, Language Trends are entirely from the ACS. The Housing Trends section is derived from both: Decennial (Total # Housing Units, Housing Units per Acre, Owner-Occupied Units, Renter-Occupied Units, Vacant Units); ACS (Single Family Units, Multi-family Units, Mobile Homes, Median Housing Value, Occupied Housing Units w/No Vehicle).

## Area

(2) The geographic area of the community based on a user-defined community boundary or area of interest (AOI) boundary.

## Jurisdiction

(3) Jurisdiction(s) includes local government boundaries that intersect the user-defined community or AOI boundary.

## Goals, Values and History

(4) Information under the headings Goals and Values and History is entered manually by the user before the Sociocultural Data Report (SDR) is generated. This information is usually not available for communities with boundaries that are based on Census-defined places (i.e., not user-specified).

## Demographic Data

(5) Demographic data reported under the headings General Population Trends, Race and Ethnicity Trends, Age Trends, Income Trends, Educational Attainment Trends, Language Trends, and Housing Trends is from the U.S. Decennial Census for 1990 and 2000 and the American Community Survey (ACS) 5-year estimates for 2006-2010 and ACS 2017-2021. The data was gathered at the block group level for user-defined communities, Census places, and AOIs, and at the county level for counties. Depending on the dataset, the data represents 100% counts (Census Summary File 1) or sample-based information (Census Summary File 3 or ACS). For more information about using demographic data, please see the training videos located here: <https://www.fdot.gov/environment/pubs/sce/sce1.shtm>.

## About the Census Data

(6) The block group analysis for ETDM project analysis areas, user-defined communities, Census places, and AOI boundaries do not always correspond precisely to block group boundaries. To estimate the actual population more accurately, the SDR analysis adjusts the geographic area and data of affected block groups using the following methodology:

Delete overlapping census blocks with extremely low populations (2 or fewer people)  
Remove the portion of the block group that lies outside of the analysis area  
Recalculate the demographics assuming an equal area distribution of the population

Note that there may be areas where there is no population.

(7) Use caution when comparing the 100% count data (Decennial Census) to the sample-based data (ACS). In any given year, about one in 40 U.S. households will receive the ACS questionnaire. Over any five-year period, about one in eight households will receive the questionnaire, as compared to about one in six that received the long form questionnaire for the Decennial Census 2000. (Source: [https://www.census.gov/content/dam/Census/programs-surveys/acs/news/10ACS\\_keyfacts.pdf](https://www.census.gov/content/dam/Census/programs-surveys/acs/news/10ACS_keyfacts.pdf)) The U.S. Census Bureau provides help with this process: <https://www.census.gov/programs-surveys/acs/guidance/comparing-acs-data.html>

(8) Race and ethnicity are separate questions on the Census questionnaire. Individuals can report multiple race and ethnicity answers; therefore, numbers in the Race and Ethnicity portion of this report may add up to be greater than the total population. In addition, use caution when interpreting changes in race and ethnicity over time. Starting with the 2000 Decennial Census, respondents could select one or more race categories. Also in 2000, the placement of the question about Hispanic origin changed, helping to increase responsiveness to the Hispanic-origin question. Because of these and other changes, the 1990 data on race and ethnicity are not directly comparable with data from later censuses. (Source: <https://www.census.gov/library/publications/2001/dec/c2kbr01-01.html>)

(9) The "Minority" calculations use both the race and ethnicity responses from Census and ACS data. In this report, "Minority" refers to individuals who list a race other than White and/or list their ethnicity as Hispanic/Latino. In other words, people who are multi-racial, any single race other than White, or Hispanic/Latino of any race are considered minorities. We use the following formula:  $MINORITY = TOTALPOP - WHITE\_NH$  where TOTALPOP is the Total Population and WHITE\_NH is the population with a race of White alone and an ethnicity of Not Hispanic or Latino. Translating this to the field names used in the census ACS source data, the formula looks like this:  $MINORITY = B01003\_E001 - B03002\_E003$ . (Note, the WHITE\_NH population is not reported separately in this report.)

(10) Disability data is not included in the 2010 Decennial Census or the 2006-2010 ACS. This data is available in the ACS 2017-2021 ACS. Because of changes made to the Census and ACS questions between 1990 and ACS, disability variables should not be compared from year to year. For example: 1) with the 1990 data, the disabilities are listed as a "work disability" while this distinction is not made with 2000 or ACS data; 2) the ACS data includes the institutionalized population (e.g. persons in prisons and group homes) while this population is not included in 1990 or 2000; and 3) the age groupings changed over the years.

(11) The category Bachelor's Degree or Higher under the heading Educational Attainment Trends is a subset of the category High School Graduate or Higher.

(12) Income of households. This includes the income of the householder and all other individuals 15 years old and over in the household, whether they are related to the householder or not. Because many households consist of only one person, average household income is usually less than average family income.

(13) Income of families. In compiling statistics on family income, the incomes of all members 15 years old and over related to the householder are summed and treated as a single amount.

(14) Age trends. The median age for 1990 is not available.

## Land Use Data

(15) The Land Use information Indicates acreages and percentages for the generalized land use types used to group parcel-specific, existing land use assigned by the county property appraiser office according to the Florida Department of Revenue land use codes.

## Community Facilities Data

- (16) Assisted Rental Housing Units - Identifies multifamily rental developments that receive funding assistance under federal, state, and local government programs to offer affordable housing as reported by the Shimberg Center for Housing Studies, University of Florida.
- (17) Mobile Home Parks - Identifies approved or acknowledged mobile home parks reported by the Florida Department of Business and Professional Regulation and Florida Department of Health.
- (18) Migrant Camps - Identifies migrant labor camp facilities inspected by the Florida Department of Health.
- (19) Group Care Facilities - Identifies group care facilities inspected by the Florida Department of Health.
- (20) Community Center and Fraternal Association Facilities - Identifies facilities reported by multiple sources.
- (21) Law Enforcement Correctional Facilities - Identifies facilities reported by multiple sources.
- (22) Cultural Centers - Identifies cultural centers including organizations, buildings, or complexes that promote culture and arts (e.g., aquariums and zoological facilities; arboreta and botanical gardens; dinner theaters; drive-ins; historical places and services; libraries; motion picture theaters; museums and art galleries; performing arts centers; performing arts theaters; planetariums; studios and art galleries; and theater producers stage facilities) reported by multiple sources.
- (23) Fire Department and Rescue Station Facilities - Identifies facilities reported by multiple sources.
- (24) Government Buildings - Identifies local, state, and federal government buildings reported by multiple sources.
- (25) Health Care Facilities - Identifies health care facilities including abortion clinics, dialysis clinics, medical doctors, nursing homes, osteopaths, state laboratories/clinics, and surgicenters/walk-in clinics reported by the Florida Department of Health.
- (26) Hospital Facilities - Identifies hospital facilities reported by multiple sources.
- (27) Law Enforcement Facilities - Identifies law enforcement facilities reported by multiple sources.
- (28) Parks and Recreational Facilities - Identifies parks and recreational facilities reported by multiple sources.
- (29) Religious Center Facilities - Identifies religious centers including churches, temples, synagogues, mosques, chapels, centers, and other types of religious facilities reported by multiple sources.
- (30) Private and Public Schools - Identifies private and public schools reported by multiple sources.
- (31) Social Service Centers - Identifies social service centers reported by multiple sources.
- (32) Veteran Organizations and Facilities

# County Data Sources

## ACS vs Census Data

(1) The 2010 Census data is represented by a combination of decennial and ACS (2006-2010) data. The General Population Trends, Race and Ethnicity Trends, Age Trends are entirely from decennial. The Income Trends, Language Trends are entirely from the ACS. The Housing Trends section is derived from both: Decennial (Total # Housing Units, Housing Units per Acre, Owner-Occupied Units, Renter-Occupied Units, Vacant Units); ACS (Single Family Units, Multi-family Units, Mobile Homes, Median Housing Value, Occupied Housing Units w/No Vehicle).

## About the Census Data

(34) Use caution when comparing the 100% count data (Decennial Census) to the sample-based data (ACS). In any given year, about one in 40 U.S. households will receive the ACS questionnaire. Over any five-year period, about one in eight households will receive the questionnaire, as compared to about one in six that received the long form questionnaire for the Decennial Census 2000. (Source: [https://www.census.gov/content/dam/Census/programs-surveys/acs/news/10ACS\\_keyfacts.pdf](https://www.census.gov/content/dam/Census/programs-surveys/acs/news/10ACS_keyfacts.pdf)) The U.S. Census Bureau provides help with this process: <https://www.census.gov/programs-surveys/acs/guidance/comparing-acs-data.html>

(35) Race and ethnicity are separate questions on the Census questionnaire. Individuals can report multiple race and ethnicity answers; therefore, numbers in the Race and Ethnicity portion of this report may add up to be greater than the total population. In addition, use caution when interpreting changes in race and ethnicity over time. Starting with the 2000 Decennial Census, respondents could select one or more race categories. Also in 2000, the placement of the question about Hispanic origin changed, helping to increase responsiveness to the Hispanic-origin question. Because of these and other changes, the 1990 data on race and ethnicity are not directly comparable with data from later censuses. (Source: <https://www.census.gov/library/publications/2001/dec/c2kbr01-01.html>)

(36) The "Minority" calculations use both the race and ethnicity responses from Census and ACS data. In this report, "Minority" refers to individuals who list a race other than White and/or list their ethnicity as Hispanic/Latino. In other words, people who are multi-racial, any single race other than White, or Hispanic/Latino of any race are considered minorities. We use the following formula:  $MINORITY = TOTALPOP - WHITE\_NH$  where TOTALPOP is the Total Population and WHITE\_NH is the population with a race of White alone and an ethnicity of Not Hispanic or Latino. Translating this to the field names used in the census ACS source data, the formula looks like this:  $MINORITY = B01003\_E001 - B03002\_E003$ . (Note, the WHITE\_NH population is not reported separately in this report.)

(37) Disability data is not included in the 2010 Decennial Census or the 2006-2010 ACS. This data is available in the ACS 2017-2021 ACS. Because of changes made to the Census and ACS questions between 1990 and ACS, disability variables should not be compared from year to year. For example: 1) with the 1990 data, the disabilities are listed as a "work disability" while this distinction is not made with 2000 or ACS data; 2) the ACS data includes the institutionalized population (e.g. persons in prisons and group homes) while this population is not included in 1990 or 2000; and 3) the age groupings changed over the years.

(38) The category Bachelor's Degree or Higher under the heading Educational Attainment Trends is a subset of the category High School Graduate or Higher.

## Metadata

- (39) Community and Fraternal Centers [https://etdmpub.florida-estat.org/meta/gc\\_communitycenter.xml](https://etdmpub.florida-estat.org/meta/gc_communitycenter.xml)
- (40) Correctional Facilities in Florida [https://etdmpub.florida-estat.org/meta/gc\\_correctional.xml](https://etdmpub.florida-estat.org/meta/gc_correctional.xml)
- (41) Cultural Centers in Florida [https://etdmpub.florida-estat.org/meta/gc\\_culturecenter.xml](https://etdmpub.florida-estat.org/meta/gc_culturecenter.xml)
- (42) Fire Department and Rescue Station Facilities in Florida [https://etdmpub.florida-estat.org/meta/gc\\_firestat.xml](https://etdmpub.florida-estat.org/meta/gc_firestat.xml)
- (43) Local, State, and Federal Government Buildings in Florida [https://etdmpub.florida-estat.org/meta/gc\\_govbuild.xml](https://etdmpub.florida-estat.org/meta/gc_govbuild.xml)
- (44) Florida Health Care Facilities [https://etdmpub.florida-estat.org/meta/gc\\_health.xml](https://etdmpub.florida-estat.org/meta/gc_health.xml)
- (45) Hospital Facilities in Florida [https://etdmpub.florida-estat.org/meta/gc\\_hospitals.xml](https://etdmpub.florida-estat.org/meta/gc_hospitals.xml)
- (46) Law Enforcement Facilities in Florida [https://etdmpub.florida-estat.org/meta/gc\\_lawenforce.xml](https://etdmpub.florida-estat.org/meta/gc_lawenforce.xml)
- (47) Florida Parks and Recreational Facilities [https://etdmpub.florida-estat.org/meta/gc\\_parks.xml](https://etdmpub.florida-estat.org/meta/gc_parks.xml)
- (48) Religious Centers [https://etdmpub.florida-estat.org/meta/gc\\_religion.xml](https://etdmpub.florida-estat.org/meta/gc_religion.xml)
- (49) Florida Public and Private Schools [https://etdmpub.florida-estat.org/meta/gc\\_schools.xml](https://etdmpub.florida-estat.org/meta/gc_schools.xml)
- (50) Social Service Centers [https://etdmpub.florida-estat.org/meta/gc\\_socialservice.xml](https://etdmpub.florida-estat.org/meta/gc_socialservice.xml)
- (51) Assisted Rental Housing Units in Florida [https://etdmpub.florida-estat.org/meta/gc\\_assisted\\_housing.xml](https://etdmpub.florida-estat.org/meta/gc_assisted_housing.xml)
- (52) Group Care Facilities <https://etdmpub.florida-estat.org/meta/groupcare.xml>
- (53) Mobile Home Parks in Florida [https://etdmpub.florida-estat.org/meta/gc\\_mobilehomes.xml](https://etdmpub.florida-estat.org/meta/gc_mobilehomes.xml)
- (54) Migrant Camps in Florida <https://etdmpub.florida-estat.org/meta/migrant.xml>
- (55) Veteran Organizations and Facilities [https://etdmpub.florida-estat.org/meta/gc\\_veterans.xml](https://etdmpub.florida-estat.org/meta/gc_veterans.xml)
- (56) Generalized Land Use [https://etdmpub.florida-estat.org/meta/lu\\_gen.xml](https://etdmpub.florida-estat.org/meta/lu_gen.xml)
- (57) Census Block Groups in Florida [https://etdmpub.florida-estat.org/meta/e2\\_cenacs\\_cci.xml](https://etdmpub.florida-estat.org/meta/e2_cenacs_cci.xml)
- (58) 1990 Census Block Groups in Florida [https://etdmpub.florida-estat.org/meta/e2\\_cenblkgrp\\_1990\\_cci.xml](https://etdmpub.florida-estat.org/meta/e2_cenblkgrp_1990_cci.xml)
- (59) 2000 Census Block Groups in Florida [https://etdmpub.florida-estat.org/meta/e2\\_cenblkgrp\\_2000\\_cci.xml](https://etdmpub.florida-estat.org/meta/e2_cenblkgrp_2000_cci.xml)
- (60) 2010 Census Block Groups in Florida [https://etdmpub.florida-estat.org/meta/e2\\_cenblkgrp\\_2010\\_cci.xml](https://etdmpub.florida-estat.org/meta/e2_cenblkgrp_2010_cci.xml)