

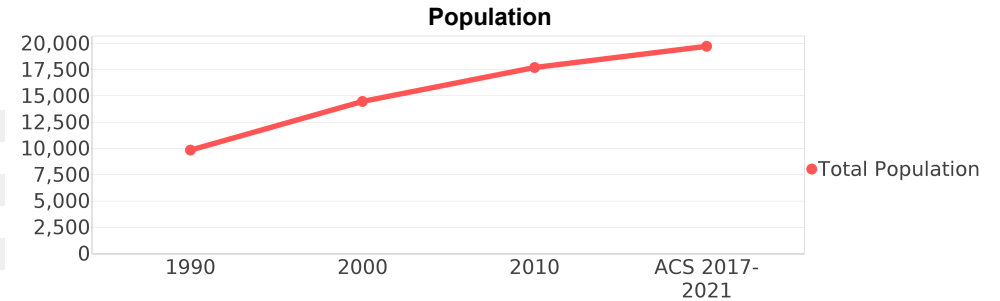
## Palm Valley (CDP)

**Area:** [2](#) 13,608 square miles  
**Jurisdiction - Cities:** [3](#) Jacksonville Beach  
**Jurisdiction - Counties:** [3](#) St Johns, Duval



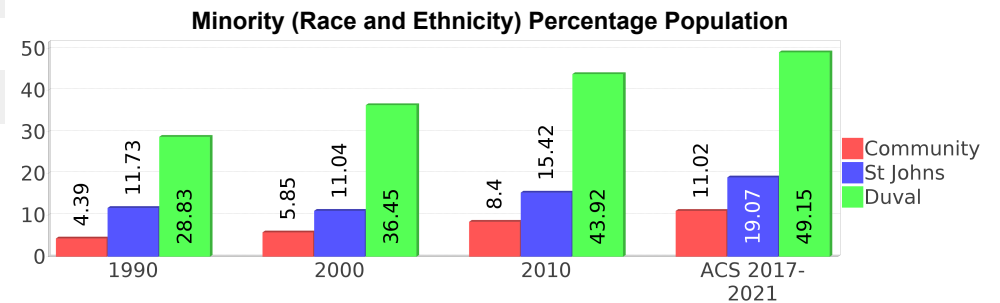
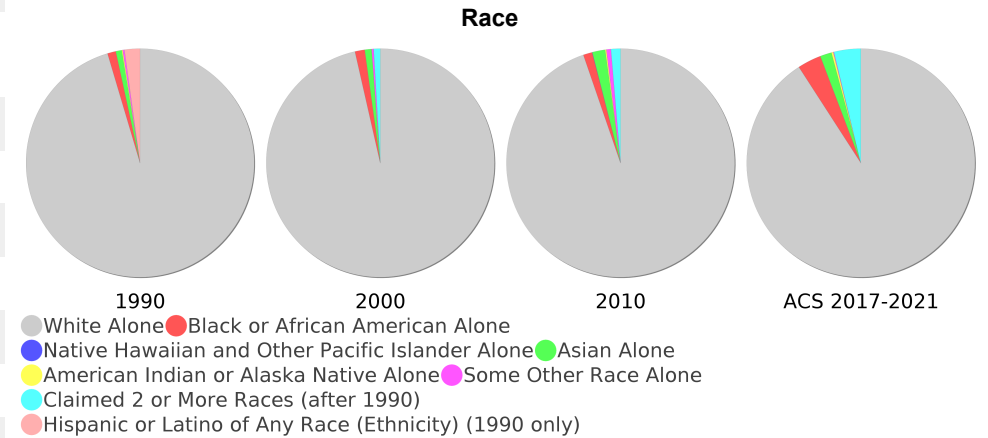
## General Population Trends

Description	1990	2000	2010 <sup>1</sup>	ACS 2017-2021
Total Population	9,853	14,474	17,704	19,732
Total Households	4,216	5,849	7,753	7,927
Average Persons per Acre	1.24	1.60	3.84	3.10
Average Persons per Household	2.32	2.37	2.09	2.40
Average Persons per Family	2.78	2.85	2.86	2.94
Males	4,800	7,085	8,388	10,076
Females	5,053	7,388	9,316	9,656



## Race and Ethnicity Trends <sup>5, 8, 9</sup>

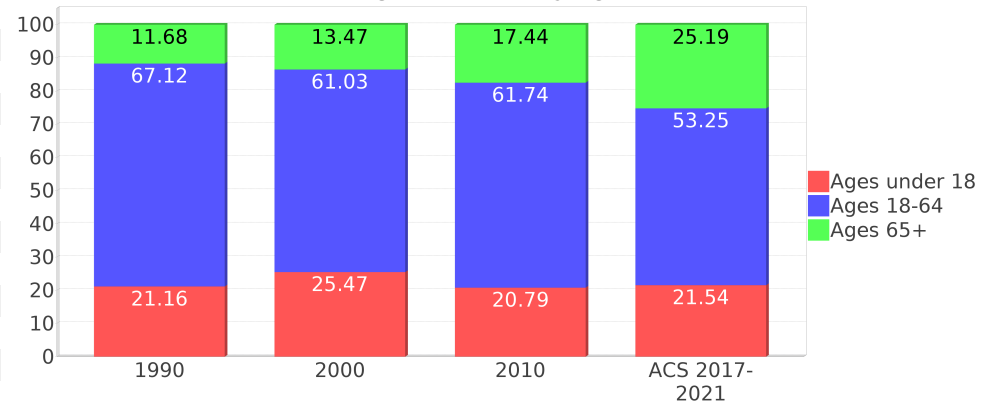
Description	1990	2000	2010 <sup>1</sup>	ACS 2017-2021
White Alone	9,609 (97.52%)	13,956 (96.42%)	16,762 (94.68%)	17,926 (90.85%)
Black or African American Alone	119 (1.21%)	199 (1.37%)	223 (1.26%)	664 (3.37%)
Native Hawaiian and Other Pacific Islander Alone	0 (0.00%)	0 (0.00%)	9 (0.05%)	0 (0.00%)
Asian Alone	85 (0.86%)	140 (0.97%)	322 (1.82%)	321 (1.63%)
American Indian or Alaska Native Alone	15 (0.15%)	0 (0.00%)	30 (0.17%)	52 (0.26%)
Some Other Race Alone	23 (0.23%)	42 (0.29%)	112 (0.63%)	19 (0.10%)
Claimed 2 or More Races	NA (NA)	135 (0.93%)	241 (1.36%)	749 (3.80%)
Hispanic or Latino of Any Race (Ethnicity)	222 (2.25%)	389 (2.69%)	695 (3.93%)	748 (3.79%)
Not Hispanic or Latino (Ethnicity)	9,631 (97.75%)	14,085 (97.31%)	17,009 (96.07%)	18,984 (96.21%)
Minority (Race and Ethnicity)	433 (4.39%)	847 (5.85%)	1,488 (8.40%)	2,174 (11.02%)



## Age Trends <sup>5</sup>

Description	1990	2000	2010 <sup>1</sup>	ACS 2017-2021
Under Age 5	6.15%	5.13%	3.63%	3.75%
Ages 5-17	15.01%	20.34%	17.16%	17.79%
Ages 18-21	4.22%	2.78%	3.89%	3.69%
Ages 22-29	15.30%	6.77%	7.86%	5.83%
Ages 30-39	20.69%	13.82%	8.52%	9.06%
Ages 40-49	15.36%	20.31%	16.17%	12.79%
Ages 50-64	11.54%	17.35%	25.31%	21.88%
Age 65 and Over	11.68%	13.47%	17.44%	25.19%
-Ages 65-74	7.26%	6.87%	9.13%	16.43%
-Ages 75-84	3.52%	4.76%	5.89%	5.65%
-Age 85 and Over	0.88%	1.84%	2.42%	3.11%
Median Age	NA	39	48	52

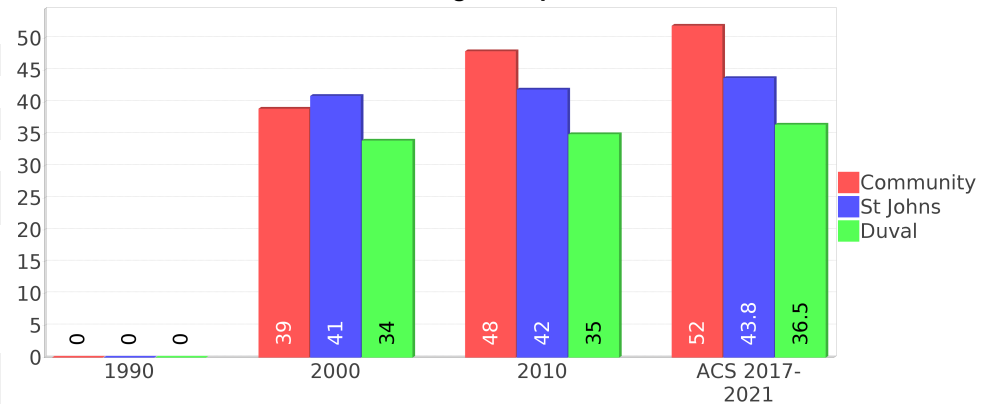
Percentage Population by Age Group



## Income Trends <sup>12, 13, 5</sup>

Description	1990	2000	2010 <sup>1</sup>	ACS 2017-2021
Median Household Income	\$52,086	\$66,515	\$94,483	\$106,229
Median Family Income	\$59,855	\$90,482	\$107,476	\$128,454
Population below Poverty Level	3.07%	3.22%	5.00%	2.90%
Households below Poverty Level	3.06%	3.64%	4.64%	4.33%
Households with Public Assistance Income	1.57%	0.36%	0.21%	0.30%

Median Age Comparison



## Disability Trends <sup>10</sup>

See the Data Sources section below for an explanation about the differences in disability data among the various years.

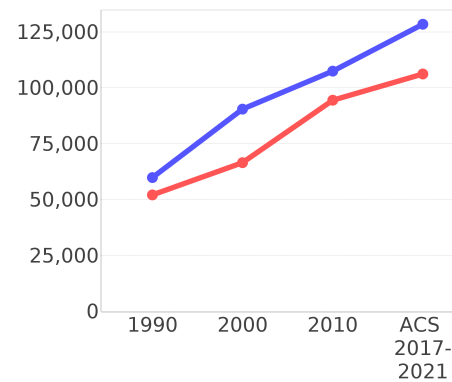
Description	1990	2000	2010 <sup>1</sup>	ACS 2017-2021
Population 16 To 64 Years with a disability	288 (3.73%)	817 (6.01%)	(NA)	(NA)
Population 20 To 64 Years with a disability	(NA)	(NA)	(NA)	827 (8.19%)

## Educational Attainment Trends <sup>11, 5</sup>

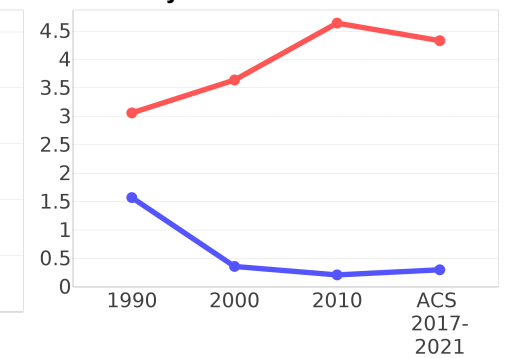
Age 25 and Over

Description	1990	2000	2010 <sup>1</sup>	ACS 2017-2021
Less than 9th Grade	84 (1.20%)	95 (0.94%)	150 (1.16%)	33 (0.23%)
9th to 12th Grade, No Diploma	380 (5.45%)	237 (2.35%)	244 (1.89%)	284 (1.97%)
High School Graduate or Higher	6,510 (93.33%)	9,751 (96.71%)	12,498 (96.94%)	14,119 (97.80%)
Bachelor's Degree or Higher	2,998 (42.98%)	5,621 (55.75%)	7,068 (54.82%)	9,541 (66.09%)

Income Trends



Poverty and Public Assistance



## Language Trends <sup>5</sup>

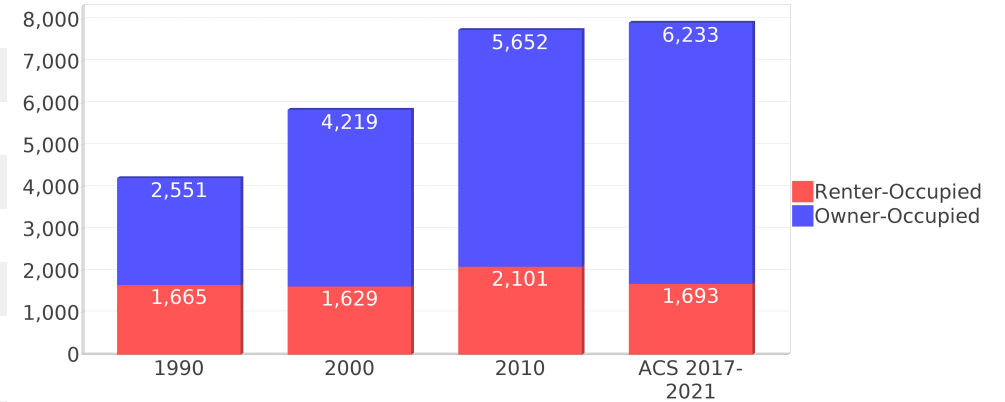
Age 5 and Over

Description	1990	2000	2010 <sup>1</sup>	ACS 2017-2021
Speaks English Well	66 (0.71%)	136 (0.99%)	146 (0.86%)	102 (0.54%)
Speaks English Not Well	NA (NA)	42 (0.31%)	65 (0.38%)	23 (0.12%)
Speaks English Not at All	NA (NA)	40 (0.29%)	33 (0.19%)	0 (0.00%)
Speaks English Not Well or Not at All	92 (0.99%)	82 (0.60%)	98 (0.57%)	23 (0.12%)
Speaks English Less than Very Well	NA (NA)	220 (1.60%)	246 (1.44%)	125 (0.66%)

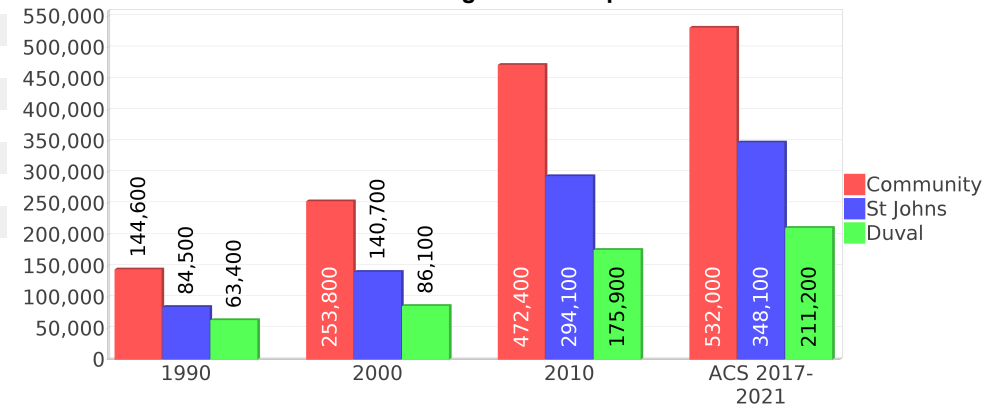
## Housing Trends <sup>5</sup>

Description	1990	2000	2010 <sup>1</sup>	ACS 2017-2021
Total	4,762	6,165	8,551	9,349
Units per Acre	0.57	0.74	1.07	1.16
Single-Family Units	2,680	4,464	6,117	6,238
Multi-Family Units	1,334	1,571	2,572	3,077
Mobile Home Units	173	129	67	33
Owner-Occupied Units	2,551	4,219	5,652	6,233
Renter-Occupied Units	1,665	1,629	2,101	1,693
Vacant Units	545	315	798	1,421
Median Housing Value	\$144,600	\$253,800	\$472,400	\$532,000
Occupied Housing Units w/No Vehicle	109 (2.58%)	68 (1.16%)	221 (2.85%)	110 (1.39%)

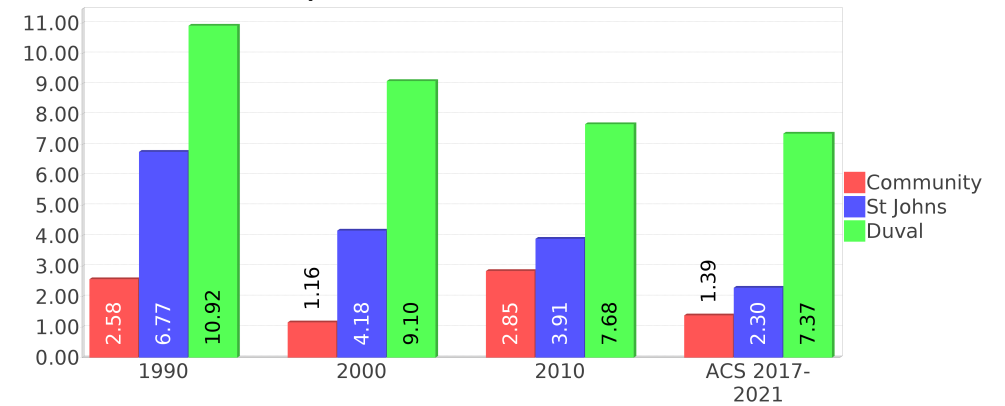
## Housing Tenure



## Median Housing Value Comparison



## Occupied Units With No Vehicles Available



## Geographic Mobility

Description	ACS 2017-2021
Median year householder moved into unit - Total	2012
Median year householder moved into unit - Owner Occupied	2009
Median year householder moved into unit - Renter Occupied	2017
Abroad 1 year ago	121
Different house in United States 1 year ago	2,893
Same house 1 year ago	16,577
Geographical Mobility in the Past Year - Total	19,591

## Computers and Internet

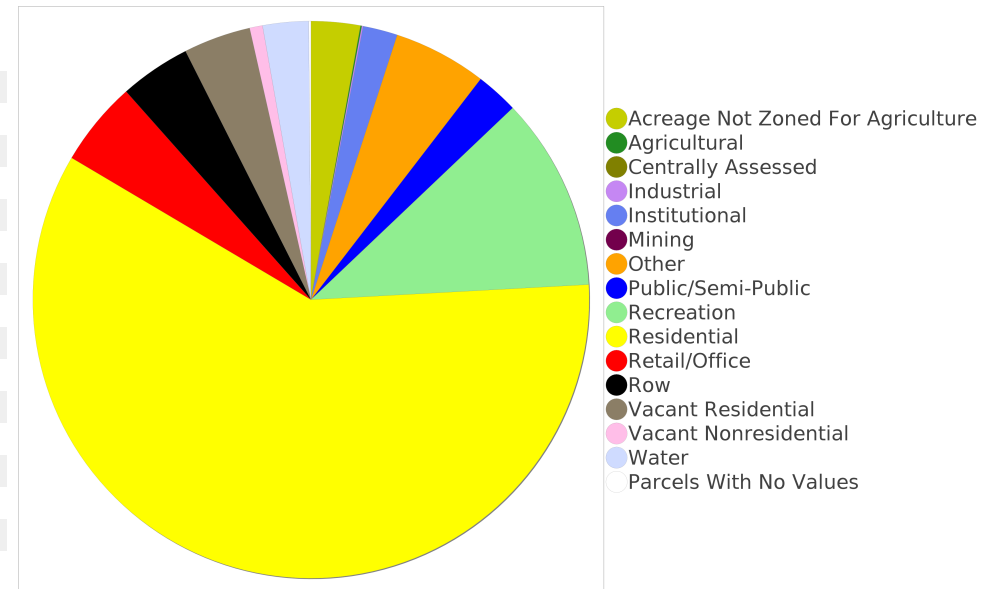
Description	ACS 2017-2021
Total Households Types of Computers in HH	7,927
Households with 1 or more device	7,712
Households with no computer	215
Total Households Presence and Types of Internet Subscriptions	7,927
Households with an internet subscription	7,533
Households with internet access without a subscription	124
Households with no internet access	270

## Household Languages

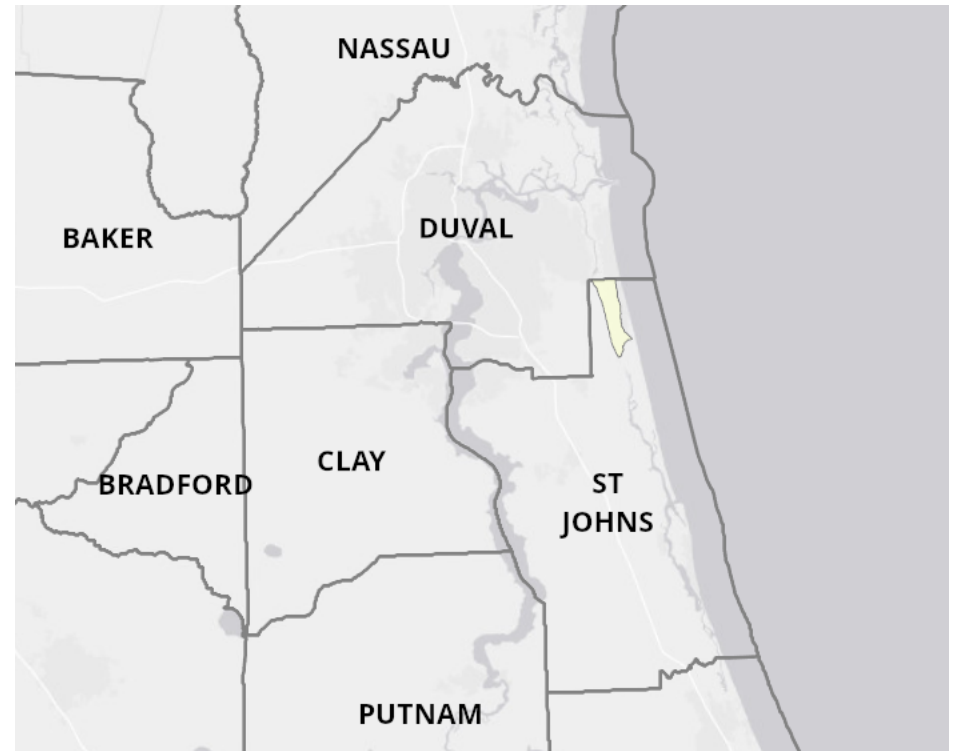
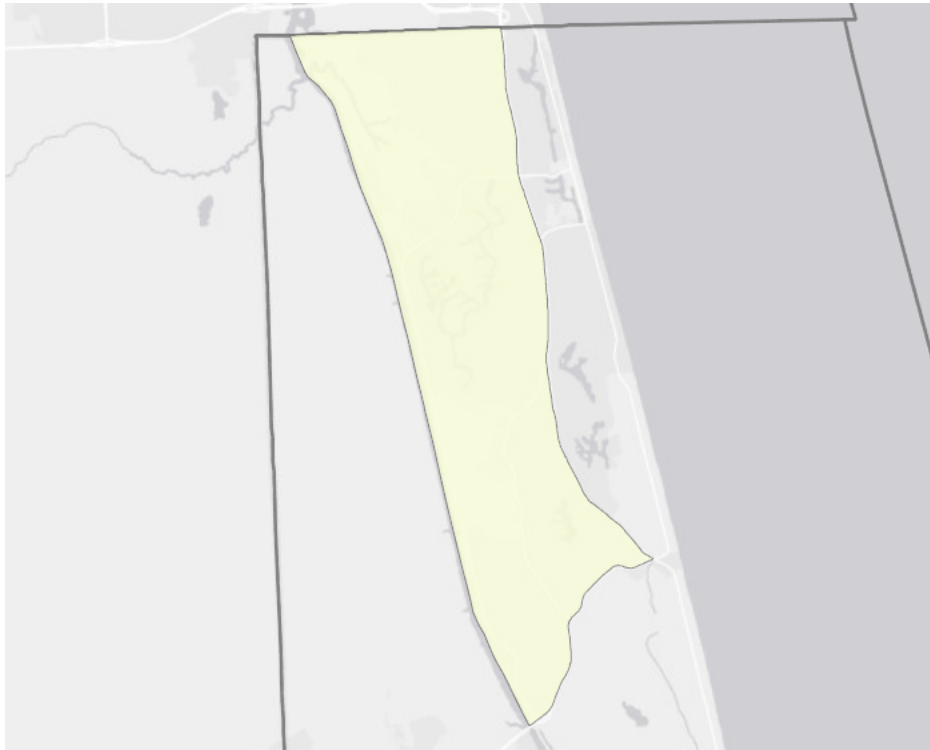
Description	ACS 2017-2021
Total Households by Household Language	7,927
Household Not Limited English Speaking Status	7,872
Spanish: Limited English speaking household	33
Indo-European languages: Limited English speaking household	13
Asian and Pacific Island languages: Limited English speaking household	9
Other languages: Limited English speaking household	0

## Existing Land Use <sup>15</sup>

Land Use Type	Acres	Percentage
Acreage Not Zoned For Agriculture	248	2.85%
Agricultural	7	0.08%
Centrally Assessed	0	0.00%
Industrial	7	0.08%
Institutional	175	2.01%
Mining	0	0.00%
Other	472	5.42%
Public/Semi-Public	215	2.47%
Recreation	977	11.22%
Residential	5,167	59.33%
Retail/Office	429	4.93%
Row	359	4.12%
Vacant Residential	340	3.90%
Vacant Nonresidential	65	0.75%
Water	232	2.66%
Parcels With No Values	11	0.13%



## Location Maps



## Community Facilities

The community facilities information below is useful in a variety of ways for environmental evaluations. These community resources should be evaluated for potential sociocultural effects, such as accessibility and relocation potential. The facility types may indicate the types of population groups present in the project study area. Facility staff and leaders can be sources of community information such as who uses the facility and how it is used. Additionally, community facilities are potential public meeting venues.

### Community and Fraternal Centers

Facility Name	Address	Zip Code
CHAMBER OF COMMERCE - PONTE VEDRA BEACH	115 PROFESSIONAL DR	32082
AMERICAN LEGION POST 233	560 N WILDERNESS TRL	32082
PLAYERS COMMUNITY SENIOR CENTER	175 LANDRUM LN	32082
YMCA - WINSTON FAMILY CENTER	170 LANDRUM LN	32082

### Cultural Centers

Facility Name	Address	Zip Code
BETHEL GALLERY	4510 PALM VALLEY RD	32082
STELLERS GALLERY- PONTE VEDRA BEACH GALLERY	240 A1A N	32082
PONTE VEDRA BEACH BRANCH LIBRARY	101 LIBRARY BLVD	32082
THE PONTE VEDRA CONCERT HALL	1050 A1A N	32082

### Fire Department and Rescue Station Facilities

Facility Name	Address	Zip Code
ST JOHNS COUNTY FIRE DEPARTMENT AND RESCUE STATION 10 (PONTE VEDRA)	155 LIBRARY BLVD	32082
ST JOHNS COUNTY FIRE DEPARTMENT AND RESCUE STATION 1 (PALM VALLEY)	130 CANAL BLVD	32082

### Government Buildings

Facility Name	Address	Zip Code
ST JOHNS COUNTY PROPERTY APPRAISER	5430 PALM VALLEY RD	32082
U S POST OFFICE - PONTE VEDRA BEACH	130 CORRIDOR RD	32082
ST JOHNS COUNTY TAX COLLECTOR - DUPONT CENTER	5430 PALM VALLEY RD	32082

### Law Enforcement Facilities

Facility Name	Address	Zip Code
ST JOHNS COUNTY SHERIFF'S OFFICE - PONTE VEDRA ANNEX	5430 PALM VALLEY RD	32082

### Florida Parks and Recreational Facilities

Facility Name	Address	Zip Code
LANDRUM SCHOOL FIELDS	230 LANDRUM LN	32082
DELEON SHORES PARK	9 DOLPHIN BLVD E	32082
BIRD ISLAND PARK	101 LIBRARY BLVD	32082
CORNERSTONE PARK	1046 A1A N	32082

## Religious Centers

Facility Name	Address	Zip Code
FAMILY BIBLE CHURCH	4760 PALM VALLEY ROAD	32082
PONTE VEDRA UNITED METHODIST CHURCH	76 S ROSCOE BOULEVARD	32082
PONTE VEDRA PRESBYTERIAN CHURCH	4510 PALM VALLEY ROAD	32082
LORD OF LIFE LUTHERAN CHURCH	276 ROSCOE BOULEVARD NORTH	32082
CHRIST THE REDEEMER CHURCH	190 S ROSCOE BOULEVARD	32082
BETH EL THE BEACHES SYNAGOGUE	288 NORTH ROSCOE BOULEVARD	32082
JEHOVAH'S WITNESSES KINGDOM	6 ROSCOE BOULEVARD NORTH	32082
PALM VALLEY BAPTIST CHURCH	4890 PALM VALLEY ROAD	32082

## Public Schools

Facility Name	Address	Zip Code
OCEAN PALMS ELEMENTARY SCHOOL	355 LANDRUM LN	32082
ALICE B. LANDRUM MIDDLE SCHOOL	230 LANDRUM LN	32082
PONTE VEDRA PALM VALLEY- RAWLINGS ELEMENTARY SCHOOL	610 US HIGHWAY A1A N	32082

## Veteran Organizations and Facilities

Facility Name	Address	Zip Code
AMERICAN LEGION POST 233	560 N. WILDERNESS TRAIL	32082

## Group Care Facilities

Facility Name	Address	Zip Code
OCEAN PALMS ELEMENTARY SCHOOL	355 LANDRUM LANE	32082
PV/PV RAWLINGS ELEMENTARY SCHOOL	630 A1A N	32082
PALMER CATHOLIC ACADEMY	4889 PALM VALLEY ROAD	32082
THE STRATFORD	1004 VICAR'S WOODS ROAD	32082
LANDRUM MIDDLE SCHOOL	230 LANDRUM LANE	32082
ARBOR TERRACE PONTE VEDRA	5125 PALM VALLEY ROAD	32082
THE PALMS AT PONTE VEDRA	405 SOLANA ROAD	32082
THE BOLLES SCHOOL	200 ATP TOUR BOULEVARD	32082

## Block Groups

The following Census Block Groups were used to calculate demographics for this report.

### 1990 Census Block Groups

121090207003, 121090207001, 121090207005, 121090207002, 121090206001

### 2000 Census Block Groups

121090207032, 121090207022, 121090207021, 121090206003, 121090207011, 121090206001, 120310142011

### 2010 Census Block Groups

121090207051, 121090207042, 120310142034, 121090207072, 121090207073, 121090207053, 121090207041, 121090207061, 121090207054, 120310142033, 121090207081, 121090206012, 121090207071, 121090207112, 121090207052

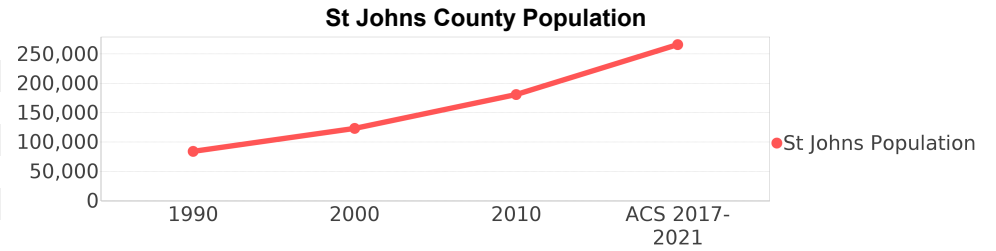
### Census Block Groups

121090207051, 121090207053, 121090207062, 121090207054, 121090207052, 121090207041, 121090207042, 121090206042, 120310142034, 121090207073, 121090207071, 121090207072, 121090207061, 121090207133, 120310142033, 121090207081, 121090207082, 121090207132

# St Johns County Demographic Profile

## General Population Trends - St Johns <sup>5</sup>

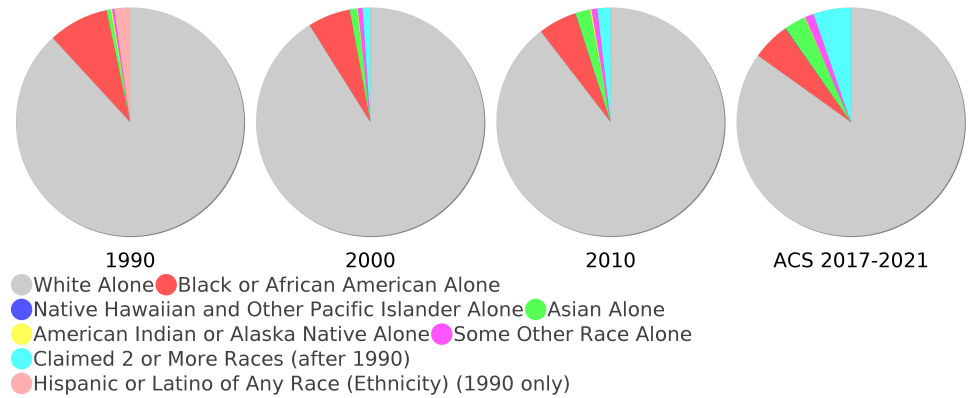
Description	1990	2000	2010 <sup>1</sup>	ACS 2017-2021
Total Population	83,829	123,135	180,624	265,724
Total Households	33,426	49,614	70,324	95,640
Average Persons per Acre	0.197	0.29	0.425	0.63
Average Persons per Household	2.508	2.437	3.00	2.75
Average Persons per Family	2.951	2.96	3.113	3.24
Males	40,665	60,077	88,035	130,037



## Race and Ethnicity Trends - St Johns <sup>5, 8, 9</sup>

Description	1990	2000	2010 <sup>1</sup>	ACS 2017-2021
White Alone	75,547 (90.12%)	112,131 (91.06%)	161,720 (89.53%)	225,524 (84.87%)
Black or African American Alone	7,328 (8.74%)	7,414 (6.02%)	9,829 (5.44%)	14,216 (5.35%)
Native Hawaiian and Other Pacific Islander Alone	(NA)	14 (0.01%)	52 (0.03%)	179 (0.07%)
Asian Alone	491 (0.59%)	1,244 (1.01%)	3,782 (2.09%)	8,050 (3.03%)
American Indian or Alaska Native Alone	182 (0.22%)	170 (0.14%)	388 (0.21%)	358 (0.13%)
Some Other Race Alone	263 (0.31%)	822 (0.67%)	1,482 (0.82%)	3,250 (1.22%)
Claimed 2 or More Races	(NA)	1,340 (1.09%)	3,371 (1.87%)	14,147 (5.32%)
Hispanic or Latino of Any Race (Ethnicity)	1,902 (2.27%)	3,596 (2.92%)	8,797 (4.87%)	20,288 (7.63%)
Not Hispanic or Latino (Ethnicity)	81,927 (97.73%)	119,539 (97.08%)	171,827 (95.13%)	245,436 (92.37%)
Minority (Race and Ethnicity)	9,837 (11.73%)	13,589 (11.04%)	27,845 (15.42%)	50,669 (19.07%)

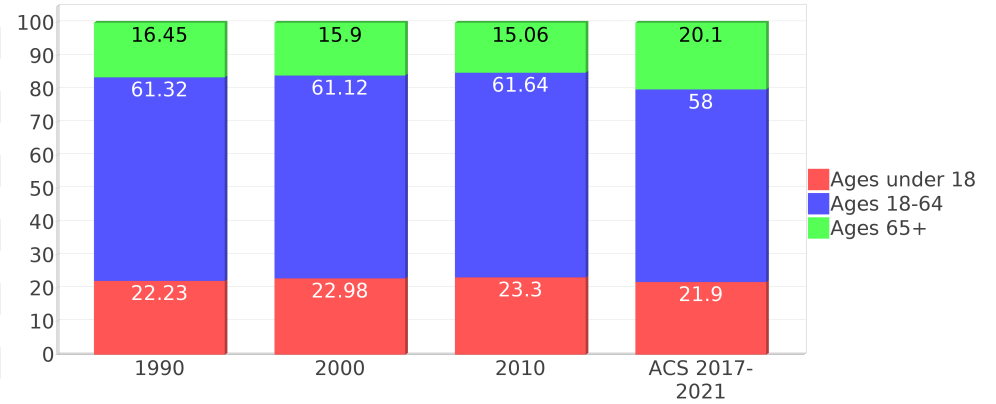
## St Johns County Race



## Age Trends - St Johns <sup>5</sup>

Description	1990	2000	2010 <sup>1</sup>	ACS 2017-2021
Under Age 5	6.36%	5.22%	5.45%	4.85%
Ages 5-17	15.86%	17.76%	17.85%	17.05%
Ages 18-21	5.54%	4.36%	5.10%	4.34%
Ages 22-29	10.88%	7.57%	7.33%	6.85%
Ages 30-39	16.30%	13.63%	11.56%	11.78%
Ages 40-49	13.37%	17.41%	16.14%	13.71%
Ages 50-64	15.24%	18.15%	21.51%	21.31%
Age 65 and Over	16.45%	15.90%	15.06%	20.10%
-Ages 65-74	10.38%	8.90%	8.19%	12.50%
-Ages 75-84	4.67%	5.29%	4.98%	5.52%
-Age 85 and Over	1.40%	1.71%	1.88%	2.08%
Median Age	NA	41	42	43.8

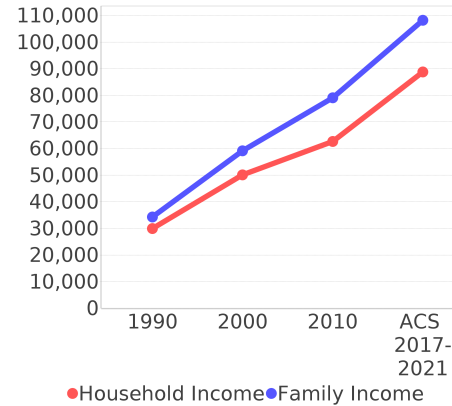
Percentage Population by Age Group - St Johns



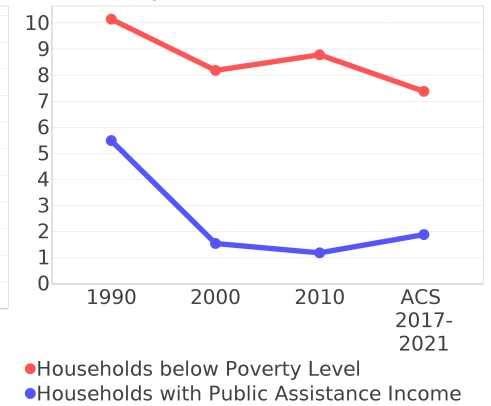
## Income Trends - St Johns <sup>5</sup>

Description	1990	2000	2010 <sup>1</sup>	ACS 2017-2021
Median Household Income	\$29,926	\$50,099	\$62,663	\$88,794
Median Family Income	\$34,266	\$59,153	\$79,080	\$108,205
Population below Poverty Level	10.34%	8.02%	9.06%	7.65%
Households below Poverty Level	10.15%	8.18%	8.78%	7.38%
Households with Public Assistance Income	5.49%	1.54%	1.18%	1.88%

Income Trends



Poverty and Public Assistance



## Disability Trends - St Johns <sup>10</sup>

See the Data Sources section below for an explanation about the differences in disability data among the various years.

Description	1990	2000	2010 <sup>1</sup>	ACS 2017-2021
Population 16 To 64 Years with a disability	4,640 (7.06%)	14,254 (12.39%)	NA (NA)	NA (NA)
Population 20 To 64 Years with a disability	NA (NA)	NA (NA)	NA (NA)	12,271 (8.32%)

## Educational Attainment Trends - St Johns <sup>11, 5</sup>

Age 25 and Over

Description	1990	2000	2010 <sup>1</sup>	ACS 2017-2021
Less than 9th Grade	4,022 (6.97%)	2,865 (3.32%)	2,634 (2.11%)	3,099 (1.64%)
9th to 12th Grade, No Diploma	7,567 (13.12%)	8,172 (9.48%)	6,321 (5.07%)	6,924 (3.66%)
High School Graduate or Higher	46,107 (79.91%)	75,162 (87.20%)	115,646 (92.81%)	179,083 (94.70%)
Bachelor's Degree or Higher	13,644 (23.65%)	28,560 (33.13%)	48,205 (38.69%)	86,951 (45.98%)

## Language Trends - St Johns <sup>5</sup>

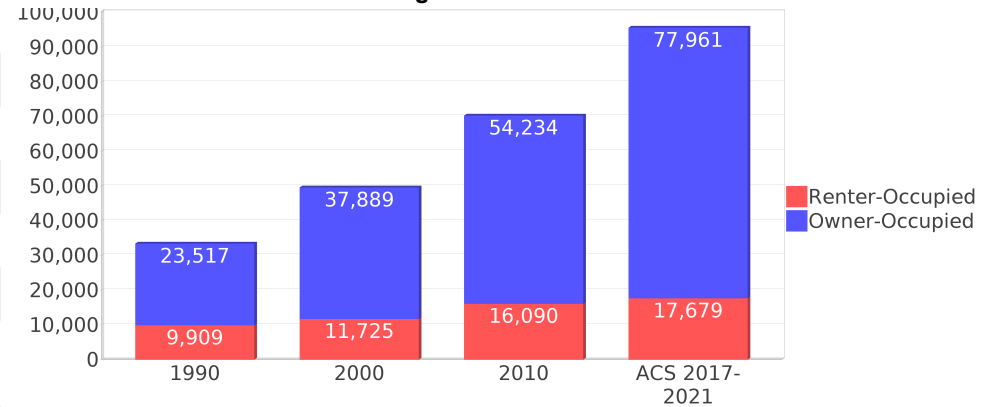
Age 5 and Over

Description	1990	2000	2010 <sup>1</sup>	ACS 2017-2021
Speaks English Well	807 (1.03%)	1,217 (1.04%)	2,786 (1.63%)	4,336 (1.72%)
Speaks English Not Well	NA (NA)	581 (0.50%)	853 (0.50%)	2,172 (0.86%)
Speaks English Not at All	NA (NA)	175 (0.15%)	364 (0.21%)	377 (0.15%)
Speaks English Not Well or Not at All	527 (0.67%)	756 (0.65%)	1,217 (0.71%)	2,549 (1.01%)
Speaks English Less than Very Well	NA (NA)	1,973 (1.69%)	4,003 (2.34%)	6,885 (2.72%)

## Housing Trends - St Johns <sup>5</sup>

Description	1990	2000	2010 <sup>1</sup>	ACS 2017-2021
Total	40,712	58,008	86,673	115,442
Units per Acre	0.096	0.137	0.204	0.27
Single-Family Units	21,331	37,962	61,286	87,339
Multi-Family Units	6,004	12,074	17,318	20,629
Mobile Home Units	5,765	7,688	7,857	7,424
Owner-Occupied Units	23,517	37,889	54,234	77,961
Renter-Occupied Units	9,909	11,725	16,090	17,679
Vacant Units	7,286	8,394	16,349	19,802
Median Housing Value	\$84,500	\$140,700	\$294,100	\$348,100
Occupied Housing Units w/No Vehicle	2,263 (6.77%)	2,074 (4.18%)	2,748 (3.91%)	2,200 (2.30%)
Median year householder moved into unit - Total	NA	NA	NA	2014
Median year householder moved into unit - Owner Occupied	NA	NA	NA	2012
Median year householder moved into unit - Renter Occupied	NA	NA	NA	2017
Abroad 1 year ago	NA	NA	NA	1,603
Different house in United States 1 year ago	NA	NA	NA	42,711
Same house 1 year ago	NA	NA	NA	219,034
Geographical Mobility in the Past Year - Total	NA	NA	NA	219,034

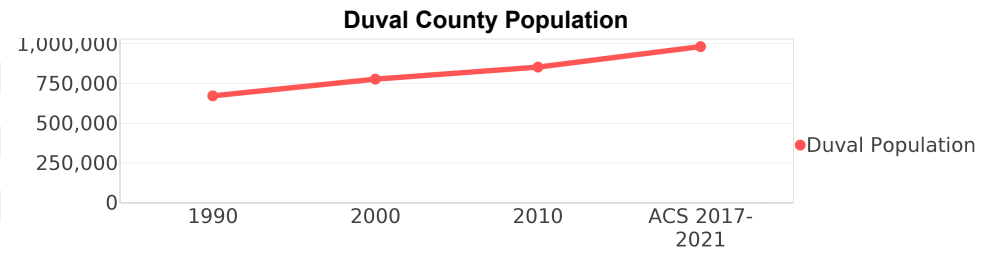
## Housing Tenure - St Johns



# Duval County Demographic Profile

## General Population Trends - Duval <sup>5</sup>

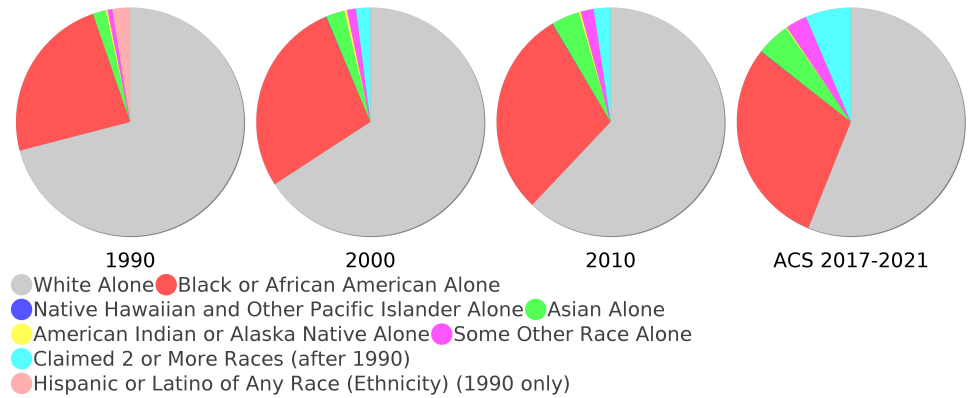
Description	1990	2000	2010 <sup>1</sup>	ACS 2017-2021
Total Population	672,971	778,879	854,848	983,153
Total Households	257,245	303,747	330,276	387,008
Average Persons per Acre	1.246	1.429	1.568	1.80
Average Persons per Household	2.616	2.511	3.00	2.49
Average Persons per Family	3.156	3.138	3.278	3.28
Males	328,737	378,040	414,413	478,773



## Race and Ethnicity Trends - Duval <sup>5, 8, 9</sup>

Description	1990	2000	2010 <sup>1</sup>	ACS 2017-2021
White Alone	489,604 (72.75%)	512,659 (65.82%)	530,593 (62.07%)	551,519 (56.10%)
Black or African American Alone	163,902 (24.35%)	216,517 (27.80%)	250,792 (29.34%)	289,401 (29.44%)
Native Hawaiian and Other Pacific Islander Alone	(NA)	507 (0.07%)	697 (0.08%)	666 (0.07%)
Asian Alone	12,613 (1.87%)	20,554 (2.64%)	34,173 (4.00%)	46,547 (4.73%)
American Indian or Alaska Native Alone	1,904 (0.28%)	2,995 (0.38%)	2,532 (0.30%)	1,875 (0.19%)
Some Other Race Alone	4,621 (0.69%)	9,777 (1.26%)	15,633 (1.83%)	29,654 (3.02%)
Claimed 2 or More Races	(NA)	15,870 (2.04%)	20,428 (2.39%)	63,491 (6.46%)
Hispanic or Latino of Any Race (Ethnicity)	17,333 (2.58%)	31,809 (4.08%)	60,227 (7.05%)	104,543 (10.63%)
Not Hispanic or Latino (Ethnicity)	655,638 (97.42%)	747,070 (95.92%)	794,621 (92.95%)	878,610 (89.37%)
Minority (Race and Ethnicity)	193,990 (28.83%)	283,868 (36.45%)	375,437 (43.92%)	483,256 (49.15%)

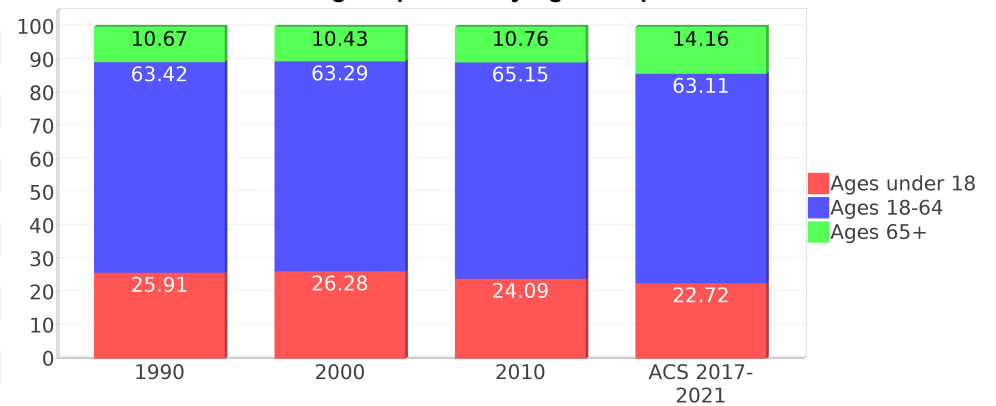
## Duval County Race



## Age Trends - Duval <sup>5</sup>

Description	1990	2000	2010 <sup>1</sup>	ACS 2017-2021
Under Age 5	8.09%	7.15%	6.98%	6.62%
Ages 5-17	17.82%	19.13%	17.11%	16.10%
Ages 18-21	6.26%	5.48%	5.91%	4.90%
Ages 22-29	14.95%	11.64%	12.62%	12.06%
Ages 30-39	17.73%	16.60%	13.80%	14.77%
Ages 40-49	12.33%	15.62%	14.89%	12.30%
Ages 50-64	12.17%	13.95%	17.94%	19.08%
Age 65 and Over	10.67%	10.43%	10.76%	14.16%
-Ages 65-74	6.49%	5.69%	5.80%	8.83%
-Ages 75-84	3.27%	3.62%	3.63%	3.77%
-Age 85 and Over	0.91%	1.11%	1.33%	1.57%
Median Age	NA	34	35	36.5

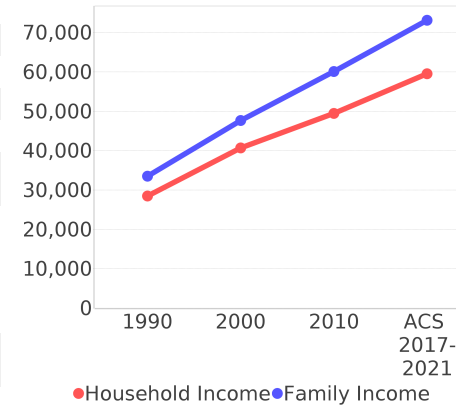
Percentage Population by Age Group - Duval



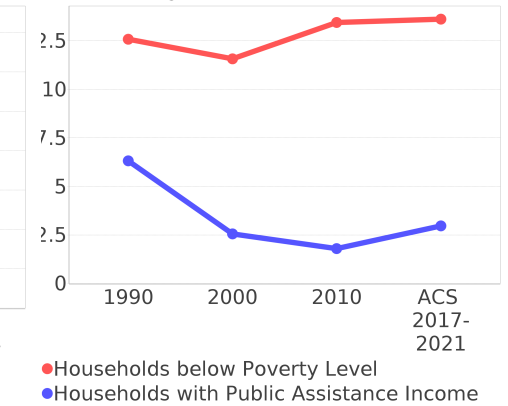
## Income Trends - Duval <sup>5</sup>

Description	1990	2000	2010 <sup>1</sup>	ACS 2017-2021
Median Household Income	\$28,513	\$40,703	\$49,463	\$59,541
Median Family Income	\$33,548	\$47,689	\$60,114	\$73,133
Population below Poverty Level	12.81%	11.91%	14.19%	14.46%
Households below Poverty Level	12.58%	11.57%	13.45%	13.62%
Households with Public Assistance Income	6.32%	2.56%	1.80%	2.97%

Income Trends



Poverty and Public Assistance



## Disability Trends - Duval <sup>10</sup>

See the Data Sources section below for an explanation about the differences in disability data among the various years.

Description	1990	2000	2010 <sup>1</sup>	ACS 2017-2021
Population 16 To 64 Years with a disability	37,634 (7.78%)	105,681 (15.08%)	NA (NA)	NA (NA)
Population 20 To 64 Years with a disability	NA (NA)	NA (NA)	NA (NA)	64,487 (10.99%)

## Educational Attainment Trends - Duval <sup>11, 5</sup>

Age 25 and Over

Description	1990	2000	2010 <sup>1</sup>	ACS 2017-2021
Less than 9th Grade	30,801 (7.26%)	21,669 (4.34%)	21,096 (3.78%)	20,229 (3.00%)
9th to 12th Grade, No Diploma	67,261 (15.86%)	64,667 (12.94%)	50,443 (9.03%)	43,844 (6.50%)
High School Graduate or Higher	325,978 (76.87%)	413,266 (82.72%)	487,204 (87.20%)	610,351 (90.50%)
Bachelor's Degree or Higher	77,986 (18.39%)	109,473 (21.91%)	139,017 (24.88%)	212,489 (31.51%)

## Language Trends - Duval <sup>5</sup>

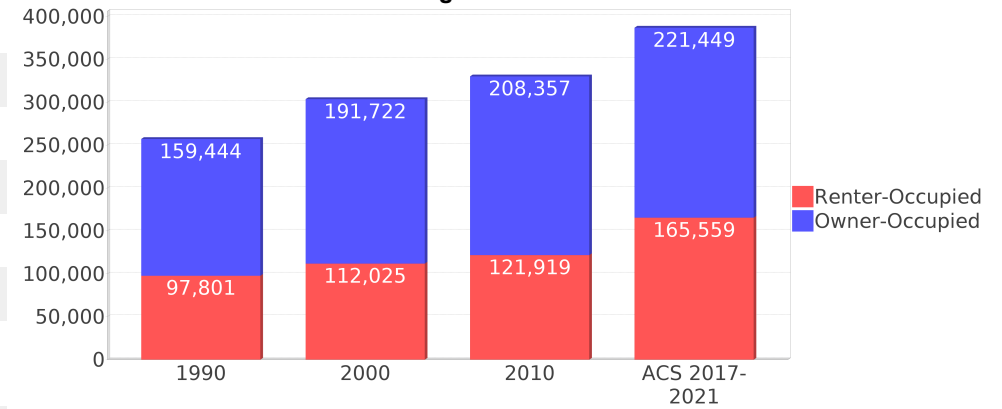
Age 5 and Over

Description	1990	2000	2010 <sup>1</sup>	ACS 2017-2021
Speaks English Well	8,207 (1.33%)	14,191 (1.96%)	21,474 (2.70%)	29,675 (3.23%)
Speaks English Not Well	NA (NA)	8,478 (1.17%)	13,337 (1.68%)	18,951 (2.06%)
Speaks English Not at All	NA (NA)	1,443 (0.20%)	4,591 (0.58%)	5,737 (0.62%)
Speaks English Not Well or Not at All	4,260 (0.69%)	9,921 (1.37%)	17,928 (2.25%)	24,688 (2.69%)
Speaks English Less than Very Well	NA (NA)	24,112 (3.33%)	39,402 (4.95%)	54,363 (5.92%)

## Housing Trends - Duval <sup>5</sup>

Description	1990	2000	2010 <sup>1</sup>	ACS 2017-2021
Total	284,673	329,778	383,560	429,495
Units per Acre	0.527	0.605	0.703	0.79
Single-Family Units	167,184	215,737	253,643	280,754
Multi-Family Units	68,091	91,304	109,007	130,286
Mobile Home Units	19,729	22,485	20,633	18,137
Owner-Occupied Units	159,444	191,722	208,357	221,449
Renter-Occupied Units	97,801	112,025	121,919	165,559
Vacant Units	27,428	26,031	53,284	42,487
Median Housing Value	\$63,400	\$86,100	\$175,900	\$211,200
Occupied Housing Units w/No Vehicle	28,091 (10.92%)	27,648 (9.10%)	25,351 (7.68%)	28,516 (7.37%)
Median year householder moved into unit - Total	NA	NA	NA	2015
Median year householder moved into unit - Owner Occupied	NA	NA	NA	2008
Median year householder moved into unit - Renter Occupied	NA	NA	NA	2017
Abroad 1 year ago	NA	NA	NA	4,999
Different house in United States 1 year ago	NA	NA	NA	161,926
Same house 1 year ago	NA	NA	NA	802,305
Geographical Mobility in the Past Year - Total	NA	NA	NA	802,305

## Housing Tenure - Duval



# Data Sources

## ACS vs Census Data

(1) The 2010 Census data is represented by a combination of decennial and ACS (2006-2010) data. The General Population Trends, Race and Ethnicity Trends, Age Trends are entirely from decennial. The Income Trends, Language Trends are entirely from the ACS. The Housing Trends section is derived from both: Decennial (Total # Housing Units, Housing Units per Acre, Owner-Occupied Units, Renter-Occupied Units, Vacant Units); ACS (Single Family Units, Multi-family Units, Mobile Homes, Median Housing Value, Occupied Housing Units w/No Vehicle).

## Area

(2) The geographic area of the community based on a user-defined community boundary or area of interest (AOI) boundary.

## Jurisdiction

(3) Jurisdiction(s) includes local government boundaries that intersect the user-defined community or AOI boundary.

## Goals, Values and History

(4) Information under the headings Goals and Values and History is entered manually by the user before the Sociocultural Data Report (SDR) is generated. This information is usually not available for communities with boundaries that are based on Census-defined places (i.e., not user-specified).

## Demographic Data

(5) Demographic data reported under the headings General Population Trends, Race and Ethnicity Trends, Age Trends, Income Trends, Educational Attainment Trends, Language Trends, and Housing Trends is from the U.S. Decennial Census for 1990 and 2000 and the American Community Survey (ACS) 5-year estimates for 2006-2010 and ACS 2017-2021. The data was gathered at the block group level for user-defined communities, Census places, and AOIs, and at the county level for counties. Depending on the dataset, the data represents 100% counts (Census Summary File 1) or sample-based information (Census Summary File 3 or ACS). For more information about using demographic data, please see the training videos located here: <https://www.fdot.gov/environment/pubs/sce/sce1.shtm>.

## About the Census Data

(6) The block group analysis for ETDM project analysis areas, user-defined communities, Census places, and AOI boundaries do not always correspond precisely to block group boundaries. To estimate the actual population more accurately, the SDR analysis adjusts the geographic area and data of affected block groups using the following methodology:

Delete overlapping census blocks with extremely low populations (2 or fewer people)  
Remove the portion of the block group that lies outside of the analysis area  
Recalculate the demographics assuming an equal area distribution of the population

Note that there may be areas where there is no population.

(7) Use caution when comparing the 100% count data (Decennial Census) to the sample-based data (ACS). In any given year, about one in 40 U.S. households will receive the ACS questionnaire. Over any five-year period, about one in eight households will receive the questionnaire, as compared to about one in six that received the long form questionnaire for the Decennial Census 2000. (Source: [https://www.census.gov/content/dam/Census/programs-surveys/acs/news/10ACS\\_keyfacts.pdf](https://www.census.gov/content/dam/Census/programs-surveys/acs/news/10ACS_keyfacts.pdf)) The U.S. Census Bureau provides help with this process: <https://www.census.gov/programs-surveys/acs/guidance/comparing-acs-data.html>

(8) Race and ethnicity are separate questions on the Census questionnaire. Individuals can report multiple race and ethnicity answers; therefore, numbers in the Race and Ethnicity portion of this report may add up to be greater than the total population. In addition, use caution when interpreting changes in race and ethnicity over time. Starting with the 2000 Decennial Census, respondents could select one or more race categories. Also in 2000, the placement of the question about Hispanic origin changed, helping to increase responsiveness to the Hispanic-origin question. Because of these and other changes, the 1990 data on race and ethnicity are not directly comparable with data from later censuses. (Source: <https://www.census.gov/library/publications/2001/dec/c2kbr01-01.html>)

(9) The "Minority" calculations use both the race and ethnicity responses from Census and ACS data. In this report, "Minority" refers to individuals who list a race other than White and/or list their ethnicity as Hispanic/Latino. In other words, people who are multi-racial, any single race other than White, or Hispanic/Latino of any race are considered minorities. We use the following formula:  $MINORITY = TOTALPOP - WHITE\_NH$  where TOTALPOP is the Total Population and WHITE\_NH is the population with a race of White alone and an ethnicity of Not Hispanic or Latino. Translating this to the field names used in the census ACS source data, the formula looks like this:  $MINORITY = B01003\_E001 - B03002\_E003$ . (Note, the WHITE\_NH population is not reported separately in this report.)

(10) Disability data is not included in the 2010 Decennial Census or the 2006-2010 ACS. This data is available in the ACS 2017-2021 ACS. Because of changes made to the Census and ACS questions between 1990 and ACS, disability variables should not be compared from year to year. For example: 1) with the 1990 data, the disabilities are listed as a "work disability" while this distinction is not made with 2000 or ACS data; 2) the ACS data includes the institutionalized population (e.g. persons in prisons and group homes) while this population is not included in 1990 or 2000; and 3) the age groupings changed over the years.

(11) The category Bachelor's Degree or Higher under the heading Educational Attainment Trends is a subset of the category High School Graduate or Higher.

(12) Income of households. This includes the income of the householder and all other individuals 15 years old and over in the household, whether they are related to the householder or not. Because many households consist of only one person, average household income is usually less than average family income.

(13) Income of families. In compiling statistics on family income, the incomes of all members 15 years old and over related to the householder are summed and treated as a single amount.

(14) Age trends. The median age for 1990 is not available.

## Land Use Data

(15) The Land Use information Indicates acreages and percentages for the generalized land use types used to group parcel-specific, existing land use assigned by the county property appraiser office according to the Florida Department of Revenue land use codes.

## Community Facilities Data

- (16) Assisted Rental Housing Units - Identifies multifamily rental developments that receive funding assistance under federal, state, and local government programs to offer affordable housing as reported by the Shimberg Center for Housing Studies, University of Florida.
- (17) Mobile Home Parks - Identifies approved or acknowledged mobile home parks reported by the Florida Department of Business and Professional Regulation and Florida Department of Health.
- (18) Migrant Camps - Identifies migrant labor camp facilities inspected by the Florida Department of Health.
- (19) Group Care Facilities - Identifies group care facilities inspected by the Florida Department of Health.
- (20) Community Center and Fraternal Association Facilities - Identifies facilities reported by multiple sources.
- (21) Law Enforcement Correctional Facilities - Identifies facilities reported by multiple sources.
- (22) Cultural Centers - Identifies cultural centers including organizations, buildings, or complexes that promote culture and arts (e.g., aquariums and zoological facilities; arboreta and botanical gardens; dinner theaters; drive-ins; historical places and services; libraries; motion picture theaters; museums and art galleries; performing arts centers; performing arts theaters; planetariums; studios and art galleries; and theater producers stage facilities) reported by multiple sources.
- (23) Fire Department and Rescue Station Facilities - Identifies facilities reported by multiple sources.
- (24) Government Buildings - Identifies local, state, and federal government buildings reported by multiple sources.
- (25) Health Care Facilities - Identifies health care facilities including abortion clinics, dialysis clinics, medical doctors, nursing homes, osteopaths, state laboratories/clinics, and surgicenters/walk-in clinics reported by the Florida Department of Health.
- (26) Hospital Facilities - Identifies hospital facilities reported by multiple sources.
- (27) Law Enforcement Facilities - Identifies law enforcement facilities reported by multiple sources.
- (28) Parks and Recreational Facilities - Identifies parks and recreational facilities reported by multiple sources.
- (29) Religious Center Facilities - Identifies religious centers including churches, temples, synagogues, mosques, chapels, centers, and other types of religious facilities reported by multiple sources.
- (30) Private and Public Schools - Identifies private and public schools reported by multiple sources.
- (31) Social Service Centers - Identifies social service centers reported by multiple sources.
- (32) Veteran Organizations and Facilities

# County Data Sources

## ACS vs Census Data

(1) The 2010 Census data is represented by a combination of decennial and ACS (2006-2010) data. The General Population Trends, Race and Ethnicity Trends, Age Trends are entirely from decennial. The Income Trends, Language Trends are entirely from the ACS. The Housing Trends section is derived from both: Decennial (Total # Housing Units, Housing Units per Acre, Owner-Occupied Units, Renter-Occupied Units, Vacant Units); ACS (Single Family Units, Multi-family Units, Mobile Homes, Median Housing Value, Occupied Housing Units w/No Vehicle).

## About the Census Data

(34) Use caution when comparing the 100% count data (Decennial Census) to the sample-based data (ACS). In any given year, about one in 40 U.S. households will receive the ACS questionnaire. Over any five-year period, about one in eight households will receive the questionnaire, as compared to about one in six that received the long form questionnaire for the Decennial Census 2000. (Source: [https://www.census.gov/content/dam/Census/programs-surveys/acs/news/10ACS\\_keyfacts.pdf](https://www.census.gov/content/dam/Census/programs-surveys/acs/news/10ACS_keyfacts.pdf)) The U.S. Census Bureau provides help with this process: <https://www.census.gov/programs-surveys/acs/guidance/comparing-acs-data.html>

(35) Race and ethnicity are separate questions on the Census questionnaire. Individuals can report multiple race and ethnicity answers; therefore, numbers in the Race and Ethnicity portion of this report may add up to be greater than the total population. In addition, use caution when interpreting changes in race and ethnicity over time. Starting with the 2000 Decennial Census, respondents could select one or more race categories. Also in 2000, the placement of the question about Hispanic origin changed, helping to increase responsiveness to the Hispanic-origin question. Because of these and other changes, the 1990 data on race and ethnicity are not directly comparable with data from later censuses. (Source: <https://www.census.gov/library/publications/2001/dec/c2kbr01-01.html>)

(36) The "Minority" calculations use both the race and ethnicity responses from Census and ACS data. In this report, "Minority" refers to individuals who list a race other than White and/or list their ethnicity as Hispanic/Latino. In other words, people who are multi-racial, any single race other than White, or Hispanic/Latino of any race are considered minorities. We use the following formula:  $MINORITY = TOTALPOP - WHITE\_NH$  where TOTALPOP is the Total Population and WHITE\_NH is the population with a race of White alone and an ethnicity of Not Hispanic or Latino. Translating this to the field names used in the census ACS source data, the formula looks like this:  $MINORITY = B01003\_E001 - B03002\_E003$ . (Note, the WHITE\_NH population is not reported separately in this report.)

(37) Disability data is not included in the 2010 Decennial Census or the 2006-2010 ACS. This data is available in the ACS 2017-2021 ACS. Because of changes made to the Census and ACS questions between 1990 and ACS, disability variables should not be compared from year to year. For example: 1) with the 1990 data, the disabilities are listed as a "work disability" while this distinction is not made with 2000 or ACS data; 2) the ACS data includes the institutionalized population (e.g. persons in prisons and group homes) while this population is not included in 1990 or 2000; and 3) the age groupings changed over the years.

(38) The category Bachelor's Degree or Higher under the heading Educational Attainment Trends is a subset of the category High School Graduate or Higher.

## Metadata

- (39) Community and Fraternal Centers [https://etdmpub.florida-et.org/meta/gc\\_communitycenter.xml](https://etdmpub.florida-et.org/meta/gc_communitycenter.xml)
- (40) Correctional Facilities in Florida [https://etdmpub.florida-et.org/meta/gc\\_correctional.xml](https://etdmpub.florida-et.org/meta/gc_correctional.xml)
- (41) Cultural Centers in Florida [https://etdmpub.florida-et.org/meta/gc\\_culturecenter.xml](https://etdmpub.florida-et.org/meta/gc_culturecenter.xml)
- (42) Fire Department and Rescue Station Facilities in Florida [https://etdmpub.florida-et.org/meta/gc\\_firestat.xml](https://etdmpub.florida-et.org/meta/gc_firestat.xml)
- (43) Local, State, and Federal Government Buildings in Florida [https://etdmpub.florida-et.org/meta/gc\\_govbuild.xml](https://etdmpub.florida-et.org/meta/gc_govbuild.xml)
- (44) Florida Health Care Facilities [https://etdmpub.florida-et.org/meta/gc\\_health.xml](https://etdmpub.florida-et.org/meta/gc_health.xml)
- (45) Hospital Facilities in Florida [https://etdmpub.florida-et.org/meta/gc\\_hospitals.xml](https://etdmpub.florida-et.org/meta/gc_hospitals.xml)
- (46) Law Enforcement Facilities in Florida [https://etdmpub.florida-et.org/meta/gc\\_lawenforce.xml](https://etdmpub.florida-et.org/meta/gc_lawenforce.xml)
- (47) Florida Parks and Recreational Facilities [https://etdmpub.florida-et.org/meta/gc\\_parks.xml](https://etdmpub.florida-et.org/meta/gc_parks.xml)
- (48) Religious Centers [https://etdmpub.florida-et.org/meta/gc\\_religion.xml](https://etdmpub.florida-et.org/meta/gc_religion.xml)
- (49) Florida Public and Private Schools [https://etdmpub.florida-et.org/meta/gc\\_schools.xml](https://etdmpub.florida-et.org/meta/gc_schools.xml)
- (50) Social Service Centers [https://etdmpub.florida-et.org/meta/gc\\_socialservice.xml](https://etdmpub.florida-et.org/meta/gc_socialservice.xml)
- (51) Assisted Rental Housing Units in Florida [https://etdmpub.florida-et.org/meta/gc\\_assisted\\_housing.xml](https://etdmpub.florida-et.org/meta/gc_assisted_housing.xml)
- (52) Group Care Facilities <https://etdmpub.florida-et.org/meta/groupcare.xml>
- (53) Mobile Home Parks in Florida [https://etdmpub.florida-et.org/meta/gc\\_mobilehomes.xml](https://etdmpub.florida-et.org/meta/gc_mobilehomes.xml)
- (54) Migrant Camps in Florida <https://etdmpub.florida-et.org/meta/migrant.xml>
- (55) Veteran Organizations and Facilities [https://etdmpub.florida-et.org/meta/gc\\_veterans.xml](https://etdmpub.florida-et.org/meta/gc_veterans.xml)
- (56) Generalized Land Use [https://etdmpub.florida-et.org/meta/lu\\_gen.xml](https://etdmpub.florida-et.org/meta/lu_gen.xml)
- (57) Census Block Groups in Florida [https://etdmpub.florida-et.org/meta/e2\\_cenacs\\_cci.xml](https://etdmpub.florida-et.org/meta/e2_cenacs_cci.xml)
- (58) 1990 Census Block Groups in Florida [https://etdmpub.florida-et.org/meta/e2\\_cenblkgrp\\_1990\\_cci.xml](https://etdmpub.florida-et.org/meta/e2_cenblkgrp_1990_cci.xml)
- (59) 2000 Census Block Groups in Florida [https://etdmpub.florida-et.org/meta/e2\\_cenblkgrp\\_2000\\_cci.xml](https://etdmpub.florida-et.org/meta/e2_cenblkgrp_2000_cci.xml)
- (60) 2010 Census Block Groups in Florida [https://etdmpub.florida-et.org/meta/e2\\_cenblkgrp\\_2010\\_cci.xml](https://etdmpub.florida-et.org/meta/e2_cenblkgrp_2010_cci.xml)