

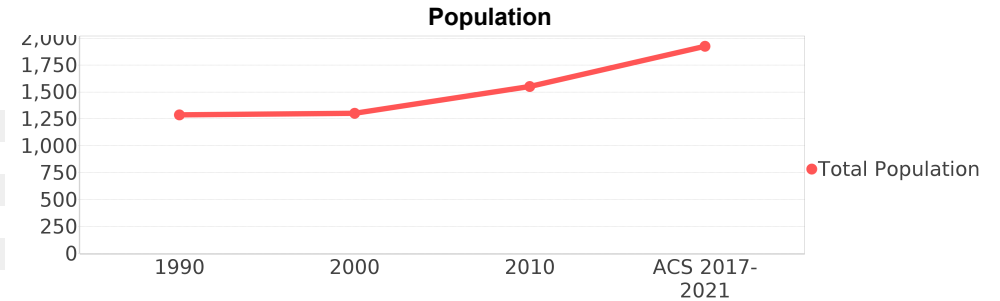
## Rainbow Lakes Estates (CDP)

**Area:** [2](#) 16.369 square miles  
**Jurisdiction - Cities:** [3](#) NA  
**Jurisdiction - Counties:** [3](#) Marion, Levy



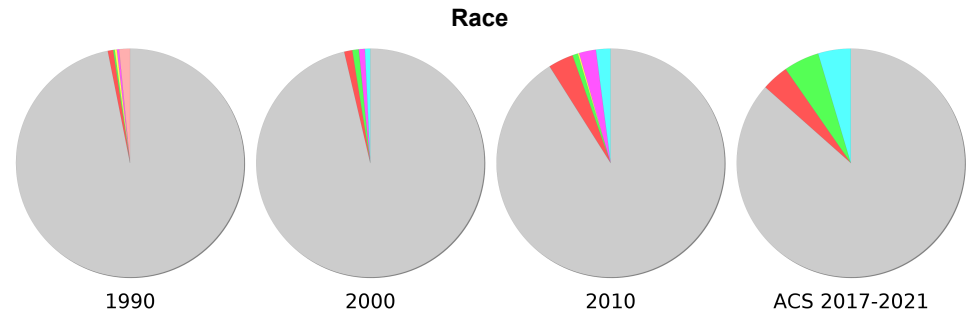
### General Population Trends

Description	1990	2000	2010 <sup>1</sup>	ACS 2017-2021
Total Population	1,287	1,302	1,551	1,925
Total Households	591	564	655	804
Average Persons per Acre	0.16	0.17	0.28	0.29
Average Persons per Household	2.50	2.40	2.32	2.26
Average Persons per Family	2.73	2.84	3.00	2.85
Males	623	600	748	878
Females	664	701	803	1,047



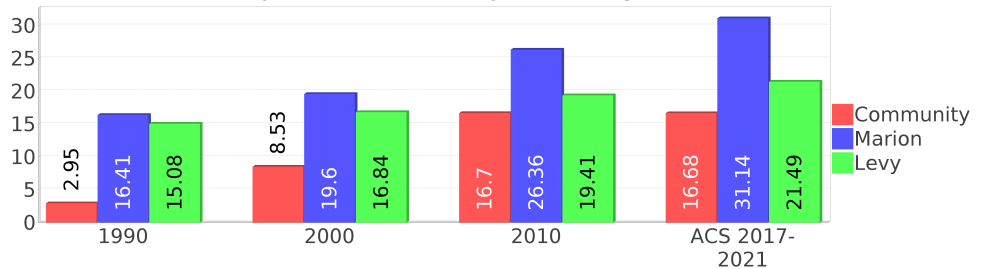
### Race and Ethnicity Trends <sup>5, 8, 9</sup>

Description	1990	2000	2010 <sup>1</sup>	ACS 2017-2021
White Alone	1,264 (98.21%)	1,253 (96.24%)	1,410 (90.91%)	1,663 (86.39%)
Black or African American Alone	10 (0.78%)	15 (1.15%)	55 (3.55%)	73 (3.79%)
Native Hawaiian and Other Pacific Islander Alone	0 (0.00%)	0 (0.00%)	0 (0.00%)	0 (0.00%)
Asian Alone	3 (0.23%)	12 (0.92%)	12 (0.77%)	97 (5.04%)
American Indian or Alaska Native Alone	4 (0.31%)	0 (0.00%)	3 (0.19%)	0 (0.00%)
Some Other Race Alone	4 (0.31%)	11 (0.84%)	37 (2.39%)	0 (0.00%)
Claimed 2 or More Races	NA (NA)	10 (0.77%)	32 (2.06%)	89 (4.62%)
Hispanic or Latino of Any Race (Ethnicity)	20 (1.55%)	73 (5.61%)	169 (10.90%)	61 (3.17%)
Not Hispanic or Latino (Ethnicity)	1,267 (98.45%)	1,229 (94.39%)	1,382 (89.10%)	1,864 (96.83%)
Minority (Race and Ethnicity)	38 (2.95%)	111 (8.53%)	259 (16.70%)	321 (16.68%)



● White Alone ● Black or African American Alone  
● Native Hawaiian and Other Pacific Islander Alone ● Asian Alone  
● American Indian or Alaska Native Alone ● Some Other Race Alone  
● Claimed 2 or More Races (after 1990)  
● Hispanic or Latino of Any Race (Ethnicity) (1990 only)

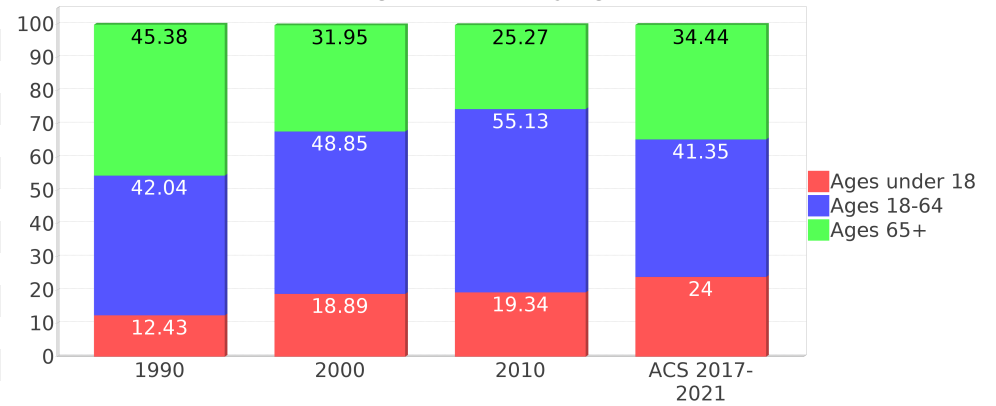
### Minority (Race and Ethnicity) Percentage Population



## Age Trends <sup>5</sup>

Description	1990	2000	2010 <sup>1</sup>	ACS 2017-2021
Under Age 5	3.19%	4.38%	5.35%	4.83%
Ages 5-17	9.25%	14.52%	13.99%	19.17%
Ages 18-21	2.10%	2.07%	3.68%	1.04%
Ages 22-29	5.36%	5.68%	7.29%	1.82%
Ages 30-39	8.00%	11.37%	8.51%	10.29%
Ages 40-49	7.93%	8.60%	12.38%	13.19%
Ages 50-64	18.65%	21.12%	23.28%	15.01%
Age 65 and Over	45.38%	31.95%	25.27%	34.44%
-Ages 65-74	29.68%	15.90%	14.31%	12.99%
-Ages 75-84	12.74%	13.06%	7.99%	19.69%
-Age 85 and Over	2.87%	2.92%	2.90%	1.66%
Median Age	NA	44	47	60

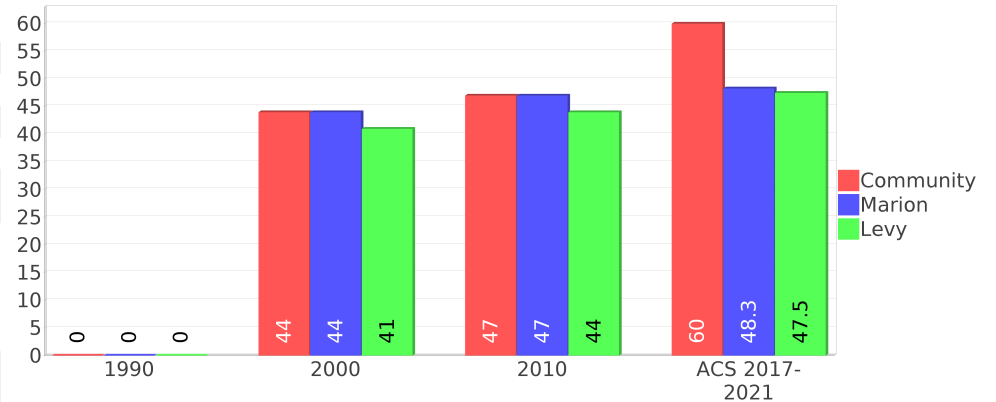
Percentage Population by Age Group



## Income Trends <sup>12, 13, 5</sup>

Description	1990	2000	2010 <sup>1</sup>	ACS 2017-2021
Median Household Income	\$18,289	\$31,044	\$40,791	\$44,036
Median Family Income	\$20,455	\$34,873	\$46,527	\$52,943
Population below Poverty Level	14.30%	7.99%	11.54%	8.16%
Households below Poverty Level	12.69%	8.16%	9.77%	10.07%
Households with Public Assistance Income	7.78%	2.84%	0.00%	4.10%

Median Age Comparison



## Disability Trends <sup>10</sup>

See the Data Sources section below for an explanation about the differences in disability data among the various years.

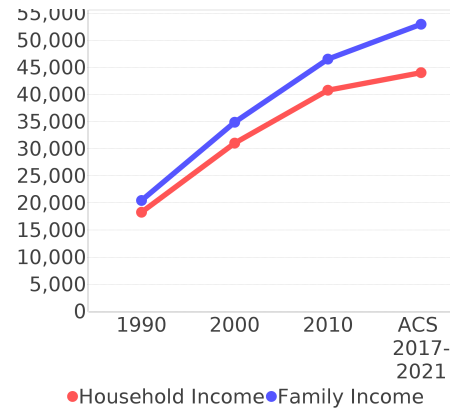
Description	1990	2000	2010 <sup>1</sup>	ACS 2017-2021
Population 16 To 64 Years with a disability	111 (9.82%)	171 (13.80%)	(NA)	(NA)
Population 20 To 64 Years with a disability	(NA)	(NA)	(NA)	106 (13.35%)

## Educational Attainment Trends <sup>11, 5</sup>

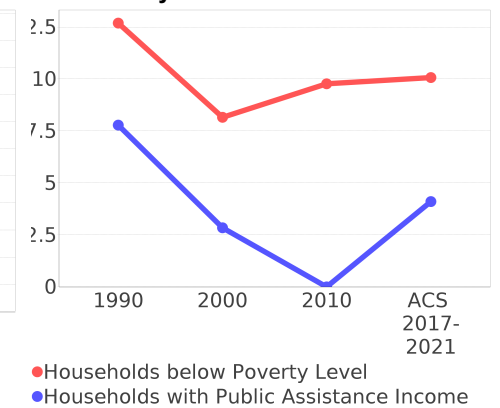
Age 25 and Over

Description	1990	2000	2010 <sup>1</sup>	ACS 2017-2021
Less than 9th Grade	125 (11.84%)	63 (6.24%)	76 (7.29%)	100 (6.99%)
9th to 12th Grade, No Diploma	281 (26.61%)	180 (17.82%)	118 (11.32%)	293 (20.49%)
High School Graduate or Higher	649 (61.46%)	766 (75.84%)	848 (81.38%)	1,036 (72.45%)
Bachelor's Degree or Higher	99 (9.38%)	85 (8.42%)	121 (11.61%)	215 (15.03%)

Income Trends



Poverty and Public Assistance



## Language Trends <sup>5</sup>

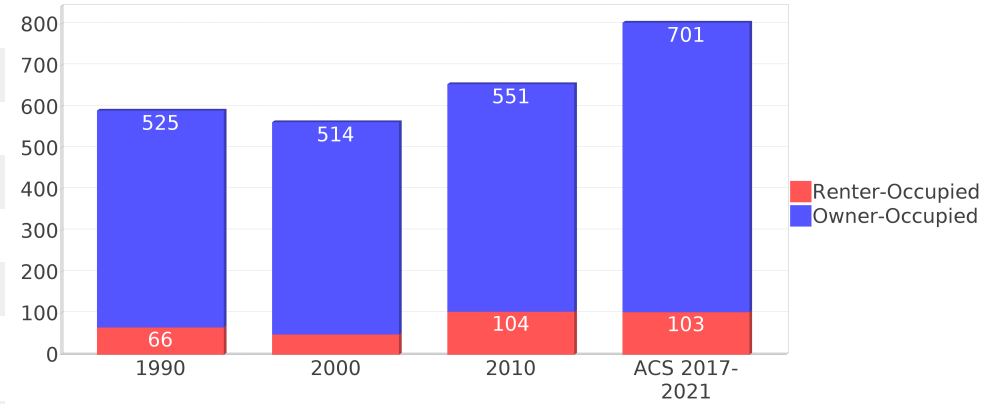
Age 5 and Over

Description	1990	2000	2010 <sup>1</sup>	ACS 2017-2021
Speaks English Well	12 (0.98%)	40 (3.22%)	31 (2.44%)	20 (1.09%)
Speaks English Not Well	NA (NA)	9 (0.72%)	13 (1.03%)	3 (0.16%)
Speaks English Not at All	NA (NA)	5 (0.40%)	0 (0.00%)	0 (0.00%)
Speaks English Not Well or Not at All	0 (0.00%)	14 (1.13%)	13 (1.03%)	3 (0.16%)
Speaks English Less than Very Well	NA (NA)	55 (4.42%)	45 (3.55%)	23 (1.26%)

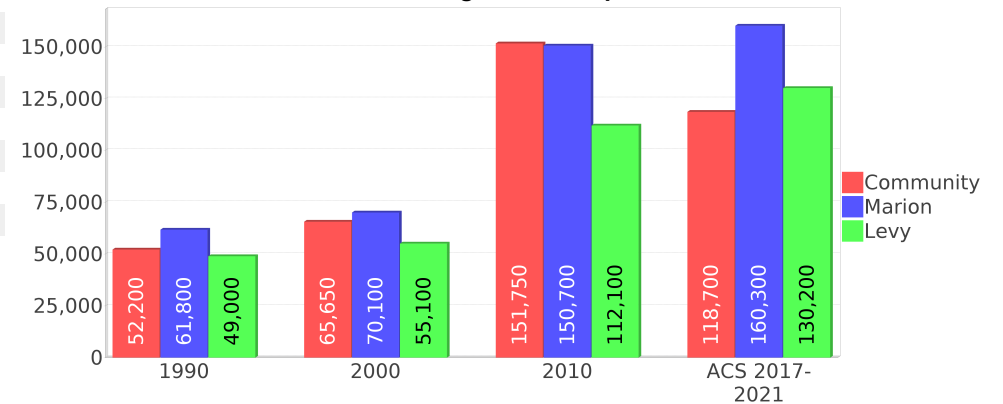
## Housing Trends <sup>5</sup>

Description	1990	2000	2010 <sup>1</sup>	ACS 2017-2021
Total	675	638	791	1,087
Units per Acre	0.11	0.09	0.10	0.14
Single-Family Units	582	613	717	1,048
Multi-Family Units	2	3	0	0
Mobile Home Units	6	20	42	31
Owner-Occupied Units	525	514	551	701
Renter-Occupied Units	66	49	104	103
Vacant Units	84	74	135	282
Median Housing Value	\$52,200	\$65,650	\$151,750	\$118,700
Occupied Housing Units w/No Vehicle	13 (2.20%)	0 (0.00%)	37 (5.64%)	0 (0.00%)

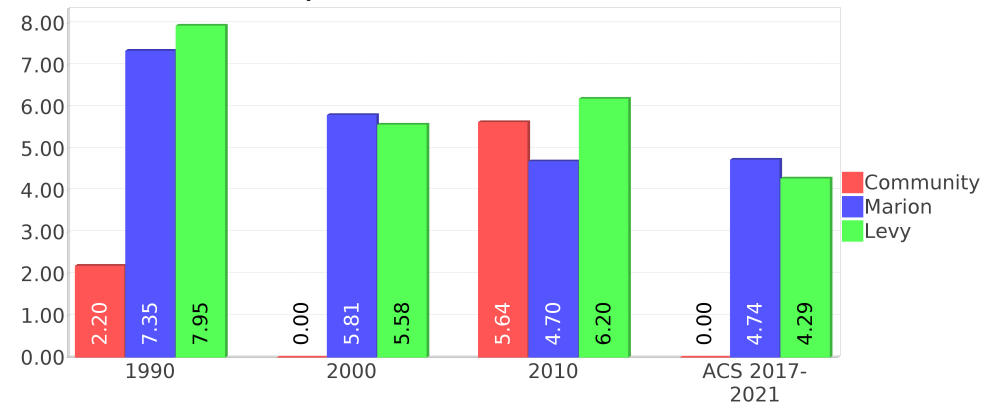
## Housing Tenure



## Median Housing Value Comparison



## Occupied Units With No Vehicles Available



## Geographic Mobility

Description	ACS 2017-2021
Median year householder moved into unit - Total	2005
Median year householder moved into unit - Owner Occupied	2004
Median year householder moved into unit - Renter Occupied	0
Abroad 1 year ago	0
Different house in United States 1 year ago	243
Same house 1 year ago	1,677
Geographical Mobility in the Past Year - Total	1,920

## Computers and Internet

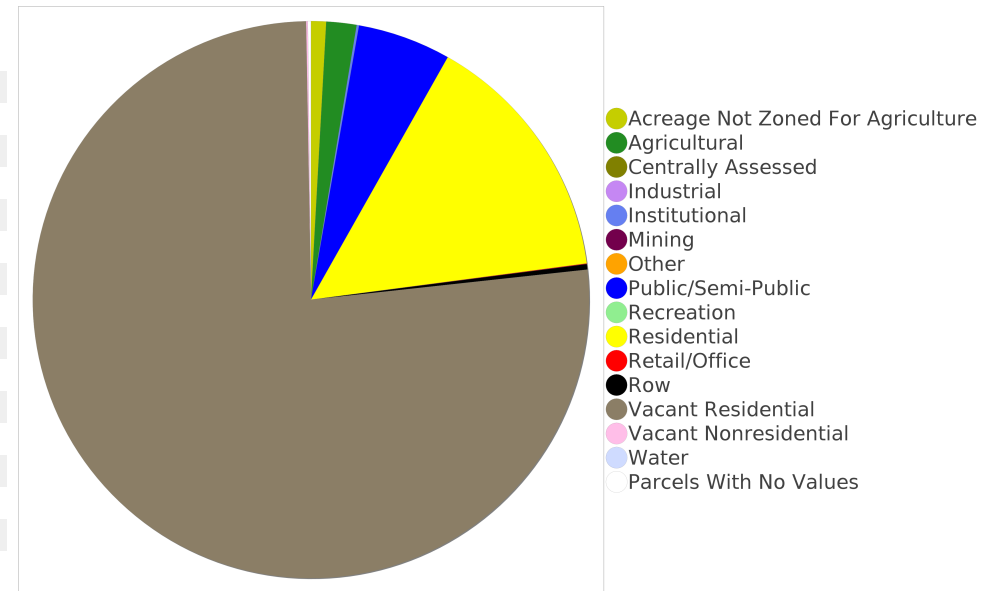
Description	ACS 2017-2021
Total Households Types of Computers in HH	804
Households with 1 or more device	608
Households with no computer	196
Total Households Presence and Types of Internet Subscriptions	804
Households with an internet subscription	569
Households with internet access without a subscription	0
Households with no internet access	234

## Household Languages

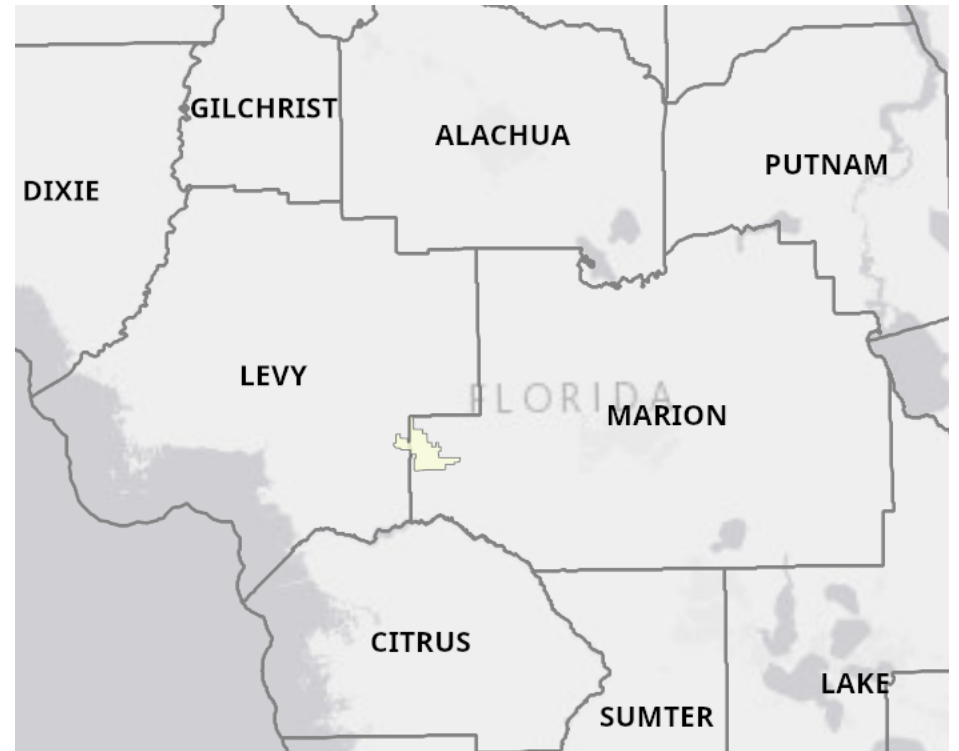
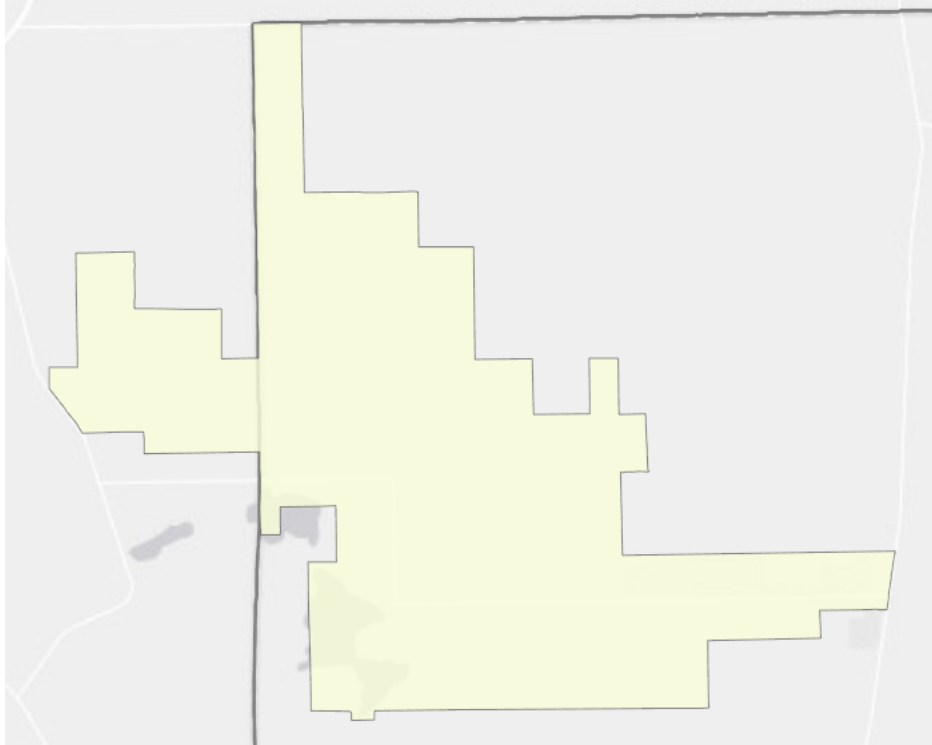
Description	ACS 2017-2021
Total Households by Household Language	804
Household Not Limited English Speaking Status	794
Spanish: Limited English speaking household	3
Indo-European languages: Limited English speaking household	0
Asian and Pacific Island languages: Limited English speaking household	7
Other languages: Limited English speaking household	0

## Existing Land Use <sup>15</sup>

Land Use Type	Acres	Percentage
Acreage Not Zoned For Agriculture	82	0.78%
Agricultural	165	1.58%
Centrally Assessed	0	0.00%
Industrial	0	0.00%
Institutional	13	0.12%
Mining	0	0.00%
Other	0	0.00%
Public/Semi-Public	509	4.86%
Recreation	0	0.00%
Residential	1,384	13.21%
Retail/Office	3	0.03%
Row	30	0.29%
Vacant Residential	7,181	68.55%
Vacant Nonresidential	9	0.09%
Water	0	0.00%
Parcels With No Values	17	0.16%



## Location Maps



## Community Facilities

The community facilities information below is useful in a variety of ways for environmental evaluations. These community resources should be evaluated for potential sociocultural effects, such as accessibility and relocation potential. The facility types may indicate the types of population groups present in the project study area. Facility staff and leaders can be sources of community information such as who uses the facility and how it is used. Additionally, community facilities are potential public meeting venues.

### Community and Fraternal Centers

Facility Name	Address	Zip Code
RAINBOW LAKES ESTATES MUNICIPAL COMMUNITY CENTER	4030 SW DEEPWATER CT	34431

### Cultural Centers

Facility Name	Address	Zip Code
HERMAN B OBERMAN PUBLIC LIBRARY	4040 DEEPWATER CT	34421

### Fire Department and Rescue Station Facilities

Facility Name	Address	Zip Code
MARION COUNTY FIRE DEPARTMENT STATION 14-1 (RAINBOW LAKES ESTATES)	3105 SW IVY PL	34431
MARION COUNTY FIRE DEPARTMENT STATION 14-2 (RAINBOW LAKES ESTATES)	24645 SW SHOREWOOD DR	34431

### Florida Parks and Recreational Facilities

Facility Name	Address	Zip Code
RAINBOW LAKES ESTATES - LITTLE BONABLE LAKE CANOE LAUNCH	WINDING HILLS ROAD	34431
RAINBOW LAKES ESTATES - TIGER LAKE BOAT RAMP	SW SHOREWOOD DR	34431
RAINBOW LAKE ESTATES COMMUNITY PARK	4020 SW DEEPWATER CT	34431

### Religious Centers

Facility Name	Address	Zip Code
CALVARY BAPTIST TEMPLE	21841 SW MARINE BOULEVARD	34431
RAINBOW LAKES UNITED METHODIST	19656 SW BEACH BOULEVARD	34431
FIRST BAPTIST CHURCH	19756 SW BEACH BOULEVARD	34431

## Block Groups

The following Census Block Groups were used to calculate demographics for this report.

### 1990 Census Block Groups

120830027011, 120830027014, 120830027013, 120830027015, 120830027012, 120759704004, 120830026012

### 2000 Census Block Groups

120830027012, 120830027011, 120759705001, 120759704003, 120830027013, 120830026012

### 2010 Census Block Groups

120759705004, 120830027011, 120830027012, 120759704003, 120830027013, 120830026013

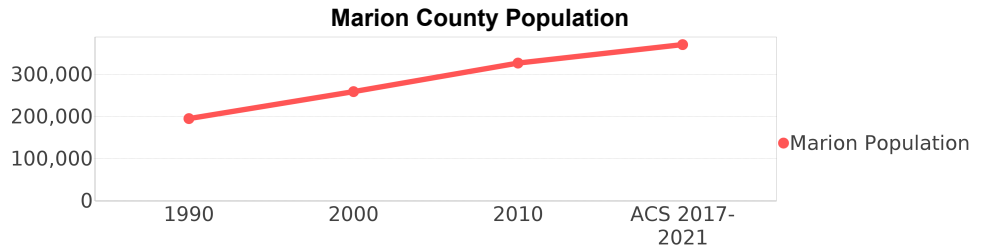
### Census Block Groups

120759704003, 120830026072, 120830027054, 120830027052, 120830027051, 120759705011, 120830027053, 120830027061

# Marion County Demographic Profile

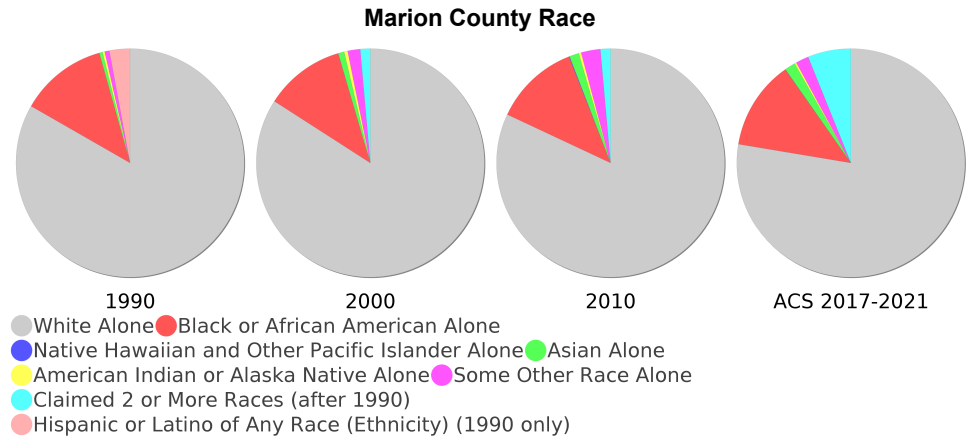
## General Population Trends - Marion <sup>5</sup>

Description	1990	2000	2010 <sup>1</sup>	ACS 2017-2021
Total Population	194,833	258,916	326,833	370,372
Total Households	78,177	106,755	133,966	150,880
Average Persons per Acre	0.183	0.243	0.307	0.35
Average Persons per Household	2.492	2.362	2.00	2.40
Average Persons per Family	2.905	2.858	2.94	3.04
Males	93,813	124,493	157,123	178,543



## Race and Ethnicity Trends - Marion <sup>5, 8, 9</sup>

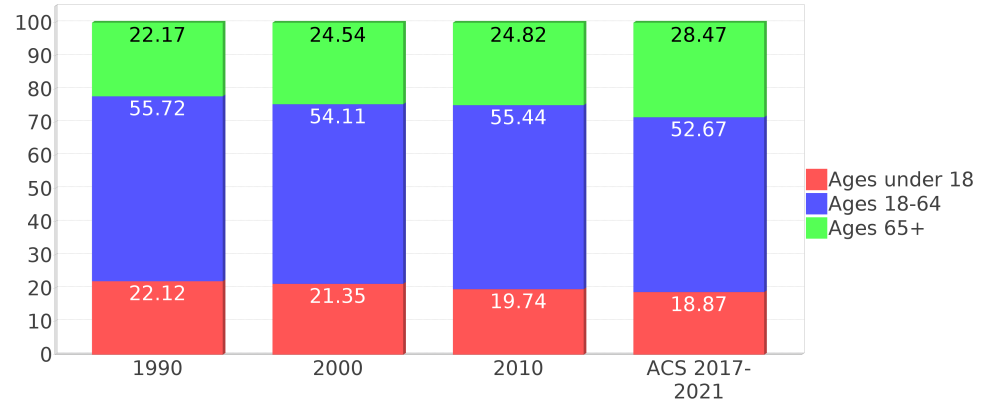
Description	1990	2000	2010 <sup>1</sup>	ACS 2017-2021
White Alone	167,094 (85.76%)	217,676 (84.07%)	267,887 (81.96%)	287,545 (77.64%)
Black or African American Alone	24,844 (12.75%)	29,401 (11.36%)	39,469 (12.08%)	46,686 (12.61%)
Native Hawaiian and Other Pacific Islander Alone	(NA)	52 (0.02%)	303 (0.09%)	133 (0.04%)
Asian Alone	919 (0.47%)	2,221 (0.86%)	4,439 (1.36%)	5,667 (1.53%)
American Indian or Alaska Native Alone	638 (0.33%)	1,314 (0.51%)	1,113 (0.34%)	963 (0.26%)
Some Other Race Alone	1,312 (0.67%)	4,572 (1.77%)	8,946 (2.74%)	6,766 (1.83%)
Claimed 2 or More Races	(NA)	3,680 (1.42%)	4,676 (1.43%)	22,612 (6.11%)
Hispanic or Latino of Any Race (Ethnicity)	5,860 (3.01%)	15,535 (6.00%)	33,360 (10.21%)	53,146 (14.35%)
Not Hispanic or Latino (Ethnicity)	188,973 (96.99%)	243,381 (94.00%)	293,473 (89.79%)	317,226 (85.65%)
Minority (Race and Ethnicity)	31,972 (16.41%)	50,741 (19.60%)	86,162 (26.36%)	115,338 (31.14%)



## Age Trends - Marion <sup>5</sup>

Description	1990	2000	2010 <sup>1</sup>	ACS 2017-2021
Under Age 5	6.32%	5.05%	5.29%	4.91%
Ages 5-17	15.80%	16.30%	14.45%	13.96%
Ages 18-21	4.46%	3.82%	4.27%	3.75%
Ages 22-29	9.92%	7.16%	7.79%	8.39%
Ages 30-39	13.55%	12.45%	9.90%	10.76%
Ages 40-49	11.26%	13.05%	12.75%	10.04%
Ages 50-64	16.52%	17.64%	20.72%	19.71%
Age 65 and Over	22.17%	24.54%	24.82%	28.47%
-Ages 65-74	14.45%	13.62%	13.65%	15.63%
-Ages 75-84	6.39%	8.91%	8.57%	9.63%
-Age 85 and Over	1.33%	2.01%	2.61%	3.21%
Median Age	NA	44	47	48.3

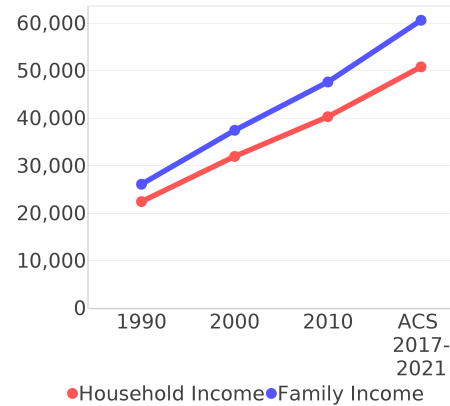
Percentage Population by Age Group - Marion



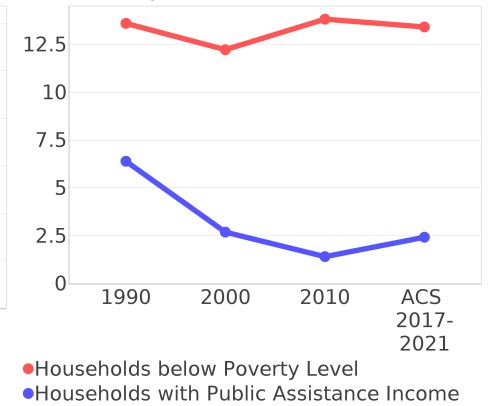
## Income Trends - Marion <sup>5</sup>

Description	1990	2000	2010 <sup>1</sup>	ACS 2017-2021
Median Household Income	\$22,452	\$31,944	\$40,339	\$50,808
Median Family Income	\$26,089	\$37,473	\$47,614	\$60,622
Population below Poverty Level	14.58%	13.08%	15.27%	14.62%
Households below Poverty Level	13.60%	12.22%	13.82%	13.41%
Households with Public Assistance Income	6.39%	2.69%	1.41%	2.42%

Income Trends



Poverty and Public Assistance



## Disability Trends - Marion <sup>10</sup>

See the Data Sources section below for an explanation about the differences in disability data among the various years.

Description	1990	2000	2010 <sup>1</sup>	ACS 2017-2021
Population 16 To 64 Years with a disability	14,066 (9.20%)	35,374 (14.73%)	NA (NA)	NA (NA)
Population 20 To 64 Years with a disability	NA (NA)	NA (NA)	NA (NA)	23,062 (12.68%)

## Educational Attainment Trends - Marion <sup>11, 5</sup>

Age 25 and Over

Description	1990	2000	2010 <sup>1</sup>	ACS 2017-2021
Less than 9th Grade	13,638 (9.95%)	11,414 (6.10%)	10,981 (4.60%)	9,835 (3.56%)
9th to 12th Grade, No Diploma	28,046 (20.47%)	29,399 (15.71%)	26,177 (10.95%)	22,218 (8.05%)
High School Graduate or Higher	95,317 (69.57%)	146,374 (78.20%)	201,804 (84.45%)	243,861 (88.38%)
Bachelor's Degree or Higher	15,765 (11.51%)	25,626 (13.69%)	40,778 (17.06%)	59,174 (21.45%)

## Language Trends - Marion <sup>5</sup>

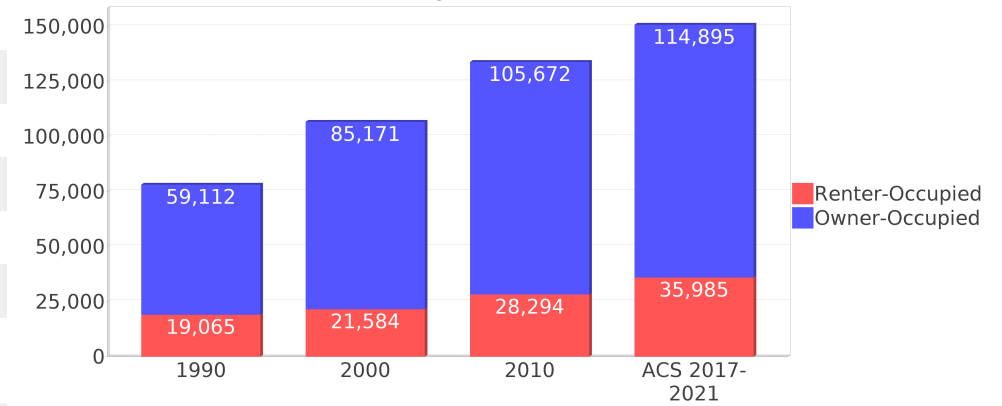
Age 5 and Over

Description	1990	2000	2010 <sup>1</sup>	ACS 2017-2021
Speaks English Well	2,695 (1.48%)	4,123 (1.68%)	6,878 (2.22%)	9,261 (2.63%)
Speaks English Not Well	NA (NA)	2,830 (1.15%)	4,723 (1.53%)	5,179 (1.47%)
Speaks English Not at All	NA (NA)	812 (0.33%)	1,744 (0.56%)	1,256 (0.36%)
Speaks English Not Well or Not at All	1,523 (0.83%)	3,642 (1.48%)	6,467 (2.09%)	6,435 (1.83%)
Speaks English Less than Very Well	NA (NA)	7,765 (3.16%)	13,345 (4.31%)	15,696 (4.46%)

## Housing Trends - Marion <sup>5</sup>

Description	1990	2000	2010 <sup>1</sup>	ACS 2017-2021
Total	94,567	122,663	161,264	175,486
Units per Acre	0.089	0.115	0.152	0.16
Single-Family Units	47,000	75,857	108,996	123,008
Multi-Family Units	8,581	11,542	16,063	18,672
Mobile Home Units	22,130	34,455	35,841	33,465
Owner-Occupied Units	59,112	85,171	105,672	114,895
Renter-Occupied Units	19,065	21,584	28,294	35,985
Vacant Units	16,390	15,908	27,298	24,606
Median Housing Value	\$61,800	\$70,100	\$150,700	\$160,300
Occupied Housing Units w/No Vehicle	5,743 (7.35%)	6,206 (5.81%)	6,295 (4.70%)	7,157 (4.74%)
Median year householder moved into unit - Total	NA	NA	NA	2012
Median year householder moved into unit - Owner Occupied	NA	NA	NA	2009
Median year householder moved into unit - Renter Occupied	NA	NA	NA	2016
Abroad 1 year ago	NA	NA	NA	1,468
Different house in United States 1 year ago	NA	NA	NA	42,761
Same house 1 year ago	NA	NA	NA	323,139
Geographical Mobility in the Past Year - Total	NA	NA	NA	323,139

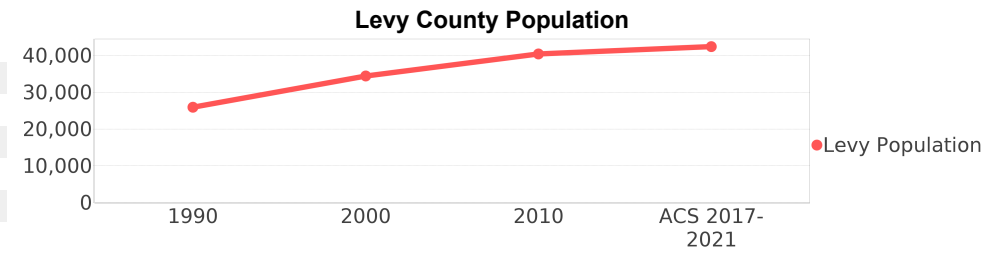
## Housing Tenure - Marion



# Levy County Demographic Profile

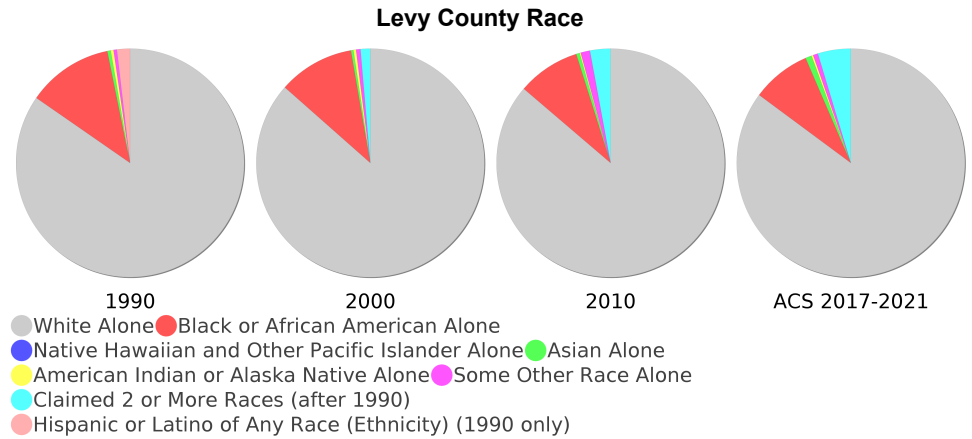
## General Population Trends - Levy <sup>5</sup>

Description	1990	2000	2010 <sup>1</sup>	ACS 2017-2021
Total Population	25,923	34,450	40,415	42,392
Total Households	10,079	13,867	15,814	17,248
Average Persons per Acre	0.036	0.047	0.055	0.06
Average Persons per Household	2.572	2.436	3.00	2.44
Average Persons per Family	2.998	2.963	3.08	3.09
Males	12,397	16,770	19,846	20,737



## Race and Ethnicity Trends - Levy <sup>5, 8, 9</sup>

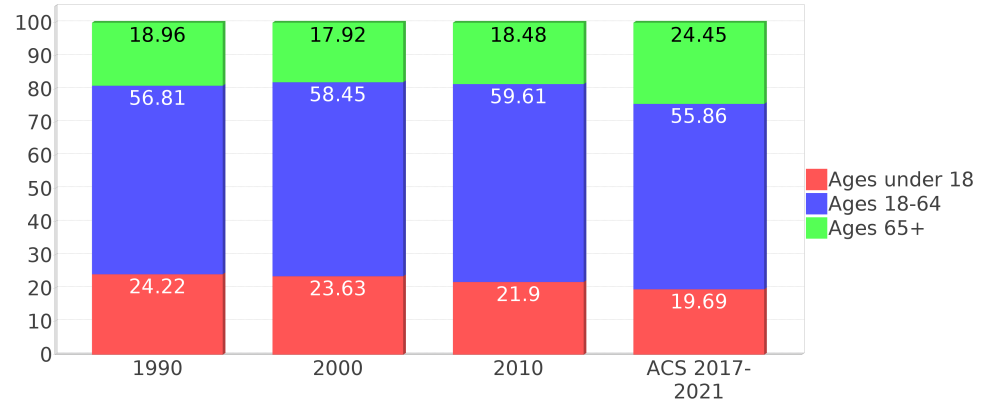
Description	1990	2000	2010 <sup>1</sup>	ACS 2017-2021
White Alone	22,346 (86.20%)	29,801 (86.51%)	34,853 (86.24%)	36,089 (85.13%)
Black or African American Alone	3,211 (12.39%)	3,708 (10.76%)	3,592 (8.89%)	3,549 (8.37%)
Native Hawaiian and Other Pacific Islander Alone	(NA)	1 (0.00%)	0 (0.00%)	0 (0.00%)
Asian Alone	126 (0.49%)	118 (0.34%)	198 (0.49%)	375 (0.88%)
American Indian or Alaska Native Alone	108 (0.42%)	130 (0.38%)	65 (0.16%)	104 (0.25%)
Some Other Race Alone	124 (0.48%)	212 (0.62%)	533 (1.32%)	291 (0.69%)
Claimed 2 or More Races	(NA)	480 (1.39%)	1,174 (2.90%)	1,984 (4.68%)
Hispanic or Latino of Any Race (Ethnicity)	490 (1.89%)	1,406 (4.08%)	2,775 (6.87%)	3,780 (8.92%)
Not Hispanic or Latino (Ethnicity)	25,433 (98.11%)	33,044 (95.92%)	37,640 (93.13%)	38,612 (91.08%)
Minority (Race and Ethnicity)	3,909 (15.08%)	5,801 (16.84%)	7,843 (19.41%)	9,112 (21.49%)



## Age Trends - Levy <sup>5</sup>

Description	1990	2000	2010 <sup>1</sup>	ACS 2017-2021
Under Age 5	6.42%	5.66%	5.72%	4.98%
Ages 5-17	17.80%	17.97%	16.19%	14.70%
Ages 18-21	4.82%	4.30%	4.69%	4.32%
Ages 22-29	9.39%	7.70%	7.89%	7.68%
Ages 30-39	13.50%	13.48%	9.87%	10.05%
Ages 40-49	12.09%	13.20%	14.42%	11.14%
Ages 50-64	17.02%	19.77%	22.74%	22.68%
Age 65 and Over	18.96%	17.92%	18.48%	24.45%
-Ages 65-74	12.33%	10.48%	11.30%	14.50%
-Ages 75-84	5.48%	6.12%	5.81%	7.75%
-Age 85 and Over	1.15%	1.31%	1.38%	2.20%
Median Age	NA	41	44	47.5

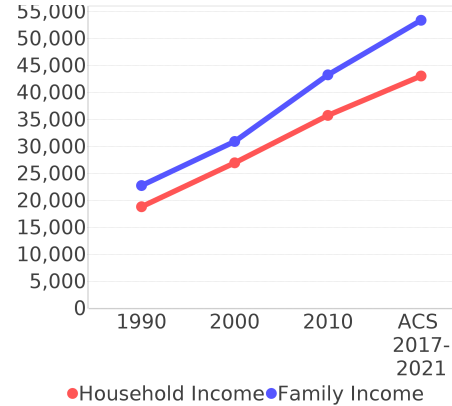
Percentage Population by Age Group - Levy



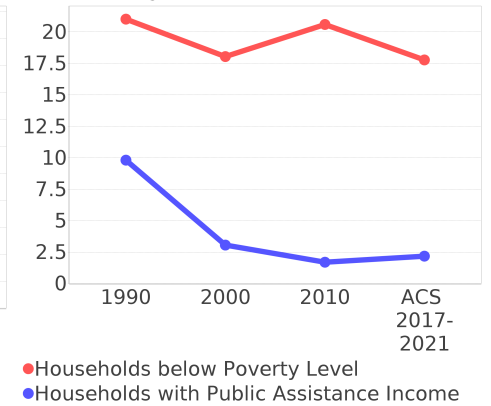
## Income Trends - Levy <sup>5</sup>

Description	1990	2000	2010 <sup>1</sup>	ACS 2017-2021
Median Household Income	\$18,807	\$26,959	\$35,737	\$43,029
Median Family Income	\$22,743	\$30,899	\$43,256	\$53,365
Population below Poverty Level	20.71%	18.58%	21.58%	18.04%
Households below Poverty Level	21.02%	18.04%	20.60%	17.77%
Households with Public Assistance Income	9.81%	3.05%	1.69%	2.18%

Income Trends



Poverty and Public Assistance



## Disability Trends - Levy <sup>10</sup>

See the Data Sources section below for an explanation about the differences in disability data among the various years.

Description	1990	2000	2010 <sup>1</sup>	ACS 2017-2021
Population 16 To 64 Years with a disability	2,456 (12.36%)	5,514 (17.27%)	NA (NA)	NA (NA)
Population 20 To 64 Years with a disability	NA (NA)	NA (NA)	NA (NA)	3,957 (17.45%)

## Educational Attainment Trends - Levy <sup>11, 5</sup>

Age 25 and Over

Description	1990	2000	2010 <sup>1</sup>	ACS 2017-2021
Less than 9th Grade	2,485 (14.11%)	1,740 (7.24%)	1,650 (5.77%)	1,170 (3.75%)
9th to 12th Grade, No Diploma	4,064 (23.08%)	4,531 (18.86%)	3,982 (13.92%)	2,707 (8.69%)
High School Graduate or Higher	11,063 (62.82%)	17,759 (73.90%)	22,966 (80.31%)	27,287 (87.56%)
Bachelor's Degree or Higher	1,457 (8.27%)	2,553 (10.62%)	3,483 (12.18%)	4,708 (15.11%)

## Language Trends - Levy <sup>5</sup>

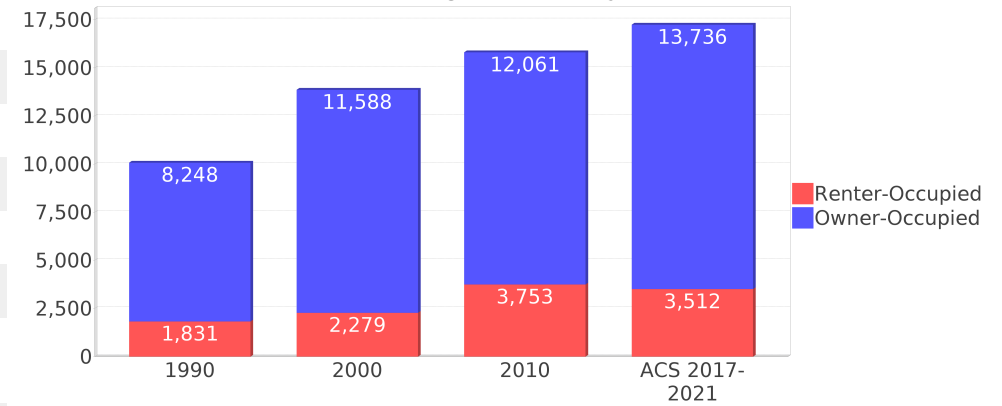
Age 5 and Over

Description	1990	2000	2010 <sup>1</sup>	ACS 2017-2021
Speaks English Well	241 (0.99%)	309 (0.95%)	315 (0.83%)	678 (1.68%)
Speaks English Not Well	NA (NA)	403 (1.24%)	349 (0.92%)	423 (1.05%)
Speaks English Not at All	NA (NA)	57 (0.18%)	234 (0.61%)	191 (0.47%)
Speaks English Not Well or Not at All	77 (0.32%)	460 (1.42%)	583 (1.53%)	614 (1.52%)
Speaks English Less than Very Well	NA (NA)	769 (2.37%)	898 (2.36%)	1,292 (3.21%)

## Housing Trends - Levy <sup>5</sup>

Description	1990	2000	2010 <sup>1</sup>	ACS 2017-2021
Total	12,307	16,570	19,696	20,743
Units per Acre	0.017	0.023	0.027	0.03
Single-Family Units	5,208	7,309	9,504	10,762
Multi-Family Units	309	629	1,077	1,067
Mobile Home Units	4,498	8,530	9,000	8,841
Owner-Occupied Units	8,248	11,588	12,061	13,736
Renter-Occupied Units	1,831	2,279	3,753	3,512
Vacant Units	2,228	2,703	3,882	3,495
Median Housing Value	\$49,000	\$55,100	\$112,100	\$130,200
Occupied Housing Units w/No Vehicle	801 (7.95%)	774 (5.58%)	981 (6.20%)	740 (4.29%)
Median year householder moved into unit - Total	NA	NA	NA	2010
Median year householder moved into unit - Owner Occupied	NA	NA	NA	2007
Median year householder moved into unit - Renter Occupied	NA	NA	NA	2016
Abroad 1 year ago	NA	NA	NA	43
Different house in United States 1 year ago	NA	NA	NA	4,603
Same house 1 year ago	NA	NA	NA	37,263
Geographical Mobility in the Past Year - Total	NA	NA	NA	37,263

## Housing Tenure - Levy



# Data Sources

## ACS vs Census Data

(1) The 2010 Census data is represented by a combination of decennial and ACS (2006-2010) data. The General Population Trends, Race and Ethnicity Trends, Age Trends are entirely from decennial. The Income Trends, Language Trends are entirely from the ACS. The Housing Trends section is derived from both: Decennial (Total # Housing Units, Housing Units per Acre, Owner-Occupied Units, Renter-Occupied Units, Vacant Units); ACS (Single Family Units, Multi-family Units, Mobile Homes, Median Housing Value, Occupied Housing Units w/No Vehicle).

## Area

(2) The geographic area of the community based on a user-defined community boundary or area of interest (AOI) boundary.

## Jurisdiction

(3) Jurisdiction(s) includes local government boundaries that intersect the user-defined community or AOI boundary.

## Goals, Values and History

(4) Information under the headings Goals and Values and History is entered manually by the user before the Sociocultural Data Report (SDR) is generated. This information is usually not available for communities with boundaries that are based on Census-defined places (i.e., not user-specified).

## Demographic Data

(5) Demographic data reported under the headings General Population Trends, Race and Ethnicity Trends, Age Trends, Income Trends, Educational Attainment Trends, Language Trends, and Housing Trends is from the U.S. Decennial Census for 1990 and 2000 and the American Community Survey (ACS) 5-year estimates for 2006-2010 and ACS 2017-2021. The data was gathered at the block group level for user-defined communities, Census places, and AOIs, and at the county level for counties. Depending on the dataset, the data represents 100% counts (Census Summary File 1) or sample-based information (Census Summary File 3 or ACS). For more information about using demographic data, please see the training videos located here: <https://www.fdot.gov/environment/pubs/sce/sce1.shtm>.

## About the Census Data

(6) The block group analysis for ETDM project analysis areas, user-defined communities, Census places, and AOI boundaries do not always correspond precisely to block group boundaries. To estimate the actual population more accurately, the SDR analysis adjusts the geographic area and data of affected block groups using the following methodology:

Delete overlapping census blocks with extremely low populations (2 or fewer people)  
Remove the portion of the block group that lies outside of the analysis area  
Recalculate the demographics assuming an equal area distribution of the population

Note that there may be areas where there is no population.

(7) Use caution when comparing the 100% count data (Decennial Census) to the sample-based data (ACS). In any given year, about one in 40 U.S. households will receive the ACS questionnaire. Over any five-year period, about one in eight households will receive the questionnaire, as compared to about one in six that received the long form questionnaire for the Decennial Census 2000. (Source: [https://www.census.gov/content/dam/Census/programs-surveys/acs/news/10ACS\\_keyfacts.pdf](https://www.census.gov/content/dam/Census/programs-surveys/acs/news/10ACS_keyfacts.pdf)) The U.S. Census Bureau provides help with this process: <https://www.census.gov/programs-surveys/acs/guidance/comparing-acs-data.html>

(8) Race and ethnicity are separate questions on the Census questionnaire. Individuals can report multiple race and ethnicity answers; therefore, numbers in the Race and Ethnicity portion of this report may add up to be greater than the total population. In addition, use caution when interpreting changes in race and ethnicity over time. Starting with the 2000 Decennial Census, respondents could select one or more race categories. Also in 2000, the placement of the question about Hispanic origin changed, helping to increase responsiveness to the Hispanic-origin question. Because of these and other changes, the 1990 data on race and ethnicity are not directly comparable with data from later censuses. (Source: <https://www.census.gov/library/publications/2001/dec/c2kbr01-01.html>)

(9) The "Minority" calculations use both the race and ethnicity responses from Census and ACS data. In this report, "Minority" refers to individuals who list a race other than White and/or list their ethnicity as Hispanic/Latino. In other words, people who are multi-racial, any single race other than White, or Hispanic/Latino of any race are considered minorities. We use the following formula:  $MINORITY = TOTALPOP - WHITE\_NH$  where TOTALPOP is the Total Population and WHITE\_NH is the population with a race of White alone and an ethnicity of Not Hispanic or Latino. Translating this to the field names used in the census ACS source data, the formula looks like this:  $MINORITY = B01003\_E001 - B03002\_E003$ . (Note, the WHITE\_NH population is not reported separately in this report.)

(10) Disability data is not included in the 2010 Decennial Census or the 2006-2010 ACS. This data is available in the ACS 2017-2021 ACS. Because of changes made to the Census and ACS questions between 1990 and ACS, disability variables should not be compared from year to year. For example: 1) with the 1990 data, the disabilities are listed as a "work disability" while this distinction is not made with 2000 or ACS data; 2) the ACS data includes the institutionalized population (e.g. persons in prisons and group homes) while this population is not included in 1990 or 2000; and 3) the age groupings changed over the years.

(11) The category Bachelor's Degree or Higher under the heading Educational Attainment Trends is a subset of the category High School Graduate or Higher.

(12) Income of households. This includes the income of the householder and all other individuals 15 years old and over in the household, whether they are related to the householder or not. Because many households consist of only one person, average household income is usually less than average family income.

(13) Income of families. In compiling statistics on family income, the incomes of all members 15 years old and over related to the householder are summed and treated as a single amount.

(14) Age trends. The median age for 1990 is not available.

## Land Use Data

(15) The Land Use information Indicates acreages and percentages for the generalized land use types used to group parcel-specific, existing land use assigned by the county property appraiser office according to the Florida Department of Revenue land use codes.

## Community Facilities Data

- (16) Assisted Rental Housing Units - Identifies multifamily rental developments that receive funding assistance under federal, state, and local government programs to offer affordable housing as reported by the Shimberg Center for Housing Studies, University of Florida.
- (17) Mobile Home Parks - Identifies approved or acknowledged mobile home parks reported by the Florida Department of Business and Professional Regulation and Florida Department of Health.
- (18) Migrant Camps - Identifies migrant labor camp facilities inspected by the Florida Department of Health.
- (19) Group Care Facilities - Identifies group care facilities inspected by the Florida Department of Health.
- (20) Community Center and Fraternal Association Facilities - Identifies facilities reported by multiple sources.
- (21) Law Enforcement Correctional Facilities - Identifies facilities reported by multiple sources.
- (22) Cultural Centers - Identifies cultural centers including organizations, buildings, or complexes that promote culture and arts (e.g., aquariums and zoological facilities; arboreta and botanical gardens; dinner theaters; drive-ins; historical places and services; libraries; motion picture theaters; museums and art galleries; performing arts centers; performing arts theaters; planetariums; studios and art galleries; and theater producers stage facilities) reported by multiple sources.
- (23) Fire Department and Rescue Station Facilities - Identifies facilities reported by multiple sources.
- (24) Government Buildings - Identifies local, state, and federal government buildings reported by multiple sources.
- (25) Health Care Facilities - Identifies health care facilities including abortion clinics, dialysis clinics, medical doctors, nursing homes, osteopaths, state laboratories/clinics, and surgicenters/walk-in clinics reported by the Florida Department of Health.
- (26) Hospital Facilities - Identifies hospital facilities reported by multiple sources.
- (27) Law Enforcement Facilities - Identifies law enforcement facilities reported by multiple sources.
- (28) Parks and Recreational Facilities - Identifies parks and recreational facilities reported by multiple sources.
- (29) Religious Center Facilities - Identifies religious centers including churches, temples, synagogues, mosques, chapels, centers, and other types of religious facilities reported by multiple sources.
- (30) Private and Public Schools - Identifies private and public schools reported by multiple sources.
- (31) Social Service Centers - Identifies social service centers reported by multiple sources.
- (32) Veteran Organizations and Facilities

# County Data Sources

## ACS vs Census Data

(1) The 2010 Census data is represented by a combination of decennial and ACS (2006-2010) data. The General Population Trends, Race and Ethnicity Trends, Age Trends are entirely from decennial. The Income Trends, Language Trends are entirely from the ACS. The Housing Trends section is derived from both: Decennial (Total # Housing Units, Housing Units per Acre, Owner-Occupied Units, Renter-Occupied Units, Vacant Units); ACS (Single Family Units, Multi-family Units, Mobile Homes, Median Housing Value, Occupied Housing Units w/No Vehicle).

## About the Census Data

(34) Use caution when comparing the 100% count data (Decennial Census) to the sample-based data (ACS). In any given year, about one in 40 U.S. households will receive the ACS questionnaire. Over any five-year period, about one in eight households will receive the questionnaire, as compared to about one in six that received the long form questionnaire for the Decennial Census 2000. (Source: [https://www.census.gov/content/dam/Census/programs-surveys/acs/news/10ACS\\_keyfacts.pdf](https://www.census.gov/content/dam/Census/programs-surveys/acs/news/10ACS_keyfacts.pdf)) The U.S. Census Bureau provides help with this process: <https://www.census.gov/programs-surveys/acs/guidance/comparing-acs-data.html>

(35) Race and ethnicity are separate questions on the Census questionnaire. Individuals can report multiple race and ethnicity answers; therefore, numbers in the Race and Ethnicity portion of this report may add up to be greater than the total population. In addition, use caution when interpreting changes in race and ethnicity over time. Starting with the 2000 Decennial Census, respondents could select one or more race categories. Also in 2000, the placement of the question about Hispanic origin changed, helping to increase responsiveness to the Hispanic-origin question. Because of these and other changes, the 1990 data on race and ethnicity are not directly comparable with data from later censuses. (Source: <https://www.census.gov/library/publications/2001/dec/c2kbr01-01.html>)

(36) The "Minority" calculations use both the race and ethnicity responses from Census and ACS data. In this report, "Minority" refers to individuals who list a race other than White and/or list their ethnicity as Hispanic/Latino. In other words, people who are multi-racial, any single race other than White, or Hispanic/Latino of any race are considered minorities. We use the following formula:  $MINORITY = TOTALPOP - WHITE\_NH$  where TOTALPOP is the Total Population and WHITE\_NH is the population with a race of White alone and an ethnicity of Not Hispanic or Latino. Translating this to the field names used in the census ACS source data, the formula looks like this:  $MINORITY = B01003\_E001 - B03002\_E003$ . (Note, the WHITE\_NH population is not reported separately in this report.)

(37) Disability data is not included in the 2010 Decennial Census or the 2006-2010 ACS. This data is available in the ACS 2017-2021 ACS. Because of changes made to the Census and ACS questions between 1990 and ACS, disability variables should not be compared from year to year. For example: 1) with the 1990 data, the disabilities are listed as a "work disability" while this distinction is not made with 2000 or ACS data; 2) the ACS data includes the institutionalized population (e.g. persons in prisons and group homes) while this population is not included in 1990 or 2000; and 3) the age groupings changed over the years.

(38) The category Bachelor's Degree or Higher under the heading Educational Attainment Trends is a subset of the category High School Graduate or Higher.

## Metadata

- (39) Community and Fraternal Centers [https://etdmpub.florida-estat.org/meta/gc\\_communitycenter.xml](https://etdmpub.florida-estat.org/meta/gc_communitycenter.xml)
- (40) Correctional Facilities in Florida [https://etdmpub.florida-estat.org/meta/gc\\_correctional.xml](https://etdmpub.florida-estat.org/meta/gc_correctional.xml)
- (41) Cultural Centers in Florida [https://etdmpub.florida-estat.org/meta/gc\\_culturecenter.xml](https://etdmpub.florida-estat.org/meta/gc_culturecenter.xml)
- (42) Fire Department and Rescue Station Facilities in Florida [https://etdmpub.florida-estat.org/meta/gc\\_firestat.xml](https://etdmpub.florida-estat.org/meta/gc_firestat.xml)
- (43) Local, State, and Federal Government Buildings in Florida [https://etdmpub.florida-estat.org/meta/gc\\_govbuild.xml](https://etdmpub.florida-estat.org/meta/gc_govbuild.xml)
- (44) Florida Health Care Facilities [https://etdmpub.florida-estat.org/meta/gc\\_health.xml](https://etdmpub.florida-estat.org/meta/gc_health.xml)
- (45) Hospital Facilities in Florida [https://etdmpub.florida-estat.org/meta/gc\\_hospitals.xml](https://etdmpub.florida-estat.org/meta/gc_hospitals.xml)
- (46) Law Enforcement Facilities in Florida [https://etdmpub.florida-estat.org/meta/gc\\_lawenforce.xml](https://etdmpub.florida-estat.org/meta/gc_lawenforce.xml)
- (47) Florida Parks and Recreational Facilities [https://etdmpub.florida-estat.org/meta/gc\\_parks.xml](https://etdmpub.florida-estat.org/meta/gc_parks.xml)
- (48) Religious Centers [https://etdmpub.florida-estat.org/meta/gc\\_religion.xml](https://etdmpub.florida-estat.org/meta/gc_religion.xml)
- (49) Florida Public and Private Schools [https://etdmpub.florida-estat.org/meta/gc\\_schools.xml](https://etdmpub.florida-estat.org/meta/gc_schools.xml)
- (50) Social Service Centers [https://etdmpub.florida-estat.org/meta/gc\\_socialservice.xml](https://etdmpub.florida-estat.org/meta/gc_socialservice.xml)
- (51) Assisted Rental Housing Units in Florida [https://etdmpub.florida-estat.org/meta/gc\\_assisted\\_housing.xml](https://etdmpub.florida-estat.org/meta/gc_assisted_housing.xml)
- (52) Group Care Facilities <https://etdmpub.florida-estat.org/meta/groupcare.xml>
- (53) Mobile Home Parks in Florida [https://etdmpub.florida-estat.org/meta/gc\\_mobilehomes.xml](https://etdmpub.florida-estat.org/meta/gc_mobilehomes.xml)
- (54) Migrant Camps in Florida <https://etdmpub.florida-estat.org/meta/migrant.xml>
- (55) Veteran Organizations and Facilities [https://etdmpub.florida-estat.org/meta/gc\\_veterans.xml](https://etdmpub.florida-estat.org/meta/gc_veterans.xml)
- (56) Generalized Land Use [https://etdmpub.florida-estat.org/meta/lu\\_gen.xml](https://etdmpub.florida-estat.org/meta/lu_gen.xml)
- (57) Census Block Groups in Florida [https://etdmpub.florida-estat.org/meta/e2\\_cenacs\\_cci.xml](https://etdmpub.florida-estat.org/meta/e2_cenacs_cci.xml)
- (58) 1990 Census Block Groups in Florida [https://etdmpub.florida-estat.org/meta/e2\\_cenblkgrp\\_1990\\_cci.xml](https://etdmpub.florida-estat.org/meta/e2_cenblkgrp_1990_cci.xml)
- (59) 2000 Census Block Groups in Florida [https://etdmpub.florida-estat.org/meta/e2\\_cenblkgrp\\_2000\\_cci.xml](https://etdmpub.florida-estat.org/meta/e2_cenblkgrp_2000_cci.xml)
- (60) 2010 Census Block Groups in Florida [https://etdmpub.florida-estat.org/meta/e2\\_cenblkgrp\\_2010\\_cci.xml](https://etdmpub.florida-estat.org/meta/e2_cenblkgrp_2010_cci.xml)