

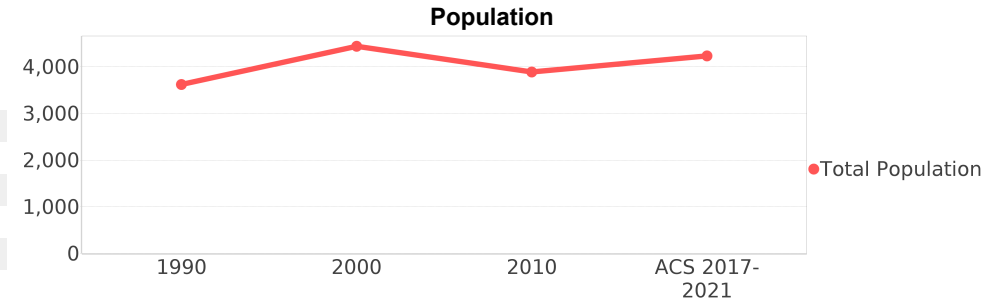
Stock Island (CDP)

Area: [2](#) 2.105 square miles
Jurisdiction - Cities: [3](#) Key West
Jurisdiction - Counties: [3](#) Monroe



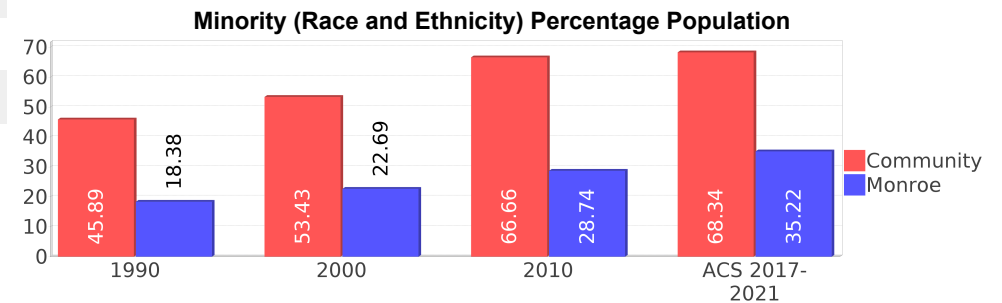
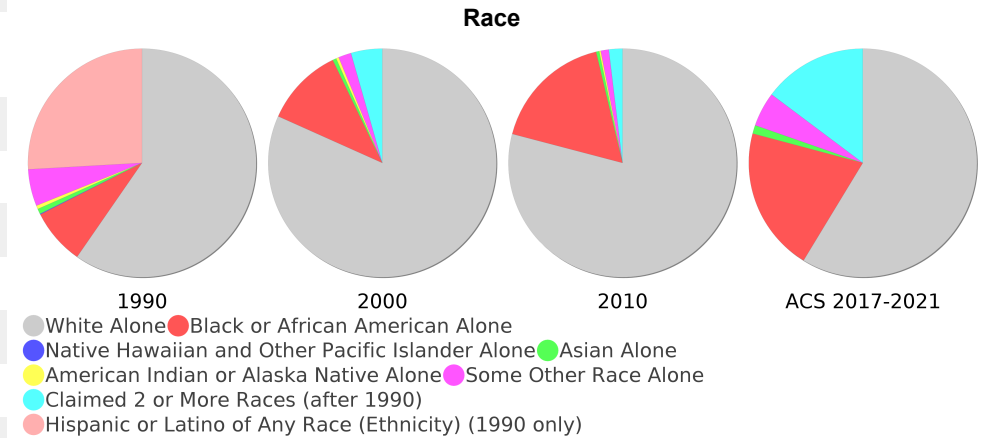
General Population Trends

Description	1990	2000	2010 ¹	ACS 2017-2021
Total Population	3,622	4,443	3,890	4,235
Total Households	1,429	1,725	1,388	1,518
Average Persons per Acre	6.19	9.35	5.95	9.06
Average Persons per Household	2.48	2.45	2.49	2.84
Average Persons per Family	3.05	3.09	3.00	3.16
Males	1,904	2,448	2,060	2,141
Females	1,717	1,995	1,830	2,094



Race and Ethnicity Trends ^{5, 8, 9}

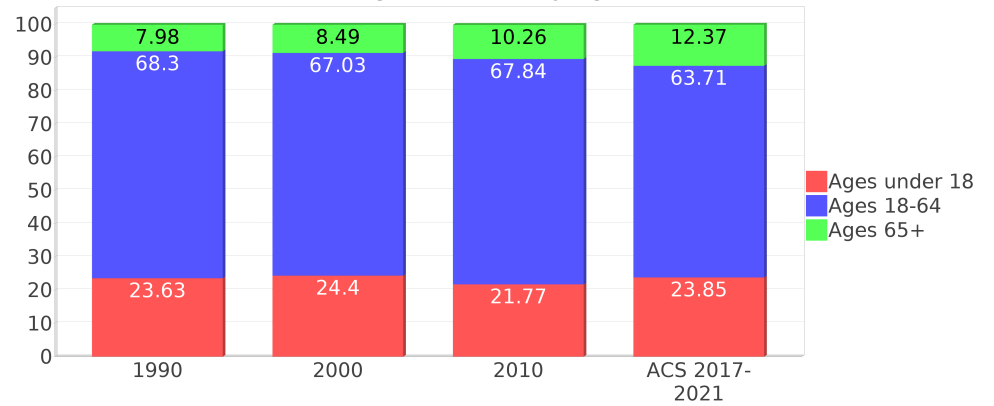
Description	1990	2000	2010 ¹	ACS 2017-2021
White Alone	2,915 (80.48%)	3,629 (81.68%)	3,074 (79.02%)	2,485 (58.68%)
Black or African American Alone	386 (10.66%)	495 (11.14%)	668 (17.17%)	865 (20.43%)
Native Hawaiian and Other Pacific Islander Alone	5 (0.14%)	0 (0.00%)	0 (0.00%)	0 (0.00%)
Asian Alone	36 (0.99%)	23 (0.52%)	17 (0.44%)	51 (1.20%)
American Indian or Alaska Native Alone	25 (0.69%)	17 (0.38%)	9 (0.23%)	0 (0.00%)
Some Other Race Alone	254 (7.01%)	81 (1.82%)	44 (1.13%)	207 (4.89%)
Claimed 2 or More Races	NA (NA)	197 (4.43%)	75 (1.93%)	625 (14.76%)
Hispanic or Latino of Any Race (Ethnicity)	1,266 (34.95%)	1,840 (41.41%)	1,924 (49.46%)	2,037 (48.10%)
Not Hispanic or Latino (Ethnicity)	2,356 (65.05%)	2,603 (58.59%)	1,966 (50.54%)	2,198 (51.90%)
Minority (Race and Ethnicity)	1,662 (45.89%)	2,374 (53.43%)	2,593 (66.66%)	2,894 (68.34%)



Age Trends ⁵

Description	1990	2000	2010 ¹	ACS 2017-2021
Under Age 5	7.04%	5.78%	7.04%	7.01%
Ages 5-17	16.59%	18.61%	14.73%	16.84%
Ages 18-21	5.55%	3.26%	5.35%	5.29%
Ages 22-29	14.33%	13.37%	12.31%	10.60%
Ages 30-39	18.03%	13.48%	14.45%	15.96%
Ages 40-49	14.41%	17.87%	16.07%	17.05%
Ages 50-64	15.99%	19.04%	19.67%	14.81%
Age 65 and Over	7.98%	8.49%	10.26%	12.37%
-Ages 65-74	5.16%	6.95%	6.99%	7.60%
-Ages 75-84	2.46%	0.81%	2.60%	3.78%
-Age 85 and Over	0.30%	0.70%	0.64%	0.97%
Median Age	NA	40	38	37

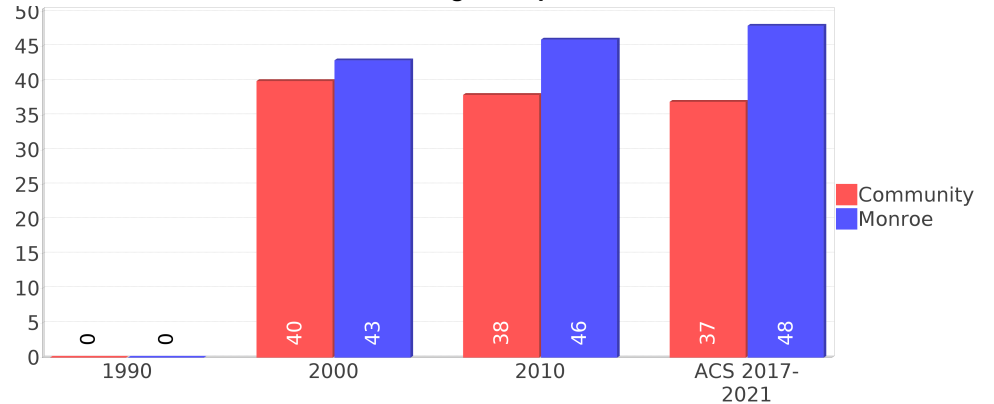
Percentage Population by Age Group



Income Trends ^{12, 13, 5}

Description	1990	2000	2010 ¹	ACS 2017-2021
Median Household Income	\$23,125	\$40,121	\$53,340	\$77,508
Median Family Income	\$25,179	\$46,361	\$61,138	\$70,308
Population below Poverty Level	18.06%	20.35%	20.08%	16.29%
Households below Poverty Level	19.87%	18.43%	15.63%	18.91%
Households with Public Assistance Income	6.16%	1.62%	0.00%	9.82%

Median Age Comparison



Disability Trends ¹⁰

See the Data Sources section below for an explanation about the differences in disability data among the various years.

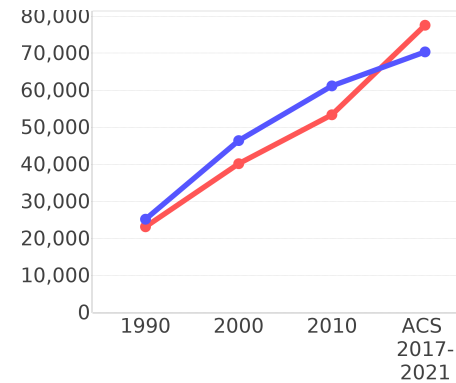
Description	1990	2000	2010 ¹	ACS 2017-2021
Population 16 To 64 Years with a disability	256 (9.62%)	872 (20.92%)	(NA)	(NA)
Population 20 To 64 Years with a disability	(NA)	(NA)	(NA)	321 (12.27%)

Educational Attainment Trends ^{11, 5}

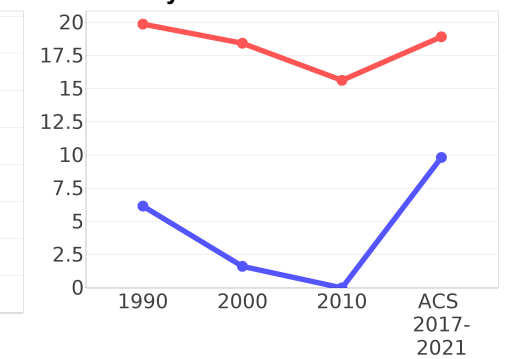
Age 25 and Over

Description	1990	2000	2010 ¹	ACS 2017-2021
Less than 9th Grade	501 (21.51%)	474 (15.82%)	262 (12.09%)	212 (7.46%)
9th to 12th Grade, No Diploma	503 (21.60%)	548 (18.28%)	451 (20.81%)	255 (8.98%)
High School Graduate or Higher	1,323 (56.81%)	1,974 (65.87%)	1,453 (67.05%)	2,372 (83.52%)
Bachelor's Degree or Higher	173 (7.43%)	290 (9.68%)	284 (13.11%)	554 (19.51%)

Income Trends



Poverty and Public Assistance



Language Trends ⁵

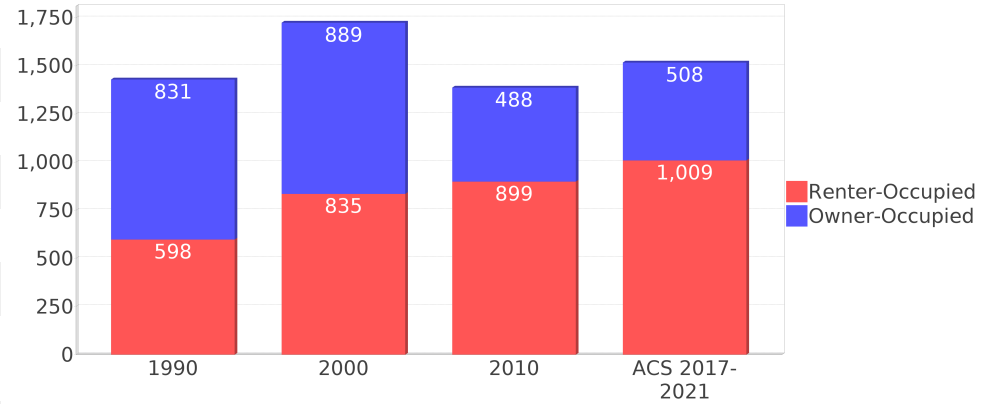
Age 5 and Over

Description	1990	2000	2010 ¹	ACS 2017-2021
Speaks English Well	215 (6.55%)	347 (8.29%)	334 (10.48%)	509 (12.93%)
Speaks English Not Well	NA (NA)	452 (10.80%)	463 (14.52%)	386 (9.80%)
Speaks English Not at All	NA (NA)	199 (4.75%)	137 (4.30%)	139 (3.53%)
Speaks English Not Well or Not at All	359 (10.94%)	651 (15.55%)	600 (18.82%)	525 (13.34%)
Speaks English Less than Very Well	NA (NA)	998 (23.84%)	935 (29.33%)	1,035 (26.29%)

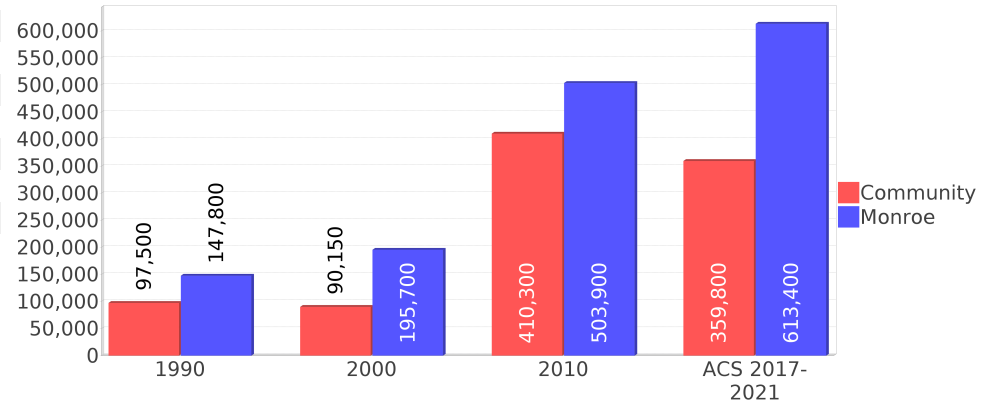
Housing Trends ⁵

Description	1990	2000	2010 ¹	ACS 2017-2021
Total	1,571	1,854	1,646	1,748
Units per Acre	2.87	3.88	3.26	3.42
Single-Family Units	187	366	462	707
Multi-Family Units	231	312	317	612
Mobile Home Units	917	1,102	941	426
Owner-Occupied Units	831	889	488	508
Renter-Occupied Units	598	835	899	1,009
Vacant Units	142	129	258	230
Median Housing Value	\$97,500	\$90,150	\$410,300	\$359,800
Occupied Housing Units w/No Vehicle	180 (12.60%)	305 (17.68%)	148 (10.66%)	243 (16.01%)

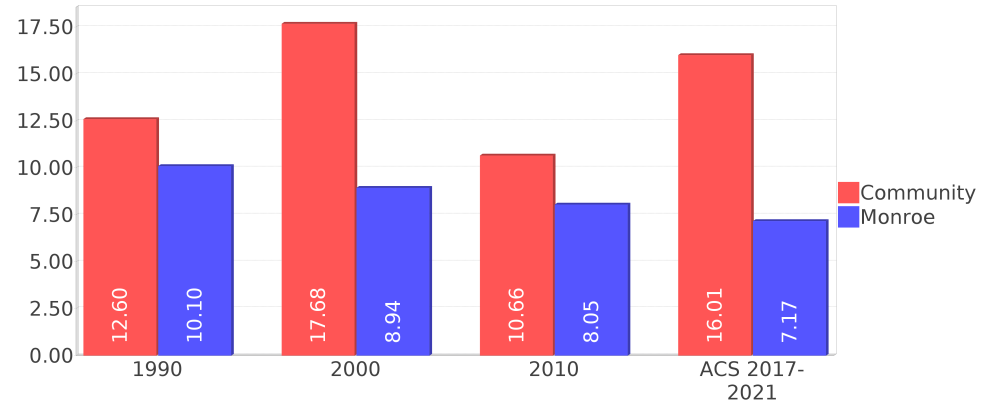
Housing Tenure



Median Housing Value Comparison



Occupied Units With No Vehicles Available



Geographic Mobility

Description	ACS 2017-2021
Median year householder moved into unit - Total	2014
Median year householder moved into unit - Owner Occupied	2006
Median year householder moved into unit - Renter Occupied	2016
Abroad 1 year ago	0
Different house in United States 1 year ago	816
Same house 1 year ago	3,387
Geographical Mobility in the Past Year - Total	4,204

Computers and Internet

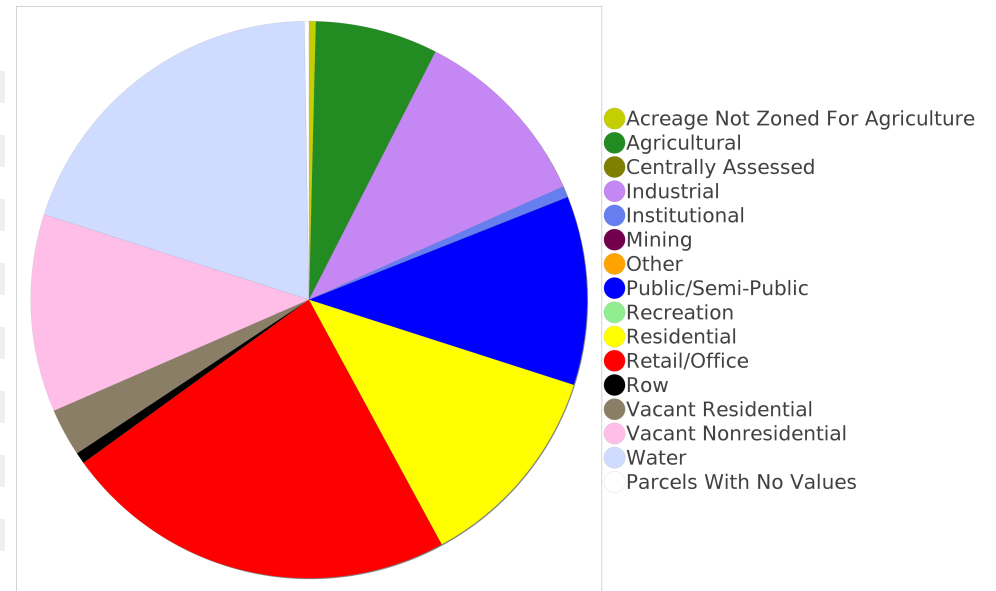
Description	ACS 2017-2021
Total Households Types of Computers in HH	1,518
Households with 1 or more device	1,371
Households with no computer	146
Total Households Presence and Types of Internet Subscriptions	1,518
Households with an internet subscription	1,116
Households with internet access without a subscription	167
Households with no internet access	233

Household Languages

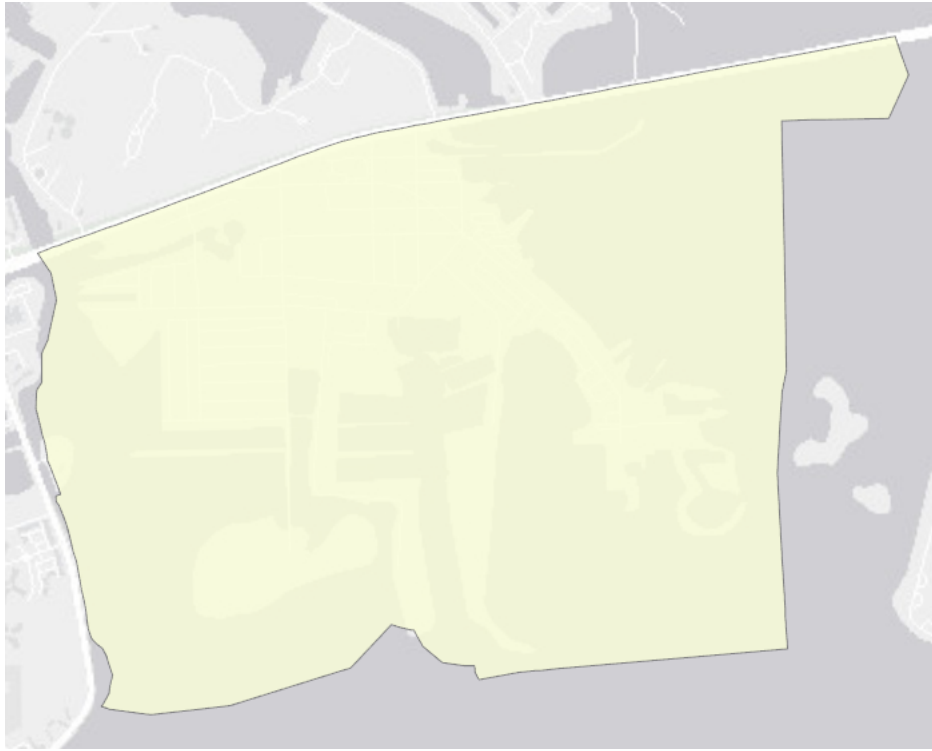
Description	ACS 2017-2021
Total Households by Household Language	1,518
Household Not Limited English Speaking Status	1,202
Spanish: Limited English speaking household	288
Indo-European languages: Limited English speaking household	24
Asian and Pacific Island languages: Limited English speaking household	1
Other languages: Limited English speaking household	0

Existing Land Use ¹⁵

Land Use Type	Acres	Percentage
Acreage Not Zoned For Agriculture	3	0.22%
Agricultural	54	4.01%
Centrally Assessed	0	0.00%
Industrial	82	6.09%
Institutional	5	0.37%
Mining	0	0.00%
Other	0	0.00%
Public/Semi-Public	83	6.16%
Recreation	0	0.00%
Residential	92	6.83%
Retail/Office	174	12.92%
Row	5	0.37%
Vacant Residential	21	1.56%
Vacant Nonresidential	87	6.46%
Water	150	11.14%
Parcels With No Values	2	0.15%



Location Maps



Community Facilities

The community facilities information below is useful in a variety of ways for environmental evaluations. These community resources should be evaluated for potential sociocultural effects, such as accessibility and relocation potential. The facility types may indicate the types of population groups present in the project study area. Facility staff and leaders can be sources of community information such as who uses the facility and how it is used. Additionally, community facilities are potential public meeting venues.

Assisted Rental Housing Units

Facility Name	Address	Zip Code
FLAGLER VILLAGE	5300 MACDONALD AVENUE	33040
MERIDIAN WEST	6701 SHRIMP ROAD	33040
BANYAN GROVE	5451 MACDONALD AVENUE	33040
CAYO DEL MAR	5501 THIRD AVE	33040

Cultural Centers

Facility Name	Address	Zip Code
KEY WEST FINE ART PRINTING	7007 SHRIMP RD	33040

Fire Department and Rescue Station Facilities

Facility Name	Address	Zip Code
MONROE COUNTY FIRE DEPARTMENT STATION 8 (STOCK ISLAND)	6180 2ND ST	33040

Florida Parks and Recreational Facilities

Facility Name	Address	Zip Code
STOCK ISLAND WAYSIDE PARK PUBLIC BOAT RAMP (MILE MARKER 5)	OVERSEAS HIGHWAY, MILE MARKER 5, OCEANSIDE	33040
BERNSTEIN PARK	6751 FIFTH ST	33040

Religious Centers

Facility Name	Address	Zip Code
KEY WEST BAPTIST TEMPLE	5727 2ND AVENUE	33040
COVENANT WORD CHURCH	5580 MACDONALD AVENUE	33040

Mobile Home Parks

Facility Name	Address	Zip Code
ISLAND LIFE VILLAGE	6500 MALONEY AVE	33040
WATERS EDGE COLONY MOBILE HOME PARK	5700 LAUREL AVE	33040
COCONUT GROVE MOBILE HOME PARK	6621 MALONEY AVE 4-A	33040
TROPIC PALMS MOBILE HOME PARK	6125 2ND ST	33040
SUNSET HARBOR MANUFACTURED HOME COMMUNITY	5031 FIFTH AVE STOCK ISLAND	33040
LIZ'S TRAILER PARK	5730 4TH AVE.	33040

Block Groups

The following Census Block Groups were used to calculate demographics for this report.

1990 Census Block Groups

120879719001, 120879718006, 120879718004, 120879718002, 120879718005, 120879718003, 120879720001

2000 Census Block Groups

120879719001, 120879718004, 120879720001, 120879718003, 120879718005, 120879718002

2010 Census Block Groups

120879720003, 120879718003, 120879718004, 120879719001, 120879718002, 120879718001

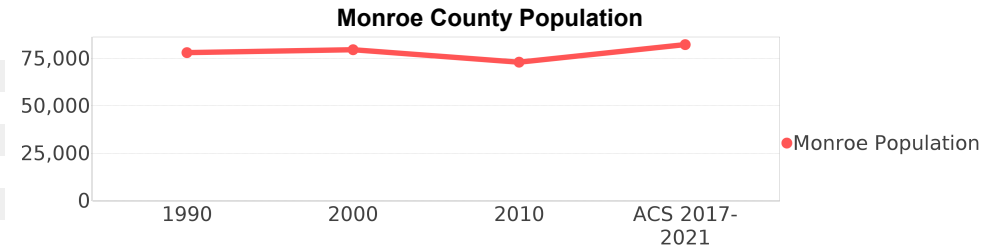
Census Block Groups

120879718002, 120879718001, 120879720004, 120879718003, 120879719001, 120879718004

Monroe County Demographic Profile

General Population Trends - Monroe ⁵

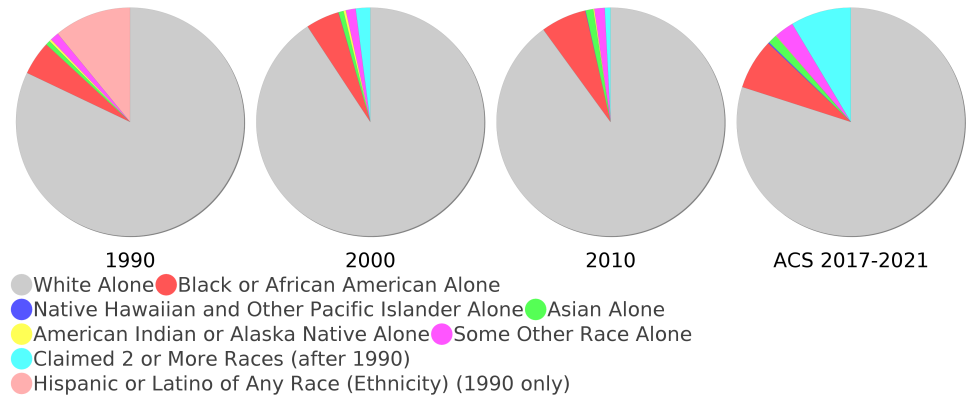
Description	1990	2000	2010 ¹	ACS 2017-2021
Total Population	78,024	79,589	73,065	82,244
Total Households	33,583	35,086	29,791	33,643
Average Persons per Acre	0.117	0.117	0.107	0.12
Average Persons per Household	2.323	2.229	2.00	2.39
Average Persons per Family	2.80	2.828	3.126	3.07
Males	40,976	42,327	38,795	42,982



Race and Ethnicity Trends - Monroe ^{5, 8, 9}

Description	1990	2000	2010 ¹	ACS 2017-2021
White Alone	71,840 (92.07%)	72,214 (90.73%)	65,742 (89.98%)	65,748 (79.94%)
Black or African American Alone	4,203 (5.39%)	3,760 (4.72%)	4,698 (6.43%)	5,886 (7.16%)
Native Hawaiian and Other Pacific Islander Alone	(NA)	35 (0.04%)	48 (0.07%)	143 (0.17%)
Asian Alone	576 (0.74%)	566 (0.71%)	802 (1.10%)	1,044 (1.27%)
American Indian or Alaska Native Alone	258 (0.33%)	262 (0.33%)	107 (0.15%)	64 (0.08%)
Some Other Race Alone	1,093 (1.40%)	1,113 (1.40%)	1,066 (1.46%)	2,292 (2.79%)
Claimed 2 or More Races	(NA)	1,639 (2.06%)	602 (0.82%)	7,067 (8.59%)
Hispanic or Latino of Any Race (Ethnicity)	9,580 (12.28%)	12,500 (15.71%)	14,324 (19.60%)	20,657 (25.12%)
Not Hispanic or Latino (Ethnicity)	68,444 (87.72%)	67,089 (84.29%)	58,741 (80.40%)	61,587 (74.88%)
Minority (Race and Ethnicity)	14,338 (18.38%)	18,062 (22.69%)	21,001 (28.74%)	28,968 (35.22%)

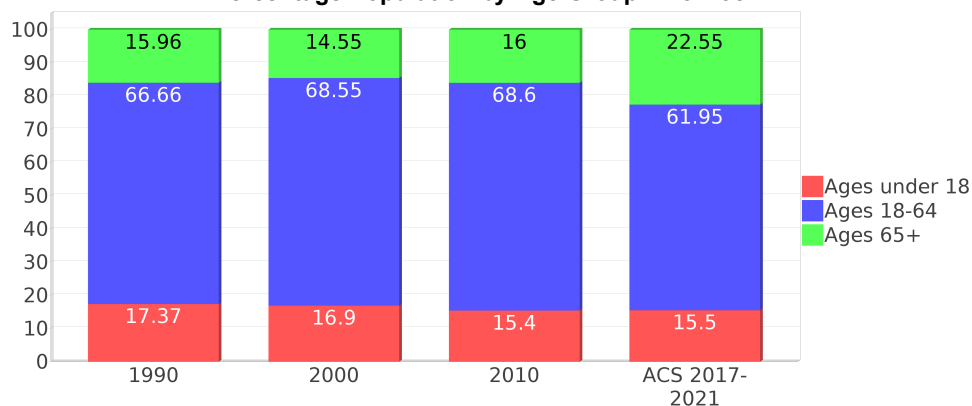
Monroe County Race



Age Trends - Monroe ⁵

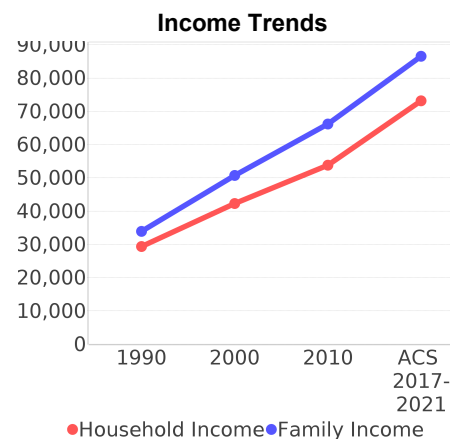
Description	1990	2000	2010 ¹	ACS 2017-2021
Under Age 5	5.73%	4.13%	4.31%	4.45%
Ages 5-17	11.64%	12.77%	11.09%	11.05%
Ages 18-21	3.98%	3.31%	3.76%	3.47%
Ages 22-29	12.15%	9.10%	9.65%	8.58%
Ages 30-39	18.63%	15.57%	12.80%	12.53%
Ages 40-49	14.63%	19.15%	15.59%	12.66%
Ages 50-64	17.28%	21.43%	26.80%	24.71%
Age 65 and Over	15.96%	14.55%	16.00%	22.55%
-Ages 65-74	10.53%	8.88%	9.64%	13.95%
-Ages 75-84	4.54%	4.67%	4.91%	6.52%
-Age 85 and Over	0.89%	0.99%	1.45%	2.07%
Median Age	NA	43	46	48

Percentage Population by Age Group - Monroe

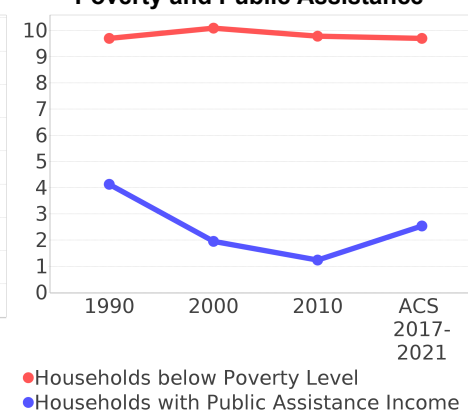


Income Trends - Monroe ⁵

Description	1990	2000	2010 ¹	ACS 2017-2021
Median Household Income	\$29,351	\$42,283	\$53,821	\$73,153
Median Family Income	\$33,906	\$50,734	\$66,152	\$86,530
Population below Poverty Level	10.77%	10.18%	10.76%	10.97%
Households below Poverty Level	9.70%	10.09%	9.78%	9.70%
Households with Public Assistance Income	4.13%	1.95%	1.24%	2.54%



Poverty and Public Assistance



Disability Trends - Monroe ¹⁰

See the Data Sources section below for an explanation about the differences in disability data among the various years.

Description	1990	2000	2010 ¹	ACS 2017-2021
Population 16 To 64 Years with a disability	4,278 (6.86%)	13,281 (17.92%)	NA (NA)	NA (NA)
Population 20 To 64 Years with a disability	NA (NA)	NA (NA)	NA (NA)	3,487 (7.16%)

Educational Attainment Trends - Monroe ^{11, 5}

Age 25 and Over

Description	1990	2000	2010 ¹	ACS 2017-2021
Less than 9th Grade	4,478 (7.64%)	2,827 (4.62%)	1,946 (3.44%)	2,268 (3.52%)
9th to 12th Grade, No Diploma	7,404 (12.64%)	6,405 (10.47%)	3,830 (6.76%)	2,845 (4.41%)
High School Graduate or Higher	46,703 (79.72%)	51,929 (84.91%)	50,858 (89.80%)	59,339 (92.07%)
Bachelor's Degree or Higher	11,901 (20.31%)	15,583 (25.48%)	16,278 (28.74%)	23,001 (35.69%)

Language Trends - Monroe ⁵

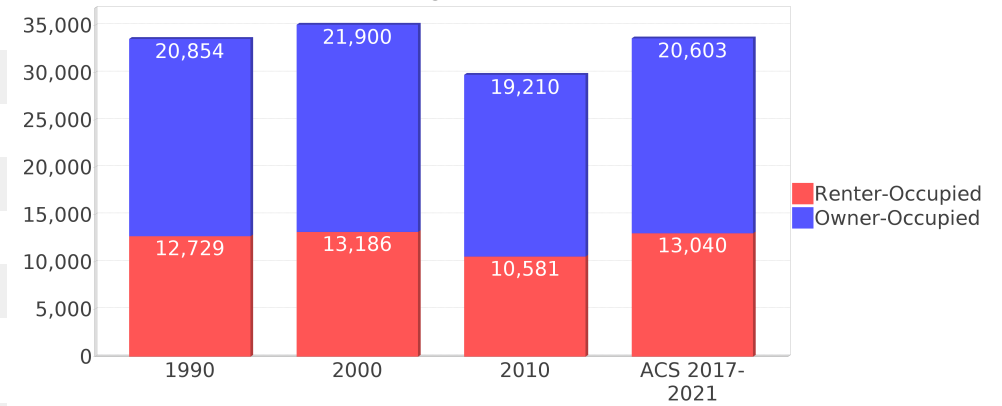
Age 5 and Over

Description	1990	2000	2010 ¹	ACS 2017-2021
Speaks English Well	2,285 (3.10%)	2,777 (3.64%)	3,301 (4.72%)	3,502 (4.46%)
Speaks English Not Well	NA (NA)	2,566 (3.36%)	2,127 (3.04%)	3,503 (4.46%)
Speaks English Not at All	NA (NA)	994 (1.30%)	1,206 (1.72%)	1,035 (1.32%)
Speaks English Not Well or Not at All	2,289 (3.11%)	3,560 (4.67%)	3,333 (4.77%)	4,538 (5.77%)
Speaks English Less than Very Well	NA (NA)	6,337 (8.31%)	6,634 (9.49%)	8,040 (10.23%)

Housing Trends - Monroe ⁵

Description	1990	2000	2010 ¹	ACS 2017-2021
Total	46,215	51,617	52,847	53,699
Units per Acre	0.07	0.076	0.078	0.08
Single-Family Units	17,113	28,415	32,311	33,551
Multi-Family Units	8,250	12,609	12,442	14,909
Mobile Home Units	6,791	9,814	7,919	5,050
Owner-Occupied Units	20,854	21,900	19,210	20,603
Renter-Occupied Units	12,729	13,186	10,581	13,040
Vacant Units	12,632	16,531	23,056	20,056
Median Housing Value	\$147,800	\$195,700	\$503,900	\$613,400
Occupied Housing Units w/No Vehicle	3,393 (10.10%)	3,137 (8.94%)	2,399 (8.05%)	2,412 (7.17%)
Median year householder moved into unit - Total	NA	NA	NA	2014
Median year householder moved into unit - Owner Occupied	NA	NA	NA	2010
Median year householder moved into unit - Renter Occupied	NA	NA	NA	2016
Abroad 1 year ago	NA	NA	NA	1,079
Different house in United States 1 year ago	NA	NA	NA	14,133
Same house 1 year ago	NA	NA	NA	66,146
Geographical Mobility in the Past Year - Total	NA	NA	NA	66,146

Housing Tenure - Monroe



Data Sources

ACS vs Census Data

(1) The 2010 Census data is represented by a combination of decennial and ACS (2006-2010) data. The General Population Trends, Race and Ethnicity Trends, Age Trends are entirely from decennial. The Income Trends, Language Trends are entirely from the ACS. The Housing Trends section is derived from both: Decennial (Total # Housing Units, Housing Units per Acre, Owner-Occupied Units, Renter-Occupied Units, Vacant Units); ACS (Single Family Units, Multi-family Units, Mobile Homes, Median Housing Value, Occupied Housing Units w/No Vehicle).

Area

(2) The geographic area of the community based on a user-defined community boundary or area of interest (AOI) boundary.

Jurisdiction

(3) Jurisdiction(s) includes local government boundaries that intersect the user-defined community or AOI boundary.

Goals, Values and History

(4) Information under the headings Goals and Values and History is entered manually by the user before the Sociocultural Data Report (SDR) is generated. This information is usually not available for communities with boundaries that are based on Census-defined places (i.e., not user-specified).

Demographic Data

(5) Demographic data reported under the headings General Population Trends, Race and Ethnicity Trends, Age Trends, Income Trends, Educational Attainment Trends, Language Trends, and Housing Trends is from the U.S. Decennial Census for 1990 and 2000 and the American Community Survey (ACS) 5-year estimates for 2006-2010 and ACS 2017-2021. The data was gathered at the block group level for user-defined communities, Census places, and AOIs, and at the county level for counties. Depending on the dataset, the data represents 100% counts (Census Summary File 1) or sample-based information (Census Summary File 3 or ACS). For more information about using demographic data, please see the training videos located here: <https://www.fdot.gov/environment/pubs/sce/sce1.shtm>.

About the Census Data

(6) The block group analysis for ETDM project analysis areas, user-defined communities, Census places, and AOI boundaries do not always correspond precisely to block group boundaries. To estimate the actual population more accurately, the SDR analysis adjusts the geographic area and data of affected block groups using the following methodology:

Delete overlapping census blocks with extremely low populations (2 or fewer people)
Remove the portion of the block group that lies outside of the analysis area
Recalculate the demographics assuming an equal area distribution of the population

Note that there may be areas where there is no population.

(7) Use caution when comparing the 100% count data (Decennial Census) to the sample-based data (ACS). In any given year, about one in 40 U.S. households will receive the ACS questionnaire. Over any five-year period, about one in eight households will receive the questionnaire, as compared to about one in six that received the long form questionnaire for the Decennial Census 2000. (Source: https://www.census.gov/content/dam/Census/programs-surveys/acs/news/10ACS_keyfacts.pdf) The U.S. Census Bureau provides help with this process: <https://www.census.gov/programs-surveys/acs/guidance/comparing-acs-data.html>

(8) Race and ethnicity are separate questions on the Census questionnaire. Individuals can report multiple race and ethnicity answers; therefore, numbers in the Race and Ethnicity portion of this report may add up to be greater than the total population. In addition, use caution when interpreting changes in race and ethnicity over time. Starting with the 2000 Decennial Census, respondents could select one or more race categories. Also in 2000, the placement of the question about Hispanic origin changed, helping to increase responsiveness to the Hispanic-origin question. Because of these and other changes, the 1990 data on race and ethnicity are not directly comparable with data from later censuses. (Source: <https://www.census.gov/library/publications/2001/dec/c2kbr01-01.html>)

(9) The "Minority" calculations use both the race and ethnicity responses from Census and ACS data. In this report, "Minority" refers to individuals who list a race other than White and/or list their ethnicity as Hispanic/Latino. In other words, people who are multi-racial, any single race other than White, or Hispanic/Latino of any race are considered minorities. We use the following formula: $MINORITY = TOTALPOP - WHITE_NH$ where TOTALPOP is the Total Population and WHITE_NH is the population with a race of White alone and an ethnicity of Not Hispanic or Latino. Translating this to the field names used in the census ACS source data, the formula looks like this: $MINORITY = B01003_E001 - B03002_E003$. (Note, the WHITE_NH population is not reported separately in this report.)

(10) Disability data is not included in the 2010 Decennial Census or the 2006-2010 ACS. This data is available in the ACS 2017-2021 ACS. Because of changes made to the Census and ACS questions between 1990 and ACS, disability variables should not be compared from year to year. For example: 1) with the 1990 data, the disabilities are listed as a "work disability" while this distinction is not made with 2000 or ACS data; 2) the ACS data includes the institutionalized population (e.g. persons in prisons and group homes) while this population is not included in 1990 or 2000; and 3) the age groupings changed over the years.

(11) The category Bachelor's Degree or Higher under the heading Educational Attainment Trends is a subset of the category High School Graduate or Higher.

(12) Income of households. This includes the income of the householder and all other individuals 15 years old and over in the household, whether they are related to the householder or not. Because many households consist of only one person, average household income is usually less than average family income.

(13) Income of families. In compiling statistics on family income, the incomes of all members 15 years old and over related to the householder are summed and treated as a single amount.

(14) Age trends. The median age for 1990 is not available.

Land Use Data

(15) The Land Use information Indicates acreages and percentages for the generalized land use types used to group parcel-specific, existing land use assigned by the county property appraiser office according to the Florida Department of Revenue land use codes.

Community Facilities Data

- (16) Assisted Rental Housing Units - Identifies multifamily rental developments that receive funding assistance under federal, state, and local government programs to offer affordable housing as reported by the Shimberg Center for Housing Studies, University of Florida.
- (17) Mobile Home Parks - Identifies approved or acknowledged mobile home parks reported by the Florida Department of Business and Professional Regulation and Florida Department of Health.
- (18) Migrant Camps - Identifies migrant labor camp facilities inspected by the Florida Department of Health.
- (19) Group Care Facilities - Identifies group care facilities inspected by the Florida Department of Health.
- (20) Community Center and Fraternal Association Facilities - Identifies facilities reported by multiple sources.
- (21) Law Enforcement Correctional Facilities - Identifies facilities reported by multiple sources.
- (22) Cultural Centers - Identifies cultural centers including organizations, buildings, or complexes that promote culture and arts (e.g., aquariums and zoological facilities; arboreta and botanical gardens; dinner theaters; drive-ins; historical places and services; libraries; motion picture theaters; museums and art galleries; performing arts centers; performing arts theaters; planetariums; studios and art galleries; and theater producers stage facilities) reported by multiple sources.
- (23) Fire Department and Rescue Station Facilities - Identifies facilities reported by multiple sources.
- (24) Government Buildings - Identifies local, state, and federal government buildings reported by multiple sources.
- (25) Health Care Facilities - Identifies health care facilities including abortion clinics, dialysis clinics, medical doctors, nursing homes, osteopaths, state laboratories/clinics, and surgicenters/walk-in clinics reported by the Florida Department of Health.
- (26) Hospital Facilities - Identifies hospital facilities reported by multiple sources.
- (27) Law Enforcement Facilities - Identifies law enforcement facilities reported by multiple sources.
- (28) Parks and Recreational Facilities - Identifies parks and recreational facilities reported by multiple sources.
- (29) Religious Center Facilities - Identifies religious centers including churches, temples, synagogues, mosques, chapels, centers, and other types of religious facilities reported by multiple sources.
- (30) Private and Public Schools - Identifies private and public schools reported by multiple sources.
- (31) Social Service Centers - Identifies social service centers reported by multiple sources.
- (32) Veteran Organizations and Facilities

County Data Sources

ACS vs Census Data

(1) The 2010 Census data is represented by a combination of decennial and ACS (2006-2010) data. The General Population Trends, Race and Ethnicity Trends, Age Trends are entirely from decennial. The Income Trends, Language Trends are entirely from the ACS. The Housing Trends section is derived from both: Decennial (Total # Housing Units, Housing Units per Acre, Owner-Occupied Units, Renter-Occupied Units, Vacant Units); ACS (Single Family Units, Multi-family Units, Mobile Homes, Median Housing Value, Occupied Housing Units w/No Vehicle).

About the Census Data

(34) Use caution when comparing the 100% count data (Decennial Census) to the sample-based data (ACS). In any given year, about one in 40 U.S. households will receive the ACS questionnaire. Over any five-year period, about one in eight households will receive the questionnaire, as compared to about one in six that received the long form questionnaire for the Decennial Census 2000. (Source: https://www.census.gov/content/dam/Census/programs-surveys/acs/news/10ACS_keyfacts.pdf) The U.S. Census Bureau provides help with this process: <https://www.census.gov/programs-surveys/acs/guidance/comparing-acs-data.html>

(35) Race and ethnicity are separate questions on the Census questionnaire. Individuals can report multiple race and ethnicity answers; therefore, numbers in the Race and Ethnicity portion of this report may add up to be greater than the total population. In addition, use caution when interpreting changes in race and ethnicity over time. Starting with the 2000 Decennial Census, respondents could select one or more race categories. Also in 2000, the placement of the question about Hispanic origin changed, helping to increase responsiveness to the Hispanic-origin question. Because of these and other changes, the 1990 data on race and ethnicity are not directly comparable with data from later censuses. (Source: <https://www.census.gov/library/publications/2001/dec/c2kbr01-01.html>)

(36) The "Minority" calculations use both the race and ethnicity responses from Census and ACS data. In this report, "Minority" refers to individuals who list a race other than White and/or list their ethnicity as Hispanic/Latino. In other words, people who are multi-racial, any single race other than White, or Hispanic/Latino of any race are considered minorities. We use the following formula: $MINORITY = TOTALPOP - WHITE_NH$ where TOTALPOP is the Total Population and WHITE_NH is the population with a race of White alone and an ethnicity of Not Hispanic or Latino. Translating this to the field names used in the census ACS source data, the formula looks like this: $MINORITY = B01003_E001 - B03002_E003$. (Note, the WHITE_NH population is not reported separately in this report.)

(37) Disability data is not included in the 2010 Decennial Census or the 2006-2010 ACS. This data is available in the ACS 2017-2021 ACS. Because of changes made to the Census and ACS questions between 1990 and ACS, disability variables should not be compared from year to year. For example: 1) with the 1990 data, the disabilities are listed as a "work disability" while this distinction is not made with 2000 or ACS data; 2) the ACS data includes the institutionalized population (e.g. persons in prisons and group homes) while this population is not included in 1990 or 2000; and 3) the age groupings changed over the years.

(38) The category Bachelor's Degree or Higher under the heading Educational Attainment Trends is a subset of the category High School Graduate or Higher.

Metadata

- (39) Community and Fraternal Centers https://etdmpub.flc-etat.org/meta/gc_communitycenter.xml
- (40) Correctional Facilities in Florida https://etdmpub.flc-etat.org/meta/gc_correctional.xml
- (41) Cultural Centers in Florida https://etdmpub.flc-etat.org/meta/gc_culturecenter.xml
- (42) Fire Department and Rescue Station Facilities in Florida https://etdmpub.flc-etat.org/meta/gc_firestat.xml
- (43) Local, State, and Federal Government Buildings in Florida https://etdmpub.flc-etat.org/meta/gc_govbuild.xml
- (44) Florida Health Care Facilities https://etdmpub.flc-etat.org/meta/gc_health.xml
- (45) Hospital Facilities in Florida https://etdmpub.flc-etat.org/meta/gc_hospitals.xml
- (46) Law Enforcement Facilities in Florida https://etdmpub.flc-etat.org/meta/gc_lawenforce.xml
- (47) Florida Parks and Recreational Facilities https://etdmpub.flc-etat.org/meta/gc_parks.xml
- (48) Religious Centers https://etdmpub.flc-etat.org/meta/gc_religion.xml
- (49) Florida Public and Private Schools https://etdmpub.flc-etat.org/meta/gc_schools.xml
- (50) Social Service Centers https://etdmpub.flc-etat.org/meta/gc_socialservice.xml
- (51) Assisted Rental Housing Units in Florida https://etdmpub.flc-etat.org/meta/gc_assisted_housing.xml
- (52) Group Care Facilities <https://etdmpub.flc-etat.org/meta/groupcare.xml>
- (53) Mobile Home Parks in Florida https://etdmpub.flc-etat.org/meta/gc_mobilehomes.xml
- (54) Migrant Camps in Florida <https://etdmpub.flc-etat.org/meta/migrant.xml>
- (55) Veteran Organizations and Facilities https://etdmpub.flc-etat.org/meta/gc_veterans.xml
- (56) Generalized Land Use https://etdmpub.flc-etat.org/meta/lu_gen.xml
- (57) Census Block Groups in Florida https://etdmpub.flc-etat.org/meta/e2_cenacs_cci.xml
- (58) 1990 Census Block Groups in Florida https://etdmpub.flc-etat.org/meta/e2_cenblkgrp_1990_cci.xml
- (59) 2000 Census Block Groups in Florida https://etdmpub.flc-etat.org/meta/e2_cenblkgrp_2000_cci.xml
- (60) 2010 Census Block Groups in Florida https://etdmpub.flc-etat.org/meta/e2_cenblkgrp_2010_cci.xml