

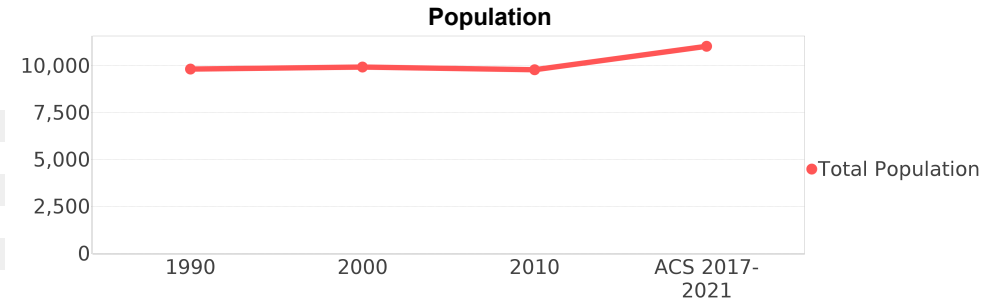
## Westview (CDP)

**Area:** [2](#) 3.186 square miles  
**Jurisdiction - Cities:** [3](#) Hialeah, Opa-locka, North Miami  
**Jurisdiction - Counties:** [3](#) Miami-Dade



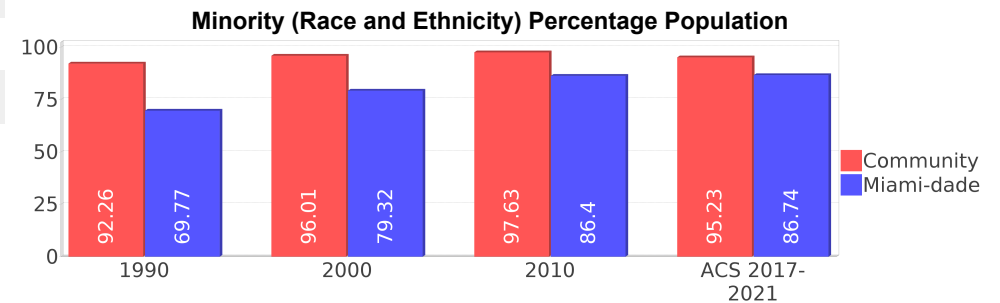
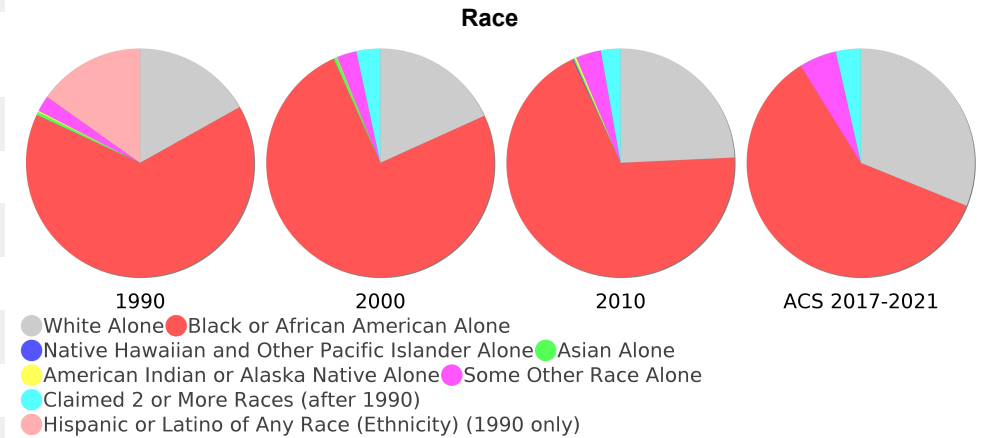
## General Population Trends

Description	1990	2000	2010 <sup>1</sup>	ACS 2017-2021
Total Population	9,824	9,934	9,787	11,038
Total Households	2,878	2,969	3,093	3,618
Average Persons per Acre	13.27	13.18	13.63	14.62
Average Persons per Household	3.48	3.58	3.56	3.39
Average Persons per Family	4.01	4.07	3.76	3.92
Males	4,613	4,620	4,624	5,156
Females	5,210	5,314	5,162	5,881



## Race and Ethnicity Trends <sup>5, 8, 9</sup>

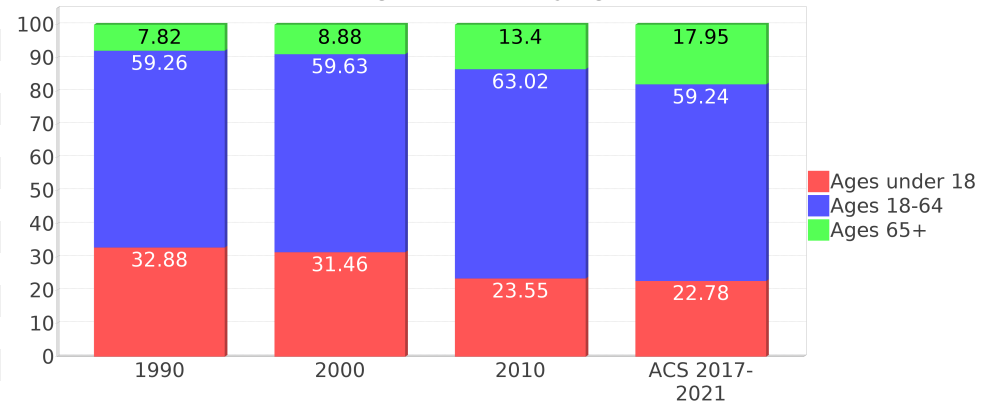
Description	1990	2000	2010 <sup>1</sup>	ACS 2017-2021
White Alone	1,954 (19.89%)	1,812 (18.24%)	2,374 (24.26%)	3,435 (31.12%)
Black or African American Alone	7,529 (76.64%)	7,454 (75.04%)	6,733 (68.80%)	6,625 (60.02%)
Native Hawaiian and Other Pacific Islander Alone	2 (0.02%)	0 (0.00%)	12 (0.12%)	0 (0.00%)
Asian Alone	49 (0.50%)	41 (0.41%)	18 (0.18%)	0 (0.00%)
American Indian or Alaska Native Alone	25 (0.25%)	12 (0.12%)	26 (0.27%)	0 (0.00%)
Some Other Race Alone	261 (2.66%)	276 (2.78%)	348 (3.56%)	586 (5.31%)
Claimed 2 or More Races	NA (NA)	337 (3.39%)	273 (2.79%)	390 (3.53%)
Hispanic or Latino of Any Race (Ethnicity)	1,759 (17.91%)	2,155 (21.69%)	2,942 (30.06%)	4,071 (36.88%)
Not Hispanic or Latino (Ethnicity)	8,065 (82.09%)	7,779 (78.31%)	6,845 (69.94%)	6,967 (63.12%)
Minority (Race and Ethnicity)	9,064 (92.26%)	9,538 (96.01%)	9,555 (97.63%)	10,511 (95.23%)



## Age Trends <sup>5</sup>

Description	1990	2000	2010 <sup>1</sup>	ACS 2017-2021
Under Age 5	9.04%	7.75%	6.75%	3.28%
Ages 5-17	23.84%	23.71%	16.80%	19.50%
Ages 18-21	7.09%	6.51%	6.52%	3.44%
Ages 22-29	11.40%	11.11%	11.79%	11.70%
Ages 30-39	15.84%	13.93%	11.70%	12.68%
Ages 40-49	13.14%	13.38%	12.59%	12.27%
Ages 50-64	11.79%	14.70%	20.43%	19.15%
Age 65 and Over	7.82%	8.88%	13.40%	17.95%
-Ages 65-74	5.19%	5.09%	8.26%	12.69%
-Ages 75-84	2.11%	2.84%	4.08%	4.67%
-Age 85 and Over	0.51%	0.94%	1.04%	0.58%
Median Age	NA	29	35	37

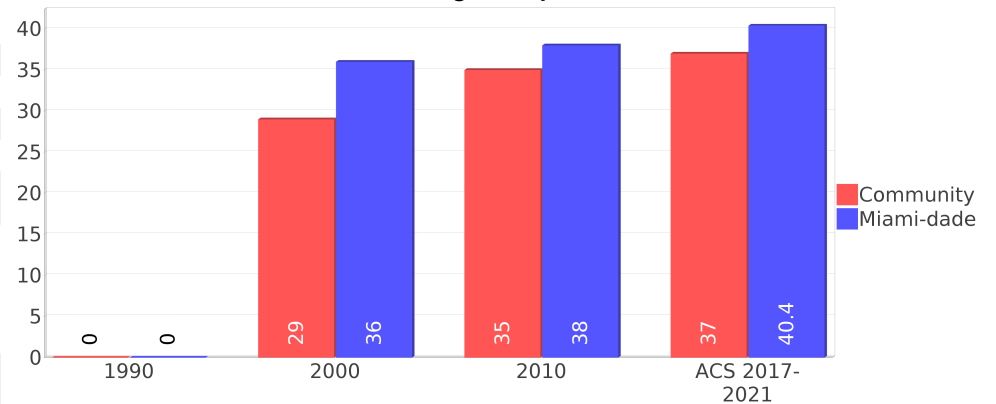
Percentage Population by Age Group



## Income Trends <sup>12, 13, 5</sup>

Description	1990	2000	2010 <sup>1</sup>	ACS 2017-2021
Median Household Income	\$25,599	\$26,970	\$34,656	\$40,196
Median Family Income	\$26,204	\$27,188	\$39,184	\$45,028
Population below Poverty Level	19.70%	27.54%	19.33%	24.97%
Households below Poverty Level	20.81%	26.91%	19.53%	26.29%
Households with Public Assistance Income	11.74%	11.11%	1.13%	9.31%

Median Age Comparison



## Disability Trends <sup>10</sup>

See the Data Sources section below for an explanation about the differences in disability data among the various years.

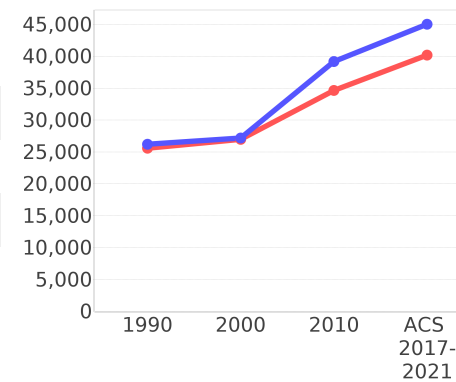
Description	1990	2000	2010 <sup>1</sup>	ACS 2017-2021
Population 16 To 64 Years with a disability	414 (6.00%)	2212 (24.14%)	(NA)	(NA)
Population 20 To 64 Years with a disability	(NA)	(NA)	(NA)	765 (12.07%)

## Educational Attainment Trends <sup>11, 5</sup>

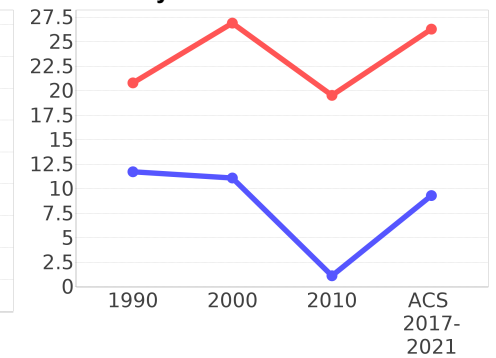
Age 25 and Over

Description	1990	2000	2010 <sup>1</sup>	ACS 2017-2021
Less than 9th Grade	1,059 (19.52%)	918 (16.03%)	721 (12.63%)	718 (9.69%)
9th to 12th Grade, No Diploma	1,331 (24.53%)	1,360 (23.76%)	1,070 (18.74%)	811 (10.95%)
High School Graduate or Higher	3,034 (55.93%)	3,447 (60.21%)	3,918 (68.62%)	5,879 (79.35%)
Bachelor's Degree or Higher	395 (7.28%)	500 (8.73%)	552 (9.67%)	1,204 (16.25%)

Income Trends



Poverty and Public Assistance



## Language Trends <sup>5</sup>

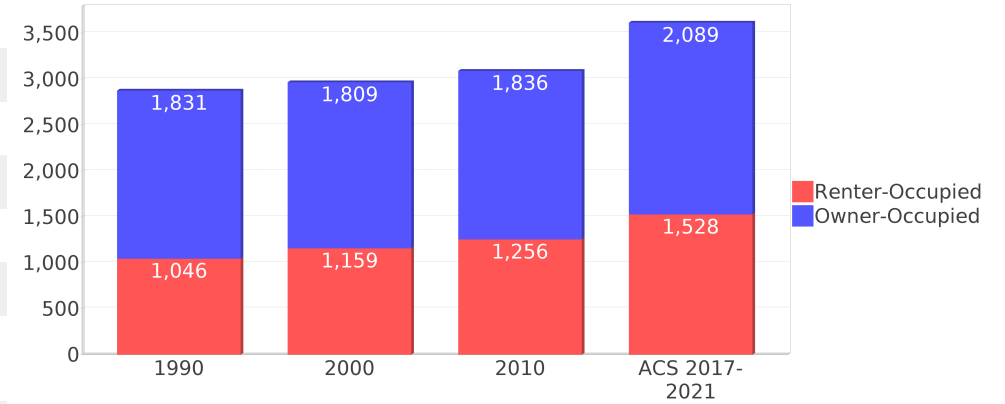
Age 5 and Over

Description	1990	2000	2010 <sup>1</sup>	ACS 2017-2021
Speaks English Well	908 (10.37%)	637 (6.95%)	709 (8.25%)	858 (8.04%)
Speaks English Not Well	NA (NA)	696 (7.60%)	716 (8.34%)	1,497 (14.02%)
Speaks English Not at All	NA (NA)	353 (3.85%)	435 (5.06%)	453 (4.24%)
Speaks English Not Well or Not at All	762 (8.70%)	1,049 (11.45%)	1,151 (13.40%)	1,950 (18.27%)
Speaks English Less than Very Well	NA (NA)	1,687 (18.41%)	1,861 (21.67%)	2,808 (26.30%)

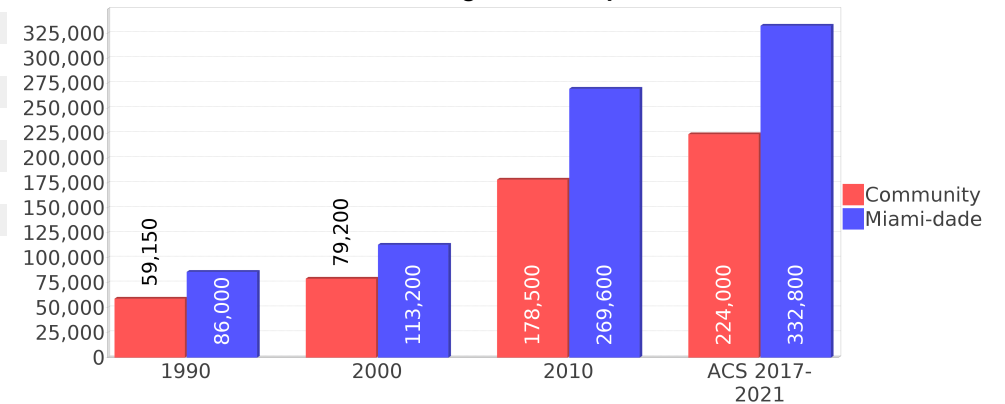
## Housing Trends <sup>5</sup>

Description	1990	2000	2010 <sup>1</sup>	ACS 2017-2021
Total	3,086	3,189	3,439	3,803
Units per Acre	3.14	3.05	3.50	3.39
Single-Family Units	2,106	2,272	2,200	2,348
Multi-Family Units	717	878	1,084	1,395
Mobile Home Units	4	38	0	60
Owner-Occupied Units	1,831	1,809	1,836	2,089
Renter-Occupied Units	1,046	1,159	1,256	1,528
Vacant Units	208	220	346	185
Median Housing Value	\$59,150	\$79,200	\$178,500	\$224,000
Occupied Housing Units w/No Vehicle	462 (16.05%)	557 (18.76%)	300 (9.70%)	684 (18.91%)

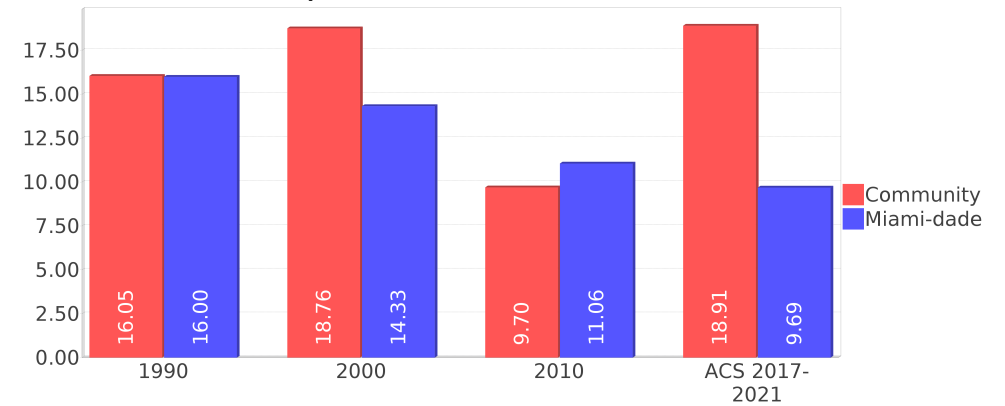
## Housing Tenure



## Median Housing Value Comparison



## Occupied Units With No Vehicles Available



## Geographic Mobility

Description	ACS 2017-2021
Median year householder moved into unit - Total	2010
Median year householder moved into unit - Owner Occupied	2004
Median year householder moved into unit - Renter Occupied	2013
Abroad 1 year ago	0
Different house in United States 1 year ago	462
Same house 1 year ago	10,547
Geographical Mobility in the Past Year - Total	11,010

## Computers and Internet

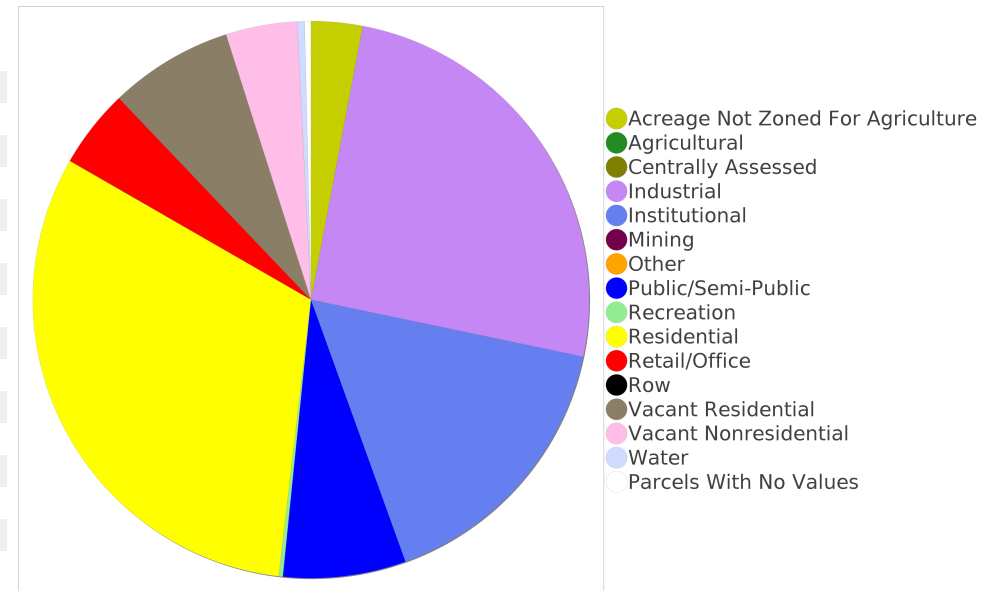
Description	ACS 2017-2021
Total Households Types of Computers in HH	3,618
Households with 1 or more device	3,410
Households with no computer	208
Total Households Presence and Types of Internet Subscriptions	3,618
Households with an internet subscription	2,395
Households with internet access without a subscription	347
Households with no internet access	875

## Household Languages

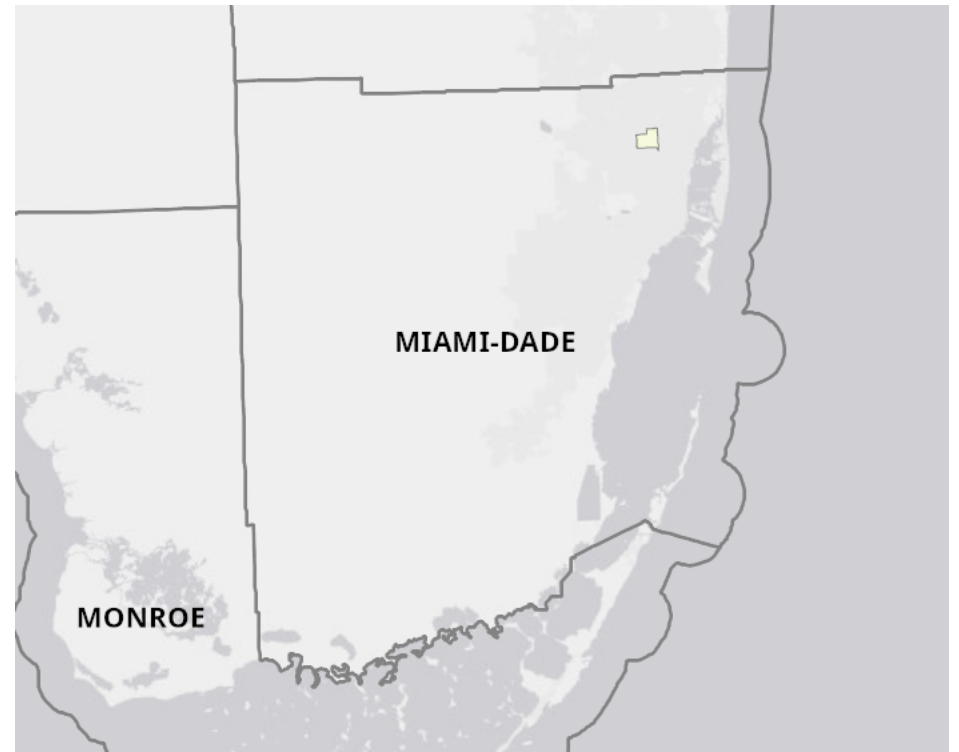
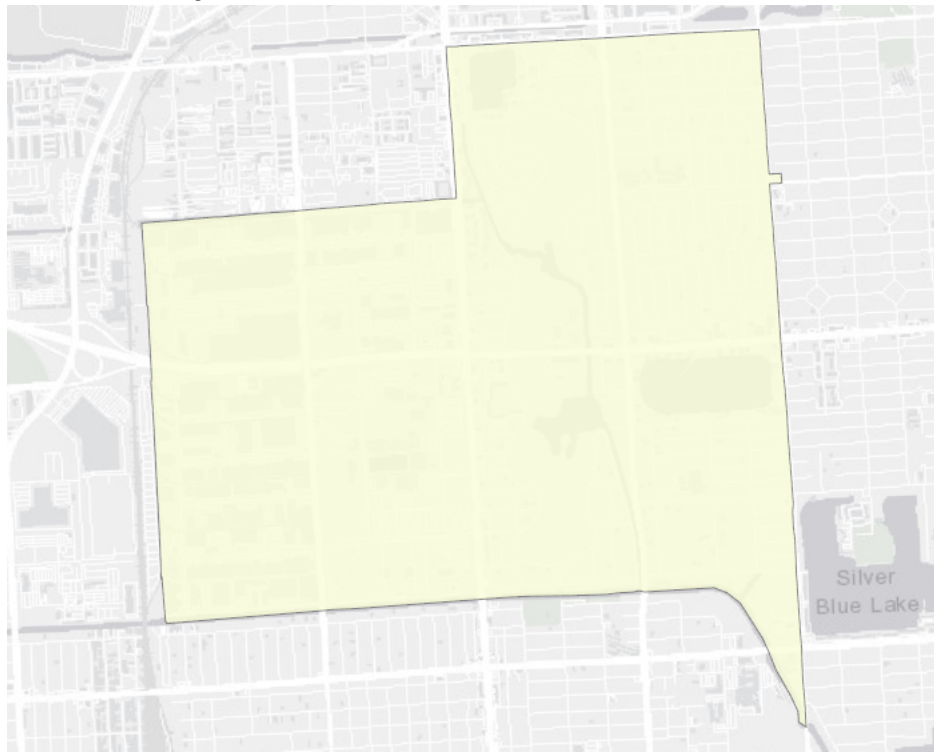
Description	ACS 2017-2021
Total Households by Household Language	3,618
Household Not Limited English Speaking Status	2,643
Spanish: Limited English speaking household	872
Indo-European languages: Limited English speaking household	102
Asian and Pacific Island languages: Limited English speaking household	0
Other languages: Limited English speaking household	0

## Existing Land Use <sup>15</sup>

Land Use Type	Acres	Percentage
Acreage Not Zoned For Agriculture	49	2.40%
Agricultural	<0.5	<0.02%
Centrally Assessed	<0.5	<0.02%
Industrial	415	20.35%
Institutional	266	13.04%
Mining	0	0.00%
Other	0	0.00%
Public/Semi-Public	117	5.74%
Recreation	4	0.20%
Residential	516	25.30%
Retail/Office	75	3.68%
Row	0	0.00%
Vacant Residential	118	5.79%
Vacant Nonresidential	68	3.33%
Water	7	0.34%
Parcels With No Values	6	0.29%



## Location Maps



## Community Facilities

The community facilities information below is useful in a variety of ways for environmental evaluations. These community resources should be evaluated for potential sociocultural effects, such as accessibility and relocation potential. The facility types may indicate the types of population groups present in the project study area. Facility staff and leaders can be sources of community information such as who uses the facility and how it is used. Additionally, community facilities are potential public meeting venues.

### Assisted Rental Housing Units

Facility Name	Address	Zip Code
WESTVIEW GARDEN	2351 N W 119TH STREET	33167
LAKEVIEW	11505-11755 NW 22ND AVENUE	33167
PALM LAKE	2575 NW 115TH STREET	33167
KINGS TERRACE	12555 N.W. 27TH AVENUE	33167

### Cultural Centers

Facility Name	Address	Zip Code
MIAMI DADE COLLEGE - NORTH CAMPUS LIBRARY	11380 NW 27TH AVE	33167
GALLERY NORTH MIAMI DADE COLLEGE NORTH CAMPUS	11380 NW 27TH AVE	33167

### Fire Department and Rescue Station Facilities

Facility Name	Address	Zip Code
MIAMI-DADE COUNTY FIRE DEPARTMENT AND RESCUE STATION 26 (OPA-LOCKA)	3190 NW 119TH ST	33167

### Law Enforcement Facilities

Facility Name	Address	Zip Code
MIAMI-DADE COLLEGE POLICE DEPARTMENT - NORTH CAMPUS	11380 NW 27TH AVE (RM 1175)	33167

### Religious Centers

Facility Name	Address	Zip Code
MGC WORSHIP CENTER	10900 NW 19TH AVENUE	33167
VILLAGES OF NEW BEGINNING	2398 NW 119 ST	33167
PEACE MISSIONARY BAPTIST CHURCH	11500 NORTHWEST 17TH AVENUE	33167
WESTVIEW BAPTIST CHURCH	13301 NW 24TH AVENUE	33167
BETHEL APOSTOLIC TEMPLE	1855 NW 119TH STREET	33167
NORTHSIDE SEVENTH DAY ADVENTIST CHURCH	1769 NORTHWEST 119TH STREET	33167
CROWN OF THORNS IMPACT MINISTRIES INC.	2151 NW 119 ST	33167
IGLESIA DE DIOS PENTECOSTAL	1751 NW 115TH STREET	33167
NEW HARVEST MISSIONARY BAPTIST	12145 NW 27TH AVENUE	33167
JERUSALEM II FRENCH SDA CHURCH	2601 NW 123RD STREET	33167
OPEN BIBLE COMMUNITY CHURCH	2610 NW 119TH STREET	33167
NEW BIRTH BAPTIST CHURCH	2300 NORTHWEST 135TH STREET	33167
CRUSADE MISSION AME CHURCH	2121 NW 119TH STREET	33167

## Public Schools

Facility Name	Address	Zip Code
SCHOOL FOR ADVANCED STUDIES NORTH	11380 NW 27TH AVE # 1111	33167
MIAMI-DADE COUNTY SCHOOL DISTRICT - FACILITIES OPERATIONS, MAINTENANCE	12525 NW 28 AVE	33167
MIAMI DADE COLLEGE - NORTH CAMPUS	11380 NW 27TH AVE	33167
HENRY E.S. REEVES K-8 CENTER	2005 NW 111TH ST	33167
MIAMI-DADE COUNTY SCHOOL DISTRICT - JOHN H. SCHEE TRANSPORTATION	2755 NW 122 ST	33167
CARRIE P. MEEK/WESTVIEW K-8 CENTER	2101 NW 127TH ST	33167
MIAMI AGRICULTURAL SCHOOL	10200 NW 17TH AVENUE	33147
PHOENIX ACADEMY OF EXCELLENCE NORTH	13301 NW 24TH AVE	33167
THE SEED SCHOOL OF MIAMI	1901 NW 127 ST	33167

## Group Care Facilities

Facility Name	Address	Zip Code
HENRY S. REEVES ELEM.	2005 NW 111 STREET	33167
WESTVIEW PLEASANT LIVING INC.	2140 NW 126TH STREET	33167
ACADEMY OF KNOWLEDGE PREPARATORY SCHOOL	2240 NW 119 STREET	33167
CARRIE P. MEEK/WESTVIEW K-8 CENTER	2101 NW 127 STREET	33167
SCHOOL FOR ADVANCED STUDIES - MDCC - NORTH CAMPUS	11380 NW 27 AVENUE, ROOM 1111	33167
ALTON'S ACLF	2090 NW 115 STREET	33167
DR. JOHN A. MCKINNEY CHRISTIAN ACADEMY	2300 NW 135 STREET	33167
CARRIE P. MEEK/WESTVIEW MLC	1901 NW 127 STREET	33167

## Block Groups

The following Census Block Groups were used to calculate demographics for this report.

### 1990 Census Block Groups

120250005033, 120250004053, 120250004073, 120250004041, 120250004015, 120250004067, 120250004065, 120250004066, 120250004074, 120250004033, 120250004054, 120250005032, 120250004043, 120250004082, 120250004044, 120250004042

### 2000 Census Block Groups

120860005033, 120860004073, 120860005032, 120860004043, 120860009011, 120860004074, 120860004041, 120860004044, 120860004066, 120860004054, 120860004033, 120860004053, 120860004015, 120860004042, 120860004082, 120860004067, 120860004065

### 2010 Census Block Groups

120860004121, 120860004124, 120860004053, 120860004042, 120860004102, 120860004092, 120860004082, 120860004103, 120860005032, 120860004041, 120860004033, 120860004043, 120860004133, 120860005033, 120860005034, 120860004113, 120860009011, 120860004054

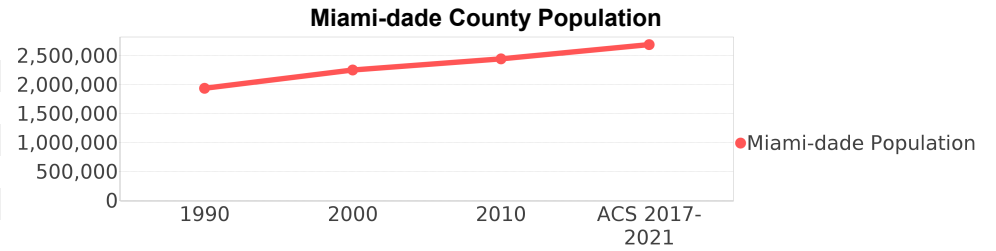
### Census Block Groups

120860004113, 120860005082, 120860004202, 120860004102, 120860004201, 120860005092, 120860004164, 120860004192, 120860004173, 120860004152, 120860004191, 120860005081, 120860004082, 120860004193, 120860004132, 120860004151, 120860004092, 120860004103, 120860004114, 120860004054, 120860004053

# Miami-dade County Demographic Profile

## General Population Trends - Miami-dade <sup>5</sup>

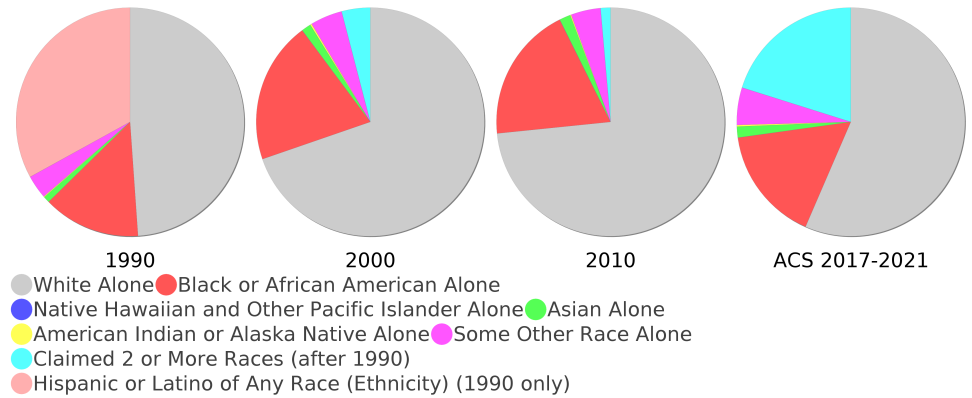
Description	1990	2000	2010 <sup>1</sup>	ACS 2017-2021
Total Population	1,937,094	2,253,362	2,445,374	2,690,113
Total Households	692,355	776,774	827,556	936,351
Average Persons per Acre	1.528	1.774	1.925	2.12
Average Persons per Household	2.798	2.84	3.00	2.83
Average Persons per Family	3.413	3.488	3.591	3.54
Males	928,411	1,086,558	1,182,784	1,316,112



## Race and Ethnicity Trends - Miami-dade <sup>5, 8, 9</sup>

Description	1990	2000	2010 <sup>1</sup>	ACS 2017-2021
White Alone	1,413,015 (72.95%)	1,570,990 (69.72%)	1,794,730 (73.39%)	1,520,002 (56.50%)
Black or African American Alone	397,993 (20.55%)	452,333 (20.07%)	470,326 (19.23%)	438,019 (16.28%)
Native Hawaiian and Other Pacific Islander Alone	(NA)	605 (0.03%)	649 (0.03%)	531 (0.02%)
Asian Alone	25,869 (1.34%)	30,692 (1.36%)	38,813 (1.59%)	41,628 (1.55%)
American Indian or Alaska Native Alone	3,066 (0.16%)	4,841 (0.21%)	3,572 (0.15%)	6,065 (0.23%)
Some Other Race Alone	96,713 (4.99%)	102,436 (4.55%)	102,938 (4.21%)	142,274 (5.29%)
Claimed 2 or More Races	(NA)	91,465 (4.06%)	34,346 (1.40%)	541,594 (20.13%)
Hispanic or Latino of Any Race (Ethnicity)	953,407 (49.22%)	1,291,681 (57.32%)	1,565,410 (64.02%)	1,842,914 (68.51%)
Not Hispanic or Latino (Ethnicity)	983,687 (50.78%)	961,681 (42.68%)	879,964 (35.98%)	847,199 (31.49%)
Minority (Race and Ethnicity)	1,351,487 (69.77%)	1,787,468 (79.32%)	2,112,884 (86.40%)	2,333,441 (86.74%)

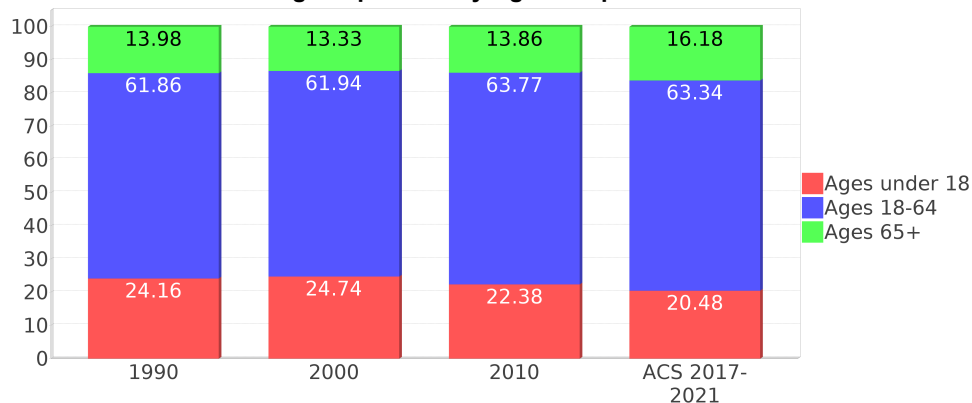
Miami-dade County Race



## Age Trends - Miami-dade <sup>5</sup>

Description	1990	2000	2010 <sup>1</sup>	ACS 2017-2021
Under Age 5	7.21%	6.43%	6.20%	5.69%
Ages 5-17	16.95%	18.31%	16.18%	14.79%
Ages 18-21	5.60%	5.24%	5.83%	4.69%
Ages 22-29	13.10%	10.97%	10.98%	10.34%
Ages 30-39	16.06%	16.33%	14.14%	13.90%
Ages 40-49	12.47%	14.49%	15.67%	14.28%
Ages 50-64	14.63%	14.90%	17.15%	20.13%
Age 65 and Over	13.98%	13.33%	13.86%	16.18%
-Ages 65-74	7.54%	7.23%	7.34%	8.84%
-Ages 75-84	4.88%	4.41%	4.71%	5.01%
-Age 85 and Over	1.55%	1.69%	1.81%	2.32%
Median Age	NA	36	38	40.4

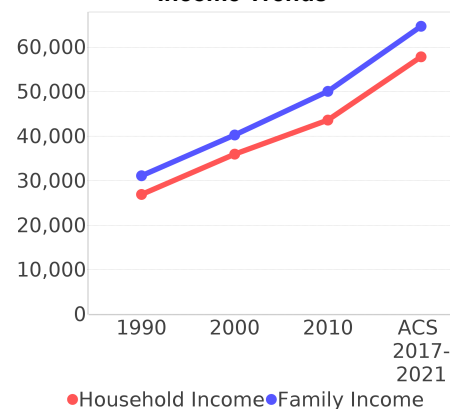
Percentage Population by Age Group - Miami-dade



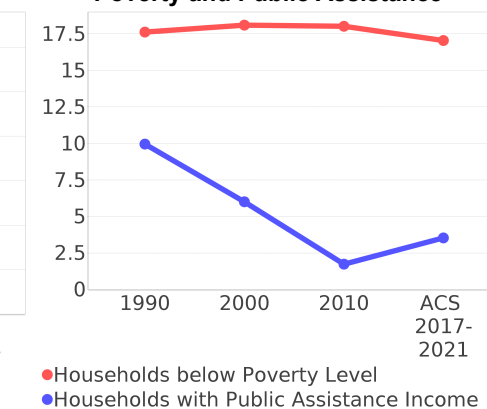
## Income Trends - Miami-dade <sup>5</sup>

Description	1990	2000	2010 <sup>1</sup>	ACS 2017-2021
Median Household Income	\$26,909	\$35,966	\$43,605	\$57,815
Median Family Income	\$31,113	\$40,260	\$50,065	\$64,690
Population below Poverty Level	17.94%	17.97%	17.18%	15.68%
Households below Poverty Level	17.62%	18.10%	18.02%	17.05%
Households with Public Assistance Income	9.96%	6.01%	1.74%	3.53%

Income Trends



Poverty and Public Assistance



## Disability Trends - Miami-dade <sup>10</sup>

See the Data Sources section below for an explanation about the differences in disability data among the various years.

Description	1990	2000	2010 <sup>1</sup>	ACS 2017-2021
Population 16 To 64 Years with a disability	78,949 (5.28%)	324,062 (15.60%)	NA (NA)	NA (NA)
Population 20 To 64 Years with a disability	NA (NA)	NA (NA)	NA (NA)	108,936 (6.71%)

## Educational Attainment Trends - Miami-dade <sup>11, 5</sup>

Age 25 and Over

Description	1990	2000	2010 <sup>1</sup>	ACS 2017-2021
Less than 9th Grade	228,426 (17.83%)	219,066 (14.68%)	202,413 (12.23%)	166,277 (8.67%)
9th to 12th Grade, No Diploma	219,856 (17.16%)	260,287 (17.45%)	178,335 (10.77%)	169,424 (8.84%)
High School Graduate or Higher	833,013 (65.01%)	1,012,436 (67.87%)	1,274,809 (77.00%)	1,581,464 (82.49%)
Bachelor's Degree or Higher	240,460 (18.77%)	323,399 (21.68%)	434,574 (26.25%)	608,670 (31.75%)

## Language Trends - Miami-dade <sup>5</sup>

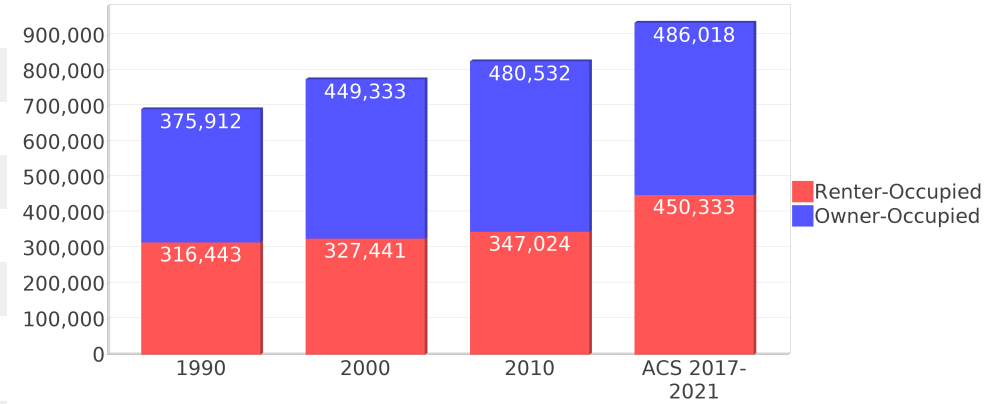
Age 5 and Over

Description	1990	2000	2010 <sup>1</sup>	ACS 2017-2021
Speaks English Well	221,943 (12.34%)	285,783 (13.55%)	302,397 (13.18%)	341,625 (13.47%)
Speaks English Not Well	NA (NA)	261,782 (12.42%)	294,777 (12.85%)	320,339 (12.63%)
Speaks English Not at All	NA (NA)	184,249 (8.74%)	217,650 (9.49%)	200,485 (7.90%)
Speaks English Not Well or Not at All	341,005 (18.96%)	446,031 (21.15%)	512,427 (22.34%)	520,824 (20.53%)
Speaks English Less than Very Well	NA (NA)	731,814 (34.71%)	814,824 (35.52%)	862,449 (33.99%)

## Housing Trends - Miami-dade <sup>5</sup>

Description	1990	2000	2010 <sup>1</sup>	ACS 2017-2021
Total	771,288	852,278	980,580	1,064,991
Units per Acre	0.608	0.671	0.772	0.84
Single-Family Units	365,600	448,569	508,364	527,957
Multi-Family Units	301,870	387,550	457,465	522,689
Mobile Home Units	15,359	15,338	14,234	13,865
Owner-Occupied Units	375,912	449,333	480,532	486,018
Renter-Occupied Units	316,443	327,441	347,024	450,333
Vacant Units	78,933	75,504	153,024	128,640
Median Housing Value	\$86,000	\$113,200	\$269,600	\$332,800
Occupied Housing Units w/No Vehicle	110,809 (16.00%)	111,323 (14.33%)	91,558 (11.06%)	90,753 (9.69%)
Median year householder moved into unit - Total	NA	NA	NA	2013
Median year householder moved into unit - Owner Occupied	NA	NA	NA	2006
Median year householder moved into unit - Renter Occupied	NA	NA	NA	2016
Abroad 1 year ago	NA	NA	NA	38,698
Different house in United States 1 year ago	NA	NA	NA	277,854
Same house 1 year ago	NA	NA	NA	2,345,253
Geographical Mobility in the Past Year - Total	NA	NA	NA	2,345,253

## Housing Tenure - Miami-dade



# Data Sources

## ACS vs Census Data

(1) The 2010 Census data is represented by a combination of decennial and ACS (2006-2010) data. The General Population Trends, Race and Ethnicity Trends, Age Trends are entirely from decennial. The Income Trends, Language Trends are entirely from the ACS. The Housing Trends section is derived from both: Decennial (Total # Housing Units, Housing Units per Acre, Owner-Occupied Units, Renter-Occupied Units, Vacant Units); ACS (Single Family Units, Multi-family Units, Mobile Homes, Median Housing Value, Occupied Housing Units w/No Vehicle).

## Area

(2) The geographic area of the community based on a user-defined community boundary or area of interest (AOI) boundary.

## Jurisdiction

(3) Jurisdiction(s) includes local government boundaries that intersect the user-defined community or AOI boundary.

## Goals, Values and History

(4) Information under the headings Goals and Values and History is entered manually by the user before the Sociocultural Data Report (SDR) is generated. This information is usually not available for communities with boundaries that are based on Census-defined places (i.e., not user-specified).

## Demographic Data

(5) Demographic data reported under the headings General Population Trends, Race and Ethnicity Trends, Age Trends, Income Trends, Educational Attainment Trends, Language Trends, and Housing Trends is from the U.S. Decennial Census for 1990 and 2000 and the American Community Survey (ACS) 5-year estimates for 2006-2010 and ACS 2017-2021. The data was gathered at the block group level for user-defined communities, Census places, and AOIs, and at the county level for counties. Depending on the dataset, the data represents 100% counts (Census Summary File 1) or sample-based information (Census Summary File 3 or ACS). For more information about using demographic data, please see the training videos located here: <https://www.fdot.gov/environment/pubs/sce/sce1.shtm>.

## About the Census Data

(6) The block group analysis for ETDM project analysis areas, user-defined communities, Census places, and AOI boundaries do not always correspond precisely to block group boundaries. To estimate the actual population more accurately, the SDR analysis adjusts the geographic area and data of affected block groups using the following methodology:

Delete overlapping census blocks with extremely low populations (2 or fewer people)  
Remove the portion of the block group that lies outside of the analysis area  
Recalculate the demographics assuming an equal area distribution of the population

Note that there may be areas where there is no population.

(7) Use caution when comparing the 100% count data (Decennial Census) to the sample-based data (ACS). In any given year, about one in 40 U.S. households will receive the ACS questionnaire. Over any five-year period, about one in eight households will receive the questionnaire, as compared to about one in six that received the long form questionnaire for the Decennial Census 2000. (Source: [https://www.census.gov/content/dam/Census/programs-surveys/acs/news/10ACS\\_keyfacts.pdf](https://www.census.gov/content/dam/Census/programs-surveys/acs/news/10ACS_keyfacts.pdf)) The U.S. Census Bureau provides help with this process: <https://www.census.gov/programs-surveys/acs/guidance/comparing-acs-data.html>

(8) Race and ethnicity are separate questions on the Census questionnaire. Individuals can report multiple race and ethnicity answers; therefore, numbers in the Race and Ethnicity portion of this report may add up to be greater than the total population. In addition, use caution when interpreting changes in race and ethnicity over time. Starting with the 2000 Decennial Census, respondents could select one or more race categories. Also in 2000, the placement of the question about Hispanic origin changed, helping to increase responsiveness to the Hispanic-origin question. Because of these and other changes, the 1990 data on race and ethnicity are not directly comparable with data from later censuses. (Source: <https://www.census.gov/library/publications/2001/dec/c2kbr01-01.html>)

(9) The "Minority" calculations use both the race and ethnicity responses from Census and ACS data. In this report, "Minority" refers to individuals who list a race other than White and/or list their ethnicity as Hispanic/Latino. In other words, people who are multi-racial, any single race other than White, or Hispanic/Latino of any race are considered minorities. We use the following formula:  $MINORITY = TOTALPOP - WHITE\_NH$  where TOTALPOP is the Total Population and WHITE\_NH is the population with a race of White alone and an ethnicity of Not Hispanic or Latino. Translating this to the field names used in the census ACS source data, the formula looks like this:  $MINORITY = B01003\_E001 - B03002\_E003$ . (Note, the WHITE\_NH population is not reported separately in this report.)

(10) Disability data is not included in the 2010 Decennial Census or the 2006-2010 ACS. This data is available in the ACS 2017-2021 ACS. Because of changes made to the Census and ACS questions between 1990 and ACS, disability variables should not be compared from year to year. For example: 1) with the 1990 data, the disabilities are listed as a "work disability" while this distinction is not made with 2000 or ACS data; 2) the ACS data includes the institutionalized population (e.g. persons in prisons and group homes) while this population is not included in 1990 or 2000; and 3) the age groupings changed over the years.

(11) The category Bachelor's Degree or Higher under the heading Educational Attainment Trends is a subset of the category High School Graduate or Higher.

(12) Income of households. This includes the income of the householder and all other individuals 15 years old and over in the household, whether they are related to the householder or not. Because many households consist of only one person, average household income is usually less than average family income.

(13) Income of families. In compiling statistics on family income, the incomes of all members 15 years old and over related to the householder are summed and treated as a single amount.

(14) Age trends. The median age for 1990 is not available.

## Land Use Data

(15) The Land Use information Indicates acreages and percentages for the generalized land use types used to group parcel-specific, existing land use assigned by the county property appraiser office according to the Florida Department of Revenue land use codes.

## Community Facilities Data

- (16) Assisted Rental Housing Units - Identifies multifamily rental developments that receive funding assistance under federal, state, and local government programs to offer affordable housing as reported by the Shimberg Center for Housing Studies, University of Florida.
- (17) Mobile Home Parks - Identifies approved or acknowledged mobile home parks reported by the Florida Department of Business and Professional Regulation and Florida Department of Health.
- (18) Migrant Camps - Identifies migrant labor camp facilities inspected by the Florida Department of Health.
- (19) Group Care Facilities - Identifies group care facilities inspected by the Florida Department of Health.
- (20) Community Center and Fraternal Association Facilities - Identifies facilities reported by multiple sources.
- (21) Law Enforcement Correctional Facilities - Identifies facilities reported by multiple sources.
- (22) Cultural Centers - Identifies cultural centers including organizations, buildings, or complexes that promote culture and arts (e.g., aquariums and zoological facilities; arboreta and botanical gardens; dinner theaters; drive-ins; historical places and services; libraries; motion picture theaters; museums and art galleries; performing arts centers; performing arts theaters; planetariums; studios and art galleries; and theater producers stage facilities) reported by multiple sources.
- (23) Fire Department and Rescue Station Facilities - Identifies facilities reported by multiple sources.
- (24) Government Buildings - Identifies local, state, and federal government buildings reported by multiple sources.
- (25) Health Care Facilities - Identifies health care facilities including abortion clinics, dialysis clinics, medical doctors, nursing homes, osteopaths, state laboratories/clinics, and surgicenters/walk-in clinics reported by the Florida Department of Health.
- (26) Hospital Facilities - Identifies hospital facilities reported by multiple sources.
- (27) Law Enforcement Facilities - Identifies law enforcement facilities reported by multiple sources.
- (28) Parks and Recreational Facilities - Identifies parks and recreational facilities reported by multiple sources.
- (29) Religious Center Facilities - Identifies religious centers including churches, temples, synagogues, mosques, chapels, centers, and other types of religious facilities reported by multiple sources.
- (30) Private and Public Schools - Identifies private and public schools reported by multiple sources.
- (31) Social Service Centers - Identifies social service centers reported by multiple sources.
- (32) Veteran Organizations and Facilities

# County Data Sources

## ACS vs Census Data

(1) The 2010 Census data is represented by a combination of decennial and ACS (2006-2010) data. The General Population Trends, Race and Ethnicity Trends, Age Trends are entirely from decennial. The Income Trends, Language Trends are entirely from the ACS. The Housing Trends section is derived from both: Decennial (Total # Housing Units, Housing Units per Acre, Owner-Occupied Units, Renter-Occupied Units, Vacant Units); ACS (Single Family Units, Multi-family Units, Mobile Homes, Median Housing Value, Occupied Housing Units w/No Vehicle).

## About the Census Data

(34) Use caution when comparing the 100% count data (Decennial Census) to the sample-based data (ACS). In any given year, about one in 40 U.S. households will receive the ACS questionnaire. Over any five-year period, about one in eight households will receive the questionnaire, as compared to about one in six that received the long form questionnaire for the Decennial Census 2000. (Source: [https://www.census.gov/content/dam/Census/programs-surveys/acs/news/10ACS\\_keyfacts.pdf](https://www.census.gov/content/dam/Census/programs-surveys/acs/news/10ACS_keyfacts.pdf)) The U.S. Census Bureau provides help with this process: <https://www.census.gov/programs-surveys/acs/guidance/comparing-acs-data.html>

(35) Race and ethnicity are separate questions on the Census questionnaire. Individuals can report multiple race and ethnicity answers; therefore, numbers in the Race and Ethnicity portion of this report may add up to be greater than the total population. In addition, use caution when interpreting changes in race and ethnicity over time. Starting with the 2000 Decennial Census, respondents could select one or more race categories. Also in 2000, the placement of the question about Hispanic origin changed, helping to increase responsiveness to the Hispanic-origin question. Because of these and other changes, the 1990 data on race and ethnicity are not directly comparable with data from later censuses. (Source: <https://www.census.gov/library/publications/2001/dec/c2kbr01-01.html>)

(36) The "Minority" calculations use both the race and ethnicity responses from Census and ACS data. In this report, "Minority" refers to individuals who list a race other than White and/or list their ethnicity as Hispanic/Latino. In other words, people who are multi-racial, any single race other than White, or Hispanic/Latino of any race are considered minorities. We use the following formula:  $MINORITY = TOTALPOP - WHITE\_NH$  where TOTALPOP is the Total Population and WHITE\_NH is the population with a race of White alone and an ethnicity of Not Hispanic or Latino. Translating this to the field names used in the census ACS source data, the formula looks like this:  $MINORITY = B01003\_E001 - B03002\_E003$ . (Note, the WHITE\_NH population is not reported separately in this report.)

(37) Disability data is not included in the 2010 Decennial Census or the 2006-2010 ACS. This data is available in the ACS 2017-2021 ACS. Because of changes made to the Census and ACS questions between 1990 and ACS, disability variables should not be compared from year to year. For example: 1) with the 1990 data, the disabilities are listed as a "work disability" while this distinction is not made with 2000 or ACS data; 2) the ACS data includes the institutionalized population (e.g. persons in prisons and group homes) while this population is not included in 1990 or 2000; and 3) the age groupings changed over the years.

(38) The category Bachelor's Degree or Higher under the heading Educational Attainment Trends is a subset of the category High School Graduate or Higher.

## Metadata

- (39) Community and Fraternal Centers [https://etdmpub.florida-estat.org/meta/gc\\_communitycenter.xml](https://etdmpub.florida-estat.org/meta/gc_communitycenter.xml)
- (40) Correctional Facilities in Florida [https://etdmpub.florida-estat.org/meta/gc\\_correctional.xml](https://etdmpub.florida-estat.org/meta/gc_correctional.xml)
- (41) Cultural Centers in Florida [https://etdmpub.florida-estat.org/meta/gc\\_culturecenter.xml](https://etdmpub.florida-estat.org/meta/gc_culturecenter.xml)
- (42) Fire Department and Rescue Station Facilities in Florida [https://etdmpub.florida-estat.org/meta/gc\\_firestat.xml](https://etdmpub.florida-estat.org/meta/gc_firestat.xml)
- (43) Local, State, and Federal Government Buildings in Florida [https://etdmpub.florida-estat.org/meta/gc\\_govbuild.xml](https://etdmpub.florida-estat.org/meta/gc_govbuild.xml)
- (44) Florida Health Care Facilities [https://etdmpub.florida-estat.org/meta/gc\\_health.xml](https://etdmpub.florida-estat.org/meta/gc_health.xml)
- (45) Hospital Facilities in Florida [https://etdmpub.florida-estat.org/meta/gc\\_hospitals.xml](https://etdmpub.florida-estat.org/meta/gc_hospitals.xml)
- (46) Law Enforcement Facilities in Florida [https://etdmpub.florida-estat.org/meta/gc\\_lawenforce.xml](https://etdmpub.florida-estat.org/meta/gc_lawenforce.xml)
- (47) Florida Parks and Recreational Facilities [https://etdmpub.florida-estat.org/meta/gc\\_parks.xml](https://etdmpub.florida-estat.org/meta/gc_parks.xml)
- (48) Religious Centers [https://etdmpub.florida-estat.org/meta/gc\\_religion.xml](https://etdmpub.florida-estat.org/meta/gc_religion.xml)
- (49) Florida Public and Private Schools [https://etdmpub.florida-estat.org/meta/gc\\_schools.xml](https://etdmpub.florida-estat.org/meta/gc_schools.xml)
- (50) Social Service Centers [https://etdmpub.florida-estat.org/meta/gc\\_socialservice.xml](https://etdmpub.florida-estat.org/meta/gc_socialservice.xml)
- (51) Assisted Rental Housing Units in Florida [https://etdmpub.florida-estat.org/meta/gc\\_assisted\\_housing.xml](https://etdmpub.florida-estat.org/meta/gc_assisted_housing.xml)
- (52) Group Care Facilities <https://etdmpub.florida-estat.org/meta/groupcare.xml>
- (53) Mobile Home Parks in Florida [https://etdmpub.florida-estat.org/meta/gc\\_mobilehomes.xml](https://etdmpub.florida-estat.org/meta/gc_mobilehomes.xml)
- (54) Migrant Camps in Florida <https://etdmpub.florida-estat.org/meta/migrant.xml>
- (55) Veteran Organizations and Facilities [https://etdmpub.florida-estat.org/meta/gc\\_veterans.xml](https://etdmpub.florida-estat.org/meta/gc_veterans.xml)
- (56) Generalized Land Use [https://etdmpub.florida-estat.org/meta/lu\\_gen.xml](https://etdmpub.florida-estat.org/meta/lu_gen.xml)
- (57) Census Block Groups in Florida [https://etdmpub.florida-estat.org/meta/e2\\_cenacs\\_cci.xml](https://etdmpub.florida-estat.org/meta/e2_cenacs_cci.xml)
- (58) 1990 Census Block Groups in Florida [https://etdmpub.florida-estat.org/meta/e2\\_cenblkgrp\\_1990\\_cci.xml](https://etdmpub.florida-estat.org/meta/e2_cenblkgrp_1990_cci.xml)
- (59) 2000 Census Block Groups in Florida [https://etdmpub.florida-estat.org/meta/e2\\_cenblkgrp\\_2000\\_cci.xml](https://etdmpub.florida-estat.org/meta/e2_cenblkgrp_2000_cci.xml)
- (60) 2010 Census Block Groups in Florida [https://etdmpub.florida-estat.org/meta/e2\\_cenblkgrp\\_2010\\_cci.xml](https://etdmpub.florida-estat.org/meta/e2_cenblkgrp_2010_cci.xml)