

# Sociocultural Data Report

## Woodgate Ii Homeowners Association (Clearwater)

**Area:** 0.099 square miles  
**Jurisdiction(s):** **Cities:** Clearwater  
**Counties:** Pinellas

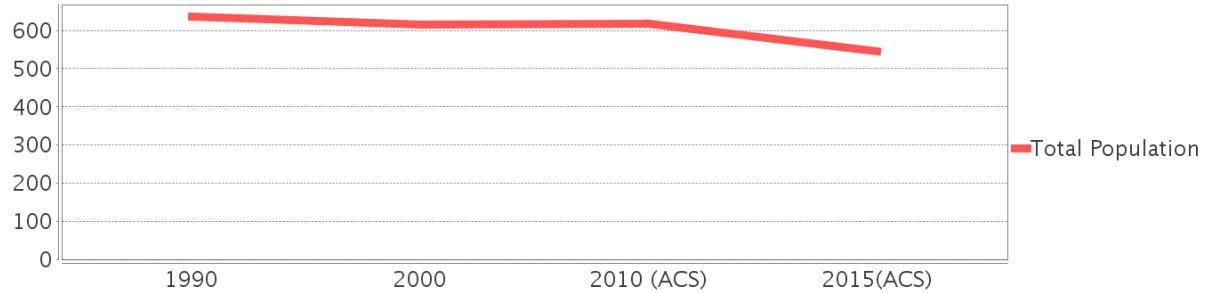
### General Population Trends

Description	1990	2000	2010 (ACS)	2015 (ACS)
Total Population	636	615	617	546
Total Households	257	280	269	211
Average Persons per Acre	10.20	9.68	13.64	15.40
Average Persons per Household	2.47	2.27	2.00	2.10
Average Persons per Family	3.10	2.72	2.50	2.95
Males	297	272	283	249
Females	339	342	334	297

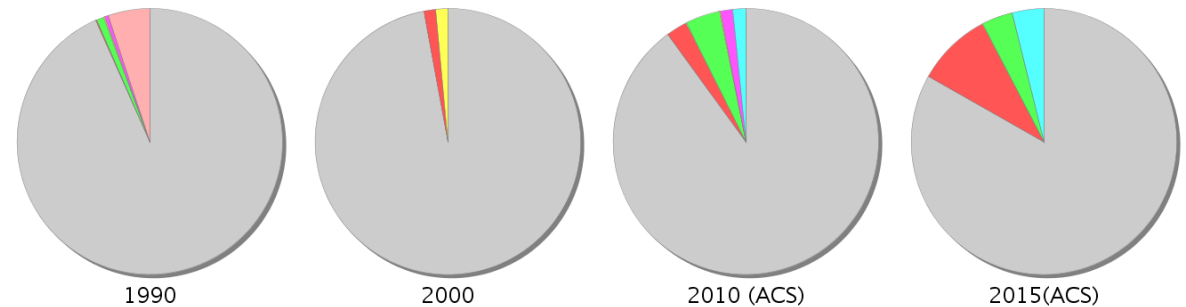
### Race and Ethnicity Trends

Description	1990	2000	2010 (ACS)	2015 (ACS)
White Alone	625 (98.27%)	596 (96.91%)	555 (89.95%)	454 (83.15%)
Black or African American Alone	1 (0.16%)	9 (1.46%)	16 (2.59%)	50 (9.16%)
Native Hawaiian and Other Pacific Islander Alone	0 (0.00%)	0 (0.00%)	0 (0.00%)	0 (0.00%)
Asian Alone	6 (0.94%)	0 (0.00%)	26 (4.21%)	21 (3.85%)
American Indian or Alaska Native Alone	1 (0.16%)	9 (1.46%)	1 (0.16%)	0 (0.00%)
Some Other Race Alone	3 (0.47%)	0 (0.00%)	9 (1.46%)	0 (0.00%)
Claimed 2 or More Races	NA (NA)	0 (0.00%)	10 (1.62%)	21 (3.85%)
Hispanic or Latino of Any Race	34 (5.35%)	0 (0.00%)	42 (6.81%)	44 (8.06%)
Not Hispanic or Latino	602 (94.65%)	615 (100.00%)	575 (93.19%)	502 (91.94%)
Minority	41 (6.45%)	18 (2.93%)	93 (15.07%)	136 (24.91%)

Population

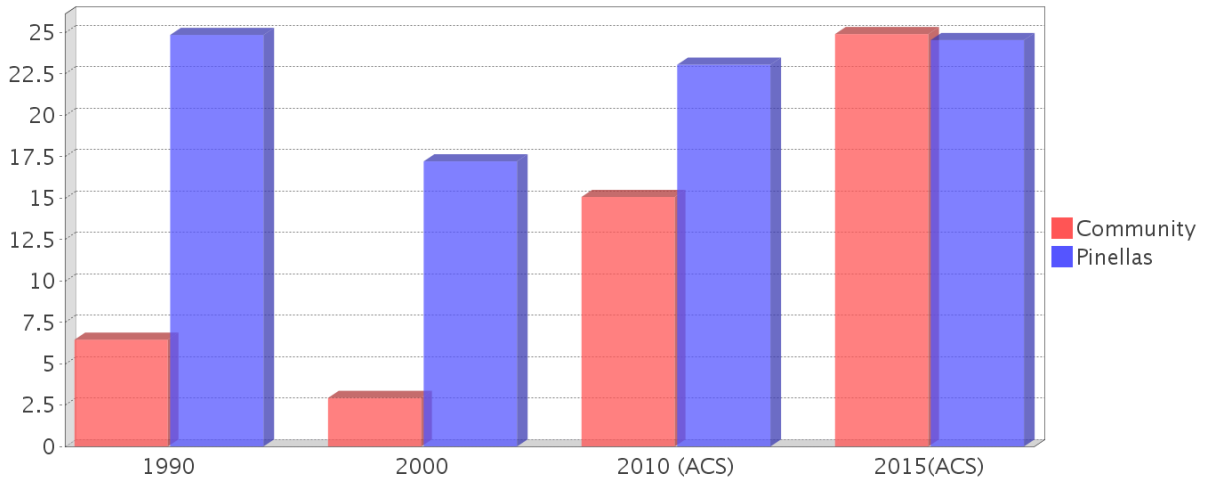


Race



● White Alone ● Black or African American Alone ● Native Hawaiian and Other Pacific Islander Alone  
 ● Asian Alone ● American Indian or Alaska Native Alone ● Some Other Race Alone  
 ● Claimed 2 or More Races (after 1990) ● Hispanic or Latino of Any Race (1990 only)

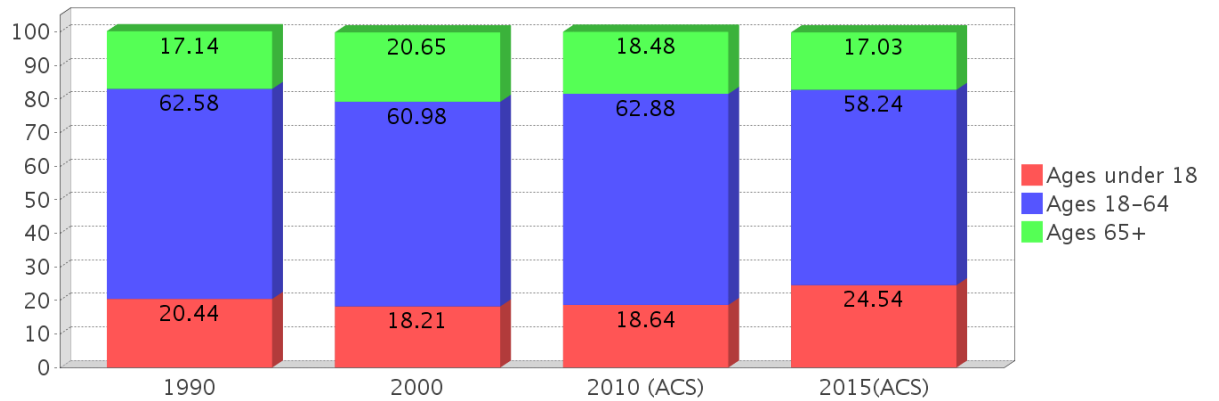
Minority Percentage Population



### Age Trends

Description	1990	2000	2010 (ACS)	2015(ACS)
Under Age 5	3.93%	4.72%	5.19%	14.47%
Ages 5-17	16.51%	13.50%	13.45%	10.07%
Ages 18-21	5.82%	2.44%	4.05%	8.79%
Ages 22-29	9.91%	8.62%	7.94%	5.86%
Ages 30-39	12.58%	18.70%	13.13%	13.00%
Ages 40-49	18.40%	16.26%	13.61%	10.26%
Ages 50-64	15.88%	14.96%	24.15%	20.33%
Age 65 and Over	17.14%	20.65%	18.48%	17.03%
-Ages 65-74	11.32%	13.01%	8.59%	8.42%
-Ages 75-84	5.03%	6.83%	6.81%	5.13%
-Age 85 and Over	0.79%	0.81%	3.08%	3.48%
Median Age	NA	45	58	52

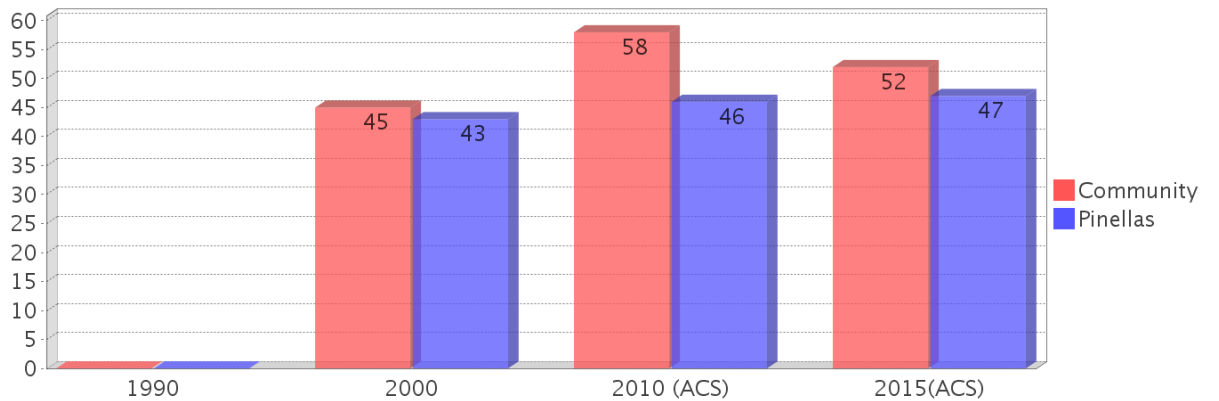
### Population by Age Group



### Income Trends

Description	1990	2000	2010 (ACS)	2015(ACS)
Median Household Income	\$36,372	\$46,050	\$39,752	\$47,403
Median Family Income	\$42,895	\$51,302	\$45,550	NA
Population below Poverty Level	1.89%	3.74%	3.08%	8.06%
Households below Poverty Level	4.67%	2.14%	1.49%	11.85%
Households with Public Assistance Income	7.39%	1.79%	1.49%	6.64%

### Median Age Comparison

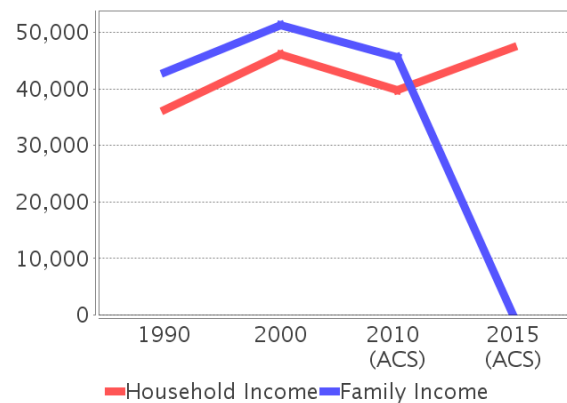


### Disability Trends

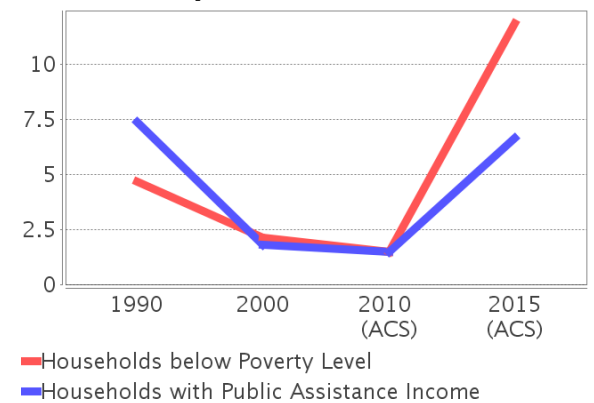
See the Data Sources section below for an explanation about the differences in disability data among the various years.

Description	1990	2000	2010 (ACS)	2015(ACS)
Population 16 To 64 Years with a disability	38 (7.14%)	82 (14.16%)	(NA)	(NA)
Population 20 To 64 Years with a disability	(NA)	(NA)	(NA)	9 (3.03%)

### Income Trends



### Poverty and Public Assistance



## Educational Attainment Trends

Age 25 and Over

Description	1990	2000	2010 (ACS)	2015(ACS)
Less than 9th Grade	12 (2.61%)	5 (1.06%)	24 (4.90%)	7 (1.99%)
9th to 12th Grade, No Diploma	63 (13.70%)	39 (8.30%)	26 (5.31%)	7 (1.99%)
High School Graduate or Higher	384 (83.48%)	427 (90.85%)	439 (89.59%)	339 (96.31%)
Bachelor's Degree or Higher	114 (24.78%)	89 (18.94%)	121 (24.69%)	117 (33.24%)

## Language Trends

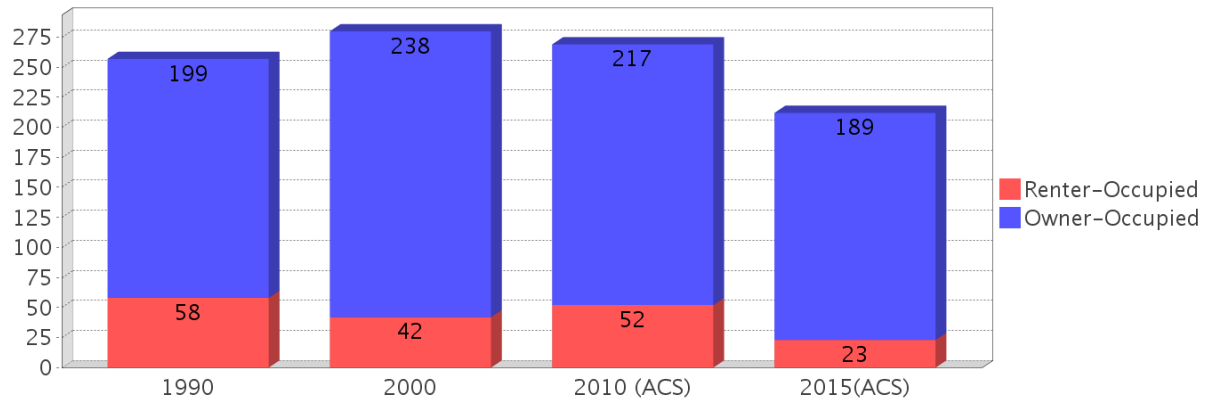
Age 5 and Over

Description	1990	2000	2010 (ACS)	2015(ACS)
Speaks English Well	11 (1.78%)	6 (1.02%)	15 (2.61%)	6 (1.28%)
Speaks English Not Well	NA	8 (1.37%)	1 (0.17%)	17 (3.64%)
Speaks English Not at All	NA (NA)	0 (0.00%)	0 (0.00%)	0 (0.00%)
Speaks English Not Well or Not at All	0 (0.00%)	8 (1.37%)	1 (0.17%)	17 (3.64%)

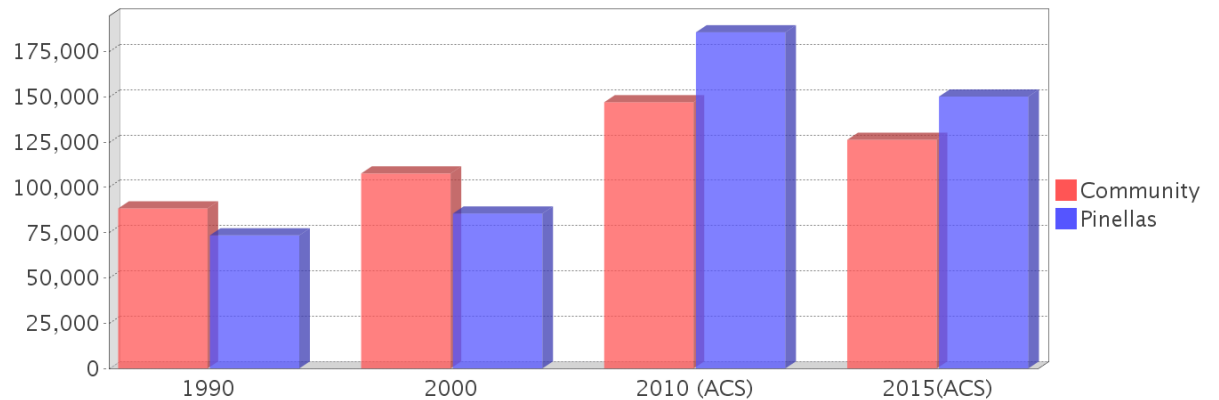
## Housing Trends

Description	1990	2000	2010 (ACS)	2015(ACS)
Total	290	320	312	249
Units per Acre	4.65	5.04	5.07	4.12
Single-Family Units	168	196	197	151
Multi-Family Units	86	124	191	98
Mobile Home Units	0	0	0	0
Owner-Occupied Units	199	238	217	189
Renter-Occupied Units	58	42	52	23
Vacant Units	33	41	43	38
Median Housing Value	\$88,400	\$107,700	\$147,050	\$126,300
Occupied Housing Units w/No Vehicle	15 (5.84%)	15 (5.38%)	2 (0.74%)	32 (15.17%)

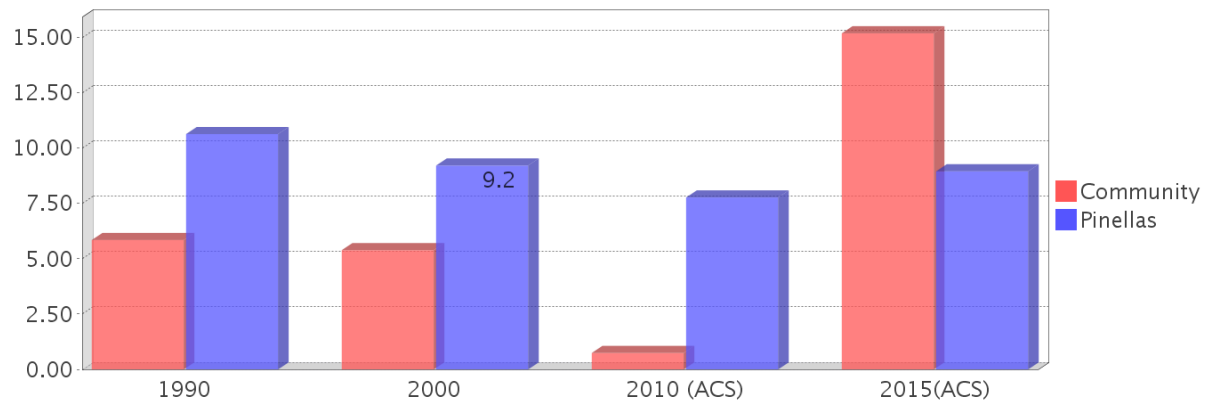
## Housing Tenure



## Median Housing Value Comparison

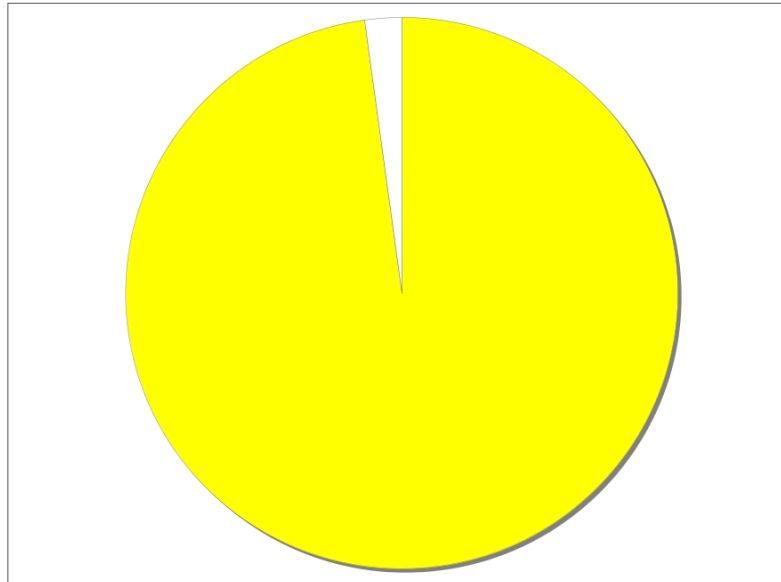


## Occupied Units With No Vehicles Available



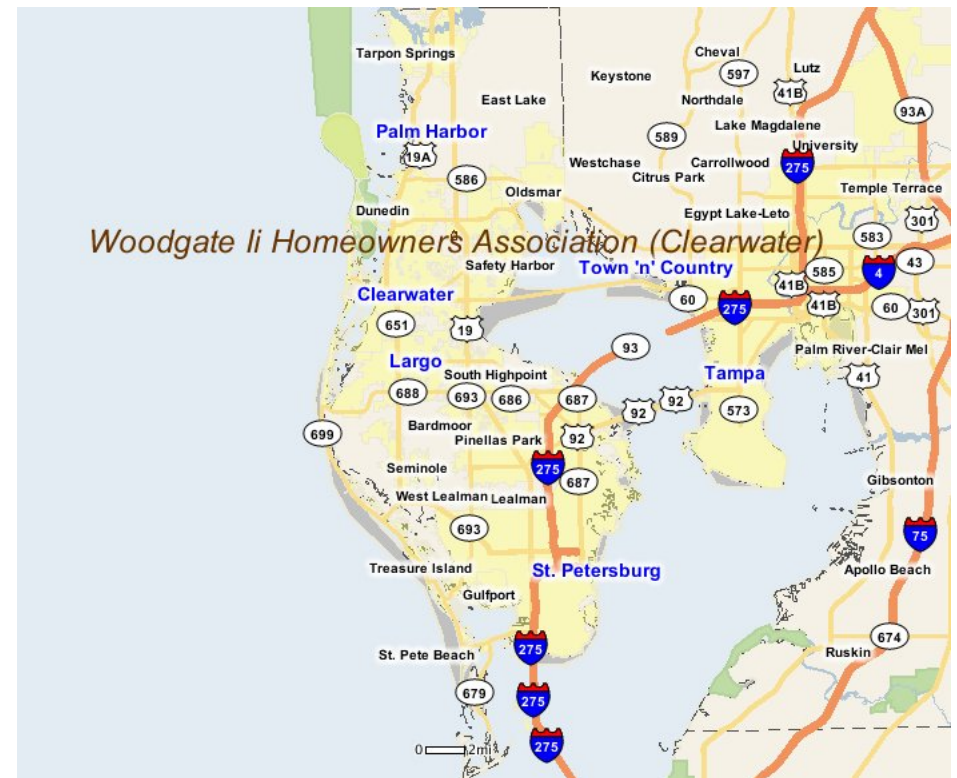
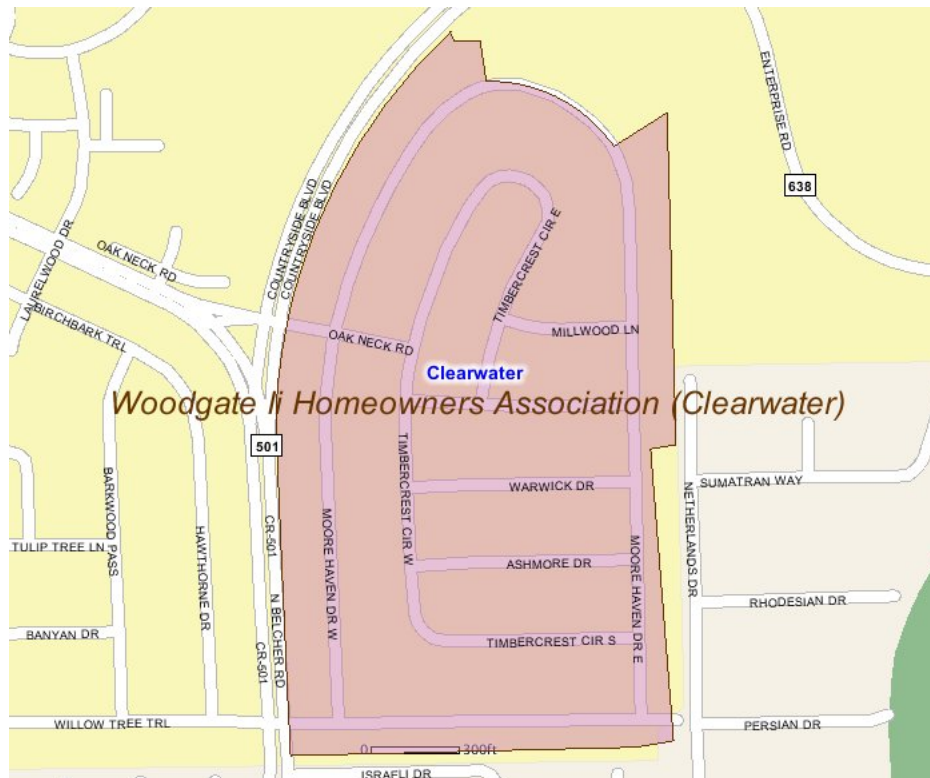
## Existing Land Use

Land Use Type	Acres	Percentage
Acreage Not Zoned For Agriculture	0	0.00%
Agricultural	0	0.00%
Centrally Assessed	0	0.00%
Industrial	0	0.00%
Institutional	0	0.00%
Mining	0	0.00%
Other	0	0.00%
Public/Semi-Public	0	0.00%
Recreation	0	0.00%
Residential	45	70.88%
Retail/Office	0	0.00%
Row	0	0.00%
Vacant Residential	0	0.00%
Vacant Nonresidential	0	0.00%
Water	0	0.00%
Parcels With No Values	1	1.58%



- Acreage Not Zoned For Agriculture
- Agricultural
- Centrally Assessed
- Industrial
- Institutional
- Mining
- Other
- Public/Semi-Public
- Recreation
- Residential
- Retail/Office
- Row
- Vacant Residential
- Vacant Nonresidential
- Water
- Parcels With No Values

## Location Maps



---

## Community Facilities

The community facilities information below is useful in a variety of ways for environmental evaluations. These community resources should be evaluated for potential sociocultural effects, such as accessibility and relocation potential. The facility types may indicate the types of population groups present in the project study area. Facility staff and leaders can be sources of community information such as who uses the facility and how it is used. Additionally, community facilities are potential public meeting venues.

### Community Boundaries (User defined)

#### Facility Name

Woodgate II Homeowners Association (Clearwater)

### US Census Places

#### Facility Name

Clearwater

---

## Block Groups

The following Census Block Groups were used to calculate demographics for this report.

### 1990 Census Block Groups

121030269051

### 2000 Census Block Groups

121030269051

### 2010 Census Block Groups

121030269133, 121030269131

### 2015 Census Block Groups

121030269133, 121030269131

---

## Data Sources

### Area

The geographic area of the community based on a user-specified community boundary or area of interest (AOI) boundary.

### Jurisdiction

Jurisdiction(s) includes local government boundaries that intersect the community or AOI boundary.

### Demographic Data

Demographic data reported under the headings General Population Trends, Race and Ethnicity Trends, Age Trends, Income Trends, Educational Attainment Trends, Language Trends, and Housing Trends is from the U.S. Decennial Census (1990, 2000) and the American Community Survey (ACS) 5-year estimates from 2006-2010 and 2011-2015. The data was gathered at the block group level for user-specified community boundaries and AOIs, and at the county level for counties. Depending on the dataset, the data represents 100% counts (Census Summary File 1) or sample-based information (Census Summary File 3 or ACS).

### About the Census Data:

User-specified community boundaries and AOIs do not always correspond precisely to block group boundaries. In these instances, adjustment of the geographic area and data for affected block groups is required to estimate the actual population. To improve the accuracy of such estimates in the SDR report, the census block group data was adjusted to exclude all census blocks with a population of two or fewer. These areas were eliminated from the corresponding years' block groups. Next, the portion of the block group that lies outside of the community or AOI boundary was removed. The demographics within each block group were then recalculated, assuming an equal area distribution of the population. Note that there may be areas where there is no population.

Use caution when comparing the 100% count data (Decennial Census) to the sample-based data (ACS). In any given year, about one in 40 or 2.5% of U.S. households will receive the ACS questionnaire. Over any five-year period, about one in eight households will receive the questionnaire, as compared to about one in six that received the long form questionnaire for the Decennial Census 2000. (Source: <http://mcdc.missouri.edu/pub/data/acs/Readme.shtml>) The U.S. Census Bureau provides help with this process:

[http://www.census.gov/acs/www/guidance\\_for\\_data\\_users/comparing\\_2015/](http://www.census.gov/acs/www/guidance_for_data_users/comparing_2015/)

Use caution when interpreting changes in Race and Ethnicity over time. Starting with the 2000 Decennial Census, respondents were given a new option of selecting one or more race categories. Also in 2000, the placement of the question about Hispanic origin changed, helping to increase responsiveness to the Hispanic-origin question. Because of these and other changes, the 1990 data on race and ethnicity are not directly comparable with data from later censuses. (Source: <http://www.census.gov/prod/2001pubs/c2kbr01-1.pdf>; <http://www.census.gov/pred/www/rpts/Race%20and%20Ethnicity%20FINAL%20report.pdf>)

The "Minority" calculations are derived from Census and ACS data using both the race and ethnicity responses. On this report, "Minority" refers to individuals who list a race other than White and/or list their ethnicity as Hispanic/Latino. In other words, people who are multi-racial, any single race other than White, or Hispanic/Latino of any race are considered minorities.

Disability data is not included in the 2010 Decennial Census, or the 2006-2010 ACS. This data is available in the 2011-2015 ACS.

Because of changes made to the Census and ACS questions between 1990 and 2015, disability variables should not be compared from year to year. For example: 1) With the 1990 data the disabilities are listed as a "work disability" while this distinction is not made with 2000 or 2015 ACS data; 2) The 2015 ACS data includes the institutionalized population (e.g. persons in prisons and group homes), while this population is not included in 1990 or 2000; 3) the age groupings changed over the years.

Please take the following two concerns into account when viewing this data: 1) With the 1990 data the disabilities are listed as a "work disability" while this distinction is not made with 2000 or 2015 ACS data; 2) The 2015 ACS data includes the institutionalized population (e.g. persons in prisons and group homes), while this population is not included in 1990 or 2000.

The category Bachelor's Degree or Higher under the heading Educational Attainment Trends is a subset of the category High School Graduate or Higher.

Income of households. This includes the income of the householder and all other individuals 15 years old and over in the household, whether they are related to the householder or not. Because many households consist of only one person, average household income is usually less than average family income.

Income of families. In compiling statistics on family income, the incomes of all members 15 years old and over related to the householder are summed and treated as a single amount.

Age Trends median age for 1990 is not available.

### **Land Use Data**

The Land Use information Indicates acreages and percentages for the generalized land use types used to group parcel-specific, existing land use assigned by the county property appraiser office according to the Florida Department of Revenue land use codes.

### **Community Facilities Data**

- Assisted Rental Housing Units - Identifies multifamily rental developments that receive funding assistance under federal, state, and local government programs to offer affordable housing as reported by the Shimberg Center for Housing Studies, University of Florida.
- Mobile Home Parks - Identifies approved or acknowledged mobile home parks reported by the Florida Department of Business and Professional Regulation and Florida Department of Health.
- Migrant Camps - Identifies migrant labor camp facilities inspected by the Florida Department of Health.
- Group Care Facilities - Identifies group care facilities inspected by the Florida Department of Health.
- Community Center and Fraternal Association Facilities - Identifies facilities reported by multiple sources.
- Law Enforcement Correctional Facilities - Identifies facilities reported by multiple sources.

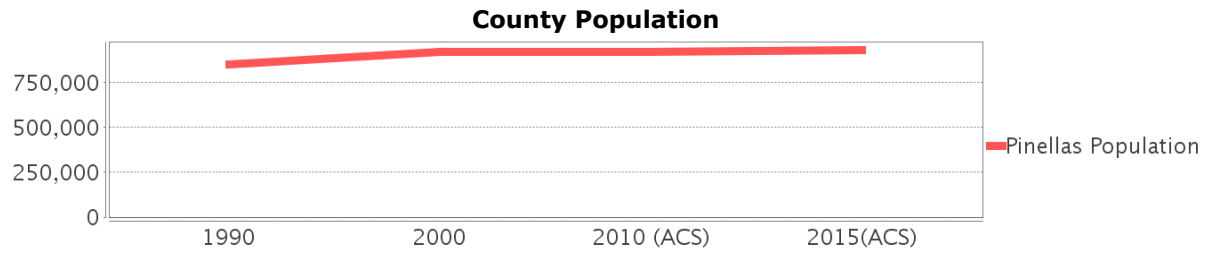
- Cultural Centers - Identifies cultural centers including organizations, buildings, or complexes that promote culture and arts (e.g., aquariums and zoological facilities; arboreta and botanical gardens; dinner theaters; drive-ins; historical places and services; libraries; motion picture theaters; museums and art galleries; performing arts centers; performing arts theaters; planetariums; studios and art galleries; and theater producers stage facilities) reported by multiple sources.
- Fire Department and Rescue Station Facilities - Identifies facilities reported by multiple sources.
- Government Buildings - Identifies local, state, and federal government buildings reported by multiple sources.
- Health Care Facilities - Identifies health care facilities including abortion clinics, dialysis clinics, medical doctors, nursing homes, osteopaths, state laboratories/clinics, and surgicenters/walk-in clinics reported by the Florida Department of Health.
- Hospital Facilities - Identifies hospital facilities reported by multiple sources.
- Law Enforcement Facilities - Identifies law enforcement facilities reported by multiple sources.
- Parks and Recreational Facilities - Identifies parks and recreational facilities reported by multiple sources.
- Religious Center Facilities - Identifies religious centers including churches, temples, synagogues, mosques, chapels, centers, and other types of religious facilities reported by multiple sources.
- Private and Public Schools - Identifies private and public schools reported by multiple sources.
- Social Service Centers - Identifies social service centers reported by multiple sources.
- Veteran Organizations and Facilities



# Pinellas County Demographic Profile

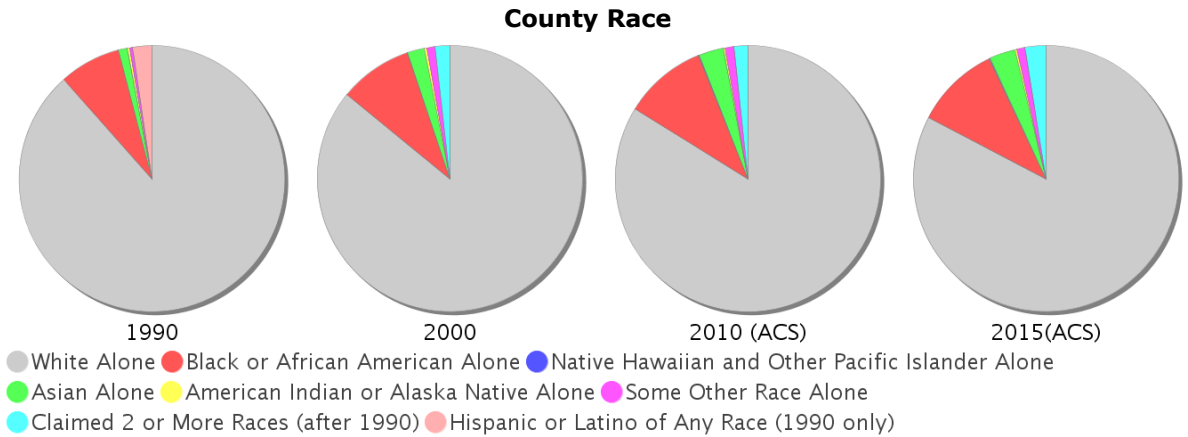
## General Population Trends - Pinellas

Description	1990	2000	2010 (ACS)	2015(ACS)
Total Population	851,659	921,482	918,263	931,477
Total Households	380,635	414,968	405,649	402,653
Average Persons per Acre	4.564	4.979	4.962	5.031
Average Persons per Household	2.237	2.164	2.00	2.27
Average Persons per Family	2.786	2.836	2.964	3.107
Males	397,563	438,291	440,533	446,740
Females	454,096	483,191	477,730	484,737



## Race and Ethnicity Trends - Pinellas

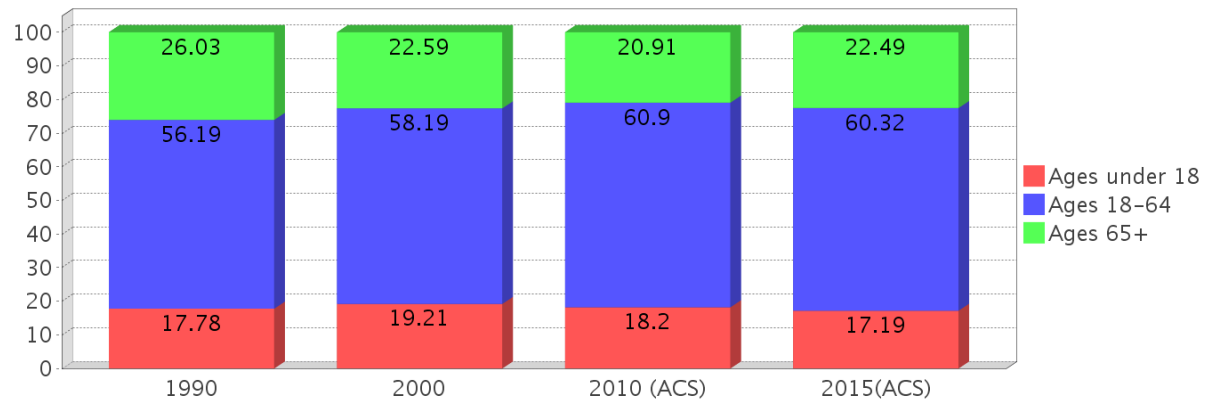
Description	1990	2000	2010 (ACS)	2015(ACS)
White Alone	770,374 (90.46%)	791,372 (85.88%)	769,296 (83.78%)	769,793 (82.64%)
Black or African American Alone	65,868 (7.73%)	82,384 (8.94%)	93,342 (10.17%)	96,133 (10.32%)
Native Hawaiian and Other Pacific Islander Alone	(NA)	226 (0.02%)	801 (0.09%)	706 (0.08%)
Asian Alone	9,523 (1.12%)	18,783 (2.04%)	27,616 (3.01%)	29,531 (3.17%)
American Indian or Alaska Native Alone	1,985 (0.23%)	2,903 (0.32%)	2,028 (0.22%)	2,610 (0.28%)
Some Other Race Alone	3,642 (0.43%)	9,278 (1.01%)	9,972 (1.09%)	9,304 (1.00%)
Claimed 2 or More Races	(NA)	16,536 (1.79%)	15,208 (1.66%)	23,400 (2.51%)
Hispanic or Latino of Any Race	20,069 (2.36%)	42,128 (4.57%)	68,009 (7.41%)	81,072 (8.70%)
Not Hispanic or Latino	831,590 (97.64%)	879,354 (95.43%)	850,254 (92.59%)	850,405 (91.30%)
Minority	211,756 (24.86%)	158,659 (17.22%)	211,756 (23.06%)	228,669 (24.55%)



### Age Trends - Pinellas

Description	1990	2000	2010 (ACS)	2015(ACS)
Under Age 5	5.24%	4.87%	4.66%	4.54%
Ages 5-17	12.54%	14.34%	13.53%	12.65%
Ages 18-21	4.19%	3.60%	4.19%	4.16%
Ages 22-29	10.56%	8.15%	8.59%	8.82%
Ages 30-39	14.69%	13.98%	11.05%	10.83%
Ages 40-49	11.75%	15.40%	15.14%	13.11%
Ages 50-64	15.00%	17.07%	21.93%	23.39%
Age 65 and Over	26.03%	22.59%	20.91%	22.49%
-Ages 65-74	13.49%	10.55%	9.92%	11.60%
-Ages 75-84	9.41%	8.81%	7.57%	7.32%
-Age 85 and Over	3.13%	3.23%	3.41%	3.56%
Median Age	NA	43	46	47

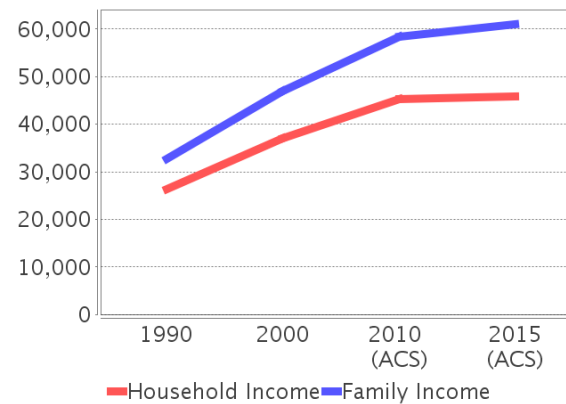
Percentage Population by Age Group



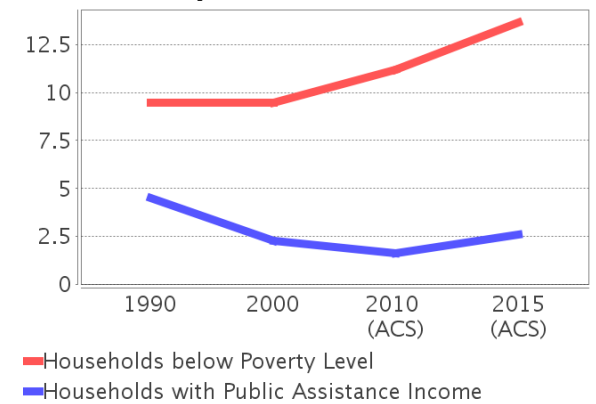
### Income Trends - Pinellas

Description	1990	2000	2010 (ACS)	2015(ACS)
Median Household Income	\$26,296	\$37,111	\$45,258	\$45,819
Median Family Income	\$32,634	\$46,925	\$58,335	\$61,036
Population below Poverty Level	9.50%	9.97%	12.08%	14.36%
Households below Poverty Level	9.48%	9.48%	11.18%	13.64%
Households with Public Assistance Income	4.48%	2.28%	1.61%	2.58%

Income Trends



Poverty and Public Assistance



### Disability Trends - Pinellas

See the Data Sources section below for an explanation about the differences in disability data among the various years.

Description	1990	2000	2010 (ACS)	2015(ACS)
Population 16 To 64 Years with a disability	46,369 (6.63%)	120,867 (14.02%)	NA (NA)	NA (NA)
Population 20 To 64 Years with a disability	NA (NA)	NA (NA)	NA (NA)	60,588 (11.23%)

## Educational Attainment Trends - Pinellas

Age 25 and Over

Description	1990	2000	2010 (ACS)	2015(ACS)
Less than 9th Grade	41,960	26,921	23,441	21,856
9th to 12th Grade, No Diploma	98,030	82,777	58,112	48,267
High School Graduate or Higher	497,881	576,396	603,326	633,597
Bachelor's Degree or Higher	117,805	157,235	185,600	203,163

## Language Trends - Pinellas

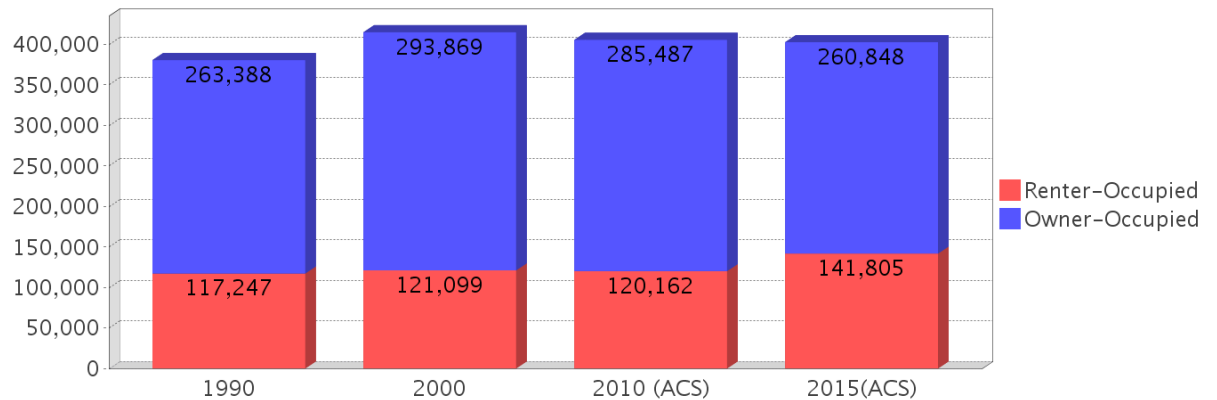
Age 5 and Over

Description	1990	2000	2010 (ACS)	2015(ACS)
Speaks English Well	14,850	22,208	23,929	23,595
Speaks English Not Well	NA	13,968	17,369	16,711
Speaks English Not at All	NA	3,177	6,866	6,597
Speaks English Not Well or Not at All	7,765	17,145	24,235	23,308

## Housing Trends - Pinellas

Description	1990	2000	2010 (ACS)	2015(ACS)
Total	458,341	481,573	503,078	503,658
Units per Acre	2.456	2.602	2.718	2.72
Single-Family Units	220,313	261,008	274,083	267,808
Multi-Family Units	120,210	169,202	180,940	187,962
Mobile Home Units	36,064	50,264	47,547	47,030
Owner-Occupied Units	263,388	293,869	285,487	260,848
Renter-Occupied Units	117,247	121,099	120,162	141,805
Vacant Units	77,706	66,605	97,429	101,005
Median Housing Value	\$73,500	\$85,600	\$185,700	\$150,200
Occupied Housing Units w/No Vehicle	40,426 (10.62%)	38,169 (9.20%)	31,489 (7.76%)	35,980 (8.94%)

### Housing Tenure



---

## County Data Sources

Demographic data reported is from the U.S. Decennial Census (1990, 2000) and the American Community Survey (ACS) 5-year estimates from 2006-2010 and 2011-2015. The data was gathered at the county level. Depending on the dataset, the data represents 100% counts (Census Summary File 1) or sample-based information (Census Summary File 3 or ACS).

### About the Census Data:

Use caution when comparing the 100% count data (Decennial Census) to the sample-based data (ACS). In any given year, about one in 40 or 2.5% of U.S. households will receive the ACS questionnaire. Over any five-year period, about one in eight households will receive the questionnaire, as compared to about one in six that received the long form questionnaire for the Decennial Census 2000. (Source: <http://mcdc.missouri.edu/pub/data/acs/Readme.shtml>) The U.S. Census Bureau provides help with this process:

[http://www.census.gov/acs/www/guidance\\_for\\_data\\_users/comparing\\_2015/](http://www.census.gov/acs/www/guidance_for_data_users/comparing_2015/)

Use caution when interpreting changes in Race and Ethnicity over time. Starting with the 2000 Decennial Census, respondents were given a new option of selecting one or more race categories. Also in 2000, the placement of the question about Hispanic origin changed, helping to increase responsiveness to the Hispanic-origin question. Because of these and other changes, the 1990 data on race and ethnicity are not directly comparable with data from later censuses. (Source: <http://www.census.gov/prod/2001pubs/c2kbr01-1.pdf>;  
<http://www.census.gov/pred/www/rpts/Race%20and%20Ethnicity%20FINAL%20report.pdf>)

The "Minority" calculations are derived from Census and ACS data using both the race and ethnicity responses. On this report, "Minority" refers to individuals who list a race other than White and/or list their ethnicity as Hispanic/Latino. In other words, people who are multi-racial, any single race other than White, or Hispanic/Latino of any race are considered minorities.

Disability data is not included in the 2010 Decennial Census, or the 2006-2010 ACS. This data is available in the 2011-2015 ACS.

Because of changes made to the Census and ACS questions between 1990 and 2015, disability variables should not be compared from year to year. For example: 1) With the 1990 data the disabilities are listed as a "work disability" while this distinction is not made with 2000 or 2015 ACS data; 2) The 2015 ACS data includes the institutionalized population (e.g. persons in prisons and group homes), while this population is not included in 1990 or 2000; 3) the age groupings changed over the years.

Please take the following two concerns into account when viewing this data: 1) With the 1990 data the disabilities are listed as a "work disability" while this distinction is not made with 2000 or 2015 ACS data; 2) The 2015 ACS data includes the institutionalized population (e.g. persons in prisons and group homes), while this population is not included in 1990 or 2000.

source:

<https://www.census.gov/people/disability/methodology/acs.html>

<https://www.census.gov/population/www/cen2000/90vs00/index.html>

The category Bachelor's Degree or Higher under the heading Educational Attainment Trends is a subset of the category High School Graduate or Higher.

---

## Metadata

- Community and Fraternal Centers [https://etdmpub.florida-etat.org/metadata/gc\\_communitycenter.htm](https://etdmpub.florida-etat.org/metadata/gc_communitycenter.htm)
- Correctional Facilities in Florida [https://etdmpub.florida-etat.org/metadata/gc\\_correctional.htm](https://etdmpub.florida-etat.org/metadata/gc_correctional.htm)
- Cultural Centers in Florida [https://etdmpub.florida-etat.org/metadata/gc\\_culturecenter.htm](https://etdmpub.florida-etat.org/metadata/gc_culturecenter.htm)
- Fire Department and Rescue Station Facilities in Florida [https://etdmpub.florida-etat.org/metadata/gc\\_firestat.htm](https://etdmpub.florida-etat.org/metadata/gc_firestat.htm)
- Local, State, and Federal Government Buildings in Florida [https://etdmpub.florida-etat.org/metadata/gc\\_govbuild.htm](https://etdmpub.florida-etat.org/metadata/gc_govbuild.htm)
- Florida Health Care Facilities [https://etdmpub.florida-etat.org/metadata/gc\\_health.htm](https://etdmpub.florida-etat.org/metadata/gc_health.htm)
- Hospital Facilities in Florida [https://etdmpub.florida-etat.org/metadata/gc\\_hospitals.htm](https://etdmpub.florida-etat.org/metadata/gc_hospitals.htm)
- Law Enforcement Facilities in Florida [https://etdmpub.florida-etat.org/metadata/gc\\_lawenforce.htm](https://etdmpub.florida-etat.org/metadata/gc_lawenforce.htm)
- Florida Parks and Recreational Facilities [https://etdmpub.florida-etat.org/metadata/gc\\_parks.htm](https://etdmpub.florida-etat.org/metadata/gc_parks.htm)
- Religious Centers [https://etdmpub.florida-etat.org/metadata/gc\\_religion.htm](https://etdmpub.florida-etat.org/metadata/gc_religion.htm)
- Florida Public and Private Schools [https://etdmpub.florida-etat.org/metadata/gc\\_schools.htm](https://etdmpub.florida-etat.org/metadata/gc_schools.htm)
- Social Service Centers [https://etdmpub.florida-etat.org/metadata/gc\\_socialservice.htm](https://etdmpub.florida-etat.org/metadata/gc_socialservice.htm)
- Assisted Rental Housing Units in Florida [https://etdmpub.florida-etat.org/metadata/gc\\_assisted\\_housing.htm](https://etdmpub.florida-etat.org/metadata/gc_assisted_housing.htm)
- Group Care Facilities <https://etdmpub.florida-etat.org/metadata/groupcare.htm>
- Mobile Home Parks in Florida [https://etdmpub.florida-etat.org/metadata/gc\\_mobilehomes.htm](https://etdmpub.florida-etat.org/metadata/gc_mobilehomes.htm)
- Migrant Camps in Florida <https://etdmpub.florida-etat.org/metadata/migrant.htm>
- Veteran Organizations and Facilities [https://etdmpub.florida-etat.org/metadata/gc\\_veterans.htm](https://etdmpub.florida-etat.org/metadata/gc_veterans.htm)
- Generalized Land Use - Florida DOT District 7 [https://etdmpub.florida-etat.org/metadata/d7\\_lu\\_gen.htm](https://etdmpub.florida-etat.org/metadata/d7_lu_gen.htm)
- Census Block Groups in Florida [https://etdmpub.florida-etat.org/metadata/e2\\_cenacs\\_cci.htm](https://etdmpub.florida-etat.org/metadata/e2_cenacs_cci.htm)
- 1990 Census Block Groups in Florida [https://etdmpub.florida-etat.org/metadata/e2\\_cenblkgrp\\_1990\\_cci.htm](https://etdmpub.florida-etat.org/metadata/e2_cenblkgrp_1990_cci.htm)
- 2000 Census Block Groups in Florida [https://etdmpub.florida-etat.org/metadata/e2\\_cenblkgrp\\_2000\\_cci.htm](https://etdmpub.florida-etat.org/metadata/e2_cenblkgrp_2000_cci.htm)
- 2010 Census Block Groups in Florida [https://etdmpub.florida-etat.org/metadata/e2\\_cenblkgrp\\_2010\\_cci.htm](https://etdmpub.florida-etat.org/metadata/e2_cenblkgrp_2010_cci.htm)