

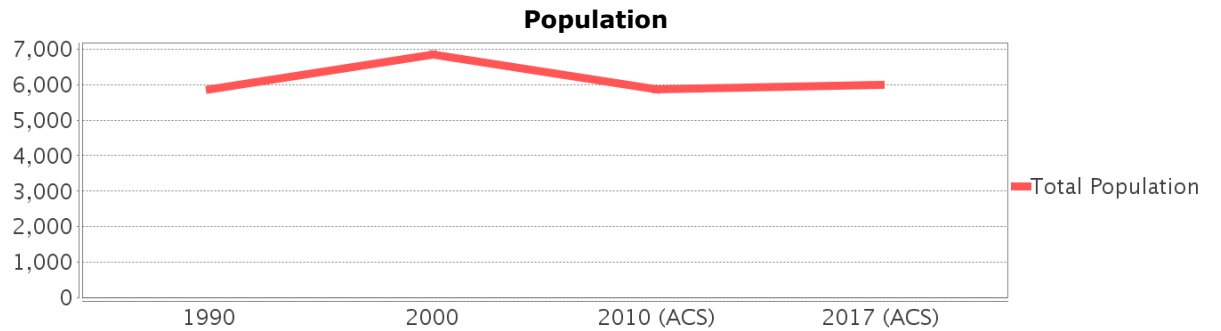
# Sociocultural Data Report

## Islamorada, Village of Islands

**Area:** 6.553 square miles  
**Jurisdiction(s):** **Cities:** Islamorada, Village Of Islands  
**Counties:** Monroe

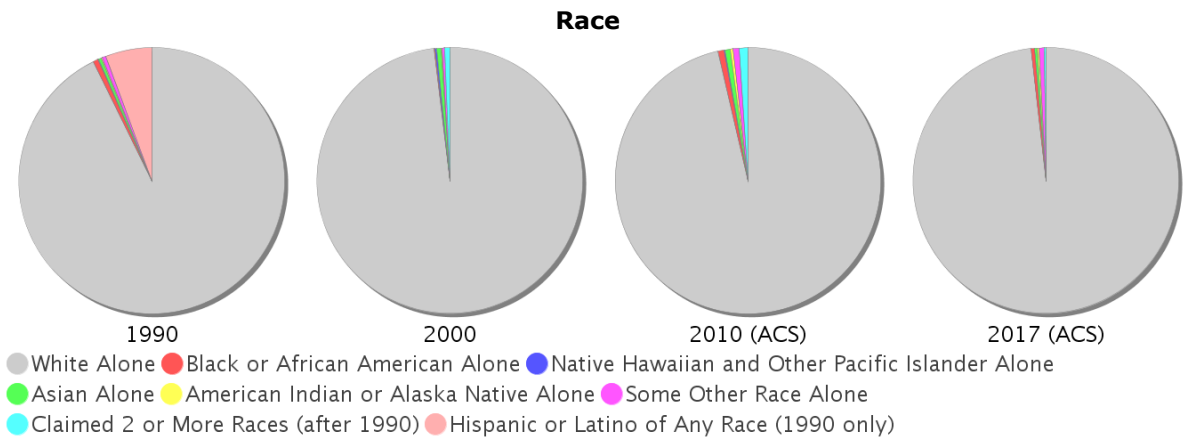
### General Population Trends

Description	1990	2000	2010 (ACS)	2017 (ACS)
Total Population	5,859	6,846	5,864	5,999
Total Households	2,721	3,175	2,773	2,561
Average Persons per Acre	2.02	2.04	1.99	2.06
Average Persons per Household	2.10	2.10	2.00	2.27
Average Persons per Family	2.59	2.80	2.57	2.92
Males	2,998	3,652	3,038	3,209
Females	2,861	3,195	2,826	2,789

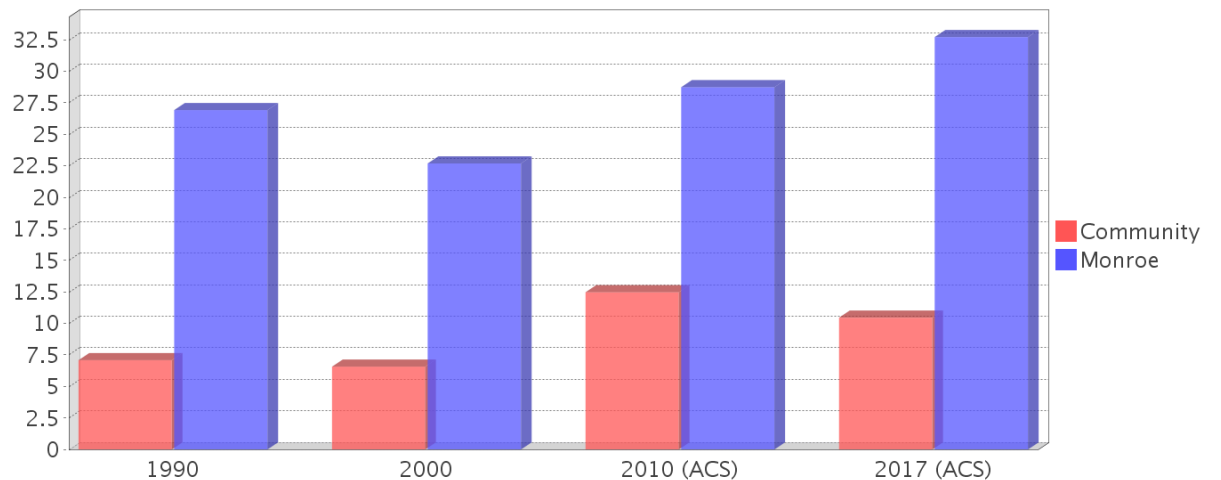


### Race and Ethnicity Trends

Description	1990	2000	2010 (ACS)	2017 (ACS)
White Alone	5,756 (98.24%)	6,715 (98.09%)	5,652 (96.38%)	5,890 (98.18%)
Black or African American Alone	40 (0.68%)	8 (0.12%)	42 (0.72%)	28 (0.47%)
Native Hawaiian and Other Pacific Islander Alone	3 (0.05%)	13 (0.19%)	8 (0.14%)	0 (0.00%)
Asian Alone	23 (0.39%)	39 (0.57%)	36 (0.61%)	19 (0.32%)
American Indian or Alaska Native Alone	6 (0.10%)	7 (0.10%)	22 (0.38%)	14 (0.23%)
Some Other Race Alone	31 (0.53%)	18 (0.26%)	43 (0.73%)	35 (0.58%)
Claimed 2 or More Races	NA (NA)	46 (0.67%)	61 (1.04%)	13 (0.22%)
Hispanic or Latino of Any Race	350 (5.97%)	345 (5.04%)	574 (9.79%)	554 (9.23%)
Not Hispanic or Latino	5,509 (94.03%)	6,501 (94.96%)	5,290 (90.21%)	5,445 (90.77%)
Minority	415 (7.08%)	450 (6.57%)	731 (12.47%)	627 (10.45%)



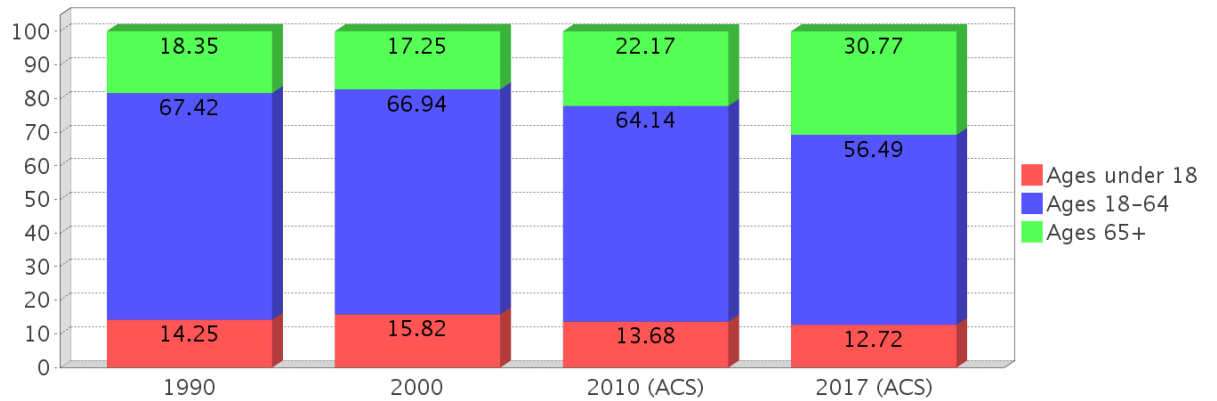
### Minority Percentage Population



### Age Trends

Description	1990	2000	2010 (ACS)	2017 (ACS)
Under Age 5	4.42%	3.80%	3.12%	3.15%
Ages 5-17	9.83%	12.02%	10.56%	9.57%
Ages 18-21	2.76%	2.48%	2.69%	1.88%
Ages 22-29	8.04%	6.31%	5.58%	5.55%
Ages 30-39	17.73%	12.45%	8.30%	6.93%
Ages 40-49	17.17%	20.98%	15.55%	10.85%
Ages 50-64	21.71%	24.73%	32.01%	31.27%
Age 65 and Over	18.35%	17.25%	22.17%	30.77%
-Ages 65-74	11.88%	10.58%	13.93%	17.30%
-Ages 75-84	5.22%	5.26%	6.14%	10.57%
-Age 85 and Over	1.26%	1.42%	2.10%	2.90%
Median Age	NA	45	50	55

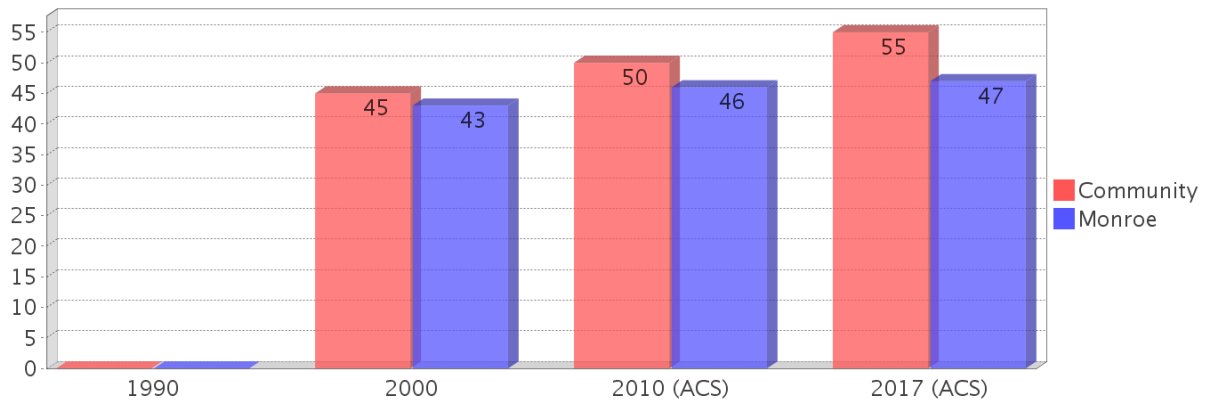
Percentage Population by Age Group



### Income Trends

Description	1990	2000	2010 (ACS)	2017 (ACS)
Median Household Income	\$36,720	\$39,651	\$60,560	\$64,375
Median Family Income	\$44,141	\$51,468	\$81,873	\$89,375
Population below Poverty Level	7.75%	6.81%	12.96%	11.05%
Households below Poverty Level	6.47%	6.08%	10.82%	9.41%
Households with Public Assistance Income	2.61%	2.05%	0.76%	1.05%

Median Age Comparison

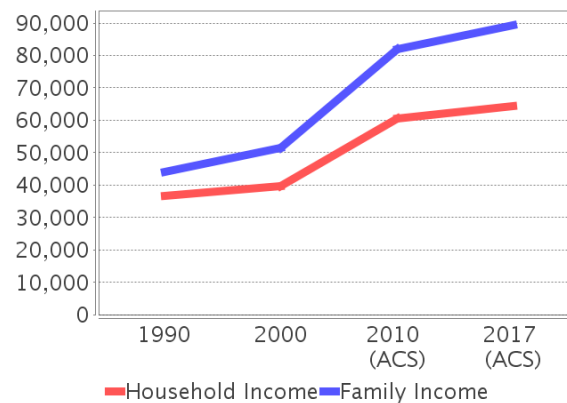


### Disability Trends

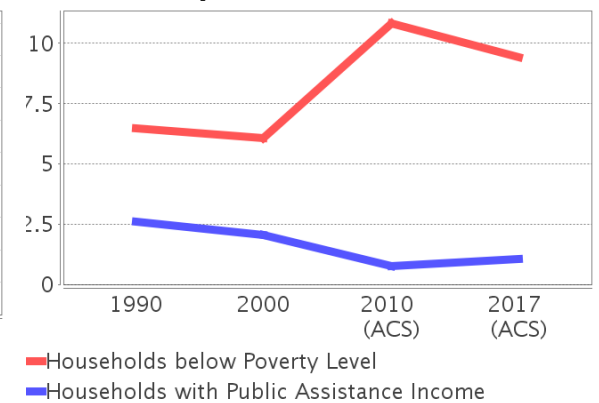
See the Data Sources section below for an explanation about the differences in disability data among the various years.

Description	1990	2000	2010 (ACS)	2017 (ACS)
Population 16 To 64 Years with a disability	296 (5.84%)	1019 (15.87%)	(NA)	(NA)
Population 20 To 64 Years with a disability	(NA)	(NA)	(NA)	214 (6.48%)

Income Trends



Poverty and Public Assistance



## Educational Attainment Trends

Age 25 and Over

Description	1990	2000	2010 (ACS)	2017 (ACS)
Less than 9th Grade	217 (4.59%)	149 (2.73%)	67 (1.37%)	134 (2.71%)
9th to 12th Grade, No Diploma	434 (9.17%)	303 (5.56%)	162 (3.30%)	181 (3.66%)
High School Graduate or Higher	4,080 (86.24%)	4,999 (91.72%)	4,678 (95.33%)	4,632 (93.63%)
Bachelor's Degree or Higher	1,067 (22.55%)	1,559 (28.61%)	1,312 (26.74%)	1,749 (35.35%)

## Language Trends

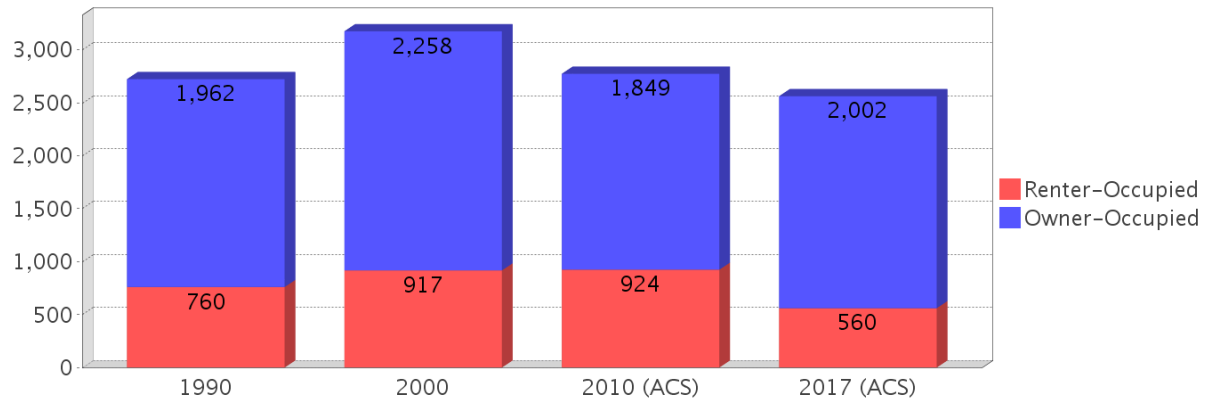
Age 5 and Over

Description	1990	2000	2010 (ACS)	2017 (ACS)
Speaks English Well	115 (2.03%)	38 (0.58%)	109 (1.84%)	104 (1.79%)
Speaks English Not Well	NA (NA)	48 (0.73%)	22 (0.37%)	9 (0.15%)
Speaks English Not at All	NA (NA)	3 (0.05%)	22 (0.37%)	15 (0.26%)
Speaks English Not Well or Not at All	50 (0.88%)	51 (0.77%)	44 (0.74%)	24 (0.41%)

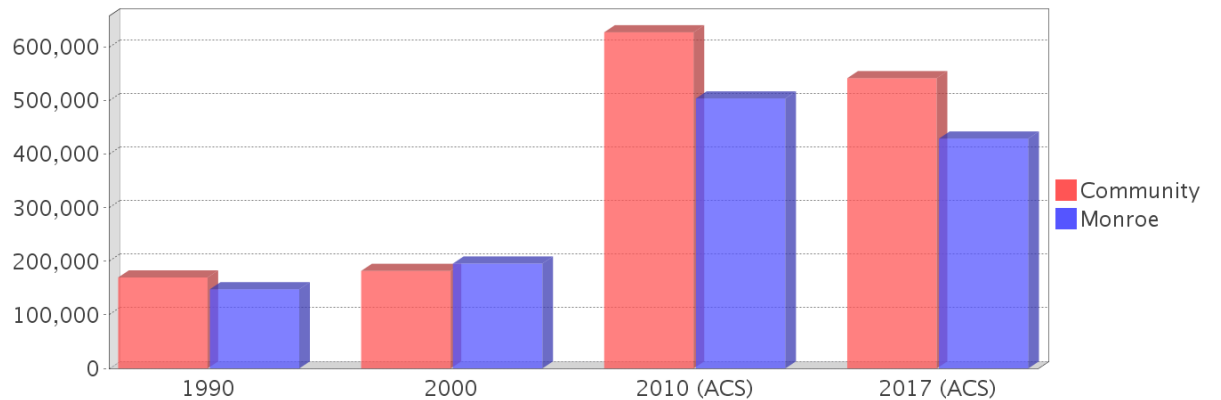
## Housing Trends

Description	1990	2000	2010 (ACS)	2017 (ACS)
Total	4,257	5,461	5,528	5,658
Units per Acre	1.30	1.43	1.56	1.60
Single-Family Units	1,755	3,735	3,498	3,871
Multi-Family Units	615	1,244	1,285	1,598
Mobile Home Units	222	434	329	188
Owner-Occupied Units	1,962	2,258	1,849	2,002
Renter-Occupied Units	760	917	924	560
Vacant Units	1,536	2,287	2,754	3,096
Median Housing Value	\$169,850	\$182,100	\$627,300	\$541,700
Occupied Housing Units w/No Vehicle	151 (5.55%)	148 (4.66%)	39 (1.41%)	66 (2.58%)

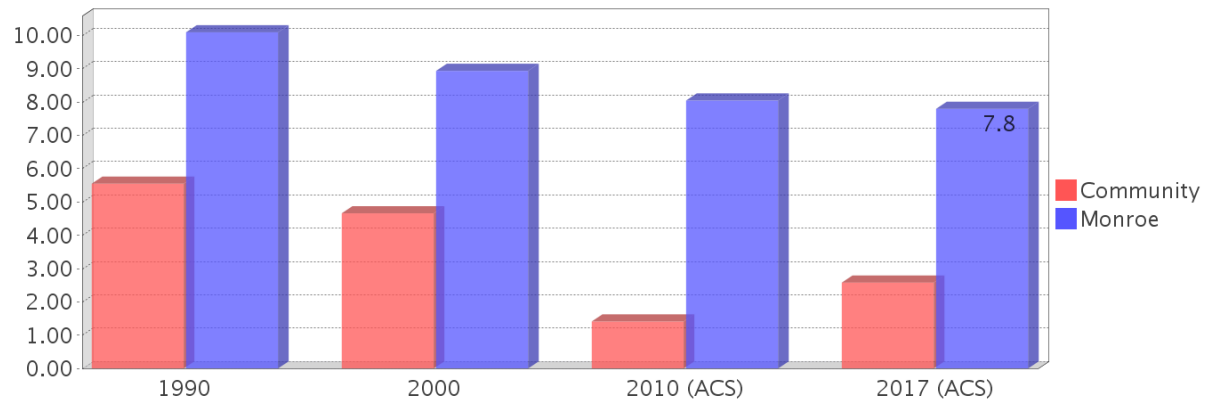
## Housing Tenure



## Median Housing Value Comparison

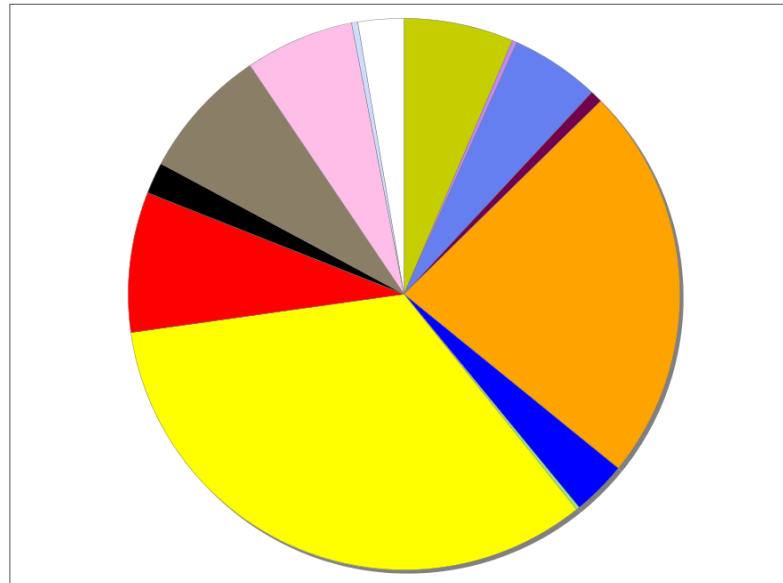


## Occupied Units With No Vehicles Available



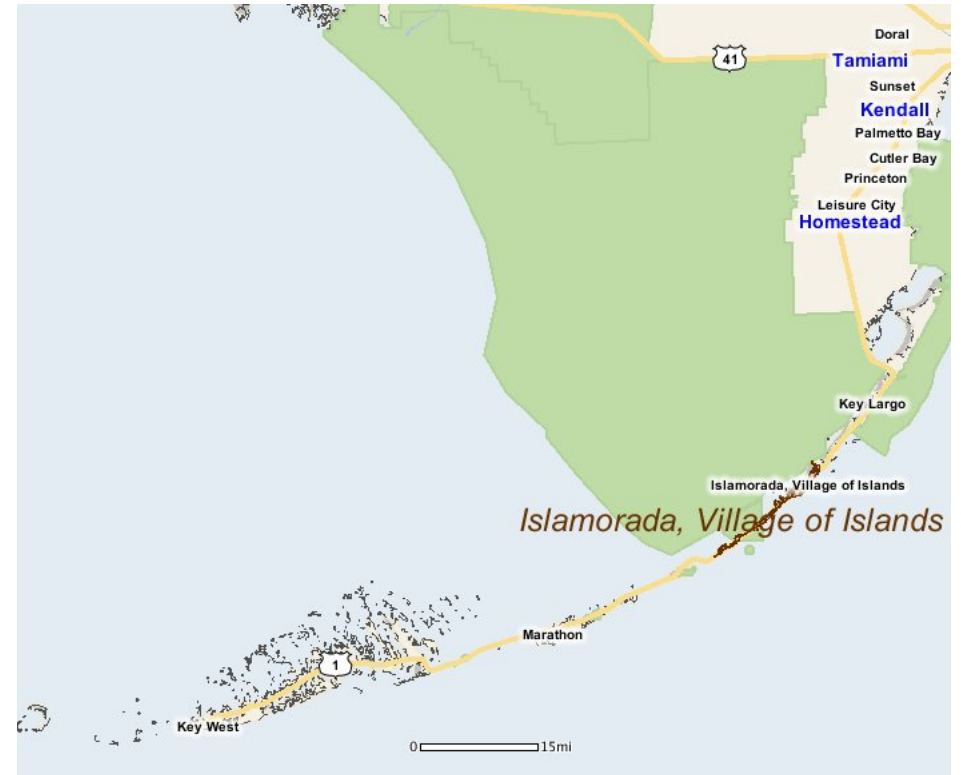
## Existing Land Use

Land Use Type	Acres	Percentage
Acreage Not Zoned For Agriculture	237	5.65%
Agricultural	0	0.00%
Centrally Assessed	0	0.00%
Industrial	10	0.24%
Institutional	193	4.60%
Mining	26	0.62%
Other	856	20.41%
Public/Semi-Public	118	2.81%
Recreation	6	0.14%
Residential	1,237	29.49%
Retail/Office	303	7.22%
Row	68	1.62%
Vacant Residential	285	6.80%
Vacant Nonresidential	236	5.63%
Water	13	0.31%
Parcels With No Values	99	2.36%



- Acreage Not Zoned For Agriculture
- Agricultural
- Centrally Assessed
- Industrial
- Institutional
- Mining
- Other
- Public/Semi-Public
- Recreation
- Residential
- Retail/Office
- Row
- Vacant Residential
- Vacant Nonresidential
- Water
- Parcels With No Values

## Location Maps



## Community Facilities

The community facilities information below is useful in a variety of ways for environmental evaluations. These community resources should be evaluated for potential sociocultural effects, such as accessibility and relocation potential. The facility types may indicate the types of population groups present in the project study area. Facility staff and leaders can be sources of community information such as who uses the facility and how it is used. Additionally, community facilities are potential public meeting venues.

### Assisted Housing (Points)

Facility Name	Address	Zip Code
WET-NET VILLAS	81101 OVERSEAS HWY	33036

### Community Centers (Points)

Facility Name	Address	Zip Code
MOOSE LODGE 2151 - ISLAMORADA	81573 OLD HWY	33036
BOY SCOUTS OF AMERICA - ISLAMORADA	73800 OVERSEAS HWY	33036
CHAMBER OF COMMERCE - ISLAMORADA	83224 OVERSEAS HWY	33036

### Correctional Facilities (Points)

Facility Name	Address	Zip Code
PLANTATION KEY DETENTION FACILITY	53 HIGH POINT RD	33070

### Cultural Centers (Points)

Facility Name	Address	Zip Code
THEATER OF THE SEA	84721 OVERSEAS HWY	33036
HELEN WADLEY BRANCH LIBRARY	81830 OVERSEAS HWY	33036
FLORIDA KEYS HISTORY OF DIVING MUSEUM	82990 OVERSEAS HWY	33036

### Fire Stations (Points)

Facility Name	Address	Zip Code
ISLAMORADA VILLAGE OF ISLANDS FIRE DEPARTMENT AND RESCUE STATION 20 (BERNARD RUSSELL)	81850 OVERSEAS HWY	33036
ISLAMORADA VILLAGE OF ISLANDS FIRE DEPARTMENT AND RESCUE STATION 21 (PLANTATION KEY)	86800 OVERSEAS HWY	33036
ISLAMORADA VILLAGE OF ISLANDS FIRE DEPARTMENT AND RESCUE STATION 19 (LOWER MATECUMBE)	74070 OVERSEAS HWY	33036

### Florida Parks and Recreational Facilities (Points)

Facility Name	Address	Zip Code
LIGNUMVITAE KEY BOTANICAL STATE PARK (MAIN ENTRANCE)	72200 OVERSEAS HWY	33036
WINDLEY KEY FOSSIL REEF GEOLOGICAL STATE PARK (MAIN ENTRANCE)	84900 OVERSEAS HIGHWAY	33036
ANNES BEACH	OVERSEAS HWY	33036
FLORIDA KEYS OVERSEAS HERITAGE TRAIL (MAIN ENTRANCE)	OVERSEAS HWY	33036
KEY TREE CACTUS PRESERVE PARK	VACANT LAND	33036
GREEN TURTLE HAMMOCK PRESERVE & NATURE CENTER	81224 OVERSEAS HWY REAR	33036
ISLAMORADA - EAST RIDGE ROAD PUBLIC BOAT RAMP (NO PARKING - SMALL BOATS ONLY)	EAST RIDGE ROAD	33070
FOUNDERS PARK AND PLANTATION HAMMOCKS PRESERVE	86800 OVERSEAS HWY	33070
INDIAN KEY FILL PUBLIC PRIMITIVE BOAT RAMP	79775 OVERSEAS HIGHWAY	33036
WINDLEY KEY FOSSIL REEF GEOLOGICAL STATE PARK - HAMMOCK TRAIL TRAILHEAD	85300 OVERSEAS HWY	33036
ISLAMORADA VILLAGE OF ISLANDS CITY PARK	82216 OVERSEAS HWY 10	33036
LIGNUMVITAE CHANNEL / INDIAN KEY CHANNEL PARK	OVERSEAS HWY	33036
ISLAMORADA LIBRARY BEACH PARK	81850 OVERSEAS HWY	33036

Facility Name	Address	Zip Code
UPPER MATECUMBE KEY - BLACKWOOD ROAD PRIMITIVE LAUNCH SITE (NOT RECOMMENDED)	NORTH END OF BLACKWOOD DRIVE	33036
PLANTATION TROPICAL PARK & BOAT RAMP	90800 OVERSEAS HWY	33036
ISLAMORADA PARK / CHANNEL 2	OVERSEAS HWY	33036

### Government Building

Facility Name	Address	Zip Code
U S POST OFFICE - ISLAMORADA	82801 OVERSEAS HWY	33036
MONROE COUNTY - COUNTY COURT	50 HIGH POINT RD	33070
MONROE COUNTY - COUNTY COURT	88820 OVERSEAS HWY	33070
MONROE COUNTY TAX COLLECTOR - PLANTATION KEY BRANCH	88800 OVERSEAS HWY	33070
VILLAGE OF ISLAMORADA ADMINISTRATIVE CENTER	86800 OVERSEAS HWY	33036
MONROE COUNTY HEALTH DEPARTMENT - ROTH BUILDING	50 HIGH POINT RD	33070
MONROE COUNTY PROPERTY APPRAISER	88700 OVERSEAS HWY	33070

### Healthcare Facilities (Geocoded)

Facility Name	Address	Zip Code
DOH-MONROE CO-TAVERNIER	50 HIGH POINT ROAD 105	33070
ADVANCED DERMATOLOGY & COSMETIC SURGERY	82245 OVERSEAS HIGHWAY	33036
SKIN AND CANCER ASSOCIATES	82245 OVERSEAS HIGHWAY	33036
PLANTATION KEY NURSING CENTER	48 HIGH POINT ROAD	33070

### Law Enforcement Facilities (Points)

Facility Name	Address	Zip Code
MONROE COUNTY SHERIFF'S OFFICE - TAVERNIER SUBSTATION	50 HIGH POINT RD	33070
MONROE COUNTY SHERIFF'S OFFICE - ISLAMORADA SUBSTATION	86800 OVERSEAS HWY	33036

### Mobile Home Parks in Florida

Facility Name	Address	Zip Code
SEABREEZE MHP	87425 OLD OVERSEAS HWY	33036
SAN PEDRO TP	87401 OLD HWY	33036
PEACEFUL PALMS	84745 OLD HIGHWAY ONE	33036
VILLAGE MOBILE PARK INC	81648 OVERSEAS HWY	33036
WINDLEY KEY TP	84961 OLD HIGHWAY (BOX 42)	33036

### Public and Private Schools (Points)

Facility Name	Address	Zip Code
CORAL SHORES HIGH SCHOOL	89901 OLD HWY	33070
ISLAND CHRISTIAN SCHOOL	83250 OVERSEAS HWY	33036
TREASURE VILLAGE MONTESSORI CHARTER SCHOOL	86731 OVERSEAS HWY	33036
PLANTATION KEY SCHOOL	100 LAKE RD	33070
FLORIDA KEYS COMMUNITY COLLEGE - UPPER KEYS CENTER	89951 US HIGHWAY 1	33070
MONROE COUNTY SCHOOL TRANSPORTATION	89990 OVERSEAS HWY	33070

### Religious Centers (Points)

Facility Name	Address	Zip Code
MATECUMBE UNITED METHODIST CHURCH	81831 OVERSEAS HIGHWAY	33036
RESTORATION MINISTRIES CHUCH	161 PEARL AVENUE	33070
IMMANUEL LUTHERAN CHURCH	108 OCEAN DRIVE	33070
RESTORATION MINISTRIES	161 PALERMO DRIVE	33036
SPIRIT & TRUTH MINISTRIES	89655 OVERSEAS HWY	33036
ISLAND COMMUNITY CHURCH	83250 OVERSEAS HIGHWAY	33036
FIRST BAPTIST CHURCH	81200 OVERSEAS HWY	33036
ISLAMORADA SEVENTH-DAY ADVENTIST CHURCH	86450 OVERSEAS HWY	33036

Facility Name	Address	Zip Code
CORAL ISLES UNITED CHURCH OF CHIST- CONGRGTNL E & R	90001 OVERSEAS HWY	33070
ST JAMES THE FISHERMAN EPISCOPAL CHURCH	87500 OVERSEAS HWY	33036
SAN PEDRO CATHOLIC CHURCH	89500 OVERSEAS HWY	33070

### Social Services (Geocoded)

Facility Name	Address	Zip Code
MONROE COUNTY SOCIAL SERVICES IN-HOME AND NUTRITION SERVICES	88770 OVERSEAS HIGHWAY	33070
FLORIDA KEYS CHILDREN'S SHELTER	73 HIGH POINT RD	33070

### US Census Places

Facility Name
Tavernier
Islamorada, Village of Islands

---

## Block Groups

The following Census Block Groups were used to calculate demographics for this report.

### 1990 Census Block Groups

120879709005, 120879708002, 120879709001, 120879708004, 120879709004, 120879708006, 120879709002, 120879708003, 120879708005, 120879708001, 120879709003

### 2000 Census Block Groups

120879709002, 120879708005, 120879708004, 120879708002, 120879708001, 120879709005, 120879709003, 120879709001, 120879708003, 120879709004, 120879707003

### 2010 Census Block Groups

120879709001, 120879708003, 120879708001, 120879709002, 120879708002, 120879707003, 120879708004

### 2017 Census Block Groups

120879708003, 120879708002, 120879707003, 120879709002, 120879708001, 120879709001, 120879708004

---

## Data Sources

### Area

The geographic area of the community based on a user-specified community boundary or area of interest (AOI) boundary.

### Jurisdiction

Jurisdiction(s) includes local government boundaries that intersect the community or AOI boundary.

### Demographic Data

Demographic data reported under the headings General Population Trends, Race and Ethnicity Trends, Age Trends, Income Trends, Educational Attainment Trends, Language Trends, and Housing Trends is from the U.S. Decennial Census (1990, 2000) and the American Community Survey (ACS) 5-year estimates from 2006-2010 and 2013-2017. The data was gathered at the block group level for user-specified community boundaries and AOIs, and at the county level for counties. Depending on the dataset, the data represents 100% counts (Census Summary File 1) or sample-based information (Census Summary File 3 or ACS).

### About the Census Data:

User-specified community boundaries and AOIs do not always correspond precisely to block group boundaries. In these instances, adjustment of the geographic area and data for affected block groups is required to estimate the actual population. To improve the accuracy of such estimates in the SDR report, the census block group data was adjusted to exclude all census blocks with a population of two or fewer. These areas were eliminated from the corresponding years' block groups. Next, the portion of the block group that lies outside of the community or AOI boundary was removed. The demographics within each block group were then recalculated, assuming an equal area distribution of the population. Note that there may be areas where there is no population.

Use caution when comparing the 100% count data (Decennial Census) to the sample-based data (ACS). In any given year, about one in 40 or 2.5% of U.S. households will receive the ACS questionnaire. Over any five-year period, about one in eight households will receive the questionnaire, as compared to about one in six that received the long form questionnaire for the Decennial Census 2000. (Source: <http://mcdc.missouri.edu/pub/data/acs/Readme.shtml>) The U.S.



Census Bureau provides help with this process:

<https://www.census.gov/programs-surveys/acs/guidance/comparing-acs-data/2017.html>

Use caution when interpreting changes in Race and Ethnicity over time. Starting with the 2000 Decennial Census, respondents were given a new option of selecting one or more race categories. Also in 2000, the placement of the question about Hispanic origin changed, helping to increase responsiveness to the Hispanic-origin question. Because of these and other changes, the 1990 data on race and ethnicity are not directly comparable with data from later censuses. (Source: <http://www.census.gov/prod/2001pubs/c2kbr01-1.pdf>;  
<http://www.census.gov/pred/www/rpts/Race%20and%20Ethnicity%20FINAL%20report.pdf>)

The "Minority" calculations are derived from Census and ACS data using both the race and ethnicity responses. On this report, "Minority" refers to individuals who list a race other than White and/or list their ethnicity as Hispanic/Latino. In other words, people who are multi-racial, any single race other than White, or Hispanic/Latino of any race are considered minorities.

Disability data is not included in the 2010 Decennial Census, or the 2006-2010 ACS. This data is available in the 2013-2017 ACS.

Because of changes made to the Census and ACS questions between 1990 and 2017, disability variables should not be compared from year to year. For example: 1) With the 1990 data the disabilities are listed as a "work disability" while this distinction is not made with 2000 or 2017 ACS data; 2) The 2017 ACS data includes the institutionalized population (e.g. persons in prisons and group homes), while this population is not included in 1990 or 2000; 3) the age groupings changed over the years.

Please take the following two concerns into account when viewing this data: 1) With the 1990 data the disabilities are listed as a "work disability" while this distinction is not made with 2000 or 2017 ACS data; 2) The 2017 ACS data includes the institutionalized population (e.g. persons in prisons and group homes), while this population is not included in 1990 or 2000.

The category Bachelor's Degree or Higher under the heading Educational Attainment Trends is a subset of the category High School Graduate or Higher.

Income of households. This includes the income of the householder and all other individuals 15 years old and over in the household, whether they are related to the householder or not. Because many households consist of only one person, average household income is usually less than average family income.

Income of families. In compiling statistics on family income, the incomes of all members 15 years old and over related to the householder are summed and treated as a single amount.

Age Trends median age for 1990 is not available.

### **Land Use Data**

The Land Use information Indicates acreages and percentages for the generalized land use types used to group parcel-specific, existing land use assigned by the county property appraiser office according to the Florida Department of Revenue land use codes.

### **Community Facilities Data**

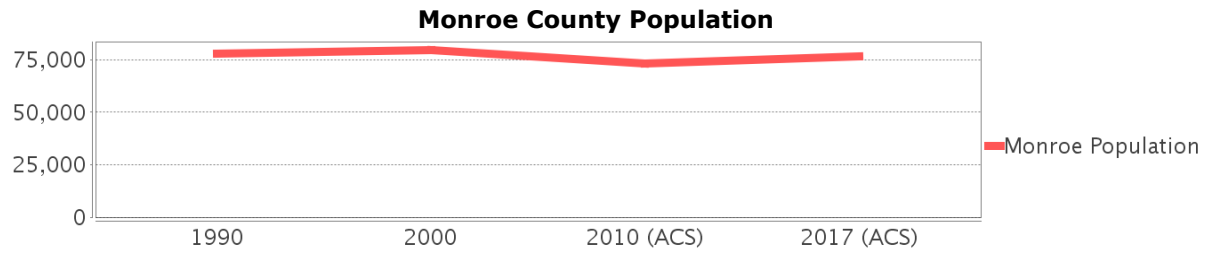
- Assisted Rental Housing Units - Identifies multifamily rental developments that receive funding assistance under federal, state, and local government programs to offer affordable housing as reported by the Shimberg Center for Housing Studies, University of Florida.
- Mobile Home Parks - Identifies approved or acknowledged mobile home parks reported by the Florida Department of Business and Professional Regulation and Florida Department of Health.

- Migrant Camps - Identifies migrant labor camp facilities inspected by the Florida Department of Health.
- Group Care Facilities - Identifies group care facilities inspected by the Florida Department of Health.
- Community Center and Fraternal Association Facilities - Identifies facilities reported by multiple sources.
- Law Enforcement Correctional Facilities - Identifies facilities reported by multiple sources.
- Cultural Centers - Identifies cultural centers including organizations, buildings, or complexes that promote culture and arts (e.g., aquariums and zoological facilities; arboreta and botanical gardens; dinner theaters; drive-ins; historical places and services; libraries; motion picture theaters; museums and art galleries; performing arts centers; performing arts theaters; planetariums; studios and art galleries; and theater producers stage facilities) reported by multiple sources.
- Fire Department and Rescue Station Facilities - Identifies facilities reported by multiple sources.
- Government Buildings - Identifies local, state, and federal government buildings reported by multiple sources.
- Health Care Facilities - Identifies health care facilities including abortion clinics, dialysis clinics, medical doctors, nursing homes, osteopaths, state laboratories/clinics, and surgicenters/walk-in clinics reported by the Florida Department of Health.
- Hospital Facilities - Identifies hospital facilities reported by multiple sources.
- Law Enforcement Facilities - Identifies law enforcement facilities reported by multiple sources.
- Parks and Recreational Facilities - Identifies parks and recreational facilities reported by multiple sources.
- Religious Center Facilities - Identifies religious centers including churches, temples, synagogues, mosques, chapels, centers, and other types of religious facilities reported by multiple sources.
- Private and Public Schools - Identifies private and public schools reported by multiple sources.
- Social Service Centers - Identifies social service centers reported by multiple sources.
- Veteran Organizations and Facilities

# Monroe County Demographic Profile

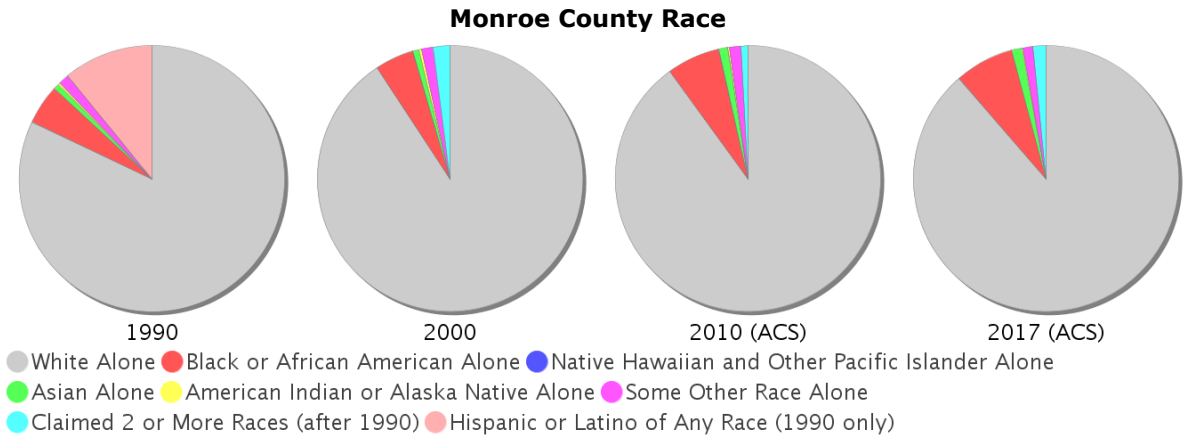
## General Population Trends - Monroe

Description	1990	2000	2010 (ACS)	2017 (ACS)
Total Population	78,024	79,589	73,065	76,745
Total Households	33,583	35,086	29,791	30,198
Average Persons per Acre	0.117	0.117	0.107	0.113
Average Persons per Household	2.323	2.229	2.00	2.47
Average Persons per Family	2.80	2.828	3.126	3.203
Males	40,976	42,327	38,795	40,218
Females	37,048	37,262	34,270	36,527



## Race and Ethnicity Trends - Monroe

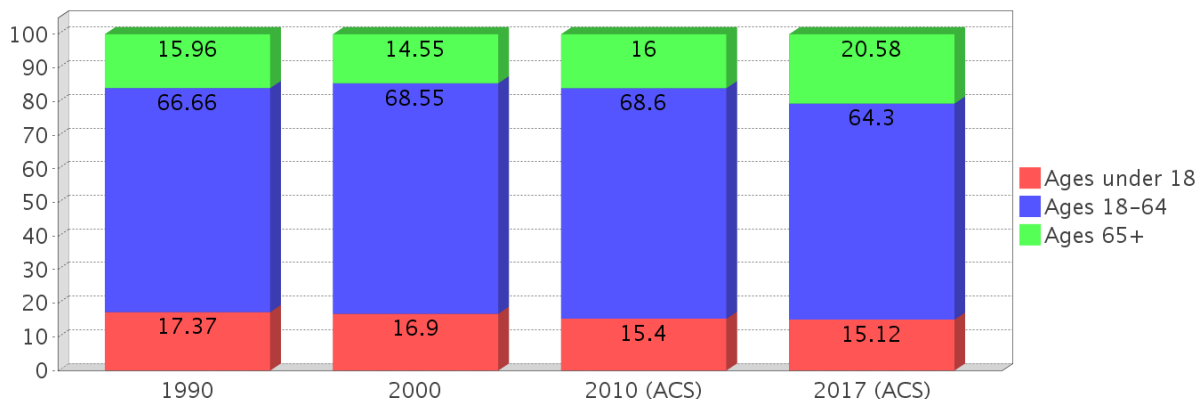
Description	1990	2000	2010 (ACS)	2017 (ACS)
White Alone	71,840 (92.07%)	72,214 (90.73%)	65,742 (89.98%)	68,025 (88.64%)
Black or African American Alone	4,203 (5.39%)	3,760 (4.72%)	4,698 (6.43%)	5,529 (7.20%)
Native Hawaiian and Other Pacific Islander Alone	(NA)	35 (0.04%)	48 (0.07%)	0 (0.00%)
Asian Alone	576 (0.74%)	566 (0.71%)	802 (1.10%)	937 (1.22%)
American Indian or Alaska Native Alone	258 (0.33%)	262 (0.33%)	107 (0.15%)	112 (0.15%)
Some Other Race Alone	1,093 (1.40%)	1,113 (1.40%)	1,066 (1.46%)	953 (1.24%)
Claimed 2 or More Races	(NA)	1,639 (2.06%)	602 (0.82%)	1,189 (1.55%)
Hispanic or Latino of Any Race	9,580 (12.28%)	12,500 (15.71%)	14,324 (19.60%)	18,021 (23.48%)
Not Hispanic or Latino	68,444 (87.72%)	67,089 (84.29%)	58,741 (80.40%)	58,724 (76.52%)
Minority	21,001 (26.92%)	18,062 (22.69%)	21,001 (28.74%)	25,102 (32.71%)



### Age Trends - Monroe

Description	1990	2000	2010 (ACS)	2017 (ACS)
Under Age 5	5.73%	4.13%	4.31%	4.62%
Ages 5-17	11.64%	12.77%	11.09%	10.50%
Ages 18-21	3.98%	3.31%	3.76%	4.19%
Ages 22-29	12.15%	9.10%	9.65%	8.96%
Ages 30-39	18.63%	15.57%	12.80%	11.95%
Ages 40-49	14.63%	19.15%	15.59%	13.99%
Ages 50-64	17.28%	21.43%	26.80%	25.20%
Age 65 and Over	15.96%	14.55%	16.00%	20.58%
-Ages 65-74	10.53%	8.88%	9.64%	12.95%
-Ages 75-84	4.54%	4.67%	4.91%	5.58%
-Age 85 and Over	0.89%	0.99%	1.45%	2.04%
Median Age	NA	43	46	47

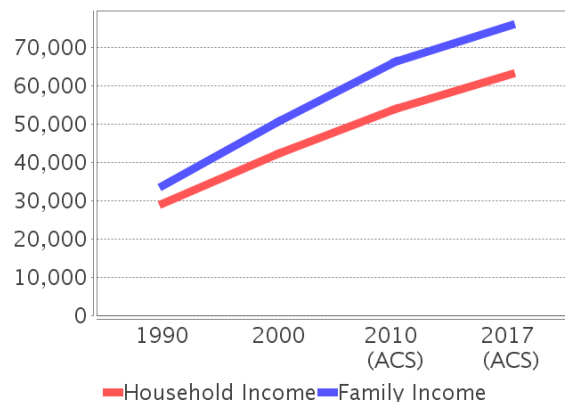
Percentage Population by Age Group - Monroe



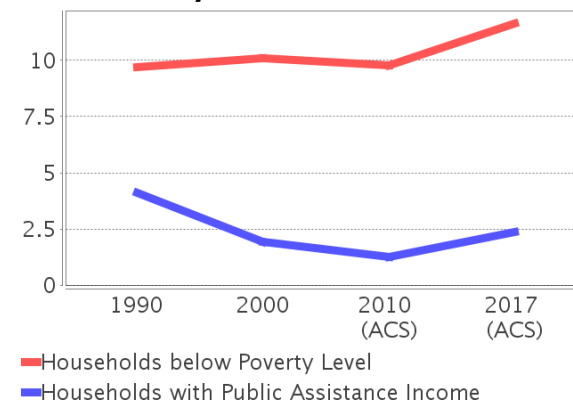
### Income Trends - Monroe

Description	1990	2000	2010 (ACS)	2017 (ACS)
Median Household Income	\$29,351	\$42,283	\$53,821	\$63,030
Median Family Income	\$33,906	\$50,734	\$66,152	\$75,828
Population below Poverty Level	10.77%	10.18%	10.76%	12.70%
Households below Poverty Level	9.70%	10.09%	9.78%	11.63%
Households with Public Assistance Income	4.13%	1.95%	1.24%	2.36%

Income Trends



Poverty and Public Assistance



### Disability Trends - Monroe

See the Data Sources section below for an explanation about the differences in disability data among the various years.

Description	1990	2000	2010 (ACS)	2017 (ACS)
Population 16 To 64 Years with a disability	4,278 (6.86%)	13,281 (17.92%)	NA (NA)	NA (NA)
Population 20 To 64 Years with a disability	NA (NA)	NA (NA)	NA (NA)	4,131 (8.85%)

## Educational Attainment Trends - Monroe

Age 25 and Over

Description	1990	2000	2010 (ACS)	2017 (ACS)
Less than 9th Grade	4,478 (7.64%)	2,827 (4.62%)	1,946 (3.44%)	2,430 (4.07%)
9th to 12th Grade, No Diploma	7,404 (12.64%)	6,405 (10.47%)	3,830 (6.76%)	2,816 (4.71%)
High School Graduate or Higher	46,703 (79.72%)	51,929 (84.91%)	50,858 (89.80%)	54,484 (91.22%)
Bachelor's Degree or Higher	11,901 (20.31%)	15,583 (25.48%)	16,278 (28.74%)	18,992 (31.80%)

## Language Trends - Monroe

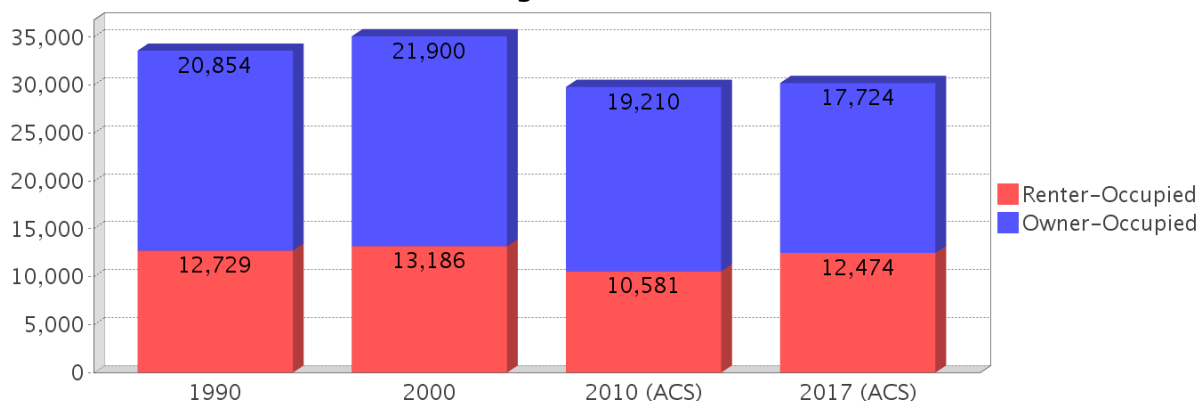
Age 5 and Over

Description	1990	2000	2010 (ACS)	2017 (ACS)
Speaks English Well	2,285 (3.10%)	2,777 (3.64%)	3,301 (4.72%)	3,442 (4.70%)
Speaks English Not Well	NA (NA)	2,566 (3.36%)	2,127 (3.04%)	2,577 (3.52%)
Speaks English Not at All	NA (NA)	994 (1.30%)	1,206 (1.72%)	912 (1.25%)
Speaks English Not Well or Not at All	2,289 (3.11%)	3,560 (4.67%)	3,333 (4.77%)	3,489 (4.77%)

## Housing Trends - Monroe

Description	1990	2000	2010 (ACS)	2017 (ACS)
Total	46,215	51,617	52,847	53,378
Units per Acre	0.07	0.076	0.078	0.078
Single-Family Units	17,113	28,415	32,311	31,006
Multi-Family Units	8,250	12,609	12,442	14,815
Mobile Home Units	6,791	9,814	7,919	7,456
Owner-Occupied Units	20,854	21,900	19,210	17,724
Renter-Occupied Units	12,729	13,186	10,581	12,474
Vacant Units	12,632	16,531	23,056	23,180
Median Housing Value	\$147,800	\$195,700	\$503,900	\$429,000
Occupied Housing Units w/No Vehicle	3,393 (10.10%)	3,137 (8.94%)	2,399 (8.05%)	2,356 (7.80%)

## Housing Tenure - Monroe



---

## County Data Sources

Demographic data reported is from the U.S. Decennial Census (1990, 2000) and the American Community Survey (ACS) 5-year estimates from 2006-2010 and 2013-2017. The data was gathered at the county level. Depending on the dataset, the data represents 100% counts (Census Summary File 1) or sample-based information (Census Summary File 3 or ACS).

### About the Census Data:

Use caution when comparing the 100% count data (Decennial Census) to the sample-based data (ACS). In any given year, about one in 40 or 2.5% of U.S. households will receive the ACS questionnaire. Over any five-year period, about one in eight households will receive the questionnaire, as compared to about one in six that received the long form questionnaire for the Decennial Census 2000. (Source: <http://mcdc.missouri.edu/pub/data/acs/Readme.shtml>) The U.S. Census Bureau provides help with this process:

<https://www.census.gov/programs-surveys/acs/guidance/comparing-acs-data/2017.html>

Use caution when interpreting changes in Race and Ethnicity over time. Starting with the 2000 Decennial Census, respondents were given a new option of selecting one or more race categories. Also in 2000, the placement of the question about Hispanic origin changed, helping to increase responsiveness to the Hispanic-origin question. Because of these and other changes, the 1990 data on race and ethnicity are not directly comparable with data from later censuses. (Source: <http://www.census.gov/prod/2001pubs/c2kbr01-1.pdf>;  
<http://www.census.gov/pred/www/rpts/Race%20and%20Ethnicity%20FINAL%20report.pdf>)

The "Minority" calculations are derived from Census and ACS data using both the race and ethnicity responses. On this report, "Minority" refers to individuals who list a race other than White and/or list their ethnicity as Hispanic/Latino. In other words, people who are multi-racial, any single race other than White, or Hispanic/Latino of any race are considered minorities.

Disability data is not included in the 2010 Decennial Census, or the 2006-2010 ACS. This data is available in the 2013-2017 ACS.

Because of changes made to the Census and ACS questions between 1990 and 2017, disability variables should not be compared from year to year. For example: 1) With the 1990 data the disabilities are listed as a "work disability" while this distinction is not made with 2000 or 2017 ACS data; 2) The 2017 ACS data includes the institutionalized population (e.g. persons in prisons and group homes), while this population is not included in 1990 or 2000; 3) the age groupings changed over the years.

Please take the following two concerns into account when viewing this data: 1) With the 1990 data the disabilities are listed as a "work disability" while this distinction is not made with 2000 or 2017 ACS data; 2) The 2017 ACS data includes the institutionalized population (e.g. persons in prisons and group homes), while this population is not included in 1990 or 2000.

source:

<https://www.census.gov/people/disability/methodology/acs.html>

<https://www.census.gov/population/www/cen2000/90vs00/index.html>

The category Bachelor's Degree or Higher under the heading Educational Attainment Trends is a subset of the category High School Graduate or Higher.

---

## Metadata

- Community and Fraternal Centers [https://etdmpub.florida-et.org/metadata/gc\\_communitycenter.htm](https://etdmpub.florida-et.org/metadata/gc_communitycenter.htm)
- Correctional Facilities in Florida [https://etdmpub.florida-et.org/metadata/gc\\_correctional.htm](https://etdmpub.florida-et.org/metadata/gc_correctional.htm)
- Cultural Centers in Florida [https://etdmpub.florida-et.org/metadata/gc\\_culturecenter.htm](https://etdmpub.florida-et.org/metadata/gc_culturecenter.htm)
- Fire Department and Rescue Station Facilities in Florida [https://etdmpub.florida-et.org/metadata/gc\\_firestat.htm](https://etdmpub.florida-et.org/metadata/gc_firestat.htm)
- Local, State, and Federal Government Buildings in Florida [https://etdmpub.florida-et.org/metadata/gc\\_govbuild.htm](https://etdmpub.florida-et.org/metadata/gc_govbuild.htm)
- Florida Health Care Facilities [https://etdmpub.florida-et.org/metadata/gc\\_health.htm](https://etdmpub.florida-et.org/metadata/gc_health.htm)
- Hospital Facilities in Florida [https://etdmpub.florida-et.org/metadata/gc\\_hospitals.htm](https://etdmpub.florida-et.org/metadata/gc_hospitals.htm)
- Law Enforcement Facilities in Florida [https://etdmpub.florida-et.org/metadata/gc\\_lawenforce.htm](https://etdmpub.florida-et.org/metadata/gc_lawenforce.htm)
- Florida Parks and Recreational Facilities [https://etdmpub.florida-et.org/metadata/gc\\_parks.htm](https://etdmpub.florida-et.org/metadata/gc_parks.htm)
- Religious Centers [https://etdmpub.florida-et.org/metadata/gc\\_religion.htm](https://etdmpub.florida-et.org/metadata/gc_religion.htm)
- Florida Public and Private Schools [https://etdmpub.florida-et.org/metadata/gc\\_schools.htm](https://etdmpub.florida-et.org/metadata/gc_schools.htm)
- Social Service Centers [https://etdmpub.florida-et.org/metadata/gc\\_socialservice.htm](https://etdmpub.florida-et.org/metadata/gc_socialservice.htm)
- Assisted Rental Housing Units in Florida [https://etdmpub.florida-et.org/metadata/gc\\_assisted\\_housing.htm](https://etdmpub.florida-et.org/metadata/gc_assisted_housing.htm)
- Group Care Facilities <https://etdmpub.florida-et.org/metadata/groupcare.htm>
- Mobile Home Parks in Florida [https://etdmpub.florida-et.org/metadata/gc\\_mobilehomes.htm](https://etdmpub.florida-et.org/metadata/gc_mobilehomes.htm)
- Migrant Camps in Florida <https://etdmpub.florida-et.org/metadata/migrant.htm>
- Veteran Organizations and Facilities [https://etdmpub.florida-et.org/metadata/gc\\_veterans.htm](https://etdmpub.florida-et.org/metadata/gc_veterans.htm)
- Generalized Land Use - Florida DOT District 6 [https://etdmpub.florida-et.org/metadata/d6\\_lu\\_gen.htm](https://etdmpub.florida-et.org/metadata/d6_lu_gen.htm)
- Census Block Groups in Florida [https://etdmpub.florida-et.org/metadata/e2\\_cenacs\\_cci.htm](https://etdmpub.florida-et.org/metadata/e2_cenacs_cci.htm)
- 1990 Census Block Groups in Florida [https://etdmpub.florida-et.org/metadata/e2\\_cenblkgrp\\_1990\\_cci.htm](https://etdmpub.florida-et.org/metadata/e2_cenblkgrp_1990_cci.htm)
- 2000 Census Block Groups in Florida [https://etdmpub.florida-et.org/metadata/e2\\_cenblkgrp\\_2000\\_cci.htm](https://etdmpub.florida-et.org/metadata/e2_cenblkgrp_2000_cci.htm)
- 2010 Census Block Groups in Florida [https://etdmpub.florida-et.org/metadata/e2\\_cenblkgrp\\_2010\\_cci.htm](https://etdmpub.florida-et.org/metadata/e2_cenblkgrp_2010_cci.htm)