

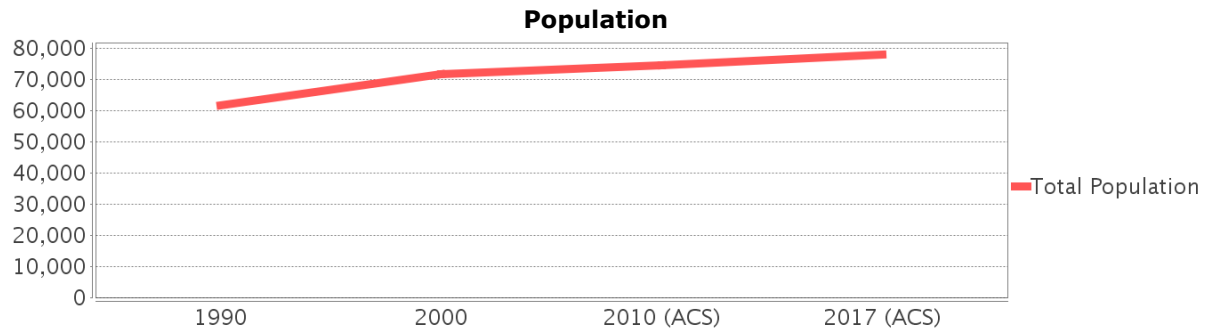
Sociocultural Data Report

Melbourne

Area: 39.57 square miles
Jurisdiction(s): **Cities:** Palm Shores, Melbourne, West Melbourne, Palm Bay, Melbourne Village, Indian Harbour Beach
Counties: Brevard

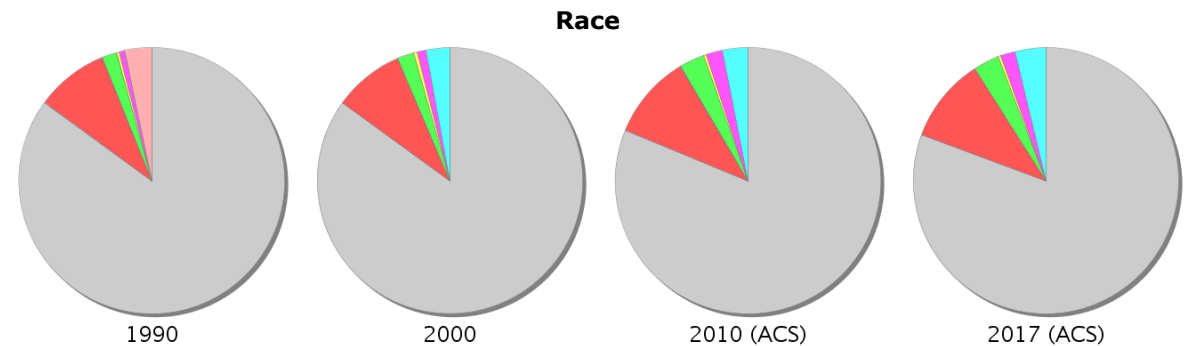
General Population Trends

Description	1990	2000	2010 (ACS)	2017 (ACS)
Total Population	61,666	71,627	74,491	77,945
Total Households	25,989	31,072	33,355	33,216
Average Persons per Acre	4.28	4.51	5.15	5.39
Average Persons per Household	2.54	2.19	2.19	2.35
Average Persons per Family	2.76	2.80	2.89	3.10
Males	30,175	34,729	36,230	37,978
Females	31,491	36,898	38,261	39,967



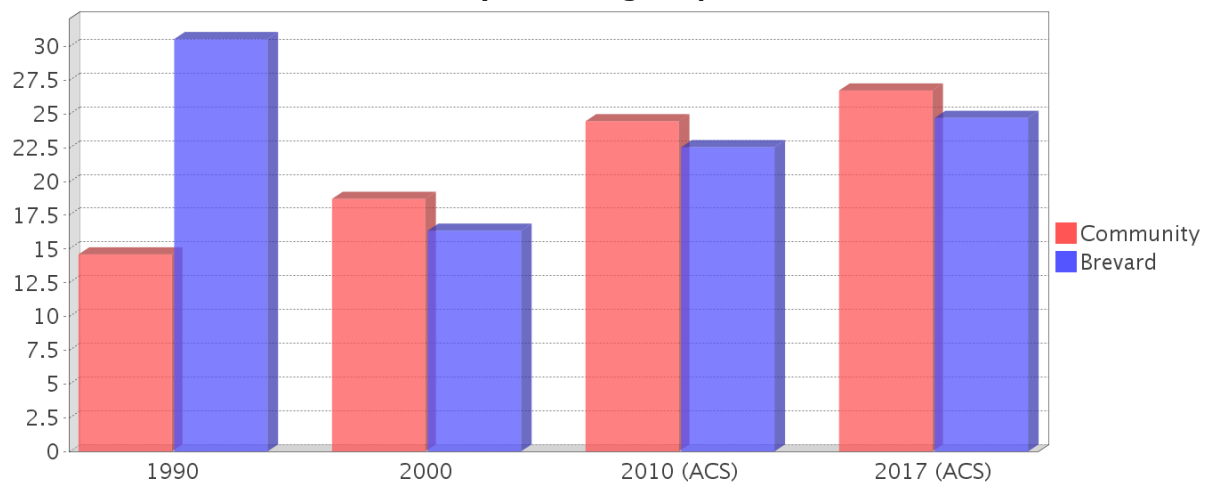
Race and Ethnicity Trends

Description	1990	2000	2010 (ACS)	2017 (ACS)
White Alone	54,217 (87.92%)	60,847 (84.95%)	60,507 (81.23%)	62,859 (80.65%)
Black or African American Alone	5,620 (9.11%)	6,155 (8.59%)	7,621 (10.23%)	8,064 (10.35%)
Native Hawaiian and Other Pacific Islander Alone	18 (0.03%)	6 (0.01%)	70 (0.09%)	0 (0.00%)
Asian Alone	1,183 (1.92%)	1,455 (2.03%)	2,247 (3.02%)	2,443 (3.13%)
American Indian or Alaska Native Alone	200 (0.32%)	346 (0.48%)	239 (0.32%)	261 (0.33%)
Some Other Race Alone	429 (0.70%)	724 (1.01%)	1,484 (1.99%)	1,377 (1.77%)
Claimed 2 or More Races	NA	2,095 (2.92%)	2,323 (3.12%)	2,940 (3.77%)
Hispanic or Latino of Any Race	2,086 (3.38%)	3,704 (5.17%)	6,519 (8.75%)	7,850 (10.07%)
Not Hispanic or Latino	59,580 (96.62%)	67,923 (94.83%)	67,972 (91.25%)	70,095 (89.93%)
Minority	9,004 (14.60%)	13,412 (18.72%)	18,230 (24.47%)	20,847 (26.75%)



● White Alone
 ● Black or African American Alone
 ● Native Hawaiian and Other Pacific Islander Alone
 ● Asian Alone
 ● American Indian or Alaska Native Alone
 ● Some Other Race Alone
 ● Claimed 2 or More Races (after 1990)
 ● Hispanic or Latino of Any Race (1990 only)

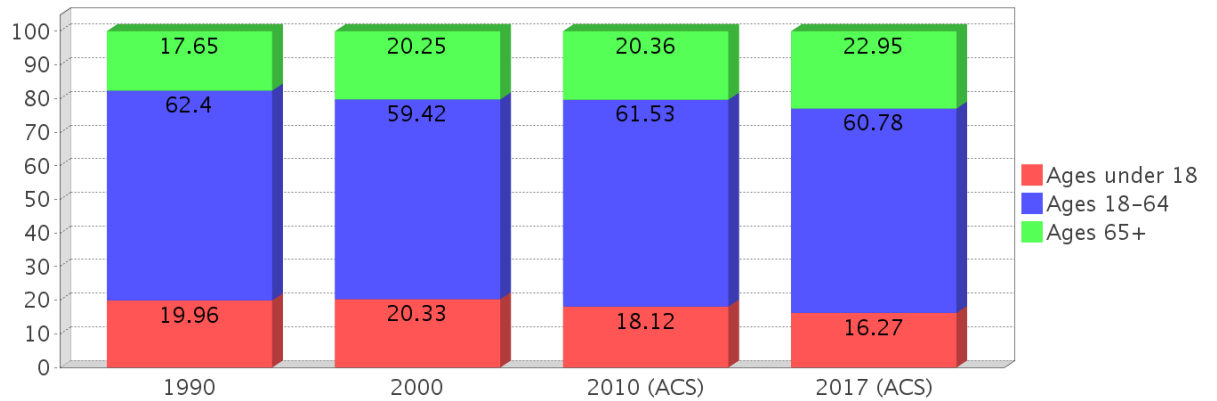
Minority Percentage Population



Age Trends

Description	1990	2000	2010 (ACS)	2017 (ACS)
Under Age 5	6.03%	5.24%	5.10%	5.02%
Ages 5-17	13.93%	15.09%	13.02%	11.25%
Ages 18-21	6.79%	5.45%	5.98%	5.77%
Ages 22-29	14.27%	9.61%	11.03%	11.25%
Ages 30-39	15.52%	14.04%	10.58%	10.77%
Ages 40-49	11.15%	14.67%	13.56%	10.56%
Ages 50-64	14.67%	15.64%	20.37%	22.42%
Age 65 and Over	17.65%	20.25%	20.36%	22.95%
-Ages 65-74	10.52%	10.10%	9.61%	12.05%
-Ages 75-84	5.47%	7.86%	7.43%	7.17%
-Age 85 and Over	1.67%	2.29%	3.32%	3.73%
Median Age	NA	39	44	46

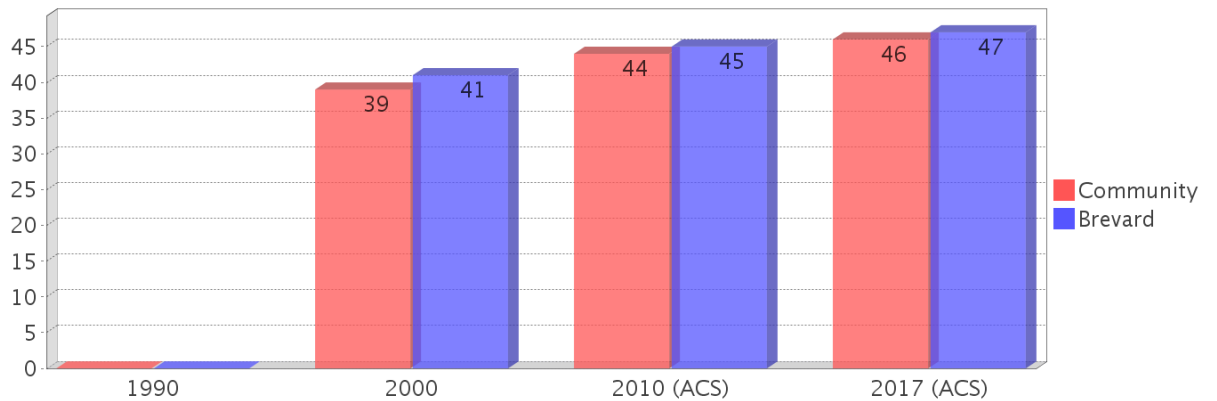
Percentage Population by Age Group



Income Trends

Description	1990	2000	2010 (ACS)	2017 (ACS)
Median Household Income	\$23,979	\$31,696	\$40,738	\$45,855
Median Family Income	\$29,424	\$38,895	\$53,340	\$55,694
Population below Poverty Level	12.12%	10.90%	13.63%	16.33%
Households below Poverty Level	12.26%	10.91%	12.99%	15.58%
Households with Public Assistance Income	4.58%	2.44%	1.81%	2.73%

Median Age Comparison

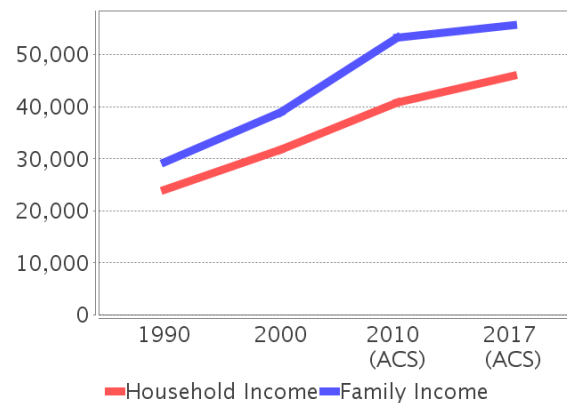


Disability Trends

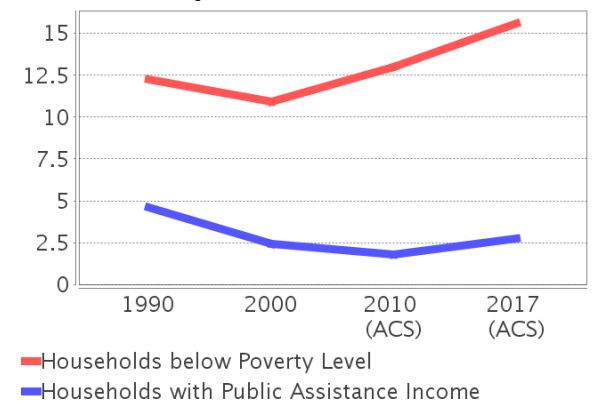
See the Data Sources section below for an explanation about the differences in disability data among the various years.

Description	1990	2000	2010 (ACS)	2017 (ACS)
Population 16 To 64 Years with a disability	3748 (7.53%)	9611 (14.53%)	(NA)	(NA)
Population 20 To 64 Years with a disability	(NA)	(NA)	(NA)	5291 (11.81%)

Income Trends



Poverty and Public Assistance



Educational Attainment Trends

Age 25 and Over

Description	1990	2000	2010 (ACS)	2017 (ACS)
Less than 9th Grade	2,725 (6.45%)	2,045 (4.05%)	1,783 (3.29%)	1,576 (2.72%)
9th to 12th Grade, No Diploma	6,160 (14.58%)	5,487 (10.86%)	4,063 (7.49%)	3,817 (6.59%)
High School Graduate or Higher	33,361 (78.97%)	42,998 (85.09%)	48,382 (89.22%)	52,539 (90.69%)
Bachelor's Degree or Higher	7,854 (18.59%)	10,751 (21.28%)	13,164 (24.28%)	14,981 (25.86%)

Language Trends

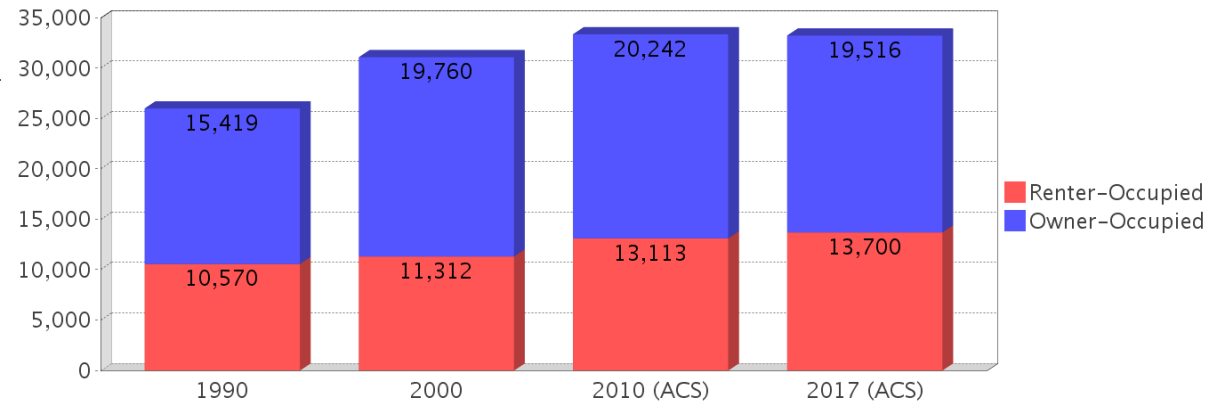
Age 5 and Over

Description	1990	2000	2010 (ACS)	2017 (ACS)
Speaks English Well	1,125 (1.94%)	1,343 (1.98%)	1,737 (2.42%)	2,028 (2.74%)
Speaks English Not Well	NA (NA)	671 (0.99%)	597 (0.83%)	845 (1.14%)
Speaks English Not at All	NA (NA)	130 (0.19%)	136 (0.19%)	338 (0.46%)
Speaks English Not Well or Not at All	584 (1.01%)	801 (1.18%)	733 (1.02%)	1,183 (1.60%)

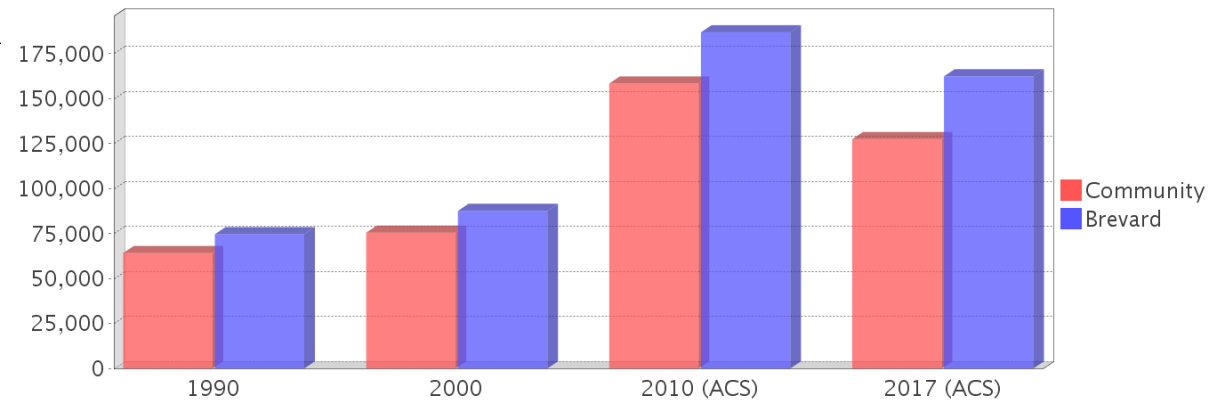
Housing Trends

Description	1990	2000	2010 (ACS)	2017 (ACS)
Total	29,104	34,205	38,364	38,691
Units per Acre	1.59	1.78	2.41	2.43
Single-Family Units	15,743	20,455	24,259	23,147
Multi-Family Units	8,241	10,613	12,612	13,435
Mobile Home Units	1,792	2,970	2,483	2,109
Owner-Occupied Units	15,419	19,760	20,242	19,516
Renter-Occupied Units	10,570	11,312	13,113	13,700
Vacant Units	3,115	3,133	5,009	5,476
Median Housing Value	\$64,150	\$75,500	\$158,400	\$127,500
Occupied Housing Units w/No Vehicle	2,275 (8.75%)	2,360 (7.60%)	2,430 (7.29%)	2,915 (8.78%)

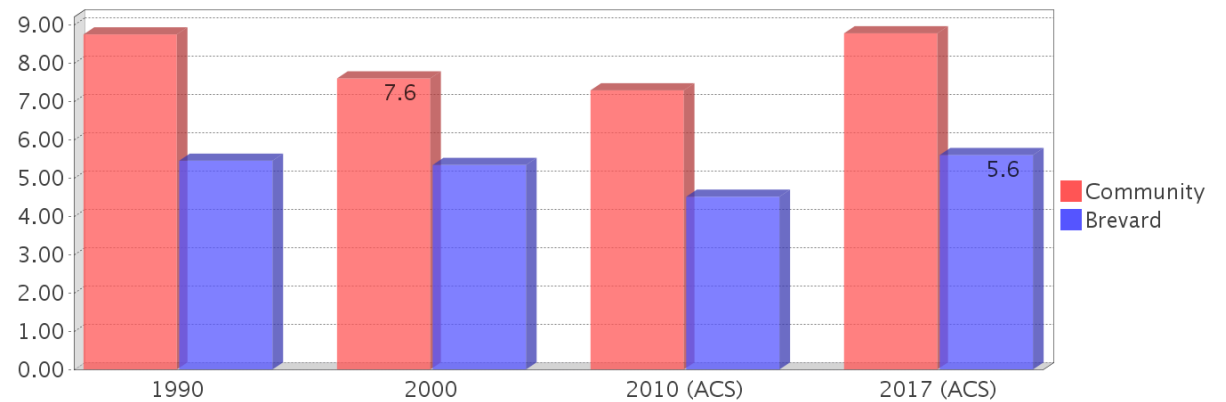
Housing Tenure



Median Housing Value Comparison

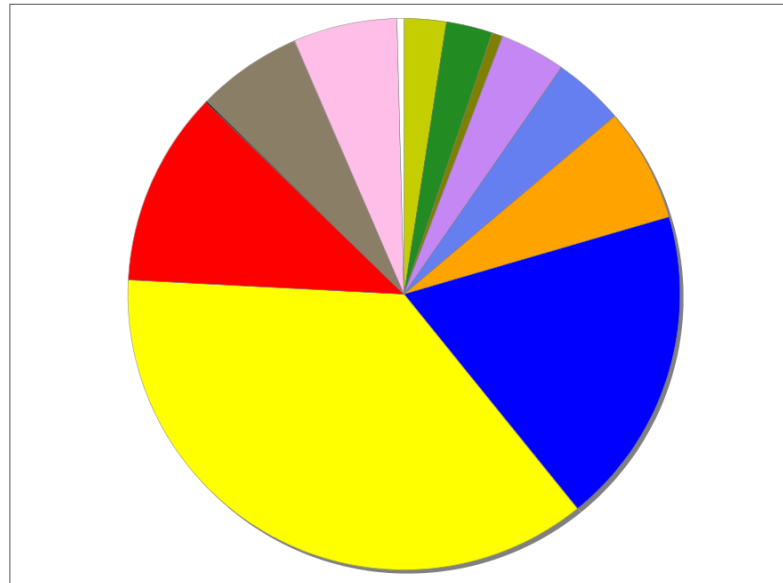


Occupied Units With No Vehicles Available



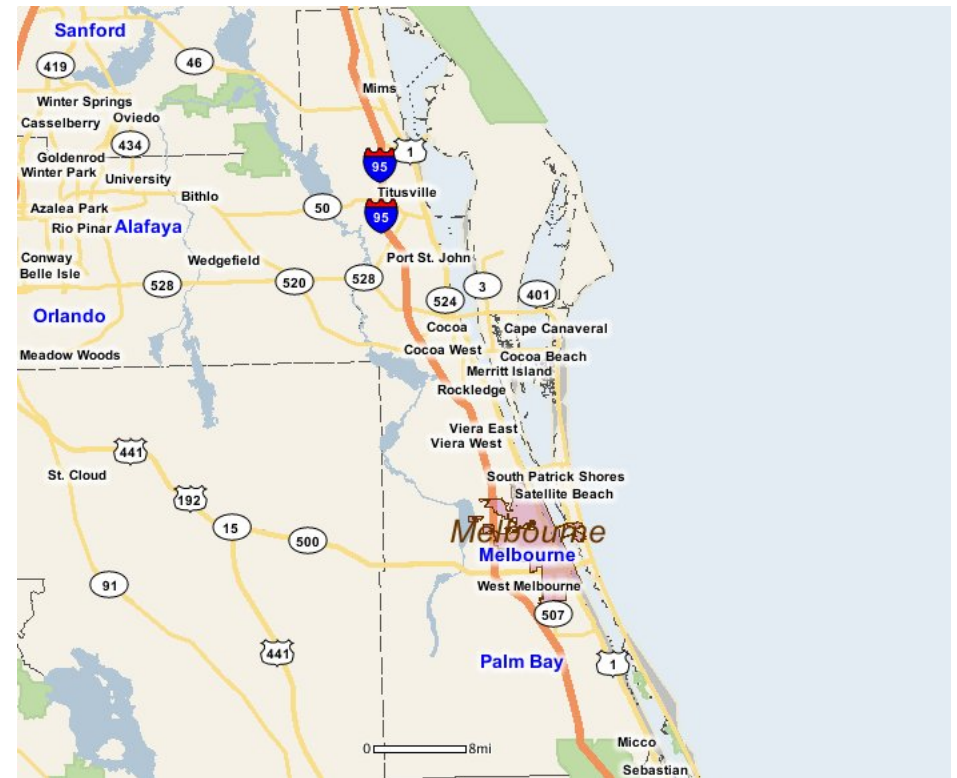
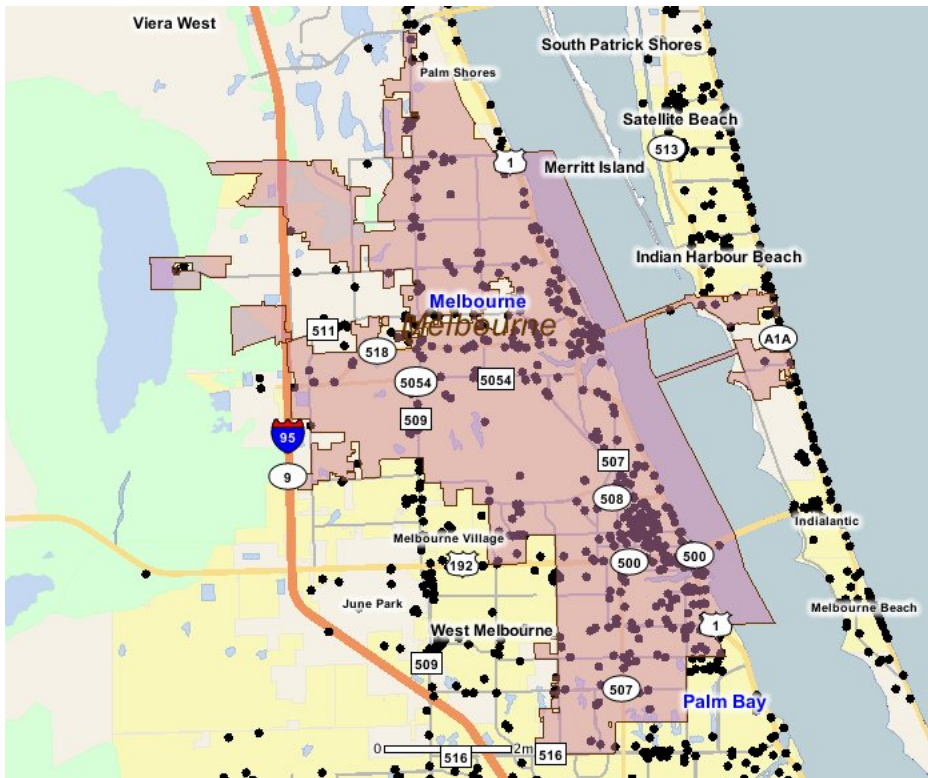
Existing Land Use

Land Use Type	Acres	Percentage
Acreage Not Zoned For Agriculture	456	1.80%
Agricultural	510	2.01%
Centrally Assessed	112	0.44%
Industrial	719	2.84%
Institutional	773	3.05%
Mining	0	0.00%
Other	1,240	4.90%
Public/Semi-Public	3,476	13.73%
Recreation	1	0.00%
Residential	6,813	26.90%
Retail/Office	2,124	8.39%
Row	16	0.06%
Vacant Residential	1,144	4.52%
Vacant Nonresidential	1,134	4.48%
Water	0	0.00%
Parcels With No Values	76	0.30%



- Acreage Not Zoned For Agriculture
- Agricultural
- Centrally Assessed
- Industrial
- Institutional
- Mining
- Other
- Public/Semi-Public
- Recreation
- Residential
- Retail/Office
- Row
- Vacant Residential
- Vacant Nonresidential
- Water
- Parcels With No Values

Location Maps



Community Facilities

The community facilities information below is useful in a variety of ways for environmental evaluations. These community resources should be evaluated for potential sociocultural effects, such as accessibility and relocation potential. The facility types may indicate the types of population groups present in the project study area. Facility staff and leaders can be sources of community information such as who uses the facility and how it is used. Additionally, community facilities are potential public meeting venues.

Assisted Housing (Points)

Facility Name	Address	Zip Code
WINDOVER HEALTH CLUB	310 FITNESS CENTER	32901
PARKWAY PLACE	3040 BENNETT LN	32935
WICKHAM CLUB	2905 KEMBLEWICK DRIVE	32935
THE HARBOR APARTMENTS	1031 HIDDEN HARBOUR DRIVE	32935
ASCENSION MANOR	2960 PINEAPPLE AVENUE	32935
MANATEE COVE	746 MADELYN WAY	32901
WILLOW BROOK VILLAGE	3033 COLLEGE WOOD DRIVE	32934
ABILITIES AT ENGLISH PARK	1225 N WICKHAM RD	32935
BRIARSTONE APARTMENTS	3034 LIPSCOMB ST	32901
ARCH CREEK RUN	173 RACHEL ST	32901
TRINITY TOWERS WEST	650 E STRAWBRIDGE AVE	32901
TRINITY TOWERS EAST	700 E STRAWBRIDGE AVE	32901
CRANE CREEK SENIOR	2309 S. BABCOCK STREET	32901
SABAL PALMS	3001 FOUNTAINHEAD CIRCLE	32934
ABILITIES AT SAN JUAN II	100 SAN JUAN CIRCLE	32935
TRINITY TOWERS SOUTH	615 E NEW HAVEN AVE	32901
SHULL MANOR APARTMENTS	713 E UNIVERSITY BLVD	32901
HICKORY POINTE	2700 CARLSON CIRCLE	32901
THE PARK APARTMENTS	2420 CENTRAL PARK DR	32935

Community Centers (Points)

Facility Name	Address	Zip Code
BOYS & GIRLS CLUB - CENTRAL FLORIDA-TEMPLE - TERRACE BRANCH	1824 TEMPLE TER	32935
AMERICAN LEGION POST 191	2422 S HARBOR CITY BLVD	32901
LIPSCOMB PARK COMMUNITY CENTER	3316 S MONROE ST	32901
BOY SCOUTS OF AMERICA - MELBOURNE SCOUT HOUSE	2209 FRONT ST	32901
AMERICAN LEGION POST 81	2909 S HARBOR CITY BLVD	32901
DISABLED AMERICAN VETERANS CHAPTER 32	2265 N HARBOR CITY BLVD	32935
AMERICAN LEGION POST 163	1795 N HARBOR CITY BLVD	32935
VIETNAM VETERANS OF BREVARD	700 E FEE AVE	32901
CLUB ESTEEM YOUTH AND FAMILY CENTER	3316 MONROE ST	32901
SOUTH BREVARD SENIOR CENTER	618 E MELBOURNE AVE	32902
JUNIOR LEAGUE OF SOUTH BREVARD	1515 ELIZABETH ST	32901
MARINE CORPS LEAGUE DETACHMENT 513	1795 N HARBOR CITY BLVD	32935
MASONIC LODGE - HARBOR CITY 318	1715 AVOCADO AVE	32935
VFW POST 4206 - MELBOURNE	3201 DAIRY RD	32904
KNIGHTS OF COLUMBUS 14573 - MONSIGNOR MARTIN B POWER	2950 N HARBOR CITY BLVD	32935
ITALIAN AMERICAN CLUB OF SOUTH BREVARD	1471 CYPRESS AVE	32935
ASSOCIATION FOR RETARDED CITIZENS (ARC) - BREVARD COUNTY	1110 S HICKORY ST	32901
LIONS CLUB - MELBOURNE	540 E FEE AVE	32901
ELKS LODGE 1744	211 NIEMAN AVE	32901
BOY SCOUTS OF AMERICA - MELBOURNE	1270 N WICKHAM RD	32935
AZAN SHRINE TEMPLE	1591 W EAU GALLIE BLVD	32935
JUNIOR LEAGUE - SOUTH BREVARD	1501 AVOCADO AVE	32935
CHAMBER OF COMMERCE - MELBOURNE - PALM BAY AREA	1005 E STRAWBRIDGE AVE	32901

Facility Name	Address	Zip Code
CRANE COMMUNITY CENTER	1440 MOSSWOOD DR	32935
MELBOURNE CITY - CARVER COMMUNITY CENTER	1092 SWAN ST	32935
GRANT STREET COMMUNITY CENTER	2547 GRANT ST	32935

Cultural Centers (Points)

Facility Name	Address	Zip Code
LIBERTY BELL MEMORIAL MUSEUM	1601 OAK ST	32901
BREVARD ART MUSEUM	1463 HIGHLAND AVE	32936
EASTERN FLORIDA STATE COLLEGE - MELBOURNE CAMPUS - PHILIP L NOHRR LEARNING RESOURCE CENTER	3865 N WICKHAM RD	32935
THE MAXWELL C KING CENTER FOR THE PERFORMING ARTS BREVARD COMMUNITY COLLEGE	3865 N WICKHAM RD	32935
DR MARTIN LUTHER KING JR LIBRARY	955 E UNIVERSITY BLVD	32901
MELBOURNE PUBLIC LIBRARY	540 E FEE AVE	32901
FLORIDA INSTITUTE OF TECHNOLOGY - EVANS LIBRARY/FIT	150 W UNIVERSITY BLVD	32901
FIFTH AVENUE ART GALLERY	1470 HIGHLAND AVE	32901
EAU GALLIE PUBLIC LIBRARY	1521 PINEAPPLE AVE	32935
LOPRESSIONISM GALLERY OF FINE ART	1002 E NEW HAVEN AVE	32901
KEISER UNIVERSITY LIBRARIES MELBOURNE BRANCH LIBRARY	900 S BABCOCK ST	32901
PHOENIX THEATRES ROXY CINEMA GRILL 10	1553 PALM BAY RD	32905
OAKS 10 STADIUM THEATERS	1800 W HIBISCUS BLVD	32901
GLEASON PERFORMING ARTS CENTER - FLORIDA INSTITUTE OF TECHNOLOGY	150 W UNIVERSITY BLVD	32901
CUBA! GALLERY OF FINE ART	1900 S HARBOR CITY BLVD	32901
EVEREST UNIVERSITY - MELBOURNE LIBRARY	2401 N HARBOR CITY BLVD	32935

Fire Stations (Points)

Facility Name	Address	Zip Code
MELBOURNE FIRE DEPARTMENT STATION 71	865 W EAU GALLIE BLVD	32935
MELBOURNE FIRE DEPARTMENT STATION 77	3721 N WICKHAM RD	32935
MELBOURNE FIRE DEPARTMENT STATION 74	1500 HICKORY ST	32901
MELBOURNE FIRE DEPARTMENT STATION 73	1530 TOWER ACCESS RD	32901
BREVARD COUNTY RESCUE STATION 66	1695 AURORA RD	32935
BREVARD COUNTY RESCUE STATION 67 AND 68	11 N NEIMAN AVE	32935
MELBOURNE FIRE DEPARTMENT STATION 75	151 E UNIVERSITY BLVD	32901
MELBOURNE FIRE DEPARTMENT STATION 78	850 EBER BLVD	32901
HOLMES REGIONAL MEDICAL CENTER FIRST FLIGHT AIR AMBULANCE	1350 S HICKORY ST	32901
MELBOURNE FIRE DEPARTMENT STATION 72	2937 SARNO RD	32935
MELBOURNE FIRE DEPARTMENT STATION 76	2470 CROTON RD	32935

Florida Parks and Recreational Facilities (Points)

Facility Name	Address	Zip Code
RUFFNER PARK	2401 COUNTRY CLUB RD	32901
FEE AVENUE PARK	114 FEE AVE E	32901
TRADEWIND PARK	604 CAMELLIA DR	32901
EAU GALLIE LITTLE LEAGUE	1975 STEWART RD	32935
GRANDVIEW SHORES PARK	OLD COLONIAL WAY & VICTORIA AVE	32935
BROTHERS PARK/GRANT STREET CIVIC CENTER	2528 RACE ST	32901
HOLMES PARK	910 E MELBOURNE AVE	32901
LIPSCOMB PARK AND POOL	3316 S MONROE ST	32901
MAGNOLIA MANOR PARK	617 ESPANOLA WAY	32901
MELBOURNE GOLF & COUNTRY CLUB	475 NEW HAVEN AVE W	32901
MASTERTON PARK	1079 MASTERTON ST	32935
ROSSETTER PARK	1295 HIGHLAND AVE	32935
TRIANGLE PARK EAU GALLIE POINT	W EAU GALLIE BLVD & MONTREAL AVE	32935
BABCOCK STREET PARK	402 BABCOCK ST	32935

Facility Name	Address	Zip Code
CRANE CREEK PROMENADE PARK	1005 E MELBOURNE AVE	32901
HOWARD E FUTCH MEMORIAL PARK AT PARADISE BEACH	2301 N HIGHWAY A1A	32903
LAGOON PARK	277 CRESCENT DR	32901
MELBOURNE MILITARY MEMORIAL PARK	1617 OAK ST	32901
CRANE PARK	1550 MOSSWOOD DR	32935
MONO POLE PARK	1955 W HIBISCUS BLVD	32904
SOUTHWEST RECREATION COMPLEX	401 W FLORIDA AVE	32901
BOWE GARDENS PARK (UNDEVELOPED)	ISABELLA DR & W EAU GALLIE BLVD	32935
CARVER PARK	1092 SWAN ST	32935
EAU GALLIE SQUARE	1453 HIGHLAND AVE	32935
BALLARD PARK & BOAT RAMP	924 THOMAS BARBOUR DR	32935
WICKHAM PARK	2785 LEISURE WAY	32935
CAMPBELL PARK	929 E NEW HAVEN AVE	32901
ROBERTS PARK	1312 RIVER DR	32901
KIWANIS PARK AT GEIGER POINT	2205 FRONT ST	32901
OXFORD RIDGE PARK	876 CROTON RD	32935
SHERWOOD PARK AND POOL	2479 POST RD	32935
HONOR AMERICA / WELLS PARK	1601 OAK ST	32901
CLEAVE FRINK PARK	3180 LIPSCOMB ST	32901
CLAUDE EDGE FRONT STREET PARK & BOAT RAMP	2205 FRONT ST	32901
MULLINS PARK	345 CROWN BLVD	32901
HARRY LAWRENCE PARK	E NEW HAVEN AVE & US 192	32901
MALLARDS LANDING GOLF COURSE	2470 CROTON RD	32935
SUNSET PARK	850 SUNSET DR	32935
LINCOLN AV GAZEBO / OVERLOOK PARK	1709 RIVERVIEW DR	32901
BEAN PARK	1210 E MELBOURNE AVE	32901
CAROL WILLIAMS GLANTON PARK	2701 MAIN ST	32901
BABCOCK PARK	S BABCOCK ST & W NEW HAVEN AVE	32901
JIMMY MOORE PARK	2987 SARNO RD	32935
MC GRATH FIELDS	1975 STEWART RD	32935
RIVERVIEW PARK	2400 RIVERVIEW DR	32901
PINEAPPLE PARK	1521 PINEAPPLE AVE	32935
BENNIE J HOPKINS SR PARK	2708 GRANT ST	32901
NDP PARK	JAMES ST	32901
EAU GALLIE CAUSEWAY BOAT RAMP	1457 W EAU GALLIE BLVD	32935
S-02 INDIALANTIC - RADISSON SOUTH BEACH ACCESS	3101 N HWY A1A	32903

Government Building

Facility Name	Address	Zip Code
U S POST OFFICE - MELBOURNE	640 E NEW HAVEN AVE	32901
BREVARD COUNTY PROPERTY APPRAISER	1515 SARNO RD	32935
U S POST OFFICE - EAU GALLIE	681 SAINT CLAIR ST	32935
BREVARD COUNTY HEALTH DEPARTMENT - MELBOURNE CLINIC	2275 S BABCOCK ST	32901
CITY OF MELBOURNE CITY HALL	900 E STRAWBRIDGE AVE	32901
BREVARD COUNTY SUPERVISOR OF ELECTIONS	1515 SARNO RD	32935
BREVARD COUNTY TAX COLLECTOR - MELBOURNE BRANCH OFFICE	1515 SARNO RD	32935
U S POST OFFICE - APOLLO ANNEX	680 N APOLLO BLVD	32935
BREVARD COUNTY - COUNTY COURT - MELBOURNE BRANCH COURTHOUSE	51 S NIEMAN AVE	32901

Healthcare Facilities (Geocoded)

Facility Name	Address	Zip Code
OSLER HMA MEDICAL GROUP, LLC	240 N WICKHAM ROAD, SUITE 108	32935
MELBOURNE HMA MEDICAL GROUP, LLC	1051 EBER BOULEVARD, SUITE 101	32904
MEDICAL ASSOCIATES OF BREVARD	2107 DAIRY ROAD	32904
OMNIHEALTHCARE, SUITE 101	95 BULLDOG BOULEVARD, SUITE 101	32901

Facility Name	Address	Zip Code
MELBOURNE KIDNEY CTR INC	1400 S APOLLO BOULEVARD	32901
CANCER CARE CENTERS OF BREVARD	1430 PINE STREET S, FLOOR 1	32901
CANCER CARE CENTERS OF BREVARD	1430 S PINE STREET, SUITE 201	32901
MEDICAL ASSOCIATES OF BREVARD - PARVESH BANSAL, M.	1400 PINE STREET	32901
HIBISCUS WOMEN'S CARE, LLC	330 HIBISCUS BOULEVARD E	32901
HEALTH FIRST QUICK CARE LLC	1350 S HICKORY STREET, SUITE 103	32901
REGIONAL OBSTETRIC CONSULTANTS	1341 MEDICAL PARK DRIVE, SUITE 102	32901
OPHTHALMOLOGY CTR OF BREV DBA ASC OF BREV	719 E NEW HAVEN AVENUE	32901
FAMILY HOME PHYSICIANS, LLC	720 NEW HAVEN AVENUE E, SUITE 11	32901
MAOB RAJESH DESAI/NIKHITA DHRUV, MD O/B	2290 EAU GALLIE BOULEVARD W, SUITE 100	32935
CHRISTOPHER J PRUSINSKI, DO	1310 W EAU GALLIE BOULEVARD B	32935
ROBERT L BURNS, JR, DMD	481 HARBOR CITY BOULEVARD N	32935
MAOB ESMAT GAYED, M.D.	3021 W EAU GALLIE BOULEVARD 101	32934
DOCCS	2100 N WICKHAM ROAD	32935
JAY E OLSSON, DO, PA	401 N WICKHAM ROAD, SUITE S	32935
BREVARD COUNTY DIALYSIS	4940 STACK BOULEVARD, SUITE C3-7	32901
MELBOURNE TERRACE RESTORATIVE CARE CENTER	251 FLORIDA AVENUE E	32901
BREVARD HEALTH CARE	1735 W HIBISCUS BOULEVARD, SUITE 201	32901
YANQING GU, MD	551 S APOLLO BOULEVARD, SUITE 103	32901
SEDAROS & SEDAROS, MD, PA	25 E SILVER PALM AVENUE	32901
ROXANNE J. GUY MD	111 E HIBISCUS BOULEVARD	32901
MELBOURNE SAME DAY SURGERY	1035 S APOLLO BOULEVARD	32901
MELBOURNE DERMATOLOGY CENTER	333 SHERIDAN ROAD E	32901
HEALTH FIRST MEDICAL GROUP	1350 S HICKORY STREET, SUITE 102	32901
HEALTH FIRST MEDICAL GROUP	1251 S HICKORY STREET	32901
BREVARD CARDIOTHORACIC SURGEONS PA	1355 HICKORY STREET S 202	32901
MAOB ONCOLOGY/HEMATOLOGY-SUMEET CHANDRA, MD & LISA	2290 W EAU GALLIE BOULEVARD, SUITE 202	32935
ARNOLD PALMER PEDS SPECIALTY PRACTICE	2290 W EAU GALLIE BOULEVARD, SUITE 205A	32935
SOUTHLAND SUITES OF MELBOURNE	2680 CROTON ROAD	32935
THE BACK CENTER	2222 S HARBOR CITY BOULEVARD, SUITE 610	32901
JAMES D. KEARNEY, MD	580 N WICKHAM ROAD, SUITE A	32935
MEDICAL ASSOCIATES OF BREVARD	397 N WICKHAM ROAD, SUITE 101	32935
THE PAIN INSTITUTE DBA FLORIDA PAIN	5545 N WICKHAM ROAD, SUITE 104	32940
LAWLER CENTRE COSMETIC SURGERY	1700 W HIBISCUS BOULEVARD	32901
FLORIDA DEPARTMENT OF HEALTH IN BREVARD COUNTY	2275 S BABCOCK STREET	32901
BREVARD SURGERY CTR	665 APOLLO BOULEVARD S	32901
OMNI HEALTHCARE	150 UNIVERSITY BOULEVARD W	32901
JONATHAN T PAINE MD PA	1305 VALENTINE STREET	32901
FLORIDA EYE ASSOCIATES	502 E NEW HAVEN AVENUE	32901
CARNEGIE GARDENS NURSING CENTER	1415 HICKORY STREET S	32901
CRONIN SKIN CANCER CENTER	1399 HARBOR CITY BOULEVARD S	32901
MEDICAL ASSOCIATES OF BREVARD CARDIOLOGY	2200 EAU GALLIE BOULEVARD W, SUITE 200	32935
MEDICAL ASSOCIATES OF BREVARD SURGERY/NEPHROLOGY	2200 W EAU GALLIE BOULEVARD 202B	32935
MEDICAL ASSOC OF BREVARD LLC-GREGORY WASER, MD	1801 SARNO ROAD, SUITE 6	32935
SRI SAI PRIMARY CARE CLINIC	469 N HARBOUR CITY BOULEVARD	32935
JULIE GELMAN, MD, LLC	1499 S HARBOR CITY BOULEVARD, SUITE 302	32901
CANCER CARE CENTERS OF BREVARD	240 N WICKHAM ROAD, SUITE 101	32935
BIO-MEDICAL APPLICATIONS OF FLORIDA DBA-FRESENIUS	3021 W EAU GALLIE BOULEVARD, SUITE 102	32934
HEALTH FIRST PHYSICIANS, INC DBA HEALTH FIRST MEDI	1223 GATEWAY DRIVE, SUITE 2H	32901
HEALTH FIRST MEDICAL GROUP	1696 B W HIBISCUS BOULEVARD	32901
MELBOURNE HMA MEDICAL GROUP, LLC	1160 BROADBAND DRIVE, SUITE 1F	32901
DR BRADFORD WOLK, HIBISCUS WOMEN'S CARE LLC	1674 W HIBISCUS BOULEVARD	32901
QUALITY MEDICAL CARE	675 S BABCOCK STREET	32901

Facility Name	Address	Zip Code
CHANDRA, LLC	20 MELBOURNE AVENUE E, SUITE 104	32901
HEALTH FIRST MEDICAL GROUP, LLC	205 E NASA BOULEVARD	32901
OMNI HEALTH CARE, SUITE 2D	1344 S APOLLO BOULEVARD, SUITE 2D	32901
CENTRAL FLORIDA HAND CENTER	200 E HIBISCUS BOULEVARD	32901
ALDINO G CELLINI, MD, FACC, PA/CARDIAC IMAGING	1601 S APOLLO BOULEVARD, SUITE C	32901
BELINDA E DICKINSON, MD, PA	1325 APOLLO BOULEVARD S	32901
MAOB JOHN C. TURSE, MD	200 MICHIGAN AVENUE	32901
MARK MCTAMMANY, MD	1315 VALENTINE STREET	32901
BREVARD HEALTH CENTER PL	298 MICHIGAN AVENUE, SUITE 101	32901
FOSTER WOMEN'S CARE	1318 PINE STREET S	32901
SPINE ORTHOPEDICS AND REHABILITATION	308 S HARBOR CITY BOULEVARD, SUITE A	32901
HEALTH FIRST MEDICAL GROUP PHYSICIAN SPECIALTY OFF	1350 S HICKORY STREET, SUITE 101	32901
FIRST CHOICE MEDICAL GROUP OF BREVARD	709 S HARBOR CITY BOULEVARD, SUITE 100	32901
OSLER HMA MEDICAL GROUP, LLC	930 S HARBOR CITY BOULEVARD	32901
FOUNTAIN OF YOU	1208 S HARBOR CITY BOULEVARD	32901
MEDICAL ASSOCIATES OF BREVARD-DR JAIN CLINIC ON CALL 24/7	1600 W EAU GALLIE BOULEVARD 1494 AVOCADO AVENUE	32935 32935
NEW BEGINNINGS OB/GYN, PA	336 N BABCOCK STREET 101	32935
OSLER HMA MEDICAL GROUP, LLC	2222 S HARBOR CITY BOULEVARD, FLOOR 4	32901
EAST SHORE NEUROLOGY, PA	240 N WICKHAM ROAD 110	32935
ROSSIGNOL MEDICAL CENTER	3800 W EAU GALLIE BOULEVARD	32934
CONSULATE HEALTH CARE OF MELBOURNE	3033 SARNO ROAD	32934
MEDICAL ASSOCIATES OF BREVARD-INFECTIOUS DISEASE	3040 N WICKHAM ROAD, SUITE 6	32935
ESTHER CLAYTON, MD, GYNECOLOGY	410 N WICKHAM ROAD, SUITE 201	32935
POONAM MISHRA, DO	401 N WICKHAM ROAD, SUITE H	32935
CHRISTINE THOMAS, MD	2571 W EAU GALLIE BOULEVARD, SUITE 1	32935
HEALTH FIRST MEDICAL GROUP	3661 S BABCOCK STREET	32901
HEALTH FIRST MEDICAL GROUP, LLC	1223 GATEWAY DRIVE	32901
SANDRA SHRADER MD DERMATOLOGY, LLC	1700 W HIBISCUS BOULEVARD	32901
MELBAY HEALTHCARE	950 S APOLLO BOULEVARD	32901
JOSEPH J. CHANDA, M.D., P.A.	207 E SILVER PALM AVENUE	32901
HEALTH FIRST MEDICAL GROUP	1405 PINE STREET	32901
ARTFUL AWAKENINGS COSMETIC SURGERY CENTER	400 E STRAWBRIDGE AVENUE	32901
ATLANTIC CARDIONET	1305 S HICKORY STREET	32901
MELBOURNE SURGERY CENTER	1340 MEDICAL PARK DRIVE, SUITE 101	32901
KAPLAN COSMETIC SURGERY, INC	2351 W EAU GALLIE BOULEVARD	32935
BREVARD HEALTH ALLIANCE	2120 SARNO ROAD	32934
ROCKLEDGE HMA MEDICAL GROUP LLC	240 WICKHAM ROAD N, SUITE 204	32935
SHARON DILLON, MD, PA	3150 WICKHAM ROAD N 6	32935
ATLANTIS PAIN CARE	3150 N WICKHAM ROAD, SUITE 9	32935
SOVEREIGN HEALTHCARE OF ATLANTIC SHORES LLC	4251 STACK BOULEVARD	32901
THE EYE INSTITUTE FOR MEDICINE & SURGERY	1995 W NASA BOULEVARD	32904
TEPAS HEALTHCARE	1140 BROADBAND DRIVE	32901
PORTER PREMIERE DERMATOLOGY & SURGERY CENTER	1515 W NASA BOULEVARD, SUITE 100	32901
BREVARD VISION CARE	2420 BABCOCK STREET S	32901
SURGERY CENTER OF MELBOURNE THE	1401 S APOLLO BOULEVARD, SUITE B	32901
ADVANCED PAIN AND NEUROMUSCULAR CONSULTANTS OF BRE	307 E NEW HAVEN AVENUE	32901
ZIPPER UROGYNECOLOGY ASSOCIATES	1130 S HARBOR CITY BOULEVARD, SUITE 101	32901
HEALTH FIRST MEDICAL GROUP	1250 S HARBOR CITY BOULEVARD	32901
MAURICIO J. CASTELLON M.D.	1499 HARBOR CITY BOULEVARD S, SUITE 301	32901
CRANE CREEK SURGERY CENTER	2222 S HARBOR CITY BOULEVARD, SUITE 540	32901
BEACHSIDE DERMATOLOGY	2571 W EAU GALLIE BOULEVARD, SUITE 2	32901
THE EYE INSTITUTE FOR MEDICINE & SURGERY	1995 W NASA BOULEVARD, SUITE 200	32904
HARRIS FAMILY MEDICAL CENTER	1800 W HIBISCUS BOULEVARD 101	32901

Facility Name	Address	Zip Code
PEDIATRICS IN BREVARD	1755 W HIBISCUS BOULEVARD	32901
DEVOE ALLERGY & ASTHMA CLINIC	1515 AIRPORT BOULEVARD	32901
MELBOURNE WALK IN CLINIC	15 E HIBISCUS AVENUE	32901
MELBOURNE KIDNEY CENTER	1400 S APOLLO BOULEVARD	32901
HEALTH FIRST MEDICAL GROUP, LLC	1324 VALENTINE STREET	32901
BREVARD ELECTRODIAGNOSTIC MEDICINE	301 SHERIDAN ROAD	32901
MELBOURNE GI CENTER	1051 S HICKORY STREET, SUITE K	32901
HEALTH FIRST CANCER CARE	1130 S HICKORY STREET, SUITE B	32901
MEDICAL ASSOC. OF BREVARD	2290 W EAU GALLIE BOULEVARD, SUITE 205	32935
MELBOURNE HMA MEDICAL GROUP, LLC	2200 W EAU GALLIE BOULEVARD, SUITE 202A	32935
PINNACLE EYE CENTER	1649 W EAU GALLIE BOULEVARD, SUITE 100	32935
ERIC L LANG, DO, LC	1301 W EAU GALLIE BOULEVARD, SUITE 112	32935
UNCONDITIONAL LOVE, INC (DBA) COMPREHENSIVE HEALTH	1495 N HARBOR CITY BOULEVARD	32935
CLEVENS CENTER FOR FACIAL COSMETIC SURGERY	707 W EAU GALLIE BOULEVARD	32935
EAU GALLIE WALK-IN CLINIC	1403 HIGHLAND AVENUE	32935
DIAZ PLASTIC SURGERY	1513 S HARBOR CITY BOULEVARD	32901
OSLER HMA MEDICAL GROUP, LLC	240 N WICKHAM ROAD, FLOOR 3	32935
JAY MEDICAL, PLLC	3972 W EAU GALLIE BOULEVARD	32934
OB/GYN SPECIALISTS OF BREVARD	1555 W NASA BOULEVARD	32901
SPACE COAST VASCULAR, INC	655 S APOLLO BOULEVARD, SUITE 2	32901
BREVARD HEALTH ALLIANCE SILVER PALM CLINIC	17 SILVER PALM AVENUE	32901
MELBOURNE DIALYSIS	2235 BABCOCK STREET S	32901
FLORIDA PEDIATRIC GROUP, PA	25 E SILVER PALM AVENUE	32901
OMNI HEALTHCARE BREVARD HEME/ONC	1344 APOLLO BOULEVARD, SUITE 303	32901
OMNI HEALTHCARE	1334 VALENTINE STREET	32901
NEUROLOGY CLINIC	1333 PINE STREET S	32901
AVANTE AT MELBOURNE	1420 S OAK STREET	32901
LIFE CARE CENTER OF MELBOURNE	606 E SHERIDAN ROAD	32901
OSLER HMA MEDICAL GROUP, LLC	2222 S HARBOR CITY BOULEVARD, SUITE 510	32901

Hospitals (Points)

Facility Name	Address	Zip Code
HOLMES REGIONAL MEDICAL CENTER	1350 S HICKORY ST	32901
WUESTHOFF MEDICAL CENTER - MELBOURNE	250 N WICKHAM RD	32935
KINDRED HOSPITAL MELBOURNE	765 W NASA BLVD	32901
CIRCLES OF CARE (SHERIDAN OAKS) PSYCHIATRIC HOSPITAL	400 E SHERIDAN RD	32901
HEALTHSOUTH SEA PINES REHABILITATION HOSPITAL	101 E FLORIDA AVE	32901

Law Enforcement Facilities (Points)

Facility Name	Address	Zip Code
US CUSTOMS AND BORDER PROTECTION - USER FEE AIRPORT-ORLANDO MELBOURNE	ONE AIR TERMINAL PKWY	32901
MELBOURNE SQUARE POLICE DEPARTMENT - SUBSTATION	1700 W NEW HAVEN AVE	32904
BREVARD COUNTY SHERIFF'S OFFICE - SOUTH PRECINCT	1515 SARNO RD (BLDG B)	32935
MELBOURNE INTERNATIONAL AIRPORT POLICE DEPARTMENT	ONE AIR TERMINAL PKWY	32901
BREVARD COUNTY SHERIFF'S OFFICE - COURT SERVICES	50 NEIMAN AVE	32901
MELBOURNE POLICE DEPARTMENT - COMMUNICATIONS AND CRIMINAL INVESTIGATIONS DIVISIONS	701 S BABCOCK ST	32901
MELBOURNE POLICE DEPARTMENT - HEADQUARTERS	650 N APOLLO BLVD	32935

Mobile Home Parks in Florida

Facility Name	Address	Zip Code
TAN TARA MHP	2028 N STEWART RD LOT 1	32935

Facility Name	Address	Zip Code
LANTERN VILLAGE	2190 AURORA RD	32935
LAKWOOD VILLAGE	3171 HANSON AVE	32901
SHADY OAK	1920 STEWART ROAD	32936
TROPICAL HAVEN	1205 S EDDIE ALLEN RD	32901
MEADOWS MOBILE HOME PARK THE	1100 ESTATES LN	32934
BROADVIEW MOBILE HOME PARK	1701 POST RD	32935
LUCKY CLOVER MOBILE HOME PARK	635 E EAU GALLIE BLVD	32937
HOLLANDALE MOBILE HOME PARK	2600 PINEAPPLE AVE	32935
ROCKY WATER PARK	2664 PINEAPPLE AVE	32935

Public and Private Schools (Points)

Facility Name	Address	Zip Code
JOURNEYS ACADEMY EDUCATIONAL PATHWAYS TO SUCCESS	1855 LANSING STREET	32935
PALM BAY MAGNET SENIOR HIGH SCHOOL	101 PIRATE LANE	32901
HOLY FAMILY SCHOOL	1244 WATER ST	32935
FIRST UNITED METHODIST PRESCHOOL	110 E NEW HAVEN AVE	32901
DR. W.J. CREEL ELEMENTARY SCHOOL	2000 GLENWOOD DRIVE	32935
EMBRY-RIDDLE AERONAUTICAL UNIVERSITY - SPACE COAST	4450 W EAU GALLIE BLVD	32934
PECULIAR PRIESTHOOD CHRISTIAN ACADEMY	2637 S HARBOR CITY BLVD	32901
NO LIMITS ACADEMY INC	4450 W EAU GALLIE BLVD	32934
LONGLEAF ELEMENTARY SCHOOL	4290 NORTH WICKHAM ROAD	32934
KIDS PLACE	4950 DAIRY RD	32904
CENTRAL BAPTIST CHURCH CHILD CARE	2503 COUNTRY CLUB RD	32901
SOUTH AREA ADULT EDUCATION-DAY PROGRAM	1362 S BABCOCK ST	32901
RIVERSIDE CHRISTIAN ACADEMY	3333 N RIVERSIDE DRIVE	32903
SABAL ELEMENTARY SCHOOL	1401 WICKHAM ROAD	32935
LYNDON B. JOHNSON MIDDLE SCHOOL	2155 CROTON RD	32935
COMMUNITY CHRISTIAN SCHOOL INC.	1616 FERNDALE AVENUE	32935
HARBOR CITY ELEMENTARY SCHOOL	1377 SARNO RD	32935
MELBOURNE PALM BAY SDA CHRISTIAN SCHOOL	210 W NEW HAVEN AVENUE	32901
OUR LADY OF LOURDES	420 E FEE AVENUE	32901
FLORIDA INSTITUTE OF TECHNOLOGY	1308 RIVER DR	32901
NEW COVENANT CHRISTIAN SCHOOL	1990 WEST NEW HAVEN AVE	32904
WADE CHRISTIAN ACADEMY	4300 N WICKHAM RD	32935
SOUTH AREA ALTERNATIVE LEARNING CENTER	2175 N WICKHAM ROAD	32935
EASTERN FLORIDA STATE COLLEGE - MELBOURNE CAMPUS	3865 N WICKHAM ROAD	32935
BRIGHT HORIZONS ACADEMY	550 E. FLORIDA AVE	32901
ASCENSION CATHOLIC SCHOOL	2950 NORTH HARBOR CITY BLVD	32935
CROTON ELEMENTARY SCHOOL	1449 CROTON RD	32935
UNIVERSITY OF CENTRAL FLORIDA - MELBOURNE CAMPUS	3865 N WICKHAM RD	32935
UNIVERSITY PARK ELEMENTARY SCHOOL	500 W UNIVERSITY BLVD	32901
SHILOH CHRISTIAN ACADEMY	155 E UNIVERSITY BLVD	32901
FLORIDA AIR ACADEMY	1950 S ACADEMY DRIVE	32901
COMMUNITY CHURCH OF GOD SCHOOL	451 AUDUBON DR	32901
BERRI PATCH	1320 LAKE WASHINGTON ROAD	32935
EVEREST UNIVERSITY	2190 SARNO RD	32935
RISING STARS ACADEMY	2155 SARNO RD	32935
SHERWOOD ELEMENTARY SCHOOL	2541 POST RD	32935
MELBOURNE CENTRAL CATHOLIC HIGH SCHOOL	100 E FLORIDA AVE	32901
STONE MAGNET MIDDLE SCHOOL	1101 E UNIVERSITY BLVD	32901
KEISER UNIVERSITY-MELBOURNE	900 S BABCOCK ST	32901
MELBOURNE SENIOR HIGH SCHOOL	74 BULLDOG BLVD	32901
R.F.M. CHRISTIAN ACADEMY	777 S APOLLO BLVD	32901
ROLLING READERS SPACE COAST	1948 PINEAPPLE AVE	32935
ROY ALLEN ELEMENTARY SCHOOL	2601 FOUNTAINHEAD BLVD	32935
FLORIDA INSTITUTE OF TECHNOLOGY	150 WEST UNIVERSITY BOULEVAR	32901

Facility Name	Address	Zip Code
EAU GALLIE HIGH SCHOOL	1400 COMMODORE BLVD	32935
SANCTA FAMILIA ACADEMY	1204 N HARBOR CITY BLVD	32935
WAVECREST ACADEMY	610 YOUNG ST	32935
WESTSHORE JUNIOR/SENIOR HIGH SCHOOL	250 WILDCAT ALLEY	32935

Religious Centers (Points)

Facility Name	Address	Zip Code
BOWE GARDENS BAPTIST CHURCH	2700 SARNO ROAD	32935
RIVER RUN CHRISTIAN CHURCH	1660 CROTON ROAD	32935
HOLY TRINITY EPISCOPAL	1830 S BABCOCK STREET	32901
SHILOH CHRISTIAN CENTER	155 E UNIVERSITY BOULEVARD	32901
OUR LADY OF LOURDES CATHOLIC	420 E FEE AVENUE	32901
GREATER FAITH TEMPLE CHURCH	2701 LEONARD WEAVER BOULEVARD	32901
NEW MOUNT ZION BAPTIST CHURCH	624 WALLS STREET	32901
ST JOHN'S MISSIONARY BAPTIST	1970 MAGNOLIA STREET	32935
GREATER LIFE BAPTIST CHURCH	2008 PINEAPPLE AVENUE	32935
ST PAUL'S UNITED METHODIST CHURCH	1591 HIGHLAND AVENUE	32935
LIFE HOUSE	436 NIEMAN AVENUE	32901
FIRST BAPTIST CHURCH OF S BREVARD	4300 N WICKHAM ROAD	32935
NEW HOPE CHURCH - SHERWOOD PARK BAPTIST CHURCH	2676 POST ROAD	32935
CHURCH ON THE ROCK	4028 S BABCOCK STREET	32901
IGLESIA EL FARO	1905 WESTWOOD BOULEVARD	32901
FIRST CHRISTIAN CHURCH-DISCIPLES OF CHRIST	2010 SOUTH BABCOCK STREET	32901
MELBOURNE FIRST CHURCH OF THE NAZARENE	2745 SOUTH BABCOCK STREET	32901
ISLAMIC SOCIETY OF BREVARD COUNTY	550 E FLORIDA AVE	32901
FIRST CHURCH OF CHRIST SCIENTIST MELBOURNE	600 EAST MELBOURNE AVENUE	32901
GRACE BAPTIST CHURCH	628 PALMETTO AVENUE	32901
FIRST CHURCH OF GOD IN CHRIST	2425 LIPSCOMB STREET	32901
THE WAY CHURCH	399 EAST EAU GALLIE BOULEVARD	32937
PROMISELAND CHURCH	1855 LANSING STREET	32935
CROSSROADS COMMUNITY CHURCH	2436 CROTON ROAD	32935
CATHOLIC CHURCH OF OUR LADY OF LOURDES	1626 OAK STREET	32901
OUR LADY OF LOURDES PARISH	1710 HICKORY ST	32901
SCOTT CHAPEL UNITED METHODIST	2510 GRANT STREET	32901
UNITY CHURCH OF MELBOURNE	1745 TRIMBLE ROAD	32934
AMERICAN MISSIONARY BAPTIST CHURCH	1808 PALM RIDGE ROAD	32935
NORTHSIDE PRESBYTERIAN CHURCH	1400 LAKE WASHINGTON ROAD	32935
ASCENSION PARISH	2950 N HARBOR CITY BLVD	32935
LIGHTHOUSE ASSEMBLY OF GOD	26 W FEE AVENUE	32901
CORNERSTONE CHURCH OF GOD	311 E HIBISCUS BOULEVARD	32901
TRIUMPH THE CHURCH & KINGDOM	1105 CHURCH STREET	32901
OUTREACH EVANGELISTIC CHURCH	2429 SOLONA STREET	32901
NEWNESS OF LIFE	1300 PROSPECT AVE	32901
MAIN STREET CHURCH OF GOD	2818 MAIN STREET	32901
LIFETIME CHRISTIAN CENTER	2904 SOUTH HARBOR CITY BOULEVARD	32901
MIRACLE DELIVERANCE HEALING	1500 FLORIDA AVE E	32901
JOHNSON'S MIRACLE TEMPLE CHURCH	1135 DOVE ST	32935
ARCH ANGEL MICHAEL COPTIC CHURCH	1653 GUAVA AVENUE	32935
ST JOHN'S EPISCOPAL CHURCH	610 YOUNG STREET	32935
SHEPHERD'S HEART MINISTRIES	511 N HARBOR CITY BOULEVARD	32935
RIVERSIDE BAPTIST CHURCH	3333 N RIVERSIDE DRIVE	32903
FIRST FREE WILL BAPTIST CHURCH	938 LYTTON ROAD	32934
CALVARY BAPTIST CHURCH	2980 N WICKHAM ROAD	32935
CENTRAL BAPTIST CHURCH	2503 COUNTRY CLUB RD	32901
ST PAUL LUTHERAN CHURCH	105 W HIBISCUS BOULEVARD	32901
MACEDONIA MISSIONARY BAPTIST CHURCH	2729 LIPSCOMB STREET	32901
CHRISTIAN FELLOWSHIP	1409 HOAG AVENUE	32901
BREVARD HINDU MANDIR	1517 AVENIDA DEL RIO	32901

Facility Name	Address	Zip Code
CHURCH OF JESUS CHRIST OF LATTER DAY SAINTS	1145 CREEL STREET	32935
CHURCH OF CHRIST	1079 SARNO ROAD	32935
WARD CHAPEL - MELBOURNE	2100 AVOCADO AVENUE	32935
FIRST ASSEMBLY OF GOD MELBOURNE	801 MASTERSON STREET	32935
LUTHERAN CHURCH OF REDEEMER	12 E AVENUE A	32901
COMMUNITY CHURCH OF GOD	455 AUDUBON DRIVE	32901
HARBOR CITY BAPTIST CHURCH	2711 N HARBOR CITY BOULEVARD	32935
EMMANUEL UNITED METHODIST CHURCH	2800 W EAU GALLIE BOULEVARD	32935
CHAPEL OF THE HOLY FAMILY	3385 N WICKHAM ROAD	32935
KOL MASHIACH MESSIANIC	1621 LAKE WASHINGTON ROAD	32935
CHURCH OF THE GOOD SHEPHERD	810 W FLORIDA AVENUE	32901
SEVENTH-DAY ADVENTIST CHURCH	210 W NEW HAVEN AVENUE	32901
HOLY GHOST CENTER MINISTRIES	529 BURR ST	32901
FULL GOSPEL DELIVERANCE CHURCH OF MELBOURNE	2419 STONE STREET	32901
NEW LIFE ASSEMBLY OF GOD	770 N APOLLO BOULEVARD	32935
ST JAMES BAPTIST BAPTIST	1835 BUNCHE ST	32935
CHRISTIAN SCIENCE READING ROOM SECOND CHURCH	565 MONTREAL AVENUE	32935
CHURCH AT MELBOURNE	300 CHERRY STREET	32901
FIRST KOREAN BAPTIST CHURCH	1841 TRIMBLE RD	32934
ST TIMOTHY LUTHERAN CHURCH	1903 CROTON ROAD	32935
EAU GALLIE FIRST BAPTIST CHURCH	1501 WEST EAU GALLIE BLVD	32935
PEOPLE OF DESTINY CHRISTIAN FELLOWSHIP	1619 FERNDAL AVENUE	32935
MARANATHA CHRISTIAN CENTER	3506 N HARBOR CITY BOULEVARD	32935
ART OF CONVENT WORSHIP CENTER	2715 N HARBOR CITY BOULEVARD	32935
MELBOURNE FIRST BAPTIST CHURCH	3301 DAIRY RD	32904
CHRISTIAN SCIENCE READING ROOM FIRST CHURCH	2007 VERNON PLACE	32901
ALLEN CHAPEL AFRICAN METHODIST EPISCOPAL CHURCH	2416 SOUTH LIPSCOMB STREET	32901
ETERNAL LIFE FELLOWSHIP DELIVERANCE	1106 LINE ST	32901
DESTINY LIFE CHURCH	3400 RANDOLPH ST	32901
CHIEF CORNER STONE MISSIONARY BAPTIST CHURCH	3125 MAIN STREET	32901
VINEYARD CHRISTIAN FELLOWSHIP	1052 CYPRESS AVENUE	32935
FIRST UNITED METHODIST CHURCH OF MELBOURNE	110 EAST NEW HAVEN AVENUE	32901
CHURCH OF GOD	613 REDDICK STREET	32901
HIS PLACE MINISTRIES	1824 S HARBOR CITY BOULEVARD	32901
FULL GOSPEL DELIVERANCE CHURCH	1006 BROTHERS AVE	32901
PALMDALE PRESBYTERIAN CHURCH	684 N HARBOR CITY BOULEVARD	32935

Social Services (Geocoded)

Facility Name	Address	Zip Code
BREVARD COUNTY SALVATION ARMY	1080 SOUTH HICKORY STREET	32901
BREVARD COUNTY	326 CROTON ROAD	32935
FLORIDA ADOPTION CENTER LLC	1600 SARNO ROAD	32935
BREVARD CO._BOTH_HA CODE: FL020	1401 GUAVA AVE	32935
MELBOURNE_LOW-RENT_HA CODE: FL056	4000 N. RIVERSIDE DR	32937
MELBOURNE SALVATION ARMY	1080 HICKORY ST	32901
COMMUNITY HOUSING INITIATIVE INC	3033 COLLEGE WOOD DR	32934
BREVARD FAMILY PARTNERSHIP	2301 W. EAU GALLIE BLVD	32935
MELBOURNE UNIT 13B	1049 EBER RD.	32904
SOUTH BREVARD SHARING CENTER	17 EAST HIBISCUS BOULEVARD	32901
BREVARD COUNTY HEALTH DEPT WIC MELBOURNE	2275 S BABCOCK STREET	32901

US Census Places

Facility Name
Melbourne

Facility Name

Indian Harbour Beach

Palm Bay

Melbourne Village

Palm Shores

West Melbourne

Merritt Island

Veteran Organizations and Facilities (Points)

Facility Name	Address	Zip Code
VFW POST 4206 - MELBOURNE	3201 DAIRY ROAD	32904
AMERICAN LEGION POST 191	2422 S HARBOR CITY BLVD	32901
MARINE CORPS LEAGUE DETACHMENT 513	1795 N HARBOR CITY BLVD	32935
AMERICAN LEGION POST 81	2909 S HARBOR CITY BLVD	32901
DISABLED AMERICAN VETERANS CHAPTER 32	2265 N HARBOR CITY BOULEVARD	32935
VIETNAM VETERANS OF BREVARD	700 E FEE AVENUE	32901
AMERICAN LEGION POST 163	1795 N HARBOR CITY BOULEVARD	32935
VETERANS AFFAIRS VET CENTER MELBOURNE	2098 SARNO ROAD	32935

Block Groups

The following Census Block Groups were used to calculate demographics for this report.

1990 Census Block Groups

120090713011, 120090641213, 120090645002, 120090650211, 120090643022, 120090642006, 120090647004, 120090651231, 120090664003, 120090641222, 120090650222, 120090642003, 120090647007, 120090649011, 120090649021, 120090648003, 120090648004, 120090651012, 120090663015, 120090641014, 120090641223, 120090713012, 120090641211, 120090641214, 120090641226, 120090643021, 120090643024, 120090647003, 120090649013, 120090642007, 120090651212, 120090651014, 120090663012, 120090641221, 120090646004, 120090641224, 120090644001, 120090643012, 120090647005, 120090648001, 120090651013, 120090649024, 120090663011, 120090646005, 120090642002, 120090643023, 120090647006, 120090647001, 120090649022, 120090642001, 120090646002, 120090650221, 120090644002, 120090649012, 120090647008, 120090651221, 120090663013, 120090641011, 120090645001, 120090643013, 120090650213, 120090642004, 120090642005, 120090642008, 120090651011, 120090649023, 120090651232, 120090641212, 120090646003, 120090641225, 120090651015, 120090648002, 120090641015

2000 Census Block Groups

120090645002, 120090641224, 120090644002, 120090650213, 120090642005, 120090649014, 120090651014, 120090713011, 120090648002, 120090651231, 120090651233, 120090663012, 120090641222, 120090650211, 120090643021, 120090650222, 120090643022, 120090649012, 120090647004, 120090649022, 120090641014, 120090641214, 120090641223, 120090651012, 120090642001, 120090646001, 120090647002, 120090643023, 120090642004, 120090651011, 120090649021, 120090645001, 120090642002, 120090643024, 120090651211, 120090647003, 120090641011, 120090641021, 120090641022, 120090641212, 120090646003, 120090643012, 120090643011, 120090649013, 120090651212, 120090648001, 120090649023, 120090664003, 120090663011, 120090641221, 120090646002, 120090641211, 120090650221, 120090647001, 120090649024, 120090651232, 120090641013, 120090641213, 120090644001, 120090646004, 120090642003, 120090649011, 120090642006, 120090651013, 120090651221

2010 Census Block Groups

120090650213, 120090649012, 120090651213, 120090651231, 120090641022, 120090645002, 120090649021, 120090649023, 120090641261, 120090641251, 120090641232, 120090642011, 120090648001, 120090647005, 120090649014, 120090649022, 120090651253, 120090641274, 120090641021, 120090641241, 120090641242, 120090664001, 120090647004, 120090647001, 120090641262, 120090644003, 120090641271, 120090641231, 120090643011, 120090644001, 120090641272, 120090646014, 120090651211, 120090651212, 120090648002, 120090646021, 120090641252, 120090645001, 120090643013, 120090641233, 120090643021, 120090644002, 120090642012, 120090650221, 120090650222, 120090651223, 120090646022, 120090642022, 120090643023, 120090642023, 120090663012, 120090663013, 120090651251, 120090649013, 120090651252, 120090651241, 120090651242, 120090651232, 120090642021, 120090643022, 120090647002, 120090664003, 120090713012, 120090641281, 120090650211, 120090649011, 120090651221, 120090641253, 120090646012, 120090643012, 120090641243, 120090647003, 120090663011

2017 Census Block Groups

120090647005, 120090651251, 120090651213, 120090651231, 120090641253, 120090644003, 120090643022, 120090647002, 120090663013, 120090713012, 120090651211, 120090649022, 120090648002, 120090641262, 120090641251, 120090641241, 120090641231, 120090641232, 120090642022, 120090663011, 120090651212, 120090649013, 120090651241, 120090649023, 120090641022, 120090643023, 120090664001, 120090650211, 120090647004, 120090647001, 120090651221, 120090651223, 120090651232, 120090641021, 120090646022,

120090641271, 120090643012, 120090641243, 120090663012, 120090649011, 120090651253, 120090641261, 120090646012, 120090645002, 120090644002, 120090642011, 120090664003, 120090646014, 120090650221, 120090649012, 120090651252, 120090649021, 120090641252, 120090650222, 120090649014, 120090641274, 120090644001, 120090641242, 120090641233, 120090642023, 120090642012, 120090648001, 120090641281, 120090650213, 120090651242, 120090646021, 120090643011, 120090645001, 120090641272, 120090643013, 120090642021, 120090643021, 120090647003

Data Sources

Area

The geographic area of the community based on a user-specified community boundary or area of interest (AOI) boundary.

Jurisdiction

Jurisdiction(s) includes local government boundaries that intersect the community or AOI boundary.

Demographic Data

Demographic data reported under the headings General Population Trends, Race and Ethnicity Trends, Age Trends, Income Trends, Educational Attainment Trends, Language Trends, and Housing Trends is from the U.S. Decennial Census (1990, 2000) and the American Community Survey (ACS) 5-year estimates from 2006-2010 and 2013-2017. The data was gathered at the block group level for user-specified community boundaries and AOIs, and at the county level for counties. Depending on the dataset, the data represents 100% counts (Census Summary File 1) or sample-based information (Census Summary File 3 or ACS).

About the Census Data:

User-specified community boundaries and AOIs do not always correspond precisely to block group boundaries. In these instances, adjustment of the geographic area and data for affected block groups is required to estimate the actual population. To improve the accuracy of such estimates in the SDR report, the census block group data was adjusted to exclude all census blocks with a population of two or fewer. These areas were eliminated from the corresponding years' block groups. Next, the portion of the block group that lies outside of the community or AOI boundary was removed. The demographics within each block group were then recalculated, assuming an equal area distribution of the population. Note that there may be areas where there is no population.

Use caution when comparing the 100% count data (Decennial Census) to the sample-based data (ACS). In any given year, about one in 40 or 2.5% of U.S. households will receive the ACS questionnaire. Over any five-year period, about one in eight households will receive the questionnaire, as compared to about one in six that received the long form questionnaire for the Decennial Census 2000. (Source: <http://mcdc.missouri.edu/pub/data/acs/Readme.shtml>) The U.S. Census Bureau provides help with this process:

<https://www.census.gov/programs-surveys/acs/guidance/comparing-acs-data/2017.html>

Use caution when interpreting changes in Race and Ethnicity over time. Starting with the 2000 Decennial Census, respondents were given a new option of selecting one or more race categories. Also in 2000, the placement of the question about Hispanic origin changed, helping to increase responsiveness to the Hispanic-origin question. Because of these and other changes, the 1990 data on race and ethnicity are not directly comparable with data from later censuses. (Source: <http://www.census.gov/prod/2001pubs/c2kbr01-1.pdf>;
<http://www.census.gov/pred/www/rpts/Race%20and%20Ethnicity%20FINAL%20report.pdf>)

The "Minority" calculations are derived from Census and ACS data using both the race and ethnicity responses. On this report, "Minority" refers to individuals who list a race other than White and/or list their ethnicity as Hispanic/Latino. In other words, people who are multi-racial, any single race other than White, or Hispanic/Latino of any race are considered minorities.

Disability data is not included in the 2010 Decennial Census, or the 2006-2010 ACS. This data is available in the 2013-2017 ACS.

Because of changes made to the Census and ACS questions between 1990 and 2017, disability variables should not be compared from year to year. For example: 1) With the 1990 data the disabilities are listed as a "work disability" while this distinction is not made with 2000 or 2017 ACS data; 2) The 2017 ACS data includes the institutionalized population (e.g. persons in prisons and group homes), while this population is not included in 1990 or 2000; 3) the age groupings changed over the years.

Please take the following two concerns into account when viewing this data: 1) With the 1990 data the disabilities are listed as a "work disability" while this distinction is not made with 2000 or 2017 ACS data; 2) The 2017 ACS data includes the institutionalized population (e.g. persons in prisons and group homes), while this population is not included in 1990 or 2000.

The category Bachelor's Degree or Higher under the heading Educational Attainment Trends is a subset of the category High School Graduate or Higher.

Income of households. This includes the income of the householder and all other individuals 15 years old and over in the household, whether they are related to the householder or not. Because many households consist of only one person, average household income is usually less than average family income.

Income of families. In compiling statistics on family income, the incomes of all members 15 years old and over related to the householder are summed and treated as a single amount.

Age Trends median age for 1990 is not available.

Land Use Data

The Land Use information Indicates acreages and percentages for the generalized land use types used to group parcel-specific, existing land use assigned by the county property appraiser office according to the Florida Department of Revenue land use codes.

Community Facilities Data

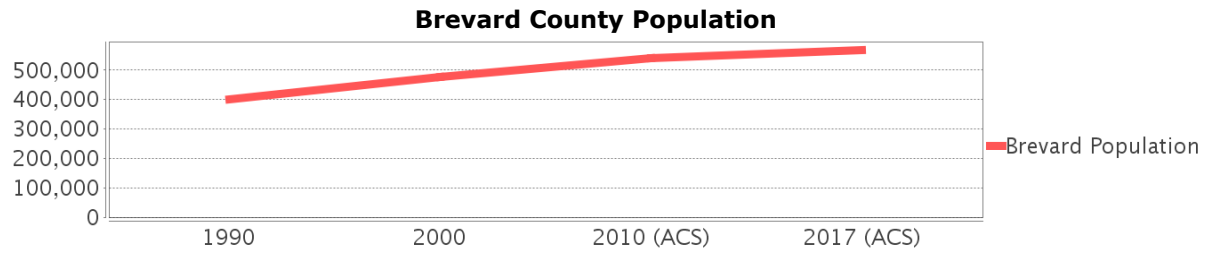
- Assisted Rental Housing Units - Identifies multifamily rental developments that receive funding assistance under federal, state, and local government programs to offer affordable housing as reported by the Shimberg Center for Housing Studies, University of Florida.
- Mobile Home Parks - Identifies approved or acknowledged mobile home parks reported by the Florida Department of Business and Professional Regulation and Florida Department of Health.
- Migrant Camps - Identifies migrant labor camp facilities inspected by the Florida Department of Health.
- Group Care Facilities - Identifies group care facilities inspected by the Florida Department of Health.
- Community Center and Fraternal Association Facilities - Identifies facilities reported by multiple sources.
- Law Enforcement Correctional Facilities - Identifies facilities reported by multiple sources.
- Cultural Centers - Identifies cultural centers including organizations, buildings, or complexes that promote culture and arts (e.g., aquariums and zoological facilities; arboreta and botanical gardens; dinner theaters; drive-ins; historical places and services; libraries; motion picture theaters; museums and art galleries; performing arts centers; performing arts theaters; planetariums; studios and art galleries; and theater producers stage facilities) reported by multiple sources.
- Fire Department and Rescue Station Facilities - Identifies facilities reported by multiple sources.

- Government Buildings - Identifies local, state, and federal government buildings reported by multiple sources.
- Health Care Facilities - Identifies health care facilities including abortion clinics, dialysis clinics, medical doctors, nursing homes, osteopaths, state laboratories/clinics, and surgicenters/walk-in clinics reported by the Florida Department of Health.
- Hospital Facilities - Identifies hospital facilities reported by multiple sources.
- Law Enforcement Facilities - Identifies law enforcement facilities reported by multiple sources.
- Parks and Recreational Facilities - Identifies parks and recreational facilities reported by multiple sources.
- Religious Center Facilities - Identifies religious centers including churches, temples, synagogues, mosques, chapels, centers, and other types of religious facilities reported by multiple sources.
- Private and Public Schools - Identifies private and public schools reported by multiple sources.
- Social Service Centers - Identifies social service centers reported by multiple sources.
- Veteran Organizations and Facilities

Brevard County Demographic Profile

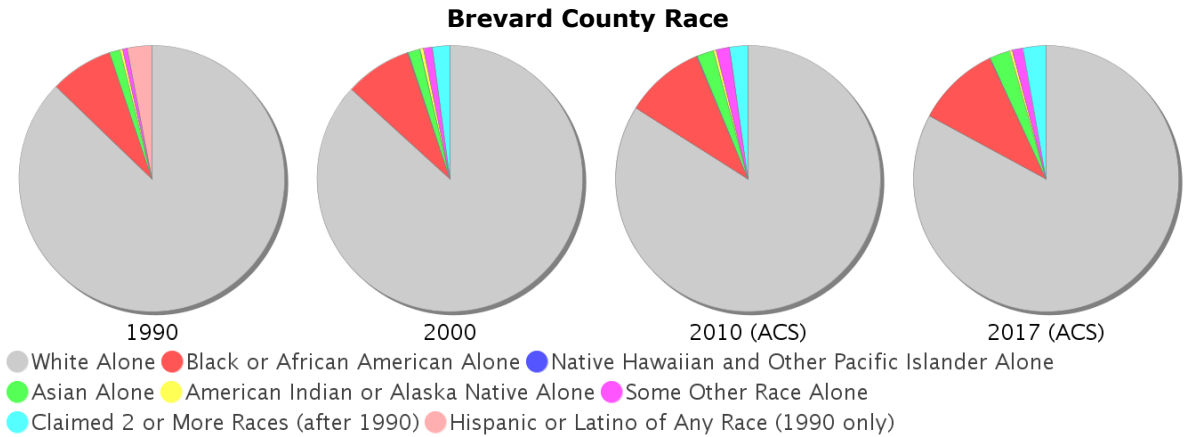
General Population Trends - Brevard

Description	1990	2000	2010 (ACS)	2017 (ACS)
Total Population	398,978	476,230	540,583	568,183
Total Households	161,365	198,195	220,871	227,223
Average Persons per Acre	0.574	0.705	0.80	0.841
Average Persons per Household	2.473	2.352	2.00	2.47
Average Persons per Family	2.93	2.904	3.025	3.157
Males	197,163	232,983	264,955	277,666
Females	201,815	243,247	275,628	290,517



Race and Ethnicity Trends - Brevard

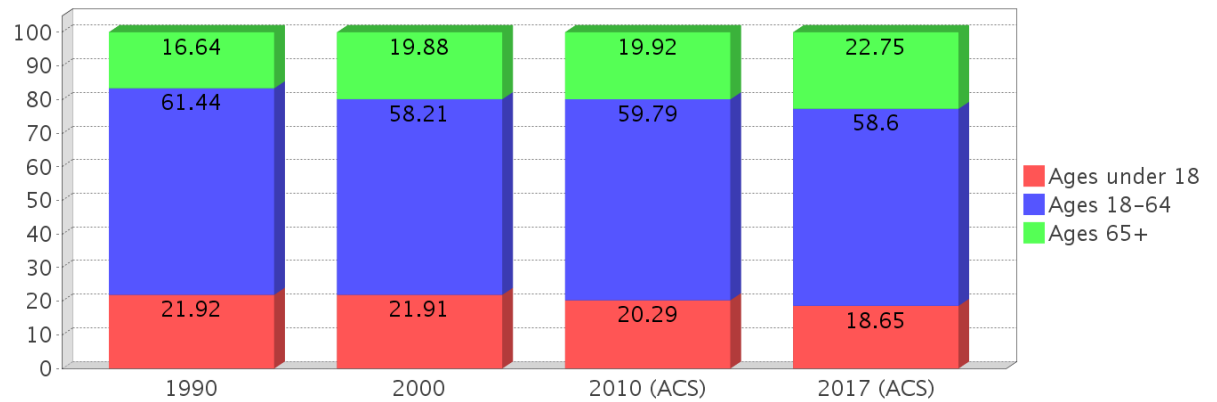
Description	1990	2000	2010 (ACS)	2017 (ACS)
White Alone	358,391 (89.83%)	413,023 (86.73%)	453,634 (83.92%)	470,794 (82.86%)
Black or African American Alone	31,417 (7.87%)	38,680 (8.12%)	52,758 (9.76%)	57,728 (10.16%)
Native Hawaiian and Other Pacific Islander Alone	(NA)	278 (0.06%)	319 (0.06%)	421 (0.07%)
Asian Alone	5,187 (1.30%)	7,122 (1.50%)	11,035 (2.04%)	13,843 (2.44%)
American Indian or Alaska Native Alone	1,369 (0.34%)	2,070 (0.43%)	1,947 (0.36%)	1,945 (0.34%)
Some Other Race Alone	2,422 (0.61%)	4,964 (1.04%)	8,928 (1.65%)	7,410 (1.30%)
Claimed 2 or More Races	(NA)	10,093 (2.12%)	11,962 (2.21%)	16,042 (2.82%)
Hispanic or Latino of Any Race	12,261 (3.07%)	21,902 (4.60%)	40,925 (7.57%)	55,042 (9.69%)
Not Hispanic or Latino	386,717 (96.93%)	454,328 (95.40%)	499,658 (92.43%)	513,141 (90.31%)
Minority	121,910 (30.56%)	77,898 (16.36%)	121,910 (22.55%)	140,474 (24.72%)



Age Trends - Brevard

Description	1990	2000	2010 (ACS)	2017 (ACS)
Under Age 5	6.61%	5.18%	4.99%	4.72%
Ages 5-17	15.31%	16.73%	15.30%	13.93%
Ages 18-21	4.92%	4.23%	4.73%	4.31%
Ages 22-29	12.48%	7.29%	8.25%	8.90%
Ages 30-39	16.19%	13.96%	10.50%	10.40%
Ages 40-49	11.81%	15.55%	15.25%	11.44%
Ages 50-64	16.04%	17.19%	21.07%	23.54%
Age 65 and Over	16.64%	19.88%	19.92%	22.75%
-Ages 65-74	10.82%	10.94%	10.41%	12.23%
-Ages 75-84	4.73%	7.04%	7.17%	7.47%
-Age 85 and Over	1.09%	1.90%	2.34%	3.04%
Median Age	NA	41	45	47

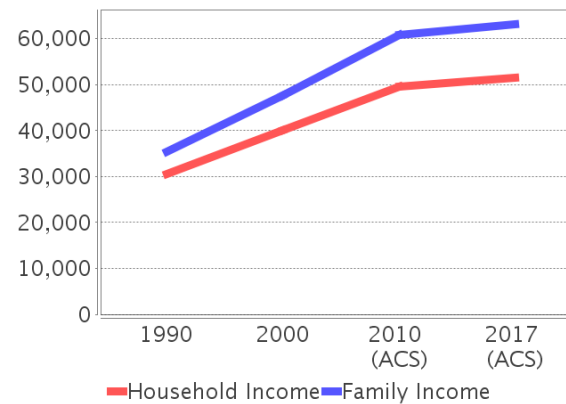
Percentage Population by Age Group - Brevard



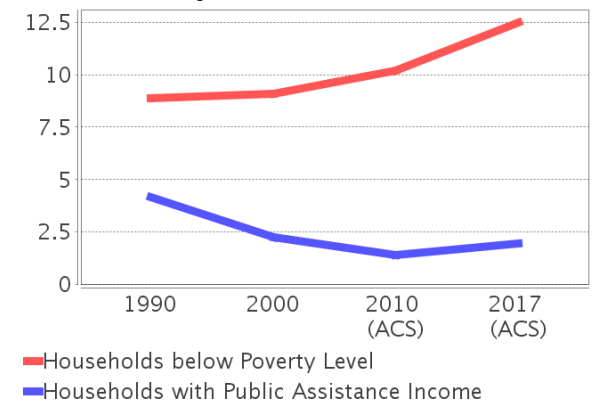
Income Trends - Brevard

Description	1990	2000	2010 (ACS)	2017 (ACS)
Median Household Income	\$30,534	\$40,099	\$49,523	\$51,536
Median Family Income	\$35,402	\$47,571	\$60,842	\$63,114
Population below Poverty Level	9.13%	9.47%	10.52%	13.37%
Households below Poverty Level	8.89%	9.11%	10.20%	12.49%
Households with Public Assistance Income	4.18%	2.26%	1.38%	1.95%

Income Trends



Poverty and Public Assistance



Disability Trends - Brevard

See the Data Sources section below for an explanation about the differences in disability data among the various years.

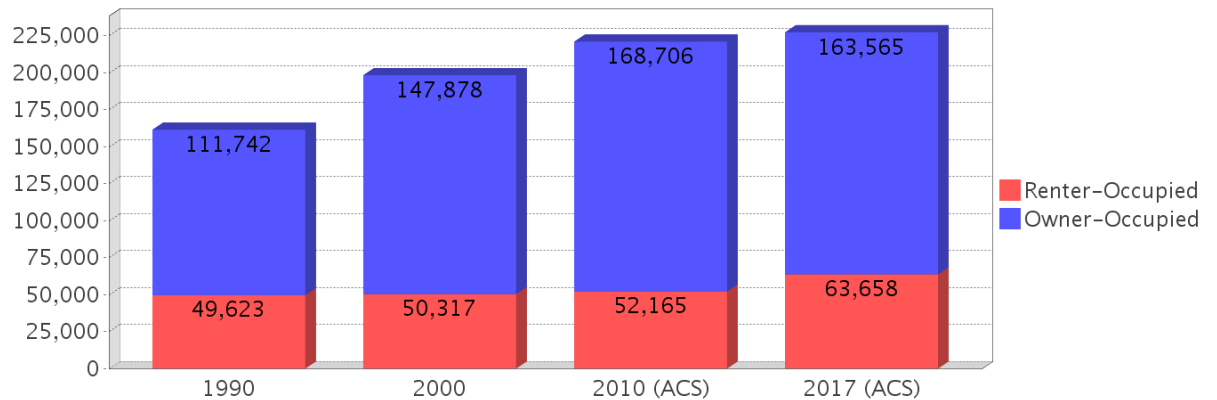
Description	1990	2000	2010 (ACS)	2017 (ACS)
Population 16 To 64 Years with a disability	21,900 (6.99%)	56,763 (12.82%)	NA (NA)	NA (NA)
Population 20 To 64 Years with a disability	NA (NA)	NA (NA)	NA (NA)	38,135 (11.95%)

Educational Attainment Trends - Brevard

Age 25 and Over

Description	1990	2000	2010 (ACS)	2017 (ACS)
Less than 9th Grade	14,336 (5.17%)	11,314 (3.33%)	9,471 (2.44%)	10,254 (2.45%)
9th to 12th Grade, No Diploma	34,651 (12.49%)	35,102 (10.33%)	27,078 (6.97%)	24,309 (5.80%)
High School Graduate or Higher	228,359 (82.34%)	293,322 (86.34%)	352,024 (90.59%)	384,345 (91.75%)
Bachelor's Degree or Higher	56,574 (20.40%)	80,020 (23.55%)	101,847 (26.21%)	118,861 (28.37%)

Housing Tenure - Brevard



Language Trends - Brevard

Age 5 and Over

Description	1990	2000	2010 (ACS)	2017 (ACS)
Speaks English Well	5,377 (1.44%)	7,463 (1.65%)	9,800 (1.91%)	10,921 (2.02%)
Speaks English Not Well	NA	3,748 (0.83%)	4,813 (0.94%)	6,157 (1.14%)
Speaks English Not at All	NA	658 (0.15%)	1,126 (0.22%)	1,449 (0.27%)
Speaks English Not Well or Not at All	3,139 (0.84%)	4,406 (0.98%)	5,939 (1.16%)	7,606 (1.40%)

Housing Trends - Brevard

Description	1990	2000	2010 (ACS)	2017 (ACS)
Total	185,150	222,072	267,036	274,602
Units per Acre	0.266	0.329	0.395	0.407
Single-Family Units	107,123	146,810	182,849	190,403
Multi-Family Units	36,002	49,971	60,169	62,666
Mobile Home Units	17,130	24,092	23,310	20,959
Owner-Occupied Units	111,742	147,878	168,706	163,565
Renter-Occupied Units	49,623	50,317	52,165	63,658
Vacant Units	23,785	23,877	46,165	47,379
Median Housing Value	\$74,600	\$87,600	\$186,900	\$162,400
Occupied Housing Units w/No Vehicle	8,788 (5.45%)	10,579 (5.34%)	9,967 (4.51%)	12,725 (5.60%)

County Data Sources

Demographic data reported is from the U.S. Decennial Census (1990, 2000) and the American Community Survey (ACS) 5-year estimates from 2006-2010 and 2013-2017. The data was gathered at the county level. Depending on the dataset, the data represents 100% counts (Census Summary File 1) or sample-based information (Census Summary File 3 or ACS).

About the Census Data:

Use caution when comparing the 100% count data (Decennial Census) to the sample-based data (ACS). In any given year, about one in 40 or 2.5% of U.S. households will receive the ACS questionnaire. Over any five-year period, about one in eight households will receive the questionnaire, as compared to about one in six that received the long form questionnaire for the Decennial Census 2000. (Source: <http://mcdc.missouri.edu/pub/data/acs/Readme.shtml>) The U.S. Census Bureau provides help with this process:

<https://www.census.gov/programs-surveys/acs/guidance/comparing-acs-data/2017.html>

Use caution when interpreting changes in Race and Ethnicity over time. Starting with the 2000 Decennial Census, respondents were given a new option of selecting one or more race categories. Also in 2000, the placement of the question about Hispanic origin changed, helping to increase responsiveness to the Hispanic-origin question. Because of these and other changes, the 1990 data on race and ethnicity are not directly comparable with data from later censuses. (Source: <http://www.census.gov/prod/2001pubs/c2kbr01-1.pdf>; <http://www.census.gov/pred/www/rpts/Race%20and%20Ethnicity%20FINAL%20report.pdf>)

The "Minority" calculations are derived from Census and ACS data using both the race and ethnicity responses. On this report, "Minority" refers to individuals who list a race other than White and/or list their ethnicity as Hispanic/Latino. In other words, people who are multi-racial, any single race other than White, or Hispanic/Latino of any race are considered minorities.

Disability data is not included in the 2010 Decennial Census, or the 2006-2010 ACS. This data is available in the 2013-2017 ACS.

Because of changes made to the Census and ACS questions between 1990 and 2017, disability variables should not be compared from year to year. For example: 1) With the 1990 data the disabilities are listed as a "work disability" while this distinction is not made with 2000 or 2017 ACS data; 2) The 2017 ACS data includes the institutionalized population (e.g. persons in prisons and group homes), while this population is not included in 1990 or 2000; 3) the age groupings changed over the years.

Please take the following two concerns into account when viewing this data: 1) With the 1990 data the disabilities are listed as a "work disability" while this distinction is not made with 2000 or 2017 ACS data; 2) The 2017 ACS data includes the institutionalized population (e.g. persons in prisons and group homes), while this population is not included in 1990 or 2000.

source:

<https://www.census.gov/people/disability/methodology/acs.html>

<https://www.census.gov/population/www/cen2000/90vs00/index.html>

The category Bachelor's Degree or Higher under the heading Educational Attainment Trends is a subset of the category High School Graduate or Higher.

Metadata

- Community and Fraternal Centers https://etdmpub.florida-estat.org/metadata/gc_communitycenter.htm
- Correctional Facilities in Florida https://etdmpub.florida-estat.org/metadata/gc_correctional.htm
- Cultural Centers in Florida https://etdmpub.florida-estat.org/metadata/gc_culturecenter.htm
- Fire Department and Rescue Station Facilities in Florida https://etdmpub.florida-estat.org/metadata/gc_firestat.htm
- Local, State, and Federal Government Buildings in Florida https://etdmpub.florida-estat.org/metadata/gc_govbuild.htm
- Florida Health Care Facilities https://etdmpub.florida-estat.org/metadata/gc_health.htm
- Hospital Facilities in Florida https://etdmpub.florida-estat.org/metadata/gc_hospitals.htm
- Law Enforcement Facilities in Florida https://etdmpub.florida-estat.org/metadata/gc_lawenforce.htm
- Florida Parks and Recreational Facilities https://etdmpub.florida-estat.org/metadata/gc_parks.htm
- Religious Centers https://etdmpub.florida-estat.org/metadata/gc_religion.htm
- Florida Public and Private Schools https://etdmpub.florida-estat.org/metadata/gc_schools.htm
- Social Service Centers https://etdmpub.florida-estat.org/metadata/gc_socialservice.htm
- Assisted Rental Housing Units in Florida https://etdmpub.florida-estat.org/metadata/gc_assisted_housing.htm
- Group Care Facilities <https://etdmpub.florida-estat.org/metadata/groupcare.htm>
- Mobile Home Parks in Florida https://etdmpub.florida-estat.org/metadata/gc_mobilehomes.htm
- Migrant Camps in Florida <https://etdmpub.florida-estat.org/metadata/migrant.htm>
- Veteran Organizations and Facilities https://etdmpub.florida-estat.org/metadata/gc_veterans.htm
- Generalized Land Use - Florida DOT District 5 https://etdmpub.florida-estat.org/metadata/d5_lu_gen.htm
- Census Block Groups in Florida https://etdmpub.florida-estat.org/metadata/e2_cenacs_cci.htm
- 1990 Census Block Groups in Florida https://etdmpub.florida-estat.org/metadata/e2_cenblkgrp_1990_cci.htm
- 2000 Census Block Groups in Florida https://etdmpub.florida-estat.org/metadata/e2_cenblkgrp_2000_cci.htm
- 2010 Census Block Groups in Florida https://etdmpub.florida-estat.org/metadata/e2_cenblkgrp_2010_cci.htm