

Sociocultural Data Report

Lake Park (Naples)

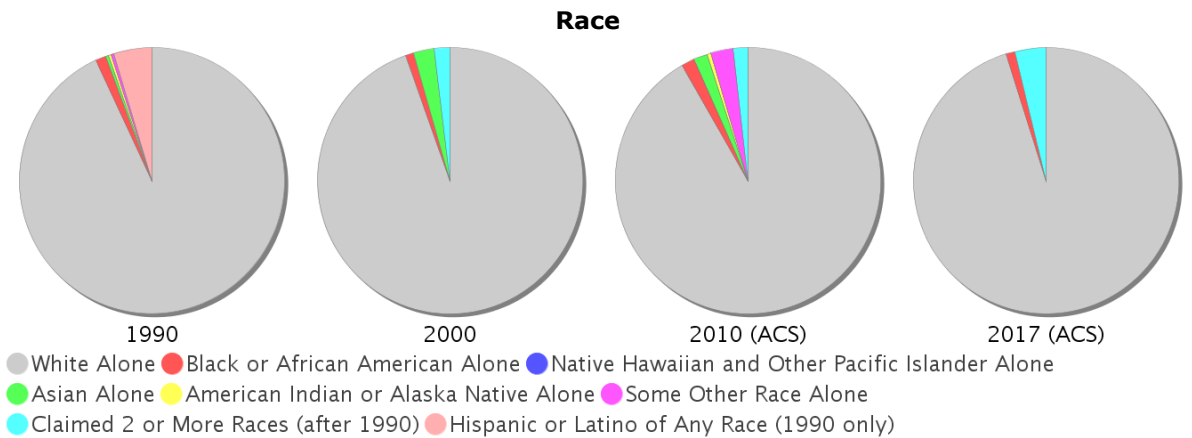
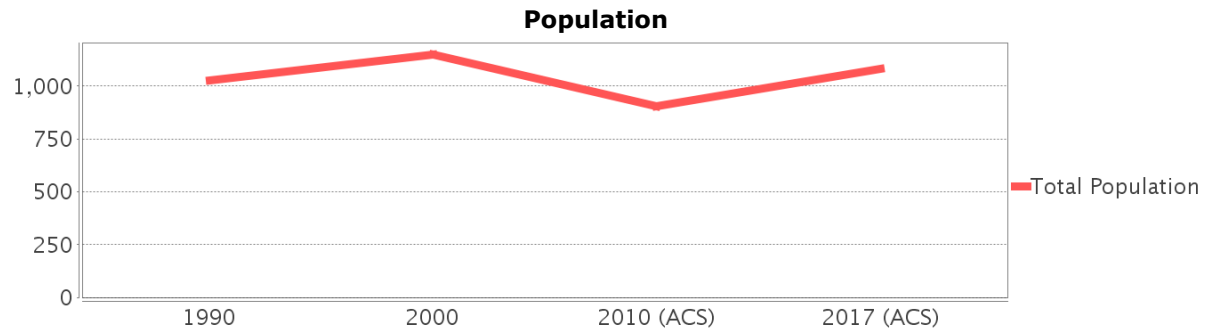
Area: 0.436 square miles
Jurisdiction(s): Cities: Naples
 Counties: Collier

General Population Trends

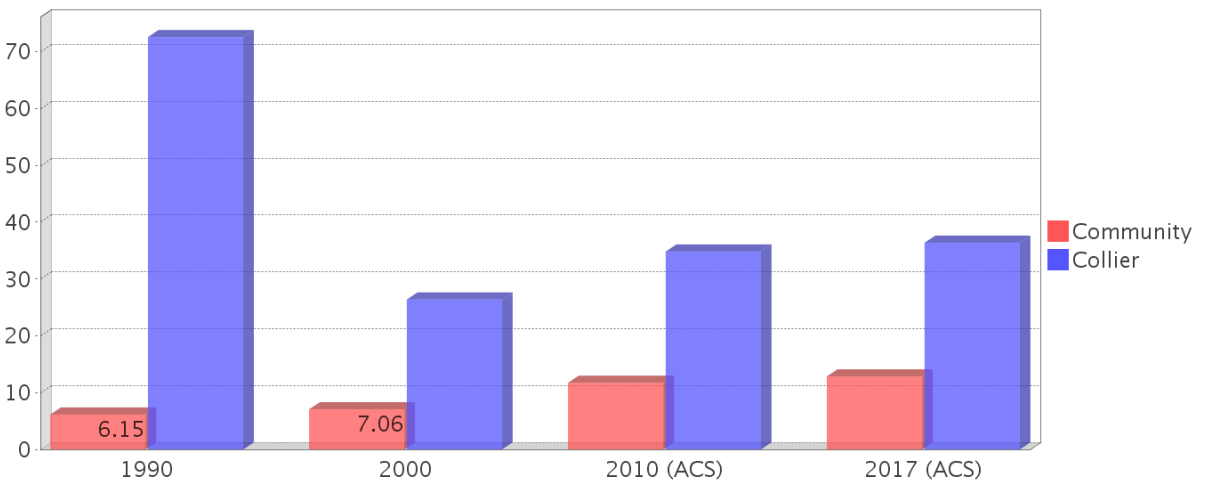
Description	1990	2000	2010 (ACS)	2017 (ACS)
Total Population	1,025	1,148	904	1,082
Total Households	426	494	393	446
Average Persons per Acre	4.24	3.80	4.09	5.20
Average Persons per Household	2.29	2.37	2.25	2.41
Average Persons per Family	2.88	2.91	2.75	3.01
Males	497	591	442	598
Females	528	557	461	484

Race and Ethnicity Trends

Description	1990	2000	2010 (ACS)	2017 (ACS)
White Alone	1,000 (97.56%)	1,086 (94.60%)	828 (91.59%)	1,029 (95.10%)
Black or African American Alone	14 (1.37%)	11 (0.96%)	15 (1.66%)	12 (1.11%)
Native Hawaiian and Other Pacific Islander Alone	0 (0.00%)	0 (0.00%)	0 (0.00%)	0 (0.00%)
Asian Alone	4 (0.39%)	29 (2.53%)	15 (1.66%)	0 (0.00%)
American Indian or Alaska Native Alone	3 (0.29%)	0 (0.00%)	4 (0.44%)	0 (0.00%)
Some Other Race Alone	4 (0.39%)	0 (0.00%)	25 (2.77%)	0 (0.00%)
Claimed 2 or More Races	NA (NA)	22 (1.92%)	16 (1.77%)	41 (3.79%)
Hispanic or Latino of Any Race	50 (4.88%)	20 (1.74%)	67 (7.41%)	93 (8.60%)
Not Hispanic or Latino	975 (95.12%)	1,128 (98.26%)	837 (92.59%)	989 (91.40%)
Minority	63 (6.15%)	81 (7.06%)	106 (11.73%)	139 (12.85%)



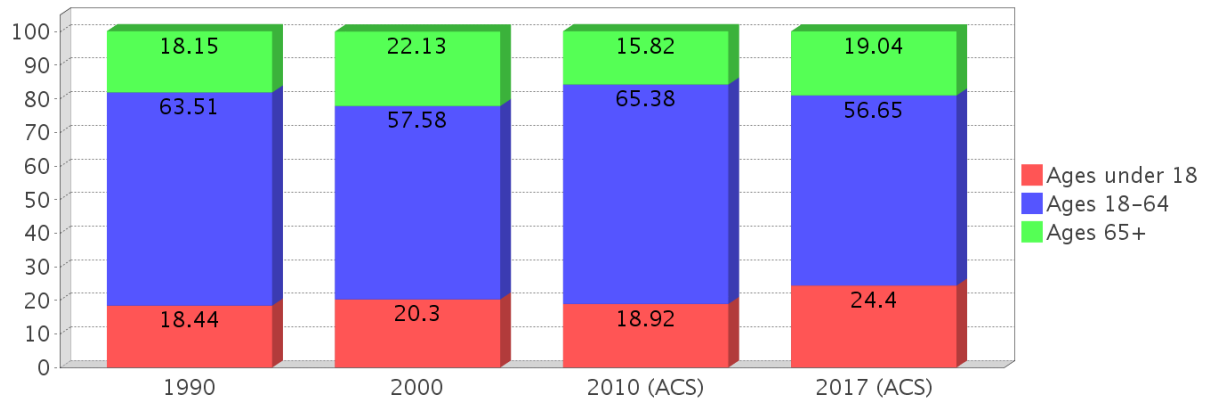
Minority Percentage Population



Age Trends

Description	1990	2000	2010 (ACS)	2017 (ACS)
Under Age 5	5.85%	6.18%	2.77%	6.56%
Ages 5-17	12.59%	14.11%	16.15%	17.84%
Ages 18-21	4.10%	2.44%	4.20%	0.09%
Ages 22-29	11.80%	6.27%	5.64%	10.26%
Ages 30-39	19.61%	16.55%	10.18%	9.89%
Ages 40-49	11.22%	16.72%	16.04%	12.20%
Ages 50-64	16.78%	15.59%	29.31%	24.21%
Age 65 and Over	18.15%	22.13%	15.82%	19.04%
-Ages 65-74	11.32%	7.67%	7.19%	11.28%
-Ages 75-84	5.76%	9.49%	5.75%	4.81%
-Age 85 and Over	1.07%	4.97%	2.88%	2.96%
Median Age	NA	48	50	51

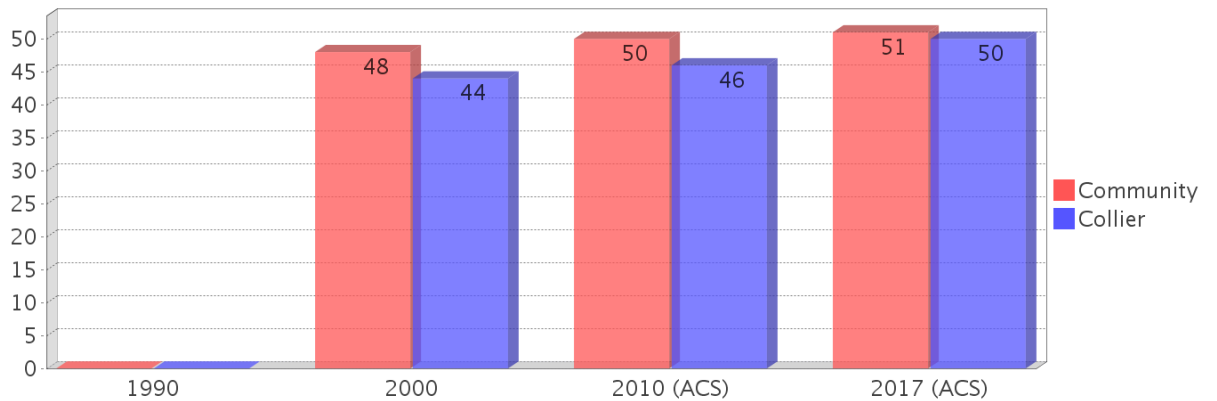
Population by Age Group



Income Trends

Description	1990	2000	2010 (ACS)	2017 (ACS)
Median Household Income	\$36,359	\$52,639	\$40,394	\$54,816
Median Family Income	\$41,602	\$65,043	\$82,259	\$110,038
Population below Poverty Level	6.44%	3.57%	22.90%	7.30%
Households below Poverty Level	7.28%	1.82%	21.12%	8.74%
Households with Public Assistance Income	0.00%	0.00%	0.00%	1.12%

Median Age Comparison

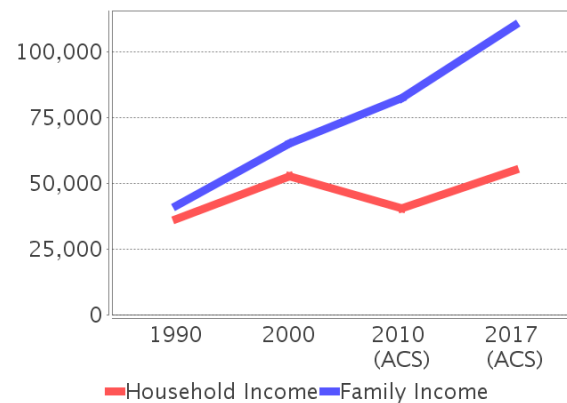


Disability Trends

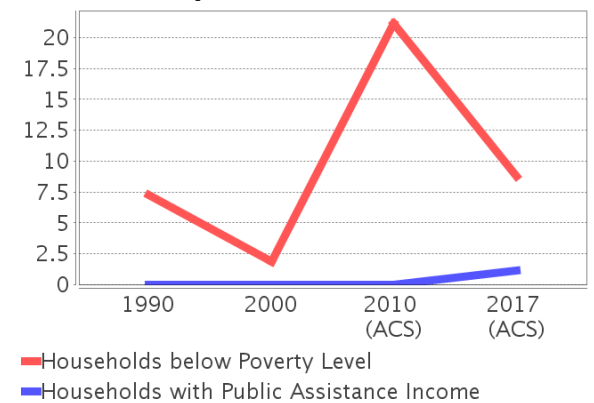
See the Data Sources section below for an explanation about the differences in disability data among the various years.

Description	1990	2000	2010 (ACS)	2017 (ACS)
Population 16 To 64 Years with a disability	94 (10.20%)	75 (7.30%)	(NA)	(NA)
Population 20 To 64 Years with a disability	(NA)	(NA)	(NA)	27 (4.41%)

Income Trends



Poverty and Public Assistance



Educational Attainment Trends

Age 25 and Over

Description	1990	2000	2010 (ACS)	2017 (ACS)
Less than 9th Grade	80 (9.79%)	49 (5.67%)	29 (3.83%)	8 (0.99%)
9th to 12th Grade, No Diploma	108 (13.22%)	84 (9.72%)	16 (2.11%)	36 (4.44%)
High School Graduate or Higher	630 (77.11%)	731 (84.61%)	713 (94.19%)	765 (94.44%)
Bachelor's Degree or Higher	203 (24.85%)	193 (22.34%)	258 (34.08%)	367 (45.31%)

Language Trends

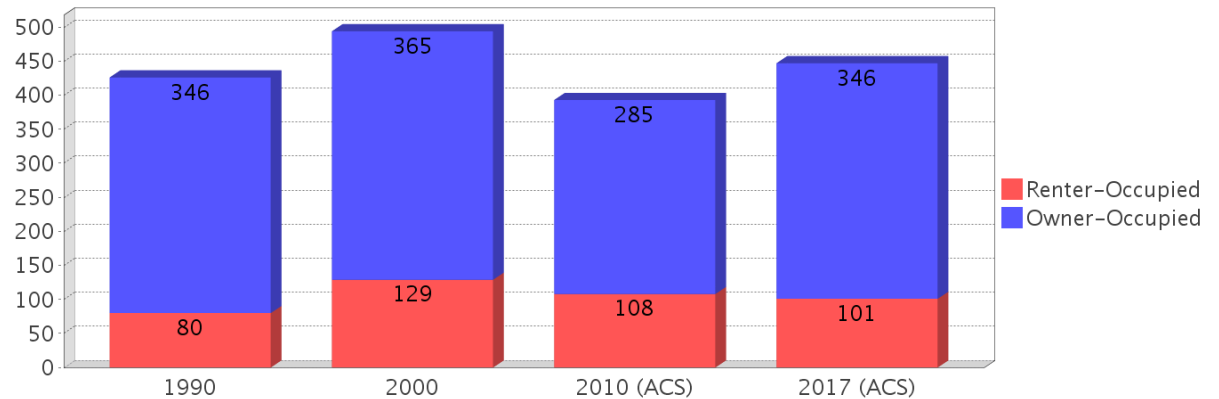
Age 5 and Over

Description	1990	2000	2010 (ACS)	2017 (ACS)
Speaks English Well	4 (0.39%)	20 (1.86%)	12 (1.21%)	17 (1.68%)
Speaks English Not Well	NA (NA)	21 (1.95%)	25 (2.52%)	2 (0.20%)
Speaks English Not at All	NA (NA)	0 (0.00%)	0 (0.00%)	0 (0.00%)
Speaks English Not Well or Not at All	13 (1.28%)	21 (1.95%)	25 (2.52%)	2 (0.20%)

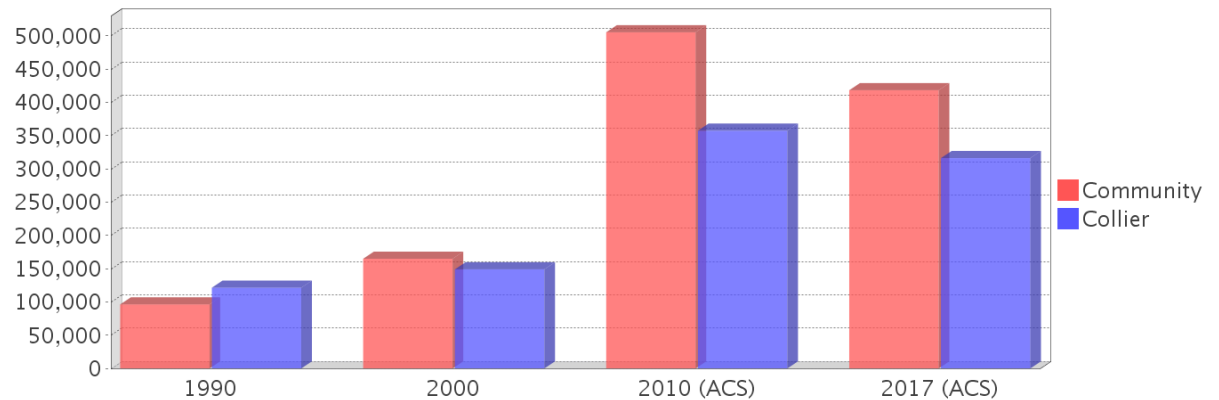
Housing Trends

Description	1990	2000	2010 (ACS)	2017 (ACS)
Total	461	520	477	584
Units per Acre	1.85	2.11	2.45	2.99
Single-Family Units	398	460	436	521
Multi-Family Units	25	60	128	57
Mobile Home Units	1	0	0	5
Owner-Occupied Units	346	365	285	346
Renter-Occupied Units	80	129	108	101
Vacant Units	35	26	84	137
Median Housing Value	\$96,300	\$164,850	\$505,350	\$418,300
Occupied Housing Units w/No Vehicle	31 (7.28%)	23 (4.66%)	1 (0.25%)	28 (6.26%)

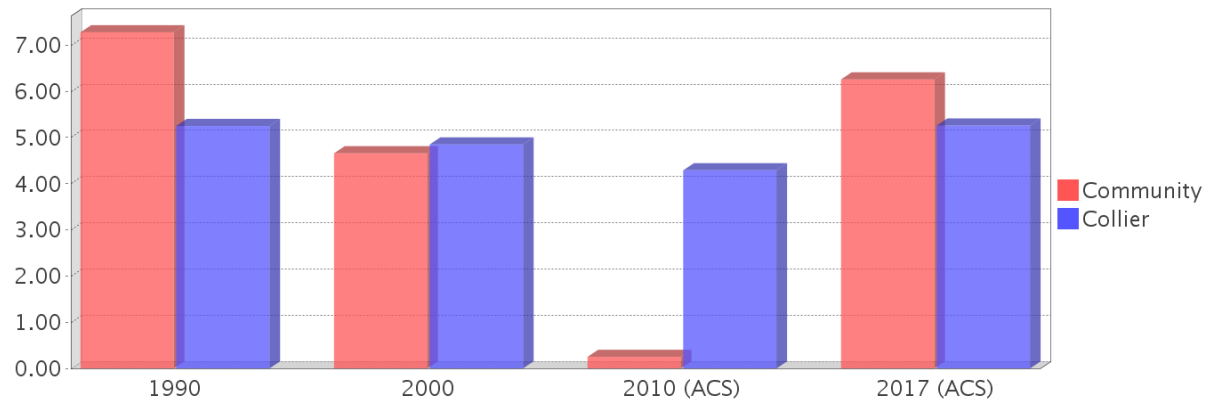
Housing Tenure



Median Housing Value Comparison

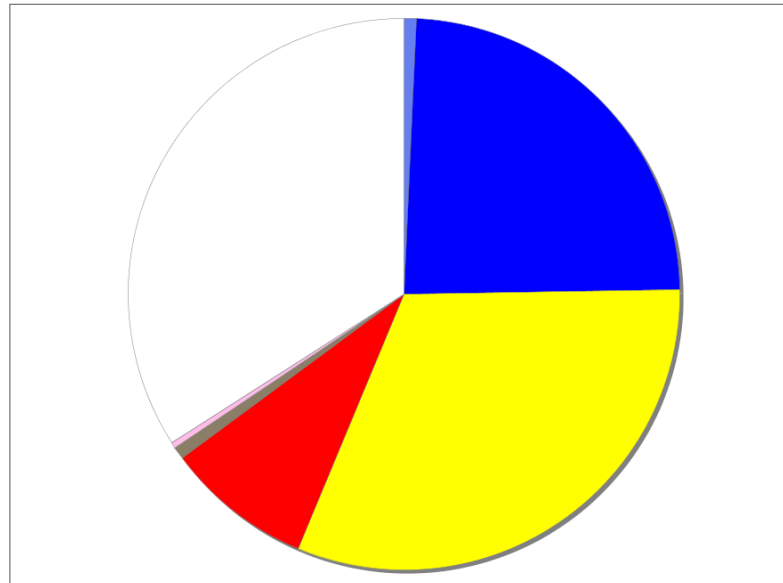


Occupied Units With No Vehicles Available



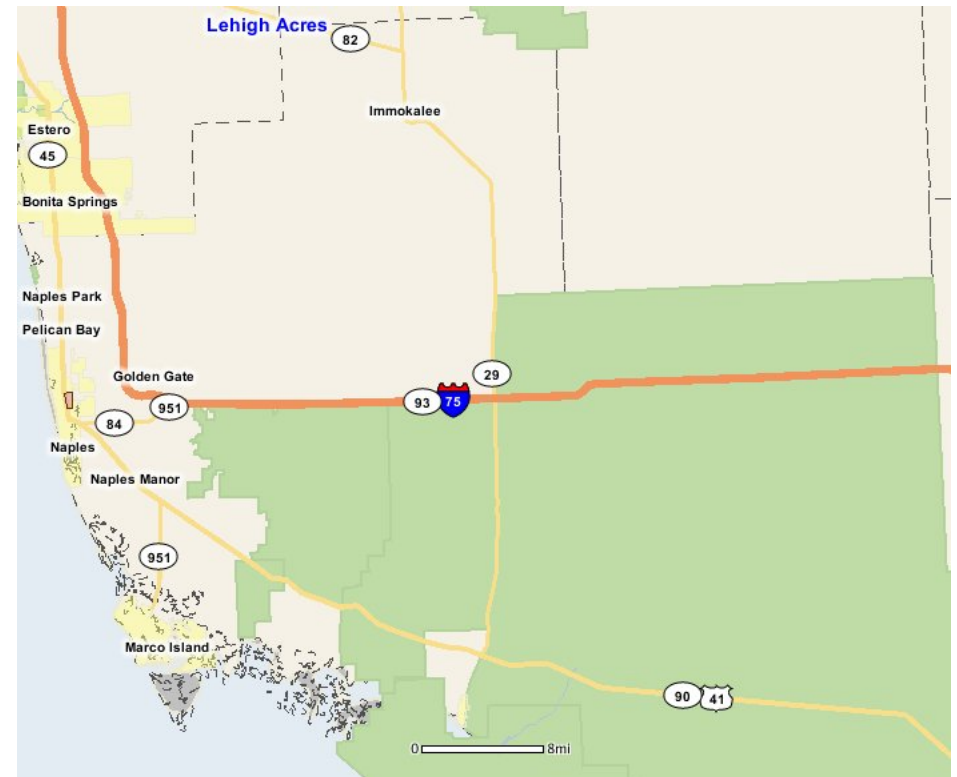
Existing Land Use

Land Use Type	Acres	Percentage
Acreage Not Zoned For Agriculture	0	0.00%
Agricultural	0	0.00%
Centrally Assessed	0	0.00%
Industrial	0	0.00%
Institutional	2	0.72%
Mining	0	0.00%
Other	0	0.00%
Public/Semi-Public	67	23.99%
Recreation	0	0.00%
Residential	88	31.51%
Retail/Office	24	8.59%
Row	0	0.00%
Vacant Residential	2	0.72%
Vacant Nonresidential	1	0.36%
Water	0	0.00%
Parcels With No Values	95	34.02%



- Acreage Not Zoned For Agriculture
- Agricultural
- Centrally Assessed
- Industrial
- Institutional
- Mining
- Other
- Public/Semi-Public
- Recreation
- Residential
- Retail/Office
- Row
- Vacant Residential
- Vacant Nonresidential
- Water
- Parcels With No Values

Location Maps



Community Facilities

The community facilities information below is useful in a variety of ways for environmental evaluations. These community resources should be evaluated for potential sociocultural effects, such as accessibility and relocation potential. The facility types may indicate the types of population groups present in the project study area. Facility staff and leaders can be sources of community information such as who uses the facility and how it is used. Additionally, community facilities are potential public meeting venues.

Community Boundaries (User defined)

Facility Name

Coquina Sands (Naples)

Coquina Sands

Lake Park (Naples)

Old Naples (Naples)

Lake Park

Sun Terrace (Naples)

Old Naples

Redevelopment Area (Naples)

Airport Industrial Area

Community Centers (Points)

Facility Name

Address

Zip Code

FLEISCHMANN PARK COMMUNITY CENTER

1600 FLEISCHMANN BLVD

34102

Florida Parks and Recreational Facilities (Points)

Facility Name

Address

Zip Code

THE NAPLES PRESEERVE PARK

1690 9TH ST N

34102

GOODLETTE LINEAR PARK

CR 851

34102

BETSY JONES PARK

10TH ST N & 6TH AVE N

34102

FLEISCHMANN PARK

1200 FLEISCHMANN BLVD

34102

Healthcare Facilities (Geocoded)

Facility Name

Address

Zip Code

REGALA PHILLIP M.D.

1350 TAMIAMI TRAIL 203

34102

ZAMPOGNA, A. G. MD PA

1350 TAMIAMI TRAIL N 205

34102

PAONE DOUGLAS B. M.D. PA

671 GOODLETTE ROAD N, SUITE 240

34102

FRANCU INTERNAL MEDICINE SPECIALISTS PA

671 GOODLETTE ROAD N, SUITE 160

34102

EDWIN J DEAN MD LLC

501 GOODLETTE ROAD N, UNIT D306

34102

WE CARE HEALTHCARE INC.

1000 TAMIAMI TRAIL N 203

34102

SOLNES A.TOBAL, MD, PA

501 GOODLETTE ROAD N A-106

34102

DE LEON CESAR M.D. NAPLES MED CTR.

501 GOODLETTE ROAD N 100

34102

KRAVIS, RICHARD

606 9TH STREET N, SUITE 100

34102

HAVIG MICHAEL T. M.D.

1350 TAMIAMI TRAIL N 202

34102

SPECIALISTS IN UROLOGY

990 TAMIAMI TRAIL N 100

34102

ADVANCED GYNECOLOGY, INC

671 GOODLETTE ROAD N, SUITE 230

34102

NAPLES INJURY TREATMENT CENTER

671 GOODLETTE ROAD, SUITE 150

34102

NCHMD INC.

1008 GOODLETTE ROAD N, SUITE 100

34102

D'AGOSTINO, ANTHONY, M.D.

1350 9TH STREET N 201

34102

BRIAN WOLFF, M.D.

671 GOODLETTE ROAD 120

34102

ADVANCED DERMATOLOGY & SKIN SURG SPEC

1000 GOODLETTE ROAD 100

34102

MILLENNIUM PHYSICIAN GROUP, LLC

681 GOODLETTE FRANK ROAD, UNIT 101

34102

GATES HERBERT S. III M.D.

681 GOODLETTE ROAD N 220

34102

CORDERO PEDIATRIC OFFICE, INC

1090 6TH AVENUE N

34102

21ST CENTURY ONCOLOGY, LLC DBA SPECIALISTS IN UROL

990 TAMIAMI TRAIL N, UNIT 200

34102

SPECIALISTS OF UROLOGY

955 10 AVENUE N, SUITE A

34102

NAPLES EYE PHYSICIANS

661 GOODLETTE ROAD N 105

34102

Public and Private Schools (Points)

Facility Name	Address	Zip Code
LAKE PARK ELEMENTARY SCHOOL	1295 14TH AVENUE N	34102

Religious Centers (Points)

Facility Name	Address	Zip Code
NAPLES CHURCH OF GOD	1074 10TH STREET NORTH	34102
NEW MISSIONARY BAPTIST CHURCH	1070 6TH AVENUE NORTH	34102

Social Services (Geocoded)

Facility Name	Address	Zip Code
HEART OF ADOPTIONS	1000 TAMIAMI TRAIL NORTH	34102

US Census Places

Facility Name
Naples

Block Groups

The following Census Block Groups were used to calculate demographics for this report.

1990 Census Block Groups

120210007001, 120210002001, 120210001001, 120210002002, 120210003025, 120210102037

2000 Census Block Groups

120210003025, 120210102031, 120210002002, 120210007001

2010 Census Block Groups

120210102102, 120210007001, 120210003021, 120210002002

2017 Census Block Groups

120210102102, 120210002002, 120210007001, 120210003021

Data Sources

Area

The geographic area of the community based on a user-specified community boundary or area of interest (AOI) boundary.

Jurisdiction

Jurisdiction(s) includes local government boundaries that intersect the community or AOI boundary.

Demographic Data

Demographic data reported under the headings General Population Trends, Race and Ethnicity Trends, Age Trends, Income Trends, Educational Attainment Trends, Language Trends, and Housing Trends is from the U.S. Decennial Census (1990, 2000) and the American Community Survey (ACS) 5-year estimates from 2006-2010 and 2013-2017. The data was gathered at the block group level for user-specified community boundaries and AOIs, and at the county level for counties. Depending on the dataset, the data represents 100% counts (Census Summary File 1) or sample-based information (Census Summary File 3 or ACS).

About the Census Data:

User-specified community boundaries and AOIs do not always correspond precisely to block group boundaries. In these instances, adjustment of the geographic area and data for affected block groups is required to estimate the actual population. To improve the accuracy of such estimates in the SDR report, the census block group data was adjusted to exclude all census blocks with a population of two or fewer. These areas were eliminated from the corresponding years' block groups. Next, the portion of the block group that lies outside of the community or AOI boundary was removed. The demographics within each block group were then recalculated, assuming an equal area distribution of the population. Note that there may be areas where there is no population.

Use caution when comparing the 100% count data (Decennial Census) to the sample-based data (ACS). In any given year, about one in 40 or 2.5% of U.S. households will receive the ACS questionnaire. Over any five-year period, about one in eight households will receive the questionnaire, as compared to about one in six that received the long form questionnaire for the Decennial Census 2000. (Source: <http://mcdc.missouri.edu/pub/data/acs/Readme.shtml>) The U.S. Census Bureau provides help with this process:

<https://www.census.gov/programs-surveys/acs/guidance/comparing-acs-data/2017.html>

Use caution when interpreting changes in Race and Ethnicity over time. Starting with the 2000 Decennial Census, respondents were given a new option of selecting one or more race categories. Also in 2000, the placement of the question about Hispanic origin changed, helping to increase responsiveness to the Hispanic-origin question. Because of these and other changes, the 1990 data on race and ethnicity are not directly comparable with data from later censuses. (Source: <http://www.census.gov/prod/2001pubs/c2kbr01-1.pdf>; <http://www.census.gov/pred/www/rpts/Race%20and%20Ethnicity%20FINAL%20report.pdf>)

The "Minority" calculations are derived from Census and ACS data using both the race and ethnicity responses. On this report, "Minority" refers to individuals who list a race other than White and/or list their ethnicity as Hispanic/Latino. In other words, people who are multi-racial, any single race other than White, or Hispanic/Latino of any race are considered minorities.

Disability data is not included in the 2010 Decennial Census, or the 2006-2010 ACS. This data is available in the 2013-2017 ACS.

Because of changes made to the Census and ACS questions between 1990 and 2017, disability variables should not be compared from year to year. For example: 1) With the 1990 data the disabilities are listed as a "work disability" while this distinction is not made with 2000 or 2017 ACS data; 2) The 2017 ACS data includes the institutionalized population (e.g. persons in prisons and group homes), while this population is not included in 1990 or 2000; 3) the age groupings changed over the years.

Please take the following two concerns into account when viewing this data: 1) With the 1990 data the disabilities are listed as a "work disability" while this distinction is not made with 2000 or 2017 ACS data; 2) The 2017 ACS data includes the institutionalized population (e.g. persons in prisons and group homes), while this population is not included in 1990 or 2000.

The category Bachelor's Degree or Higher under the heading Educational Attainment Trends is a subset of the category High School Graduate or Higher.

Income of households. This includes the income of the householder and all other individuals 15 years old and over in the household, whether they are related to the householder or not. Because many households consist of only one person, average household income is usually less than average family income.

Income of families. In compiling statistics on family income, the incomes of all members 15 years old and over related to the householder are summed and treated as a single amount.

Age Trends median age for 1990 is not available.

Land Use Data

The Land Use information Indicates acreages and percentages for the generalized land use types used to group parcel-specific, existing land use assigned by the county property appraiser office according to the Florida Department of Revenue land use codes.

Community Facilities Data

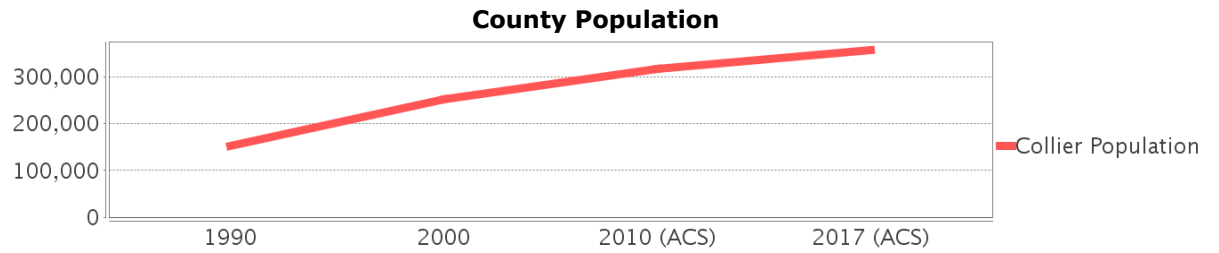
- Assisted Rental Housing Units - Identifies multifamily rental developments that receive funding assistance under federal, state, and local government programs to offer affordable housing as reported by the Shimberg Center for Housing Studies, University of Florida.
- Mobile Home Parks - Identifies approved or acknowledged mobile home parks reported by the Florida Department of Business and Professional Regulation and Florida Department of Health.
- Migrant Camps - Identifies migrant labor camp facilities inspected by the Florida Department of Health.
- Group Care Facilities - Identifies group care facilities inspected by the Florida Department of Health.
- Community Center and Fraternal Association Facilities - Identifies facilities reported by multiple sources.
- Law Enforcement Correctional Facilities - Identifies facilities reported by multiple sources.

- Cultural Centers - Identifies cultural centers including organizations, buildings, or complexes that promote culture and arts (e.g., aquariums and zoological facilities; arboreta and botanical gardens; dinner theaters; drive-ins; historical places and services; libraries; motion picture theaters; museums and art galleries; performing arts centers; performing arts theaters; planetariums; studios and art galleries; and theater producers stage facilities) reported by multiple sources.
- Fire Department and Rescue Station Facilities - Identifies facilities reported by multiple sources.
- Government Buildings - Identifies local, state, and federal government buildings reported by multiple sources.
- Health Care Facilities - Identifies health care facilities including abortion clinics, dialysis clinics, medical doctors, nursing homes, osteopaths, state laboratories/clinics, and surgicenters/walk-in clinics reported by the Florida Department of Health.
- Hospital Facilities - Identifies hospital facilities reported by multiple sources.
- Law Enforcement Facilities - Identifies law enforcement facilities reported by multiple sources.
- Parks and Recreational Facilities - Identifies parks and recreational facilities reported by multiple sources.
- Religious Center Facilities - Identifies religious centers including churches, temples, synagogues, mosques, chapels, centers, and other types of religious facilities reported by multiple sources.
- Private and Public Schools - Identifies private and public schools reported by multiple sources.
- Social Service Centers - Identifies social service centers reported by multiple sources.
- Veteran Organizations and Facilities

Collier County Demographic Profile

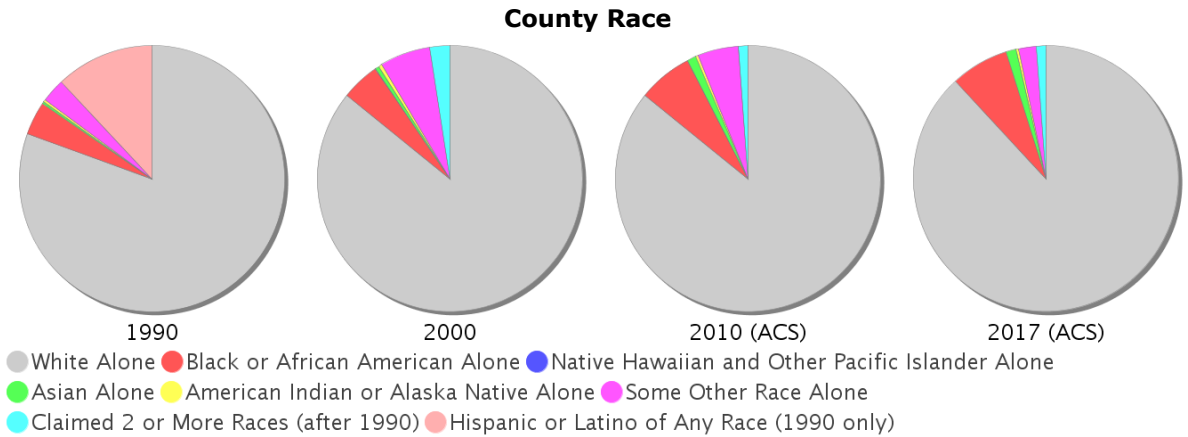
General Population Trends - Collier

Description	1990	2000	2010 (ACS)	2017 (ACS)
Total Population	152,099	251,377	316,931	356,774
Total Households	61,703	102,973	119,517	138,131
Average Persons per Acre	0.116	0.192	0.243	0.273
Average Persons per Household	2.465	2.391	3.00	2.55
Average Persons per Family	2.864	2.886	3.252	3.159
Males	75,386	125,618	157,541	175,608
Females	76,713	125,759	159,390	181,166



Race and Ethnicity Trends - Collier

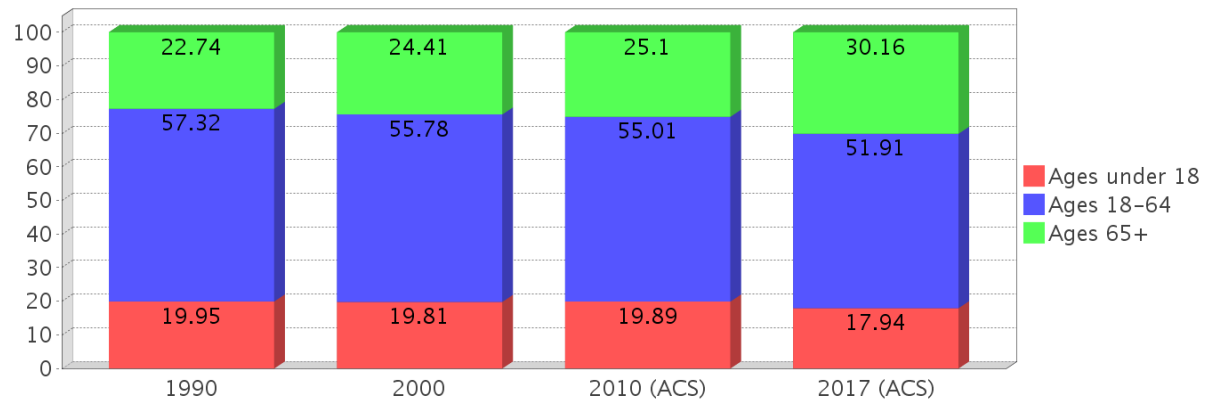
Description	1990	2000	2010 (ACS)	2017 (ACS)
White Alone	139,073 (91.44%)	215,705 (85.81%)	271,973 (85.81%)	314,272 (88.09%)
Black or African American Alone	6,986 (4.59%)	11,673 (4.64%)	21,020 (6.63%)	25,115 (7.04%)
Native Hawaiian and Other Pacific Islander Alone	(NA)	197 (0.08%)	71 (0.02%)	0 (0.00%)
Asian Alone	533 (0.35%)	1,200 (0.48%)	3,441 (1.09%)	4,552 (1.28%)
American Indian or Alaska Native Alone	428 (0.28%)	1,067 (0.42%)	881 (0.28%)	1,066 (0.30%)
Some Other Race Alone	5,028 (3.31%)	15,404 (6.13%)	15,979 (5.04%)	7,550 (2.12%)
Claimed 2 or More Races	(NA)	6,131 (2.44%)	3,566 (1.13%)	4,219 (1.18%)
Hispanic or Latino of Any Race	20,734 (13.63%)	49,252 (19.59%)	79,741 (25.16%)	96,948 (27.17%)
Not Hispanic or Latino	131,365 (86.37%)	202,125 (80.41%)	237,190 (74.84%)	259,826 (72.83%)
Minority	110,364 (72.56%)	66,314 (26.38%)	110,364 (34.82%)	129,772 (36.37%)



Age Trends - Collier

Description	1990	2000	2010 (ACS)	2017 (ACS)
Under Age 5	6.04%	5.29%	5.58%	4.67%
Ages 5-17	13.91%	14.52%	14.32%	13.26%
Ages 18-21	4.24%	3.76%	4.20%	3.81%
Ages 22-29	10.83%	7.96%	7.89%	7.90%
Ages 30-39	14.16%	13.01%	10.77%	9.93%
Ages 40-49	11.32%	12.41%	12.60%	10.76%
Ages 50-64	16.76%	18.64%	19.55%	19.50%
Age 65 and Over	22.74%	24.41%	25.10%	30.16%
-Ages 65-74	14.36%	13.95%	13.62%	15.63%
-Ages 75-84	6.95%	8.29%	8.66%	10.77%
-Age 85 and Over	1.43%	2.17%	2.82%	3.76%
Median Age	NA	44	46	50

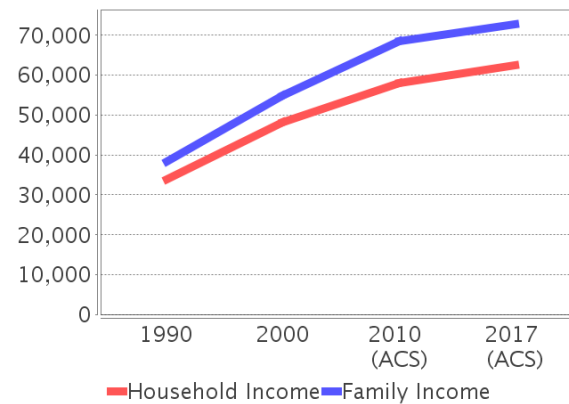
Percentage Population by Age Group



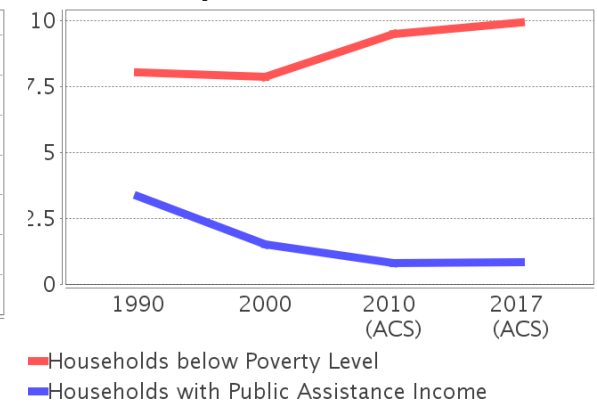
Income Trends - Collier

Description	1990	2000	2010 (ACS)	2017 (ACS)
Median Household Income	\$34,001	\$48,289	\$58,106	\$62,407
Median Family Income	\$38,428	\$54,816	\$68,556	\$72,804
Population below Poverty Level	10.51%	10.26%	12.15%	12.85%
Households below Poverty Level	8.04%	7.86%	9.48%	9.93%
Households with Public Assistance Income	3.35%	1.51%	0.81%	0.84%

Income Trends



Poverty and Public Assistance



Disability Trends - Collier

See the Data Sources section below for an explanation about the differences in disability data among the various years.

Description	1990	2000	2010 (ACS)	2017 (ACS)
Population 16 To 64 Years with a disability	6,274 (5.10%)	31,084 (13.18%)	NA (NA)	NA (NA)
Population 20 To 64 Years with a disability	NA (NA)	NA (NA)	NA (NA)	12,200 (6.90%)

Educational Attainment Trends - Collier

Age 25 and Over

Description	1990	2000	2010 (ACS)	2017 (ACS)
Less than 9th Grade	9,227	14,918	16,714	19,628
9th to 12th Grade, No Diploma	13,902	18,904	18,556	16,571
High School Graduate or Higher	87,179	151,535	196,770	232,115
Bachelor's Degree or Higher	24,637	51,757	71,508	93,730

Language Trends - Collier

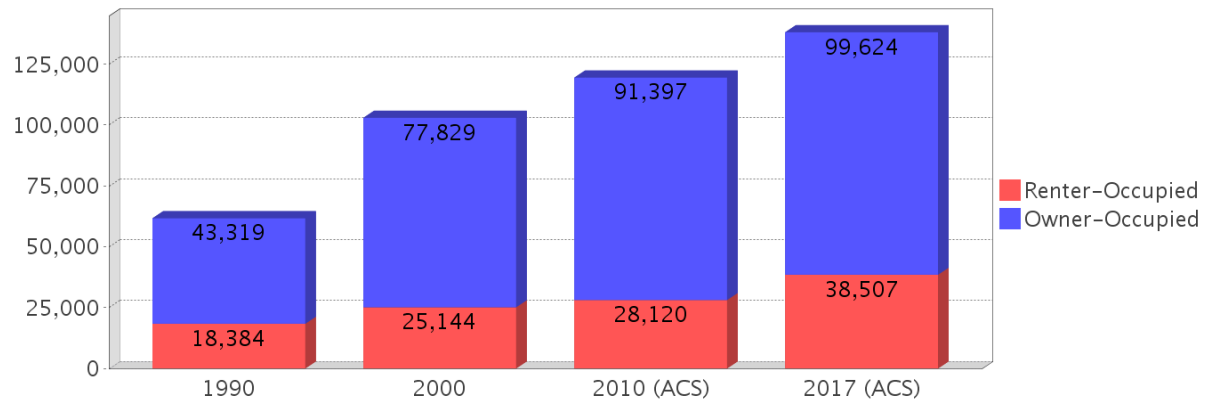
Age 5 and Over

Description	1990	2000	2010 (ACS)	2017 (ACS)
Speaks English Well	5,682	12,761	18,418	16,103
Speaks English Not Well	NA	12,354	20,900	20,927
Speaks English Not at All	NA	7,642	9,711	11,871
Speaks English Not Well or Not at All	6,005	19,996	30,611	32,798

Housing Trends - Collier

Description	1990	2000	2010 (ACS)	2017 (ACS)
Total	94,165	144,536	194,529	207,403
Units per Acre	0.072	0.111	0.149	0.159
Single-Family Units	32,425	65,362	89,652	95,685
Multi-Family Units	22,071	67,282	93,430	101,353
Mobile Home Units	6,819	10,772	11,153	10,217
Owner-Occupied Units	43,319	77,829	91,397	99,624
Renter-Occupied Units	18,384	25,144	28,120	38,507
Vacant Units	32,462	41,563	75,012	69,272
Median Housing Value	\$121,400	\$149,000	\$357,400	\$316,200
Occupied Housing Units w/No Vehicle	3,238 (5.25%)	4,999 (4.85%)	5,123 (4.29%)	7,269 (5.26%)

Housing Tenure



County Data Sources

Demographic data reported is from the U.S. Decennial Census (1990, 2000) and the American Community Survey (ACS) 5-year estimates from 2006-2010 and 2013-2017. The data was gathered at the county level. Depending on the dataset, the data represents 100% counts (Census Summary File 1) or sample-based information (Census Summary File 3 or ACS).

About the Census Data:

Use caution when comparing the 100% count data (Decennial Census) to the sample-based data (ACS). In any given year, about one in 40 or 2.5% of U.S. households will receive the ACS questionnaire. Over any five-year period, about one in eight households will receive the questionnaire, as compared to about one in six that received the long form questionnaire for the Decennial Census 2000. (Source: <http://mcdc.missouri.edu/pub/data/acs/Readme.shtml>) The U.S. Census Bureau provides help with this process:

<https://www.census.gov/programs-surveys/acs/guidance/comparing-acs-data/2017.html>

Use caution when interpreting changes in Race and Ethnicity over time. Starting with the 2000 Decennial Census, respondents were given a new option of selecting one or more race categories. Also in 2000, the placement of the question about Hispanic origin changed, helping to increase responsiveness to the Hispanic-origin question. Because of these and other changes, the 1990 data on race and ethnicity are not directly comparable with data from later censuses. (Source: <http://www.census.gov/prod/2001pubs/c2kbr01-1.pdf>; <http://www.census.gov/pred/www/rpts/Race%20and%20Ethnicity%20FINAL%20report.pdf>)

The "Minority" calculations are derived from Census and ACS data using both the race and ethnicity responses. On this report, "Minority" refers to individuals who list a race other than White and/or list their ethnicity as Hispanic/Latino. In other words, people who are multi-racial, any single race other than White, or Hispanic/Latino of any race are considered minorities.

Disability data is not included in the 2010 Decennial Census, or the 2006-2010 ACS. This data is available in the 2013-2017 ACS.

Because of changes made to the Census and ACS questions between 1990 and 2017, disability variables should not be compared from year to year. For example: 1) With the 1990 data the disabilities are listed as a "work disability" while this distinction is not made with 2000 or 2017 ACS data; 2) The 2017 ACS data includes the institutionalized population (e.g. persons in prisons and group homes), while this population is not included in 1990 or 2000; 3) the age groupings changed over the years.

Please take the following two concerns into account when viewing this data: 1) With the 1990 data the disabilities are listed as a "work disability" while this distinction is not made with 2000 or 2017 ACS data; 2) The 2017 ACS data includes the institutionalized population (e.g. persons in prisons and group homes), while this population is not included in 1990 or 2000.

source:

<https://www.census.gov/people/disability/methodology/acs.html>

<https://www.census.gov/population/www/cen2000/90vs00/index.html>

The category Bachelor's Degree or Higher under the heading Educational Attainment Trends is a subset of the category High School Graduate or Higher.

Metadata

- Community and Fraternal Centers https://etdmpub.florida-etat.org/metadata/gc_communitycenter.htm
- Correctional Facilities in Florida https://etdmpub.florida-etat.org/metadata/gc_correctional.htm
- Cultural Centers in Florida https://etdmpub.florida-etat.org/metadata/gc_culturecenter.htm
- Fire Department and Rescue Station Facilities in Florida https://etdmpub.florida-etat.org/metadata/gc_firestat.htm
- Local, State, and Federal Government Buildings in Florida https://etdmpub.florida-etat.org/metadata/gc_govbuild.htm
- Florida Health Care Facilities https://etdmpub.florida-etat.org/metadata/gc_health.htm
- Hospital Facilities in Florida https://etdmpub.florida-etat.org/metadata/gc_hospitals.htm
- Law Enforcement Facilities in Florida https://etdmpub.florida-etat.org/metadata/gc_lawenforce.htm
- Florida Parks and Recreational Facilities https://etdmpub.florida-etat.org/metadata/gc_parks.htm
- Religious Centers https://etdmpub.florida-etat.org/metadata/gc_religion.htm
- Florida Public and Private Schools https://etdmpub.florida-etat.org/metadata/gc_schools.htm
- Social Service Centers https://etdmpub.florida-etat.org/metadata/gc_socialservice.htm
- Assisted Rental Housing Units in Florida https://etdmpub.florida-etat.org/metadata/gc_assisted_housing.htm
- Group Care Facilities <https://etdmpub.florida-etat.org/metadata/groupcare.htm>
- Mobile Home Parks in Florida https://etdmpub.florida-etat.org/metadata/gc_mobilehomes.htm
- Migrant Camps in Florida <https://etdmpub.florida-etat.org/metadata/migrant.htm>
- Veteran Organizations and Facilities https://etdmpub.florida-etat.org/metadata/gc_veterans.htm
- Generalized Land Use - Florida DOT District 1 https://etdmpub.florida-etat.org/metadata/d1_lu_gen.htm
- Census Block Groups in Florida https://etdmpub.florida-etat.org/metadata/e2_cenacs_cci.htm
- 1990 Census Block Groups in Florida https://etdmpub.florida-etat.org/metadata/e2_cenblkgrp_1990_cci.htm
- 2000 Census Block Groups in Florida https://etdmpub.florida-etat.org/metadata/e2_cenblkgrp_2000_cci.htm
- 2010 Census Block Groups in Florida https://etdmpub.florida-etat.org/metadata/e2_cenblkgrp_2010_cci.htm